



# LOOKING GLASS REALTY

BREVARD • ASHEVILLE • CASHIERS

160 Deerlake Road  
Brevard, NC

MAIN LEVEL LIVING SPACE: 2,391 SQ. FT.  
UPPER LEVE LIVING SPACE 464 SQ. FT.

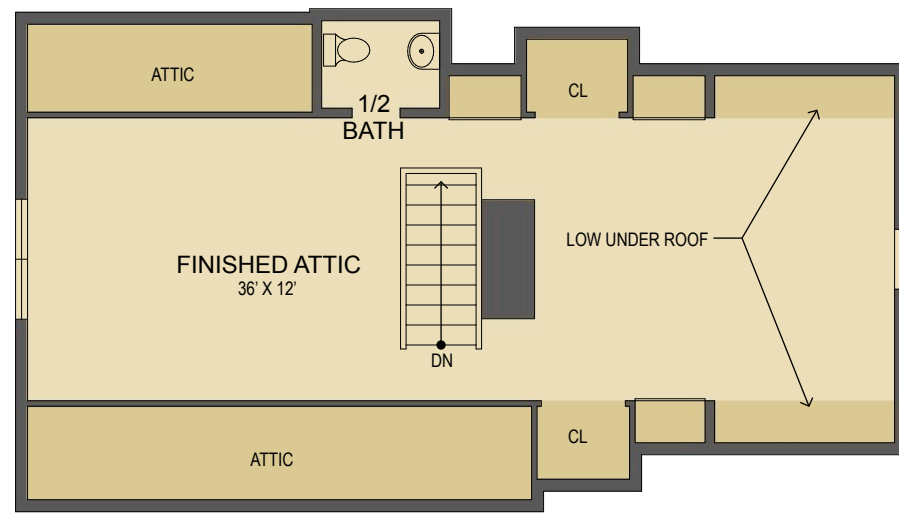
**TOTAL HEATED LIVING SPACE: 2,855 SQ. FT.**

\*BONUS SPACE & ATTIC: 247 SQ. FT.  
DETACHED GARAGE: 705 SQ. FT.  
COVERED BREEZEWAY: 90 SQ. FT.  
TOTAL UNDER ROOF: 3,897 SQ. FT.

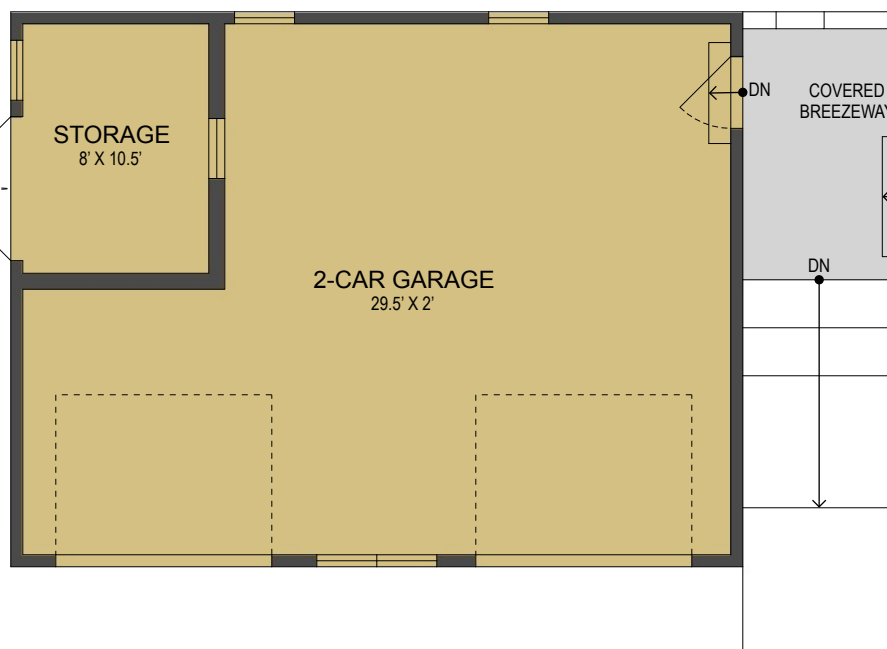
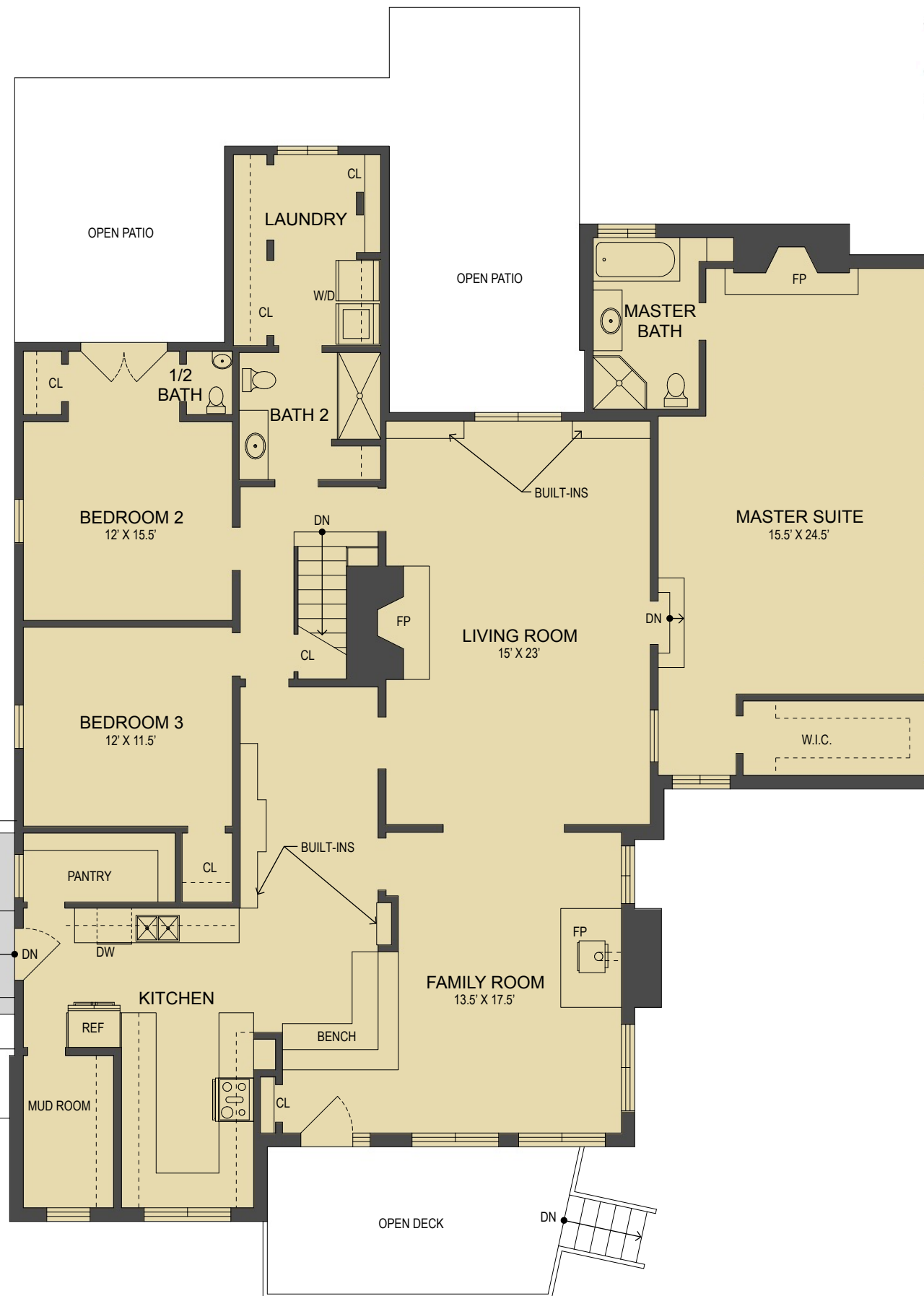
OPEN DECKS: 736 SQ. FT.

- HEATED LIVING SPACE
- UNHEATED/UNFINISHED/\*BONUS SPACE
- COVERED PORCH
- UNCOVERED DECK/PATIO

NOTES:  
 \* - LIVING SPACE REQUIRES A MIN. OF 7'-0" CEILING HIEGHT (5'-0") BELOW A SLOPED CEILING, FINISHED SURFACES, HEATED SPACE, & DIRECT CONNECTION WITH OTHER LIVING SPACE. BONUS SPACE SHOWN MEETS SOME BUT NOT ALL OF THESE QUALIFICATIONS  
 1. MEASUREMENTS WERE OBTAINED VIA THE NORTH CAROLINA REAL ESTATE COMMISSION GUIDELINES.  
 2. DIMENSIONS ARE ROUNDED TO THE NEAREST 1/2 FOOT AND ARE APPROXIMATE.  
 3. INFORMATION WITHIN THESE DRAWINGS ARE INTENDED SOLEY FOR THE USE OF REALTY MARKETING. NOT FOR CONSTRUCTION.  
 4. FOR MORE INFORMATION REGARDING MEASUREMENTS, MARKETING FLOOR PLANS, OR REMODEL DESIGN & CONSULTING, CONTACT **WES HOGAN** AT: [FeaturedListingsWNC@gmail.com](mailto:FeaturedListingsWNC@gmail.com) OR 828.577.1915



Upper Level Floor Plan



Main Level Floor Plan

