

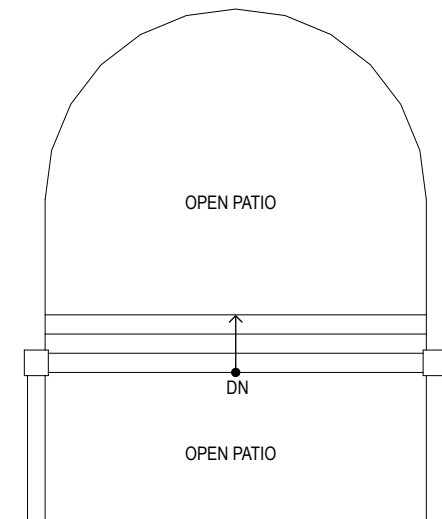
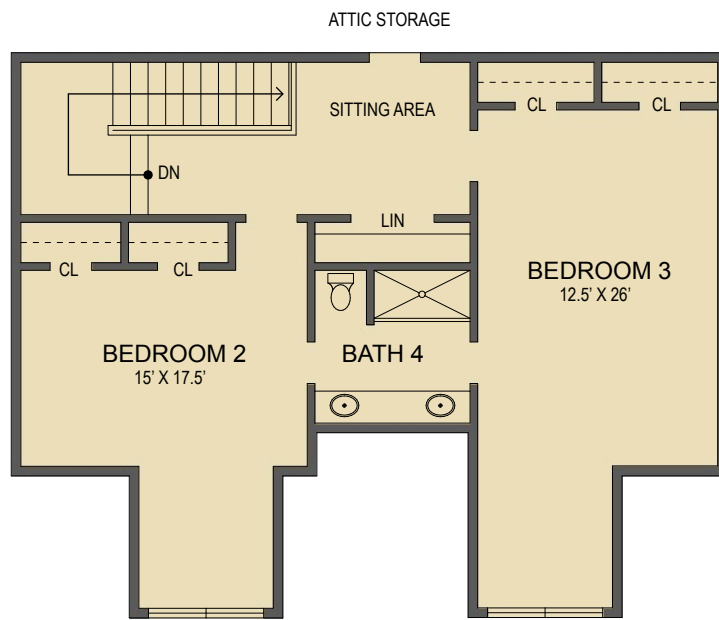


# LOOKING GLASS REALTY

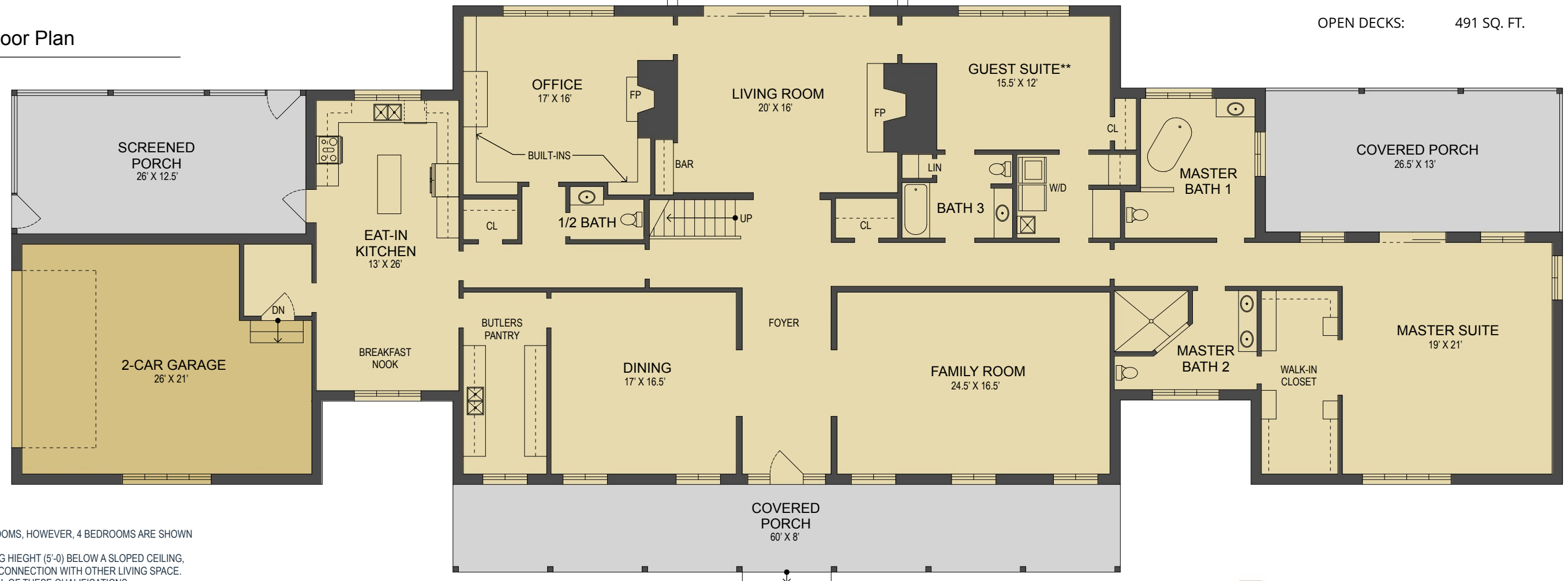
BREVARD • ASHEVILLE • CASHIERS

61 Ashton Lane

UPPER LEVEL LIVING SPACE:	923 SQ. FT.
MAIN LEVEL LIVING SPACE:	4,007 SQ. FT.
<b>TOTAL HEATED LIVING SPACE:</b>	<b>4,930 SQ. FT.</b>
COVERED/SCREENED PORCH:	1,170 SQ. FT.
GARAGE:	569 SQ. FT.
<b>TOTAL UNDER ROOF:</b>	<b>6,669 SQ. FT.</b>
OPEN DECKS:	491 SQ. FT.



Upper Level Floor Plan



Main Level Floor Plan

NOTES:  
 \*\* - SEPTIC PERMIT ON FILE ALLOWS OR 3 BEDROOMS, HOWEVER, 4 BEDROOMS ARE SHOWN ON THE FLOOR PLAN.  
 \* - LIVING SPACE REQUIRES A MIN. OF 7'-0" CEILING HEIGHT (5'-0" BELOW A SLOPED CEILING, FINISHED SURFACES, HEATED SPACE, & DIRECT CONNECTION WITH OTHER LIVING SPACE. BONUS SPACE SHOWN MEETS SOME BUT NOT ALL OF THESE QUALIFICATIONS  
 1. MEASUREMENTS WERE OBTAINED VIA THE NORTH CAROLINA REAL ESTATE COMMISSION GUIDELINES.  
 2. DIMENSIONS ARE ROUNDED TO THE NEAREST 1/2 FOOT AND ARE APPROXIMATE.  
 3. INFORMATION WITHIN THESE DRAWINGS ARE INTENDED SOLELY FOR THE USE OF REALTY MARKETING. NOT FOR CONSTRUCTION.  
 4. FOR MORE INFORMATION REGARDING MEASUREMENTS, MARKETING FLOOR PLANS, OR REMODEL DESIGN & CONSULTING, CONTACT **WES HOGAN** AT:  
**FeaturedListingsWNC@gmail.com** OR  
**828.577.1915**

- HEATED LIVING SPACE
- UNHEATED/UNFINISHED/\*BONUS SPACE
- COVERED PORCH
- UNCOVERED DECK/PATIO