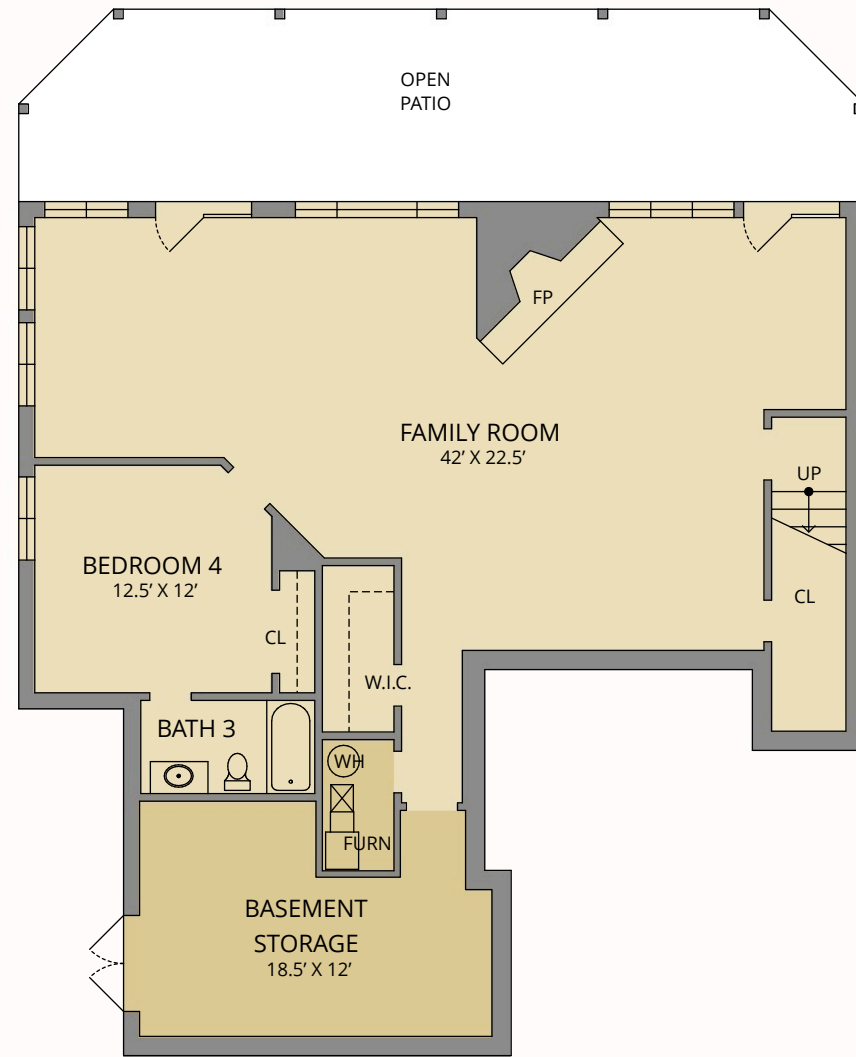
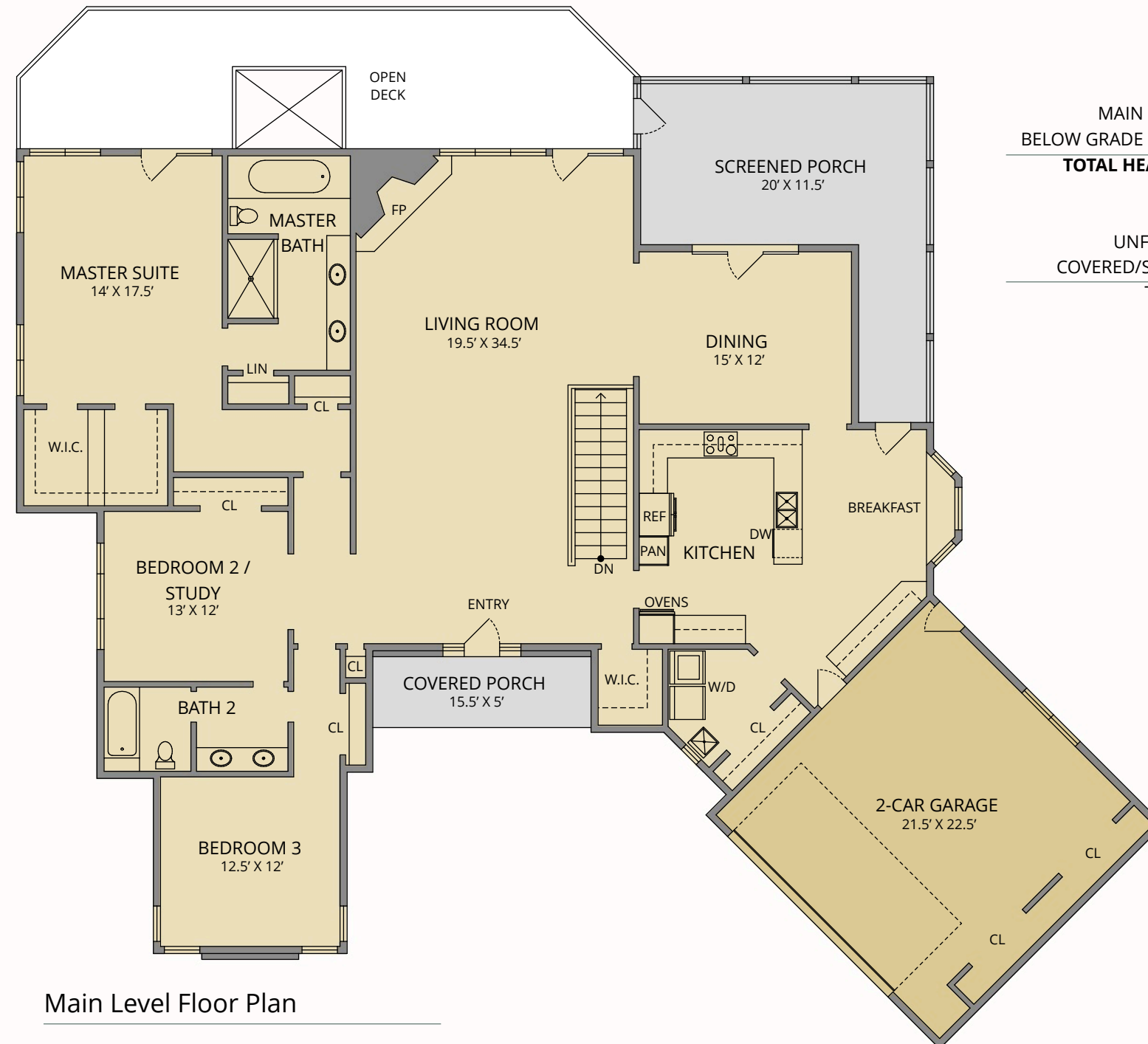




LOOKING GLASS REALTY
BREVARD • ASHEVILLE • CASHIERS



- HEATED LIVING SPACE
- UNHEATED/UNHEATED/*BONUS SPACE
- COVERED PORCH
- UNCOVERED DECK/PATIO



210 Walnut Hills Dr

MAIN LEVEL LIVING SPACE:	2,498 SQ. FT.
BELOW GRADE LEVEL LIVING SPACE:	1,198 SQ. FT.
TOTAL HEATED LIVING SPACE:	3,696 SQ. FT.
GARAGE:	511 SQ. FT.
UNFINISHED BASEMENT:	388 SQ. FT.
COVERED/SCREENED PORCHES:	251 SQ. FT.
TOTAL UNDER ROOF:	4,846 SQ. FT.
OPEN DECKS:	792 SQ. FT.

Below Grade Level Floor Plan

Main Level Floor Plan

NOTES:

- * - LIVING SPACE REQUIRES A MIN. OF 5'-0" HIEGHT BELOW A SLOPED CEILING. BONUS SPACE UNDER THE STAIRS IS FINISHED, HEATED, BUT LOWER THAN THE MINIMUM CEILING HEIGHT.
- 1. MEASUREMENTS WERE OBTAINED VIA THE NORTH CAROLINA REAL ESTATE COMMISSION GUIDELINES.
- 2. DIMENSIONS ARE ROUNDED TO THE NEAREST 1/2 FOOT AND ARE APPROXIMATE.
- 3. INFORMATION WITHIN THESE DRAWINGS ARE INTENDED SOLEY FOR THE USE OF STEVE OWEN & ASSOCIATES REALTY. NOT FOR CONSTRUCTION.
- 4. FOR MORE INFORMATION REGARDING MEASUREMENTS, MARKETING FLOOR PLANS, OR REMODEL DESIGN & CONSULTING, CONTACT WES HOGAN AT: FeaturedListingsWNC@gmail.com OR 828.577.1915

