

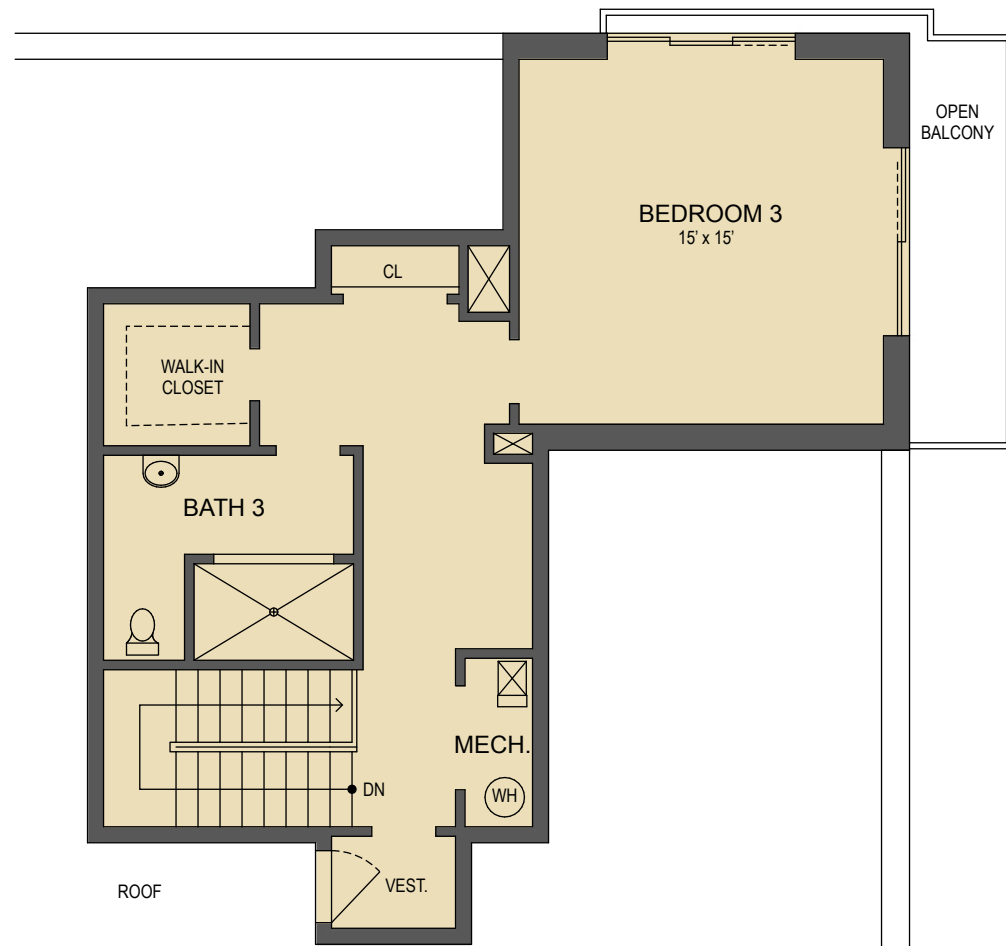


LOOKING GLASS REALTY
BREVARD • ASHEVILLE • CASHIERS

26 W French Broad Place #402

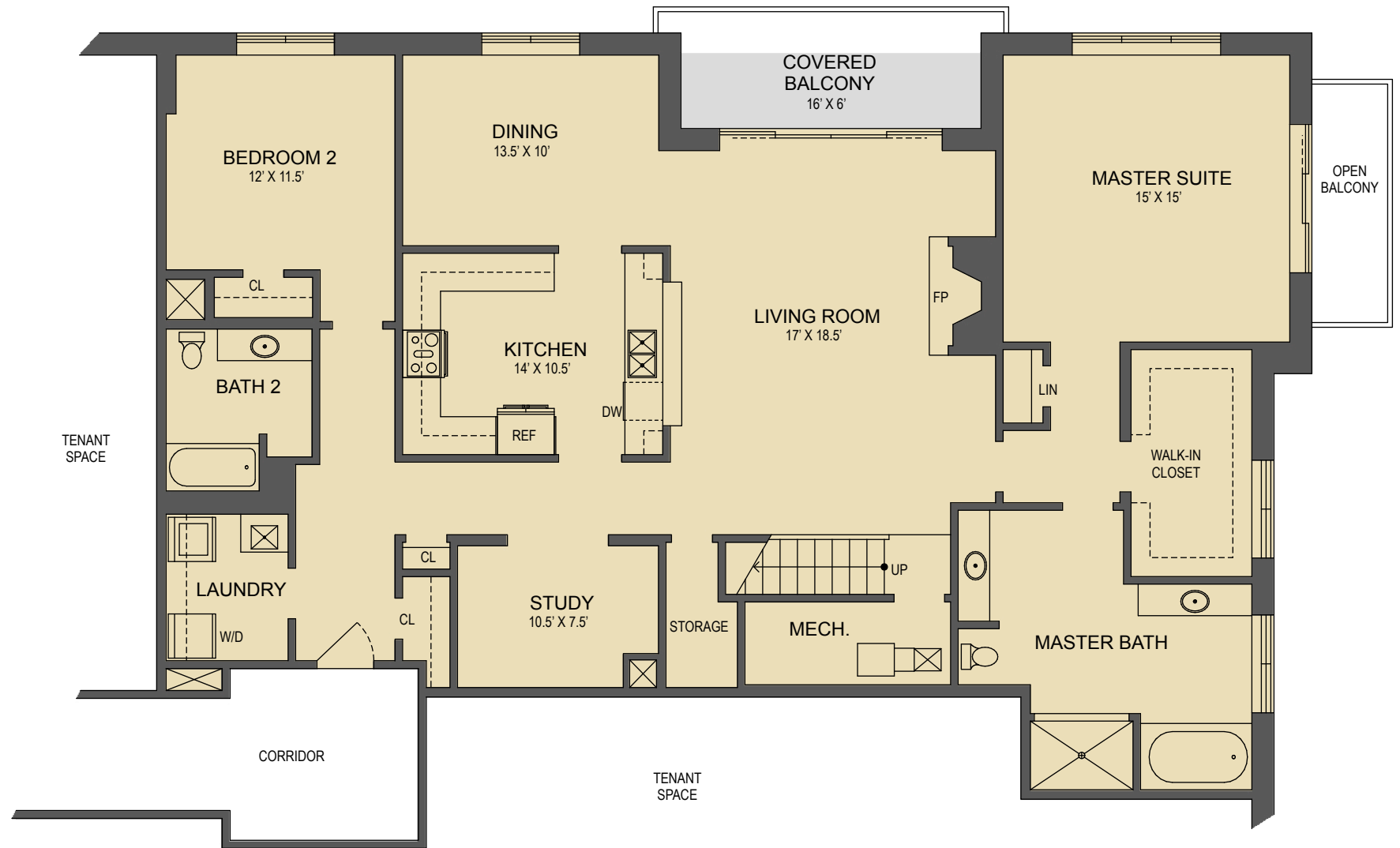
MAIN LEVEL LIVING SPACE: 1,891 SQ. FT.
UPPER LEVEL LIVING SPACE: 658 SQ. FT.
TOTAL HEATED LIVING SPACE: 2,549 SQ. FT.

COVERED PORCH: 63 SQ. FT.
OPEN BALCONY: 186 SQ. FT.
TOTAL: 2,798 SQ. FT.



Upper Level Floor Plan

- HEATED LIVING SPACE
- UNHEATED/UNFINISHED/*BONUS SPACE
- COVERED PORCH
- UNCOVERED DECK/PATIO



Main Level Floor Plan

NOTES:
 * - LIVING SPACE REQUIRES A MIN. OF 7'-0" CEILING HEIGHT (5'-0" BELOW A SLOPED CEILING), FINISHED SURFACES, HEATED SPACE, & DIRECT CONNECTION WITH OTHER LIVING SPACE. BONUS SPACE SHOWN MEETS SOME BUT NOT ALL OF THESE QUALIFICATIONS
 1. MEASUREMENTS WERE OBTAINED VIA THE NORTH CAROLINA REAL ESTATE COMMISSION GUIDELINES.
 2. DIMENSIONS ARE ROUNDED TO THE NEAREST 1/2 FOOT AND ARE APPROXIMATE.
 3. INFORMATION WITHIN THESE DRAWINGS ARE INTENDED SOLELY FOR THE USE OF REALTY MARKETING. NOT FOR CONSTRUCTION.
 4. FOR MORE INFORMATION REGARDING MEASUREMENTS, MARKETING FLOOR PLANS, OR REMODEL DESIGN & CONSULTING, CONTACT WES HOGAN AT:
FeaturedListingsWNC@gmail.com OR
828.577.1915