



LOOKING GLASS REALTY
 BREVARD • ASHEVILLE • CASHIERS

481 Kanagowa Drive
 Brevard, NC

MAIN LEVEL LIVING SPACE:	1,995 SQ. FT.
BELOW GRADE LIVING SPACE:	454 SQ. FT.
TOTAL HEATED LIVING SPACE:	2,449 SQ. FT.

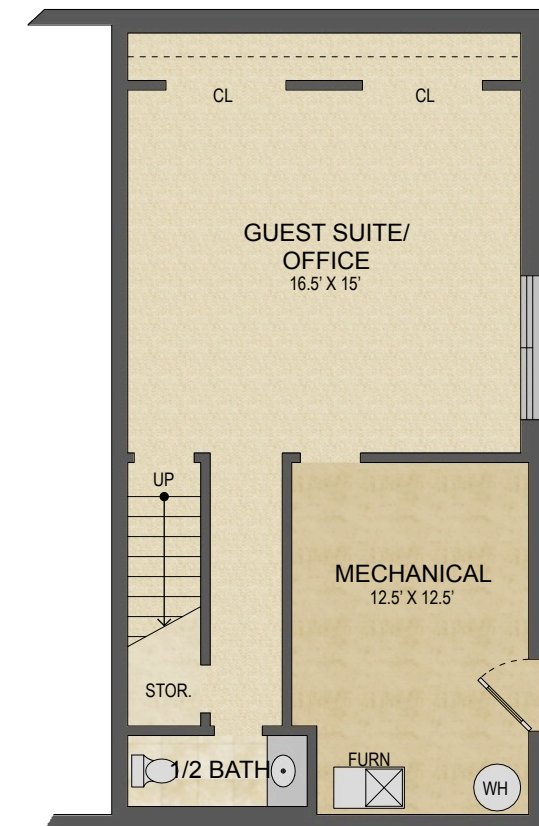
MECHANICAL BASEMENT:	157 SQ. FT.
2-CAR GARAGE:	458 SQ. FT.
COVERED FRONT PORCH:	335 SQ. FT.
SCREENED PORCH:	159 SQ. FT.
TOTAL UNDER ROOF:	3,558 SQ. FT.

OPEN DECKS: 160 SQ. FT.

- HEATED LIVING SPACE
- UNHEATED/UNFINISHED/*BONUS SPACE
- COVERED PORCH
- UNCOVERED DECK/PATIO



Main Level Floor Plan



Lower Level Floor Plan

NOTES:
 *- LIVING SPACE REQUIRES A MIN. OF 7'-0" CEILING HEIGHT (5'-0" BELOW A SLOPED CEILING, FINISHED SURFACES, HEATED SPACE, & DIRECT CONNECTION WITH OTHER LIVING SPACE. BONUS SPACE SHOWN MEETS SOME BUT NOT ALL OF THESE QUALIFICATIONS
 1. MEASUREMENTS WERE OBTAINED VIA THE NORTH CAROLINA REAL ESTATE COMMISSION GUIDELINES.
 2. DIMENSIONS ARE ROUNDED TO THE NEAREST 1/2 FOOT AND ARE APPROXIMATE.
 3. INFORMATION WITHIN THESE DRAWINGS ARE INTENDED SOLEY FOR THE USE OF REALTY MARKETING. NOT FOR CONSTRUCTION.
 4. FOR MORE INFORMATION REGARDING MEASUREMENTS, MARKETING FLOOR PLANS, OR REMODEL DESIGN & CONSULTING, CONTACT **WES HOGAN** AT:
FeaturedListingsWNC@gmail.com OR
828.577.1915

