

LAKE TIAROGA

NCCS GRID

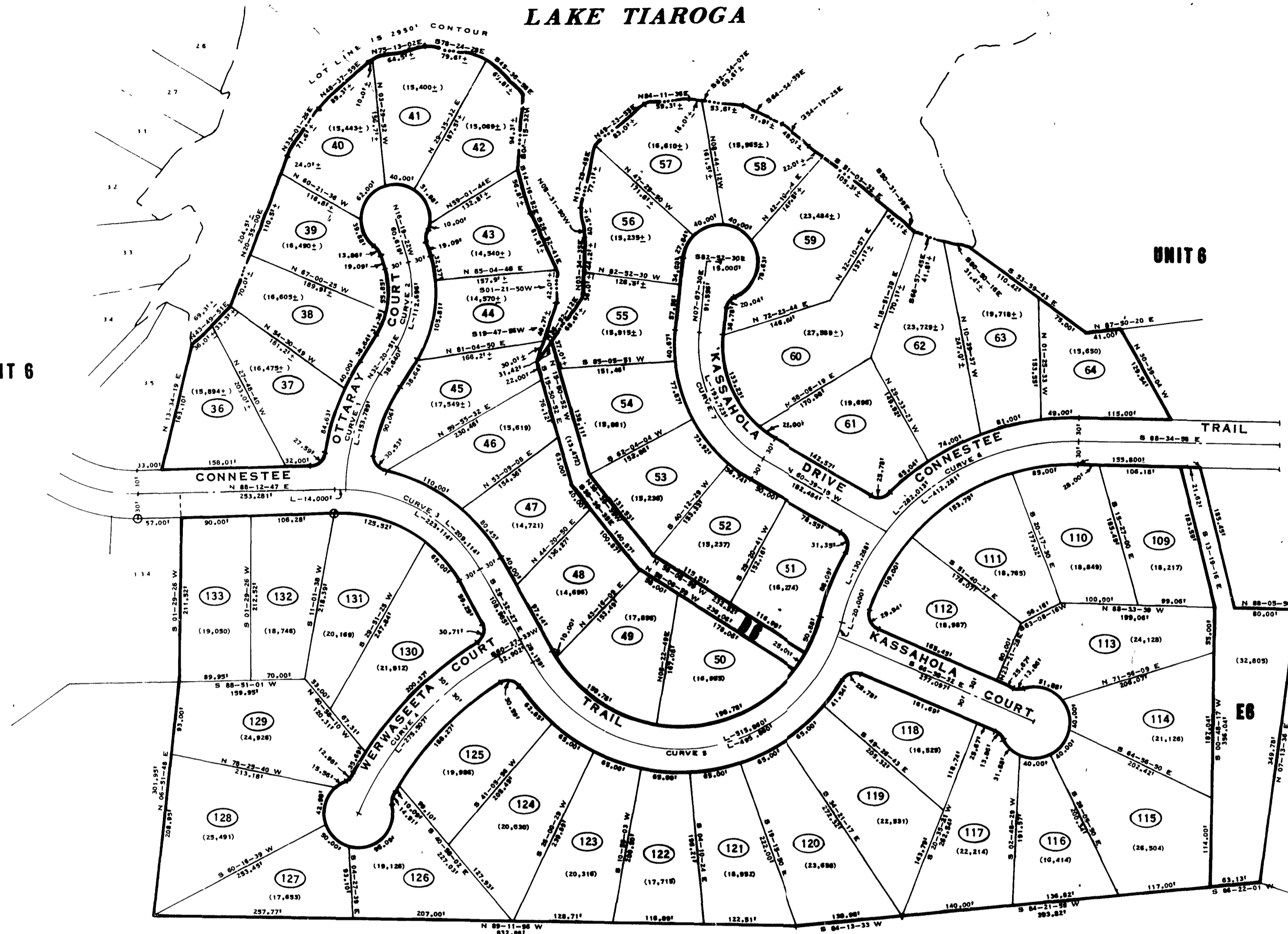


UNIT 6

UNIT 6

470
QB

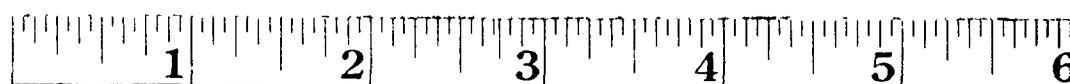
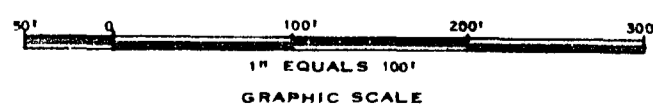
Pls. look 4 page 708



⊕ - INDICATES CONCRETE MONUMENT

PART 3 OF 4

CURVE NO.	CURVE DATA			
	DELTA	RADIUS	LENGTH	CHORD
31	39.47	78.288'	153.789'	151.840'
34	30.14	112.667'	112.696'	109.138'
35	14.46	205.370'	223.114'	212.303'
36	18.11	144.823'	275.907'	270.922'
37	20.16	216.789'	515.860'	402.483'
38	17.45	105.605'	412.281'	181.720'
39	4.49	143.757'	193.713'	182.113'



Connestee Falls

DUNN'S ROCK & EASTATOE TOWNSHIPS
TRANSYLVANIA COUNTY, NORTH CAROLINA
CONNESTEE FALLS DEVELOPMENT CORPORATION

A DIVISION OF REALTEC INCORPORATED
a subsidiary of
Certain-teed
Products Corporation

UNIT 6

LOTS 36 - 64 & 109 - 133

QUIBLE & ASSOCIATES
CONSULTING ENGINEERS & LAND SURVEYORS
CHASE CITY, VIRGINIA

DATE DRAWN - JAN. 13, 1972

SHEET 3 OF 4