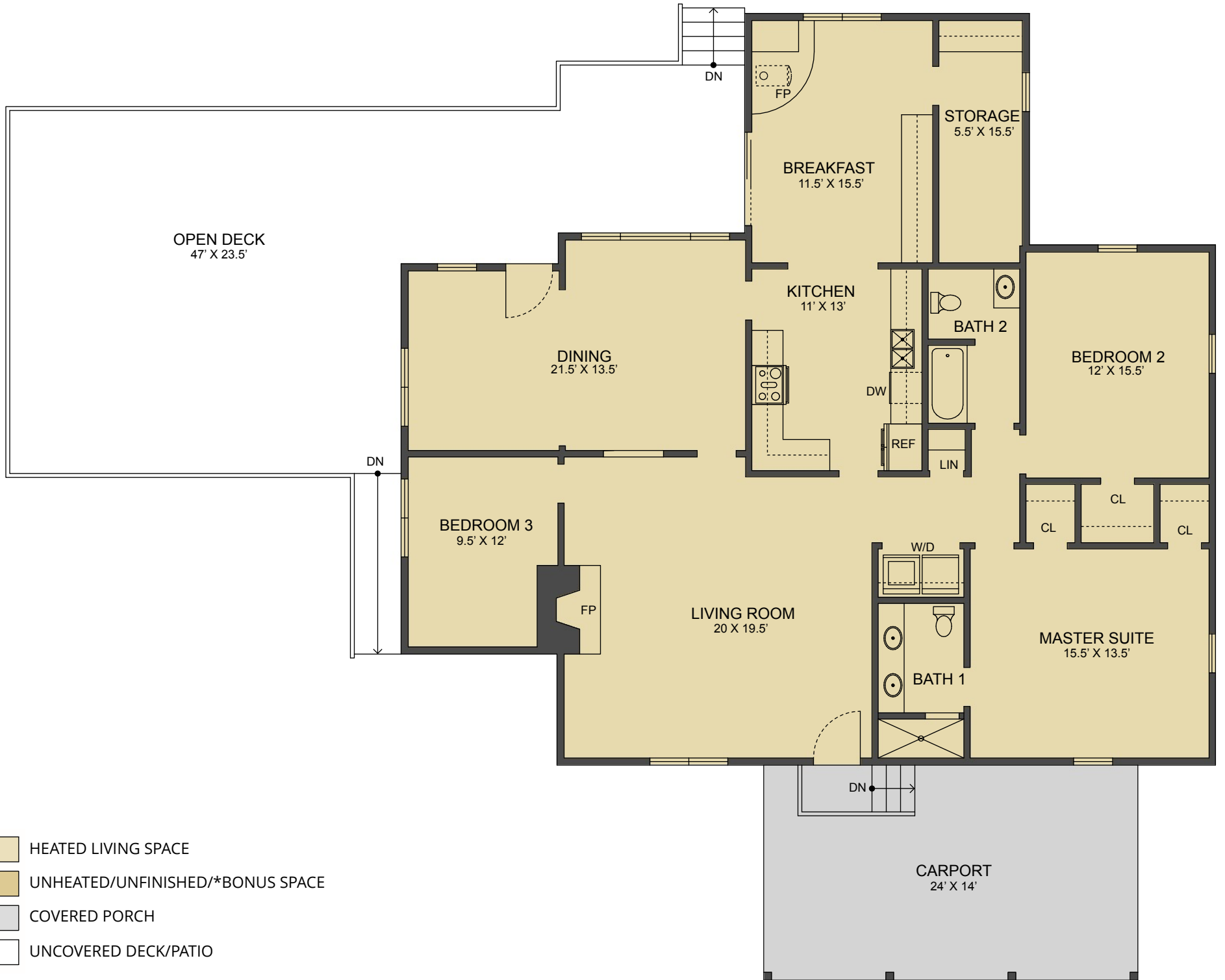


1268 Sequoyah Wood Drive

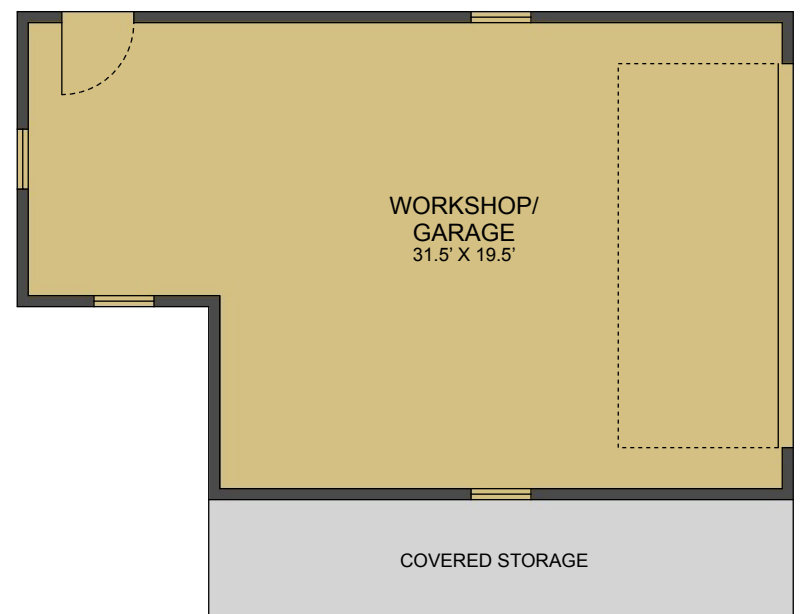
MAIN LEVEL LIVING SPACE:	1,926 SQ. FT.
TOTAL HEATED LIVING SPACE:	1,926 SQ. FT.
GARAGE/WORKSHOP:	593 SQ. FT.
CARPORT:	331 SQ. FT.
COVERED STORAGE:	121 SQ. FT.
<hr/>	
TOTAL UNDER ROOF:	2971 SQ. FT.
OPEN DECKS:	813 SQ. FT.



LOOKING GLASS REALTY
BREVARD • ASHEVILLE • CASHIERS



- HEATED LIVING SPACE
- UNHEATED/UNFINISHED/*BONUS SPACE
- COVERED PORCH
- UNCOVERED DECK/PATIO



NOTES:
 * - LIVING SPACE REQUIRES A MIN. OF 7'-0" CEILING HEIGHT (5'-0" BELOW A SLOPED CEILING), FINISHED SURFACES, HEATED SPACE, & DIRECT CONNECTION WITH OTHER LIVING SPACE. BONUS SPACE SHOWN MEETS SOME BUT NOT ALL OF THESE QUALIFICATIONS
 1. MEASUREMENTS WERE OBTAINED VIA THE NORTH CAROLINA REAL ESTATE COMMISSION GUIDELINES.
 2. DIMENSIONS ARE ROUNDED TO THE NEAREST 1/2 FOOT AND ARE APPROXIMATE.
 3. INFORMATION WITHIN THESE DRAWINGS ARE INTENDED SOLELY FOR THE USE OF REALTY MARKETING. NOT FOR CONSTRUCTION.
 4. FOR MORE INFORMATION REGARDING MEASUREMENTS, MARKETING FLOOR PLANS, OR REMODEL DESIGN & CONSULTING, CONTACT **WES HOGAN** AT: FeaturedListingsWNC@gmail.com OR **828.577.1915**

Main Level Floor Plan