



LOOKING GLASS REALTY

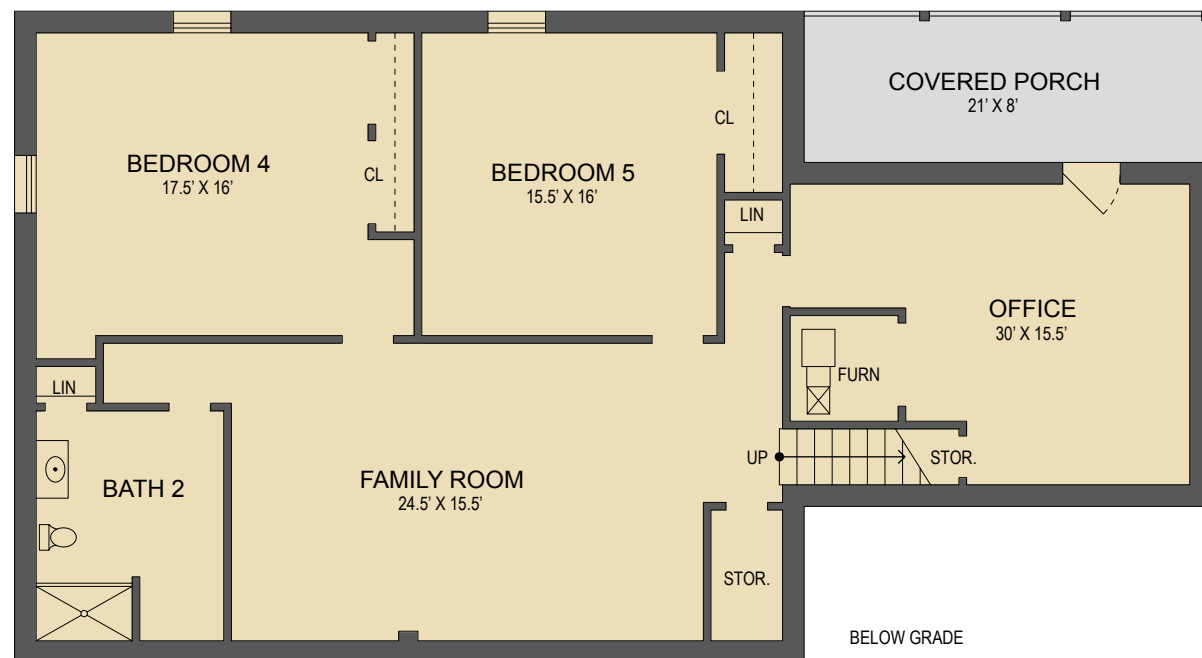
BREVARD • ASHEVILLE • CASHIERS

603 Kanasgowa Drive
Brevard, NC

MAIN LEVEL LIVING SPACE:	1,809 SQ. FT.
BELOW GRADE LIVING SPACE:	1,731 SQ. FT.
TOTAL HEATED LIVING SPACE:	3,540 SQ. FT.
2-CAR GARAGE:	465 SQ. FT.
SCREENED & COVERED PORCHES:	389 SQ. FT.
TOTAL UNDER ROOF:	4,394 SQ. FT.
OPEN DECKS:	217 SQ. FT.



Main Level Floor Plan



Lower Level Floor Plan

- HEATED LIVING SPACE
- UNHEATED/UNFINISHED/*BONUS SPACE
- COVERED PORCH
- UNCOVERED DECK/PATIO

NOTES:
 * - LIVING SPACE REQUIRES A MIN. OF 7'-0" CEILING HEIGHT (5'-0") BELOW A SLOPED CEILING, FINISHED SURFACES, HEATED SPACE, & DIRECT CONNECTION WITH OTHER LIVING SPACE. BONUS SPACE SHOWN MEETS SOME BUT NOT ALL OF THESE QUALIFICATIONS
 1. MEASUREMENTS WERE OBTAINED VIA THE NORTH CAROLINA REAL ESTATE COMMISSION GUIDELINES.
 2. DIMENSIONS ARE ROUNDED TO THE NEAREST 1/2 FOOT AND ARE APPROXIMATE.
 3. INFORMATION WITHIN THESE DRAWINGS ARE INTENDED SOLELY FOR THE USE OF REALTY MARKETING. NOT FOR CONSTRUCTION.
 4. FOR MORE INFORMATION REGARDING MEASUREMENTS, MARKETING FLOOR PLANS, OR REMODEL DESIGN & CONSULTING, CONTACT WES HOGAN AT:
FeaturedListingsWNC@gmail.com OR
828.577.1915