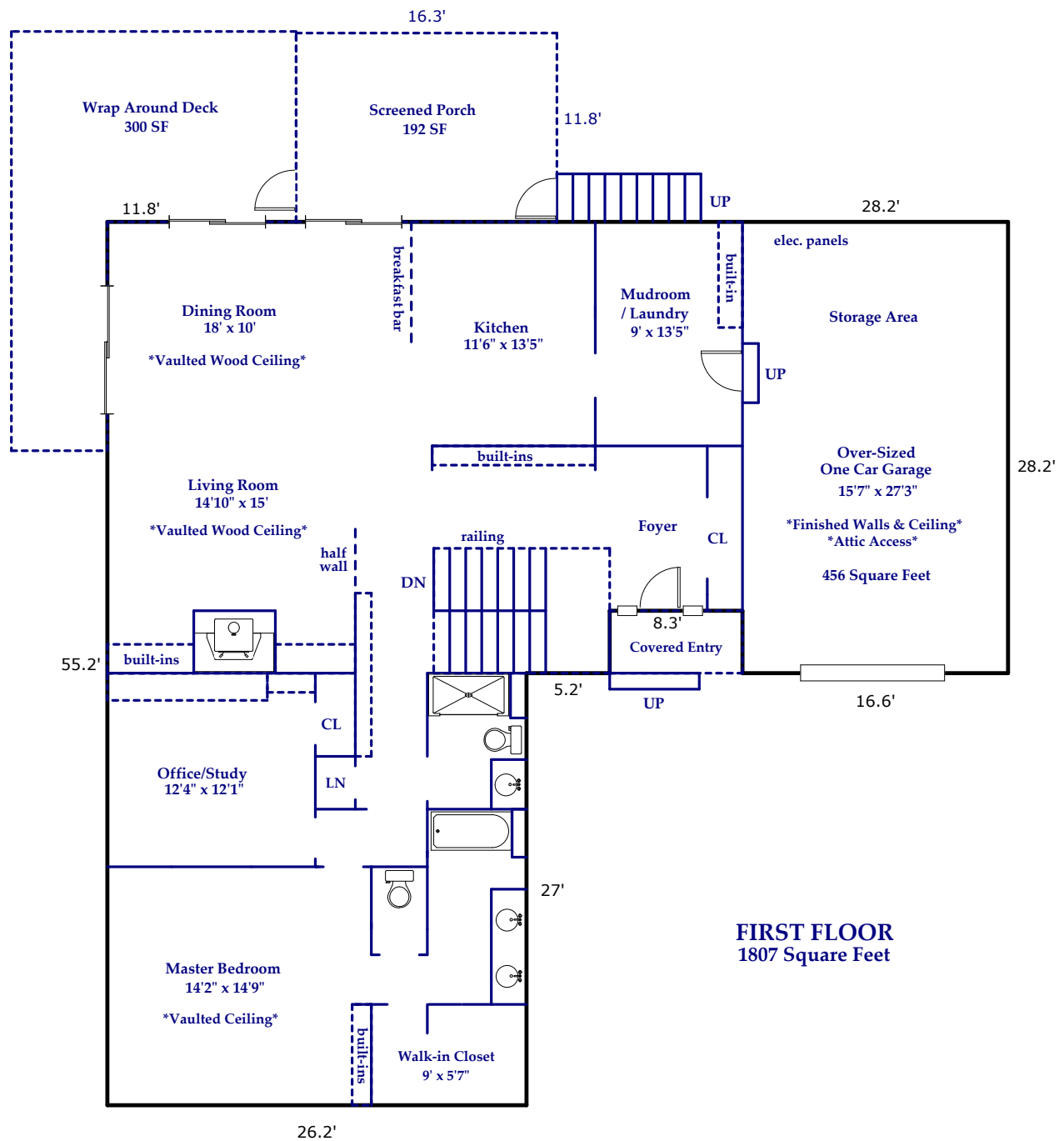


337 Butternut Lane, Brevard

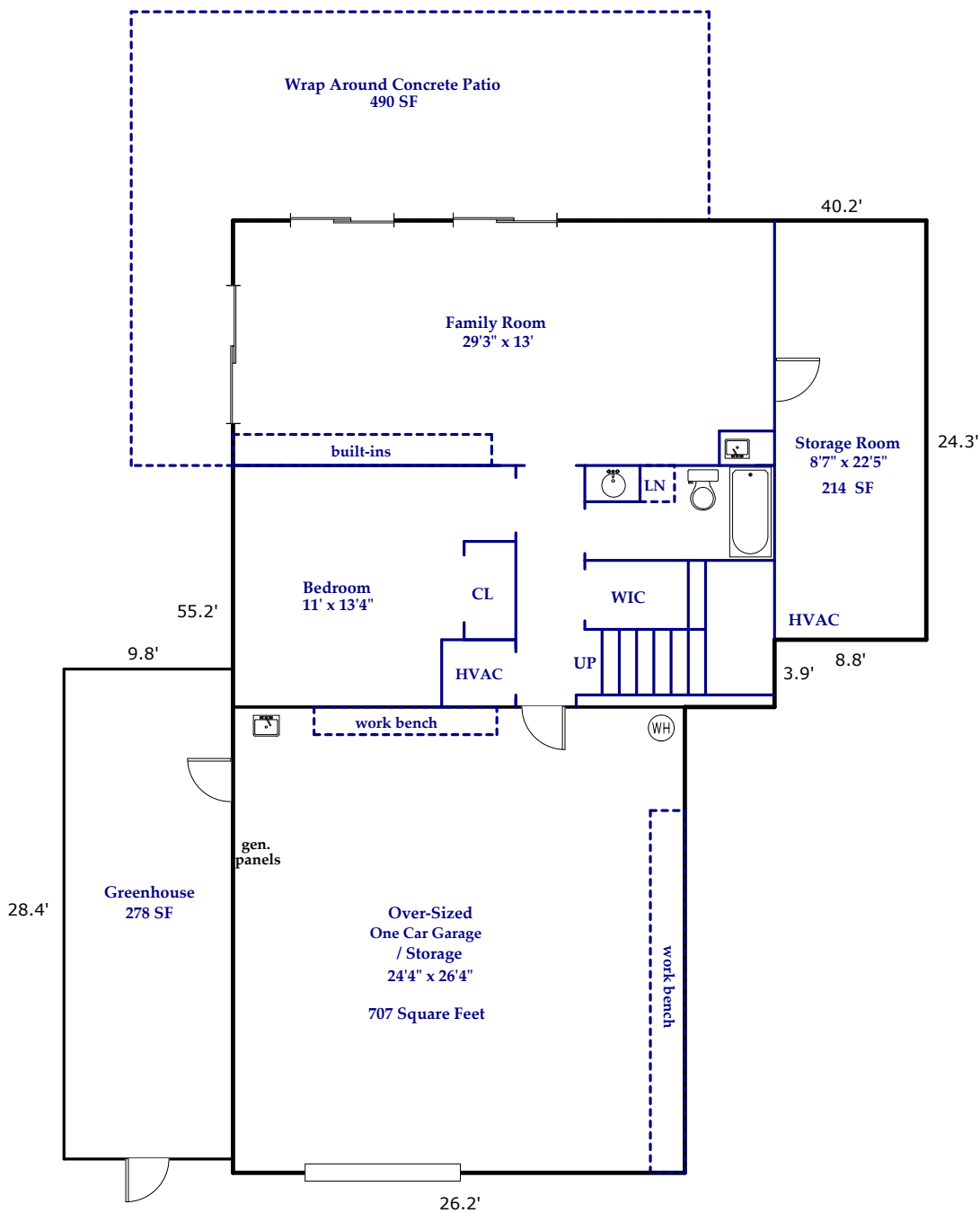
Approximate Total Finished/Heated Living Area:
2693 Square Feet

First Floor: 1807 Square Feet
Below Grade: 886 Square Feet



Prepared by Judy Brouillette-O'Neil: ProPlans of the Carolinas, LLC

All dimensions are rounded to the nearest .01 and are deemed reliable, but not guaranteed.
Square Footage Calculations determined following ANSI Standards and NCREC House Measuring Square Footage Guidelines.



BELOW GRADE
1807 Square Feet

Approximate Total Finished/Heated Living Area:
886 Square Feet

Unfinished Areas: 921 Square Feet

Total Square Footage Under Roof for All Finished/Unfinished & Heated/Unheated Areas:
4540 Square Feet