



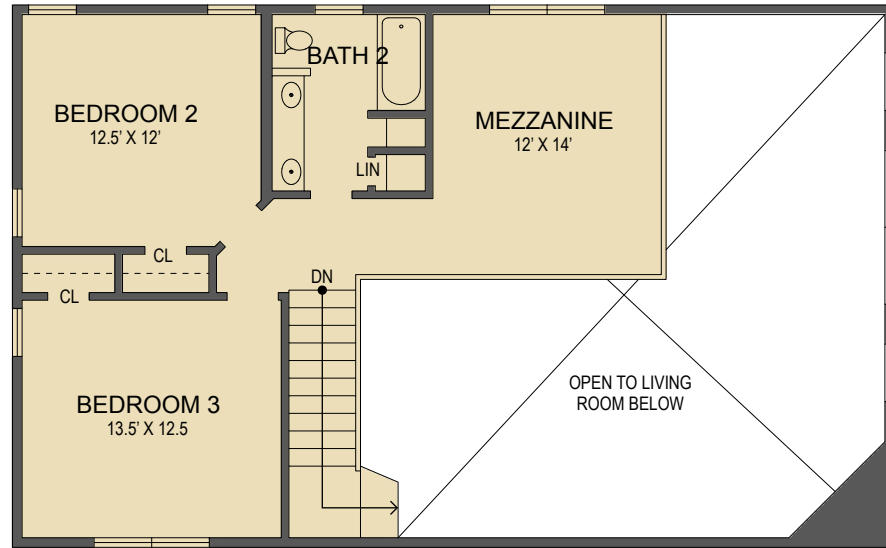
LOOKING GLASS REALTY
BREVARD • ASHEVILLE • CASHIERS

363 Kelly Mountain Road
Brevard, NC

UPPER LEVEL LIVING SPACE:	743 SQ. FT.
MAIN LEVEL LIVING SPACE:	1,495 SQ. FT.
BELOW GRADE LIVING SPACE:	623 SQ. FT.
TOTAL HEATED LIVING SPACE:	2,861 SQ. FT.

2- CAR GARAGE:	690 SQ. FT.
COVERED PORCHES/PATIOS:	694 SQ. FT.
TOTAL UNDER ROOF:	4,245 SQ. FT.

OPEN DECKS: 661 SQ. FT.

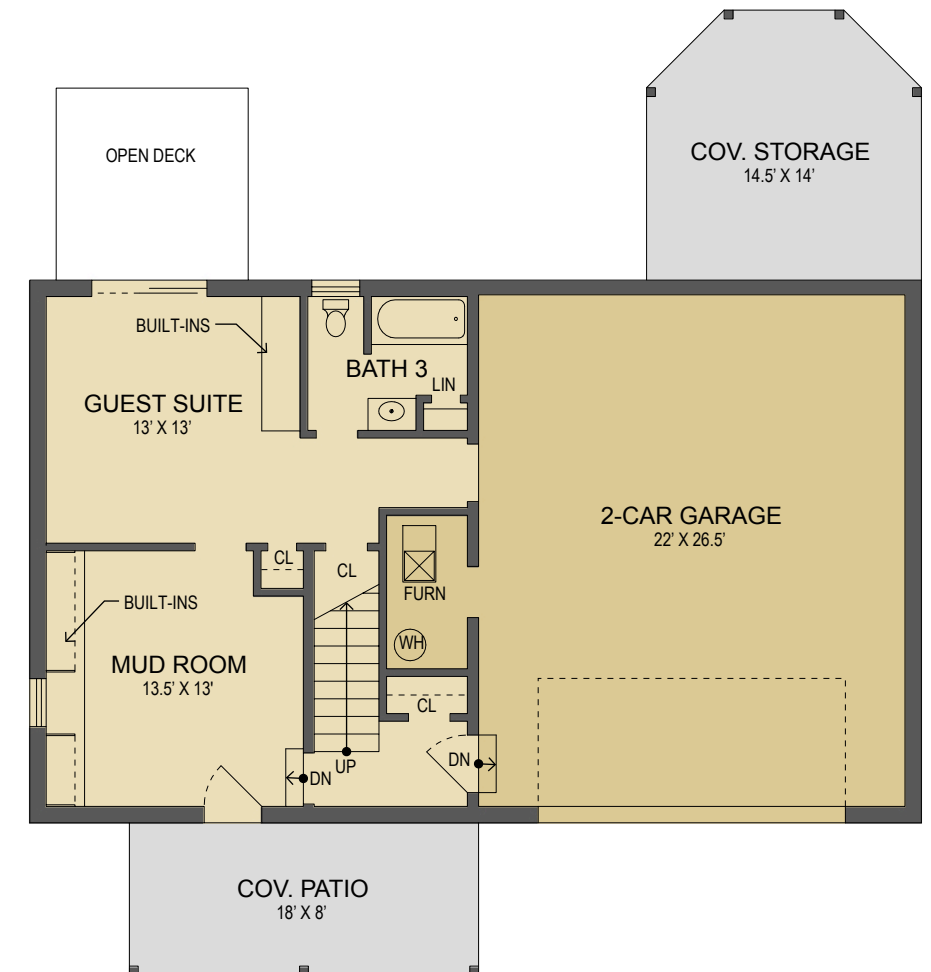


Lower Level Floor Plan



Main Level Floor Plan

- HEATED LIVING SPACE
- UNHEATED/UNFINISHED/*BONUS SPACE
- COVERED PORCH
- UNCOVERED DECK/PATIO



Upper Level Floor Plan

NOTES:
 * - LIVING SPACE REQUIRES A MIN. OF 7'-0" CEILING HEIGHT (5'-0") BELOW A SLOPED CEILING, FINISHED SURFACES, HEATED SPACE, & DIRECT CONNECTION WITH OTHER LIVING SPACE. BONUS SPACE SHOWN MEETS SOME BUT NOT ALL OF THESE QUALIFICATIONS
 1. MEASUREMENTS WERE OBTAINED VIA THE NORTH CAROLINA REAL ESTATE COMMISSION GUIDELINES.
 2. DIMENSIONS ARE ROUNDED TO THE NEAREST 1/2 FOOT AND ARE APPROXIMATE.
 3. INFORMATION WITHIN THESE DRAWINGS ARE INTENDED SOLELY FOR THE USE OF REALTY MARKETING. NOT FOR CONSTRUCTION.
 4. FOR MORE INFORMATION REGARDING MEASUREMENTS, MARKETING FLOOR PLANS, OR REMODEL DESIGN & CONSULTING, CONTACT WES HOGAN AT:
 FeaturedListingsWNC@gmail.com OR 828.577.1915