



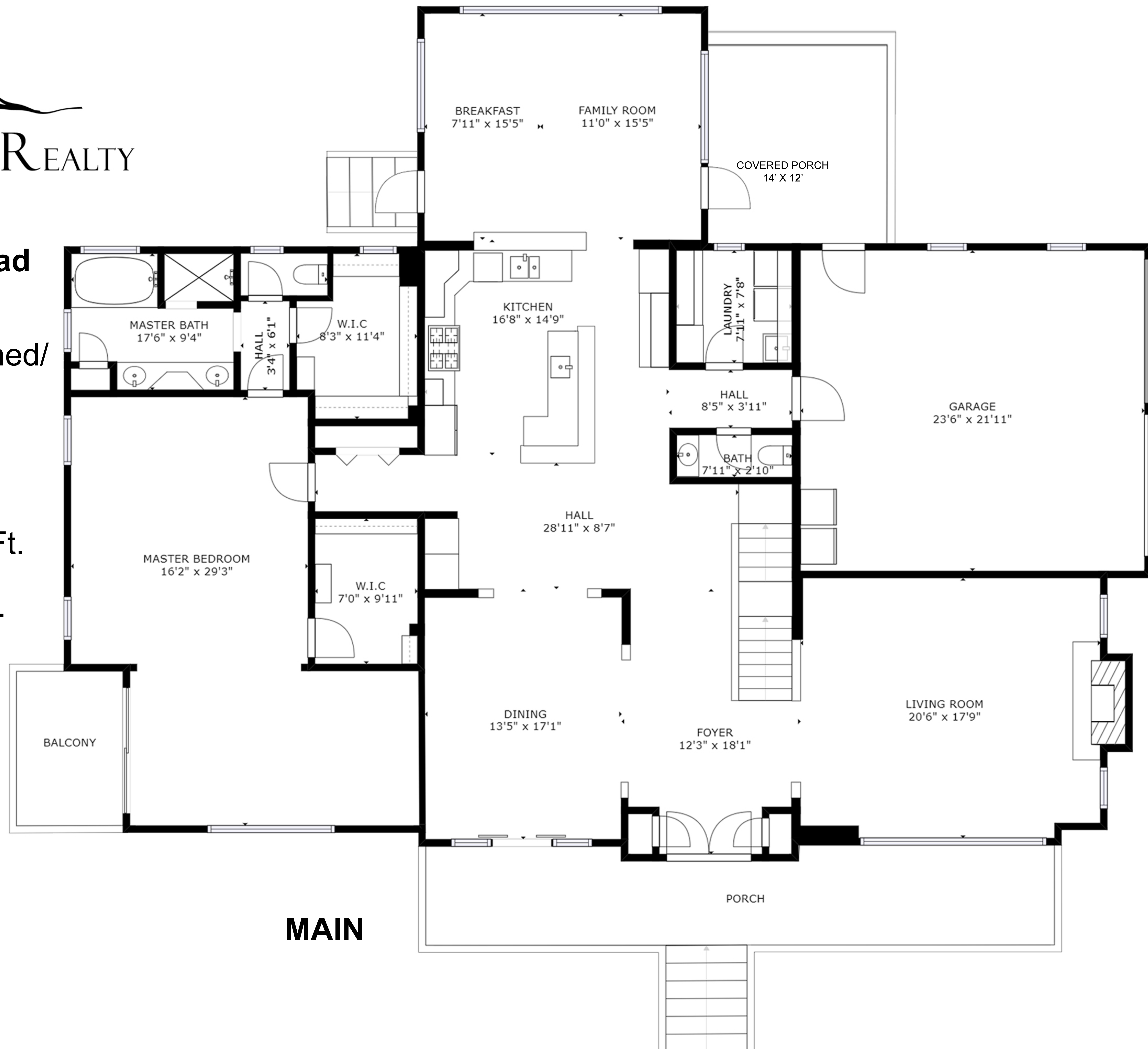
LOOKING GLASS REALTY

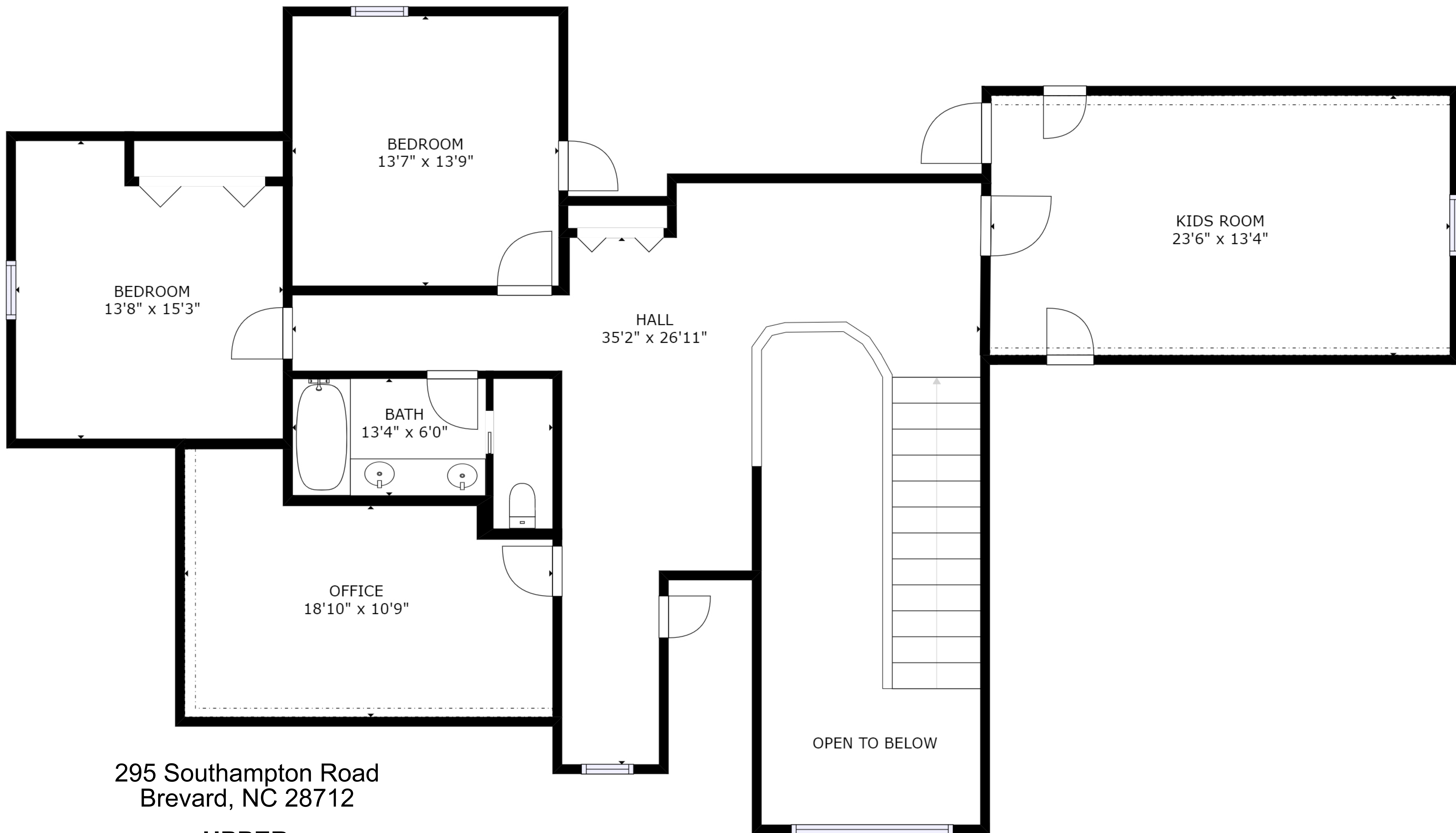
**295 Southampton Road
Brevard, NC 28712**

**Approximate Total Finished/
Heated Living Area:
5,850 Sq. Ft.**

**Main: 2,728 Sq. Ft.
Upper: 1,652 Sq. Ft.
Basement: 1,470 Sq. Ft.**

Garage: 1,241 Sq. Ft.





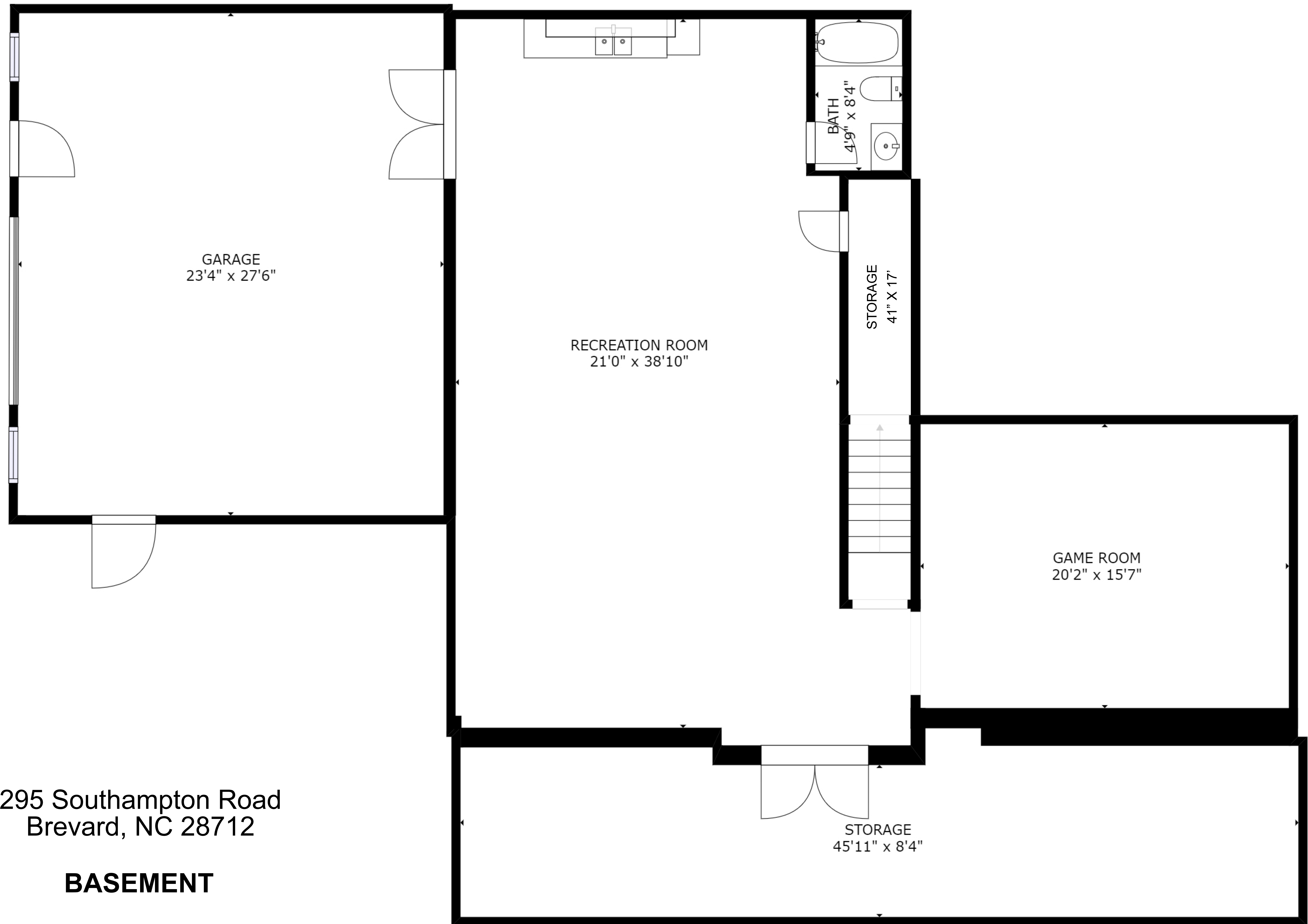
295 Southampton Road
Brevard, NC 28712

UPPER

Approximate Total Finished/Heated Living Area:
5,850 square feet

Main: 2,728 square feet
Upper: 1,652 square feet
Basement: 1,470 square feet

Garage: 1,241 square feet



295 Southampton Road
Brevard, NC 28712

BASEMENT

Approximate Total Finished/Heated Living Area:
5,850 square feet

Main: 2,728 square feet
Upper: 1,652 square feet
Basement: 1,470 square feet

Garage: 1,241 square feet