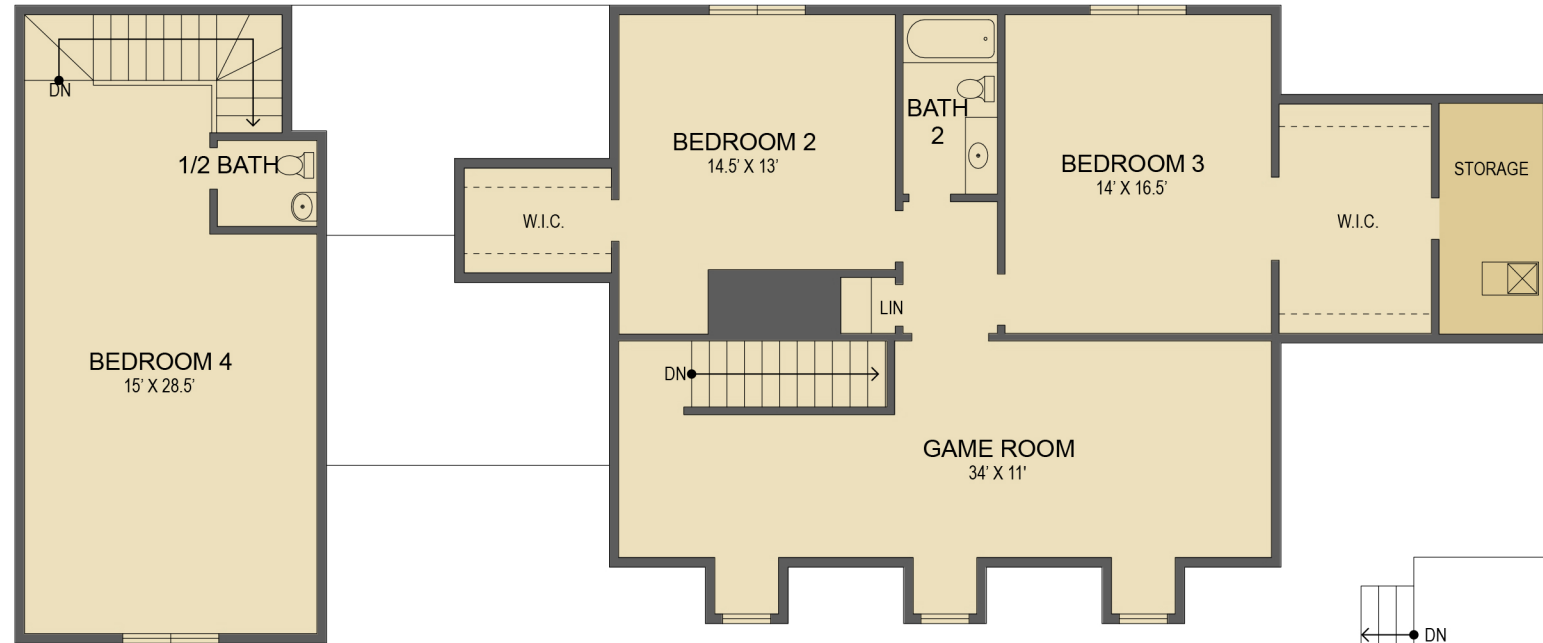




LOOKING GLASS REALTY

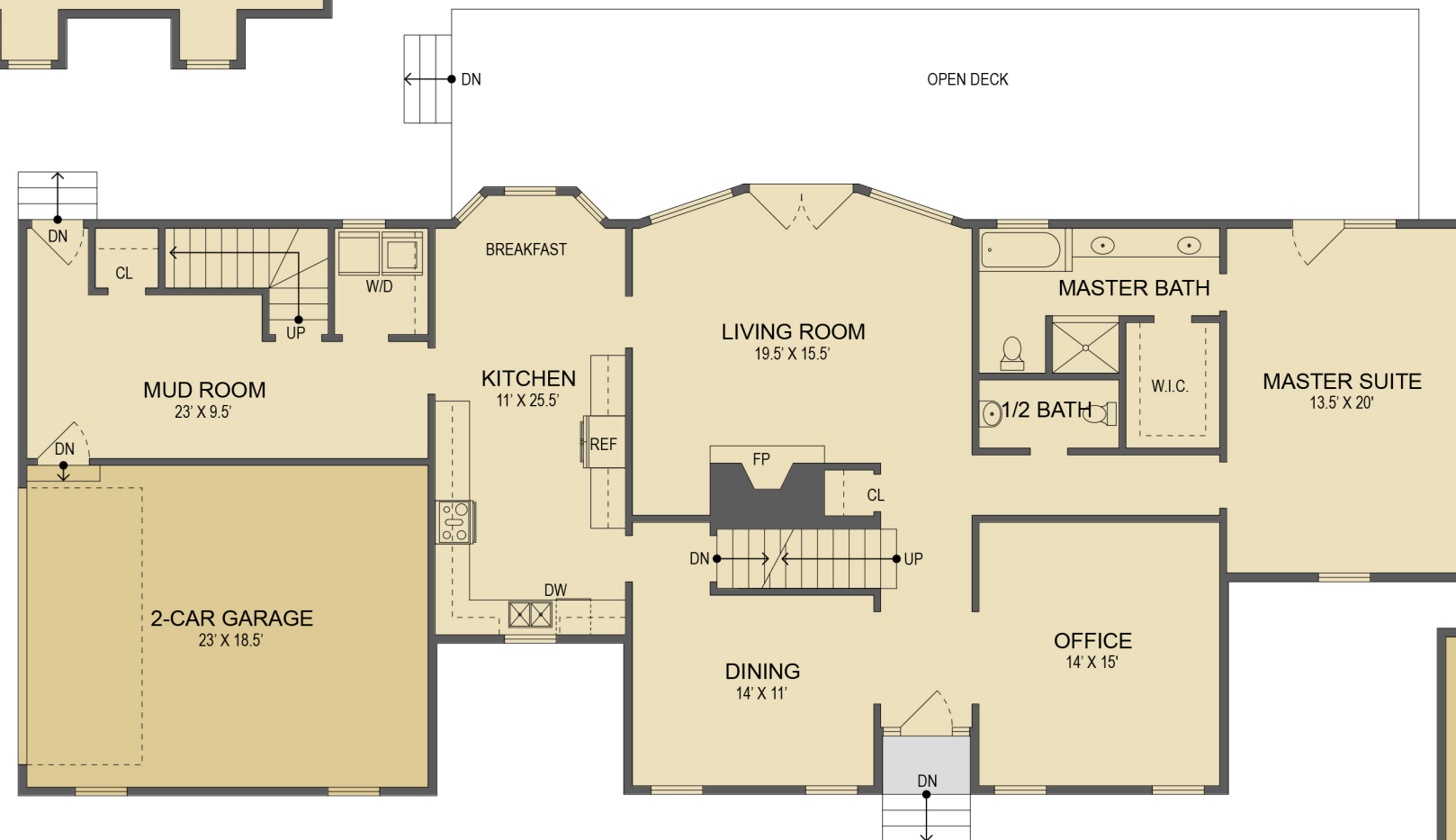


Upper Level Floor Plan

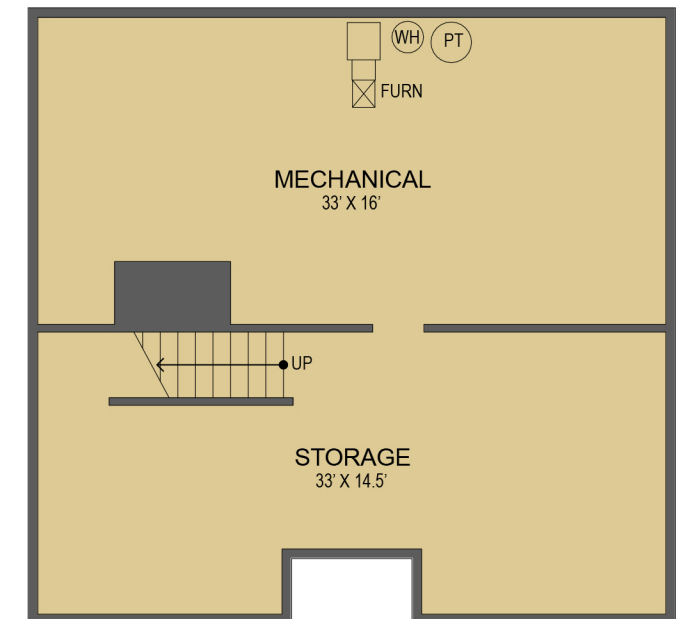
94 Paradise Cove Road
Penrose, NC

MAIN LEVEL LIVING SPACE:	2,093 SQ. FT.
UPPER LEVEL LIVING SPACE:	1,759 SQ. FT.
TOTAL HEATED LIVING SPACE:	3,852 SQ. FT.
ATTIC STORAGE::	76 SQ. FT.
2-CAR GARAGE:	458 SQ. FT.
COVERED FRONT PORCH:	17 SQ. FT.
UNFINISHED BASEMENT:	1,059 SQ. FT.
TOTAL UNDER ROOF:	5,462 SQ. FT.
OPEN DECKS:	641 SQ. FT.

- HEATED LIVING SPACE
- UNHEATED/UNFINISHED/*BONUS SPACE
- COVERED PORCH
- UNCOVERED DECK/PATIO



Main Level Floor Plan



Below Grade Level Floor Plan

NOTES:
 * - LIVING SPACE REQUIRES A MIN. OF 7'-0" CEILING HEIGHT (5'-0" BELOW A SLOPED CEILING, FINISHED SURFACES, HEATED SPACE, & DIRECT CONNECTION WITH OTHER LIVING SPACE. BONUS SPACE SHOWN MEETS SOME BUT NOT ALL OF THESE QUALIFICATIONS
 1. MEASUREMENTS WERE OBTAINED VIA THE NORTH CAROLINA REAL ESTATE COMMISSION GUIDELINES.
 2. DIMENSIONS ARE ROUNDED TO THE NEAREST 1/2 FOOT AND ARE APPROXIMATE.
 3. INFORMATION WITHIN THESE DRAWINGS ARE INTENDED SOLEY FOR THE USE OF REALTY MARKETING. NOT FOR CONSTRUCTION.
 4. FOR MORE INFORMATION REGARDING MEASUREMENTS, MARKETING FLOOR PLANS, OR REMODEL DESIGN & CONSULTING, CONTACT **WES HOGAN** AT:
FeaturedListingsWNC@gmail.com OR
828.577.1915