

CONNESTEE FALLS UNIT 2

452

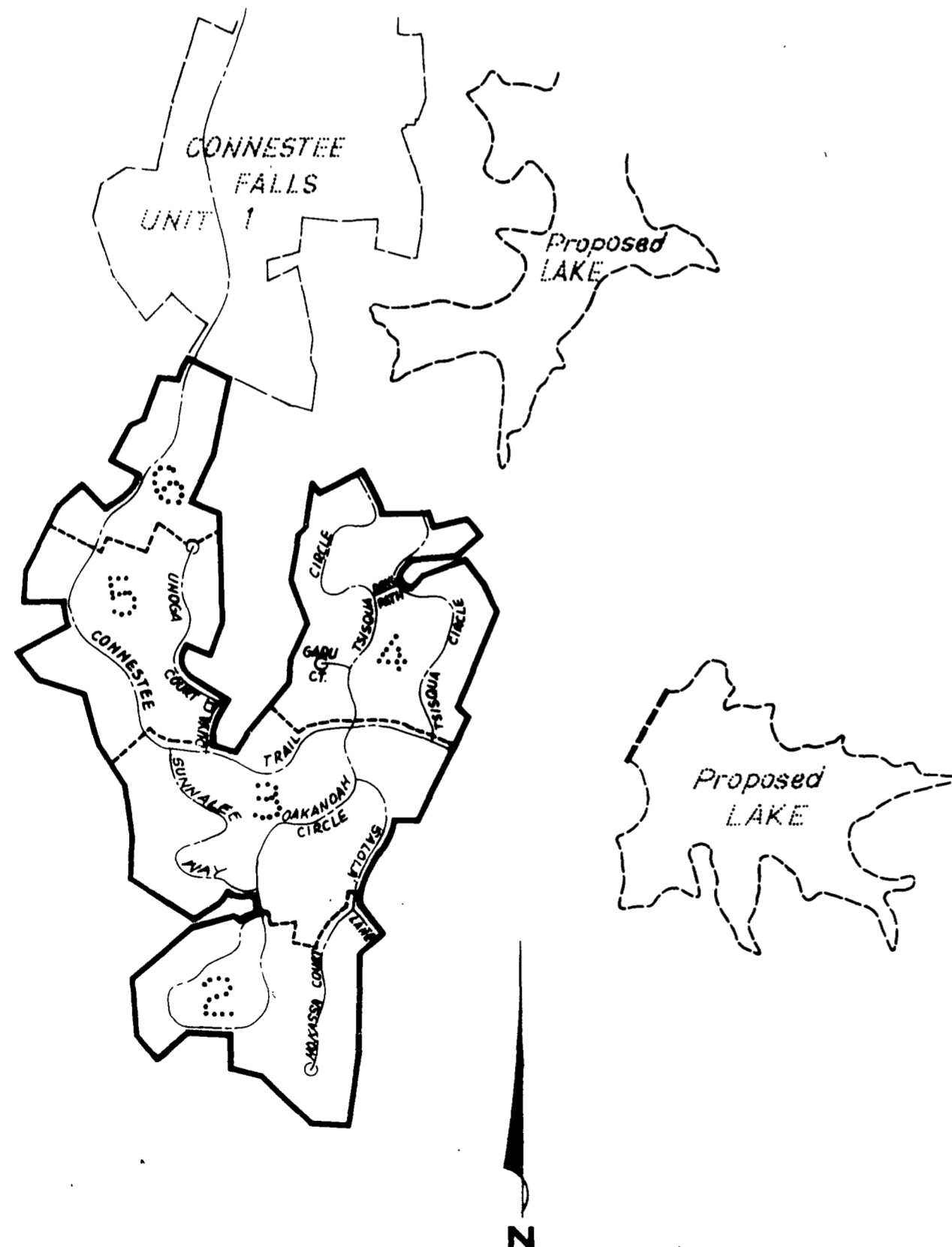
A DEVELOPMENT OF CONNESTEE FALLS DEVELOPMENT CORP.

LOCATION: DUNNS ROCK & EASTATOE TOWNSHIPS,
TRANSYLVANIA COUNTY, N.C.

OWNER: CONNESTEE FALLS DEVELOPMENT CORP.

ENGINEER: HARRY M. RHINELANDER, P.E. NO. 5408
BREVARD, N.C.

SURVEY DATE: JUNE-JULY, 1971 • SHEET 1 OF 7 SHEETS



NOTES:

1. Connestee Falls Development Corporation reserves rights of way and easements for water, gas, sewer, and drainage pipes and for poles and overhead and underground wires and conduits for electric and telephone services, together with any and all appurtenances appertaining thereto, on, over, and across each of the lots shown hereon, said easements to be strips of land 5 feet in width contiguous to the side and rear lines of each lot.

Connestee Falls Development Corporation further reserves the right to subsequently grant rights of way and easements over the above described strips for the above stated purposes to any public agencies or utility firms or to grant its rights in such easements and rights of way to a group composed of subsequent owners of the lots shown hereon.

- 2. All bearings are based on the North Carolina Coordinate System.
- 3. All areas shown have been determined by the double meridian distance method.

LEGEND:

- ⊙ denotes a concrete control monument.
- denotes an iron rod.
- denotes a point.
- denotes the centerline of a natural water course.

I, Mary Jane McBray, a notary public in and for Transylvania County, North Carolina, do hereby certify that Harry M. Rhinelande personally appeared before me this day, and being duly sworn, acknowledges that the foregoing certificate was executed by him.

Witness my hand and seal this 19 day of July, A.D., 1971.

Mary Jane McBray
Notary Public
My Commission expires: 3-23-1975

STATE OF NORTH CAROLINA)
COUNTY OF TRANSYLVANIA)

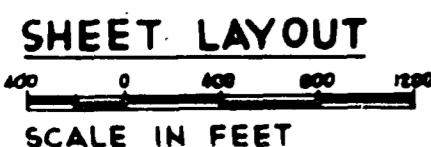
The foregoing certificates of Harry M. Rhinelande, Registered Engineer and Mary Jane McBray, Notary Public, are certified to be correct. This instrument was presented for registration and recorded in this office in Plat Book 4, Page 52, this 18 day of July, at 4:30 o'clock P..m., 1971.

Fred H. Leland
Registrar of Deeds
(By Ueli Leland and deputy)

I, Harry M. Rhinelande, certify that this map was drawn under my supervision from an actual survey made under my supervision during the months of June and July, 1971; that the error of closure as calculated by latitudes and departures is less than 1:5000; and that this map was prepared in accordance with G. S. 47-30 as amended.

Witness my hand and seal this 19 day of July, A.D., 1971.

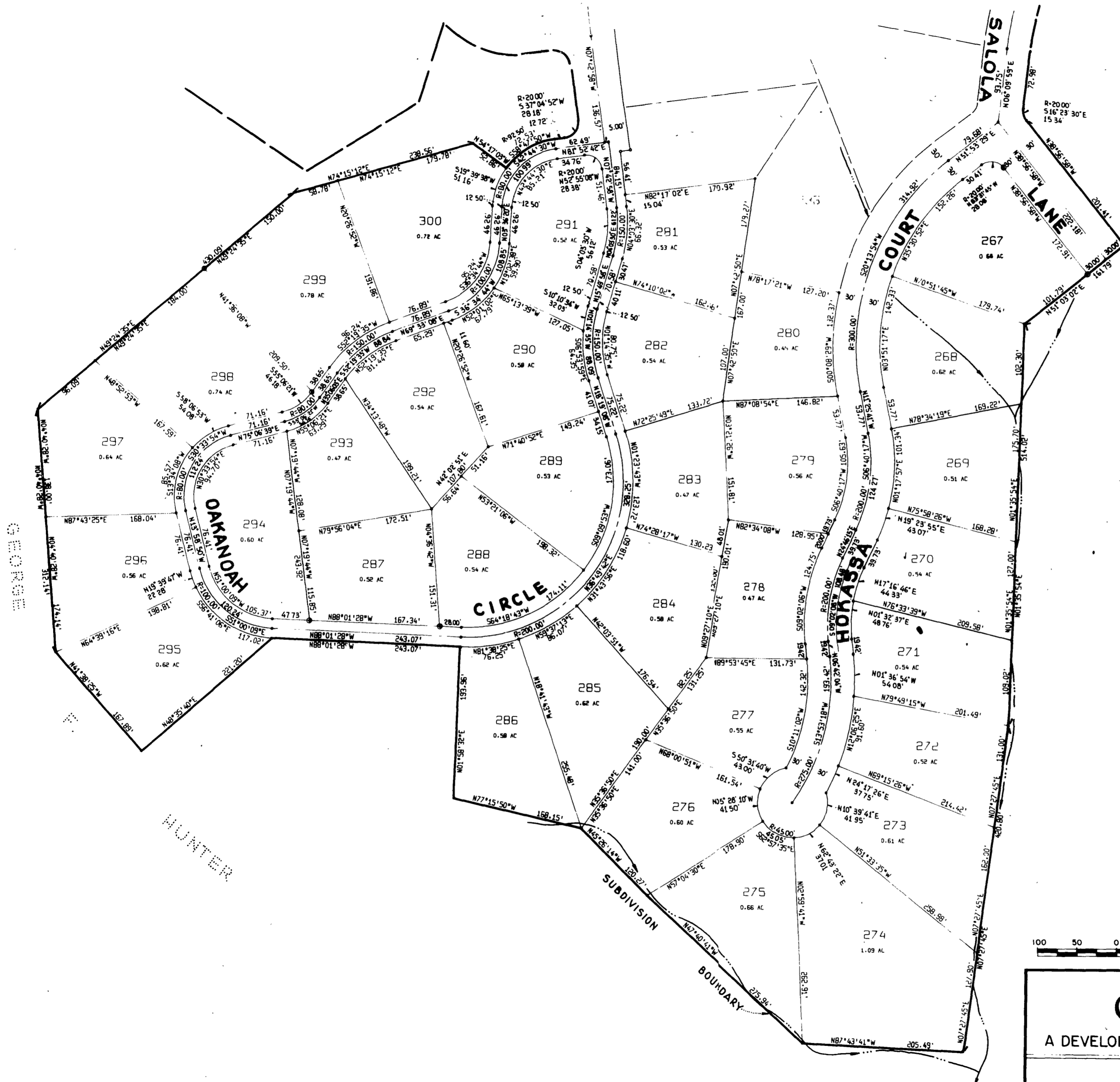
Harry M. Rhinelande
Registered NC 5408



1 2 3 4 5 6

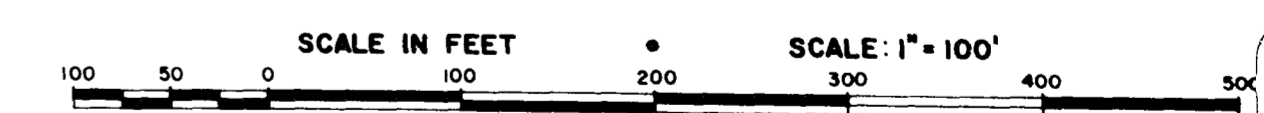
Plat book 4 page 52

452A



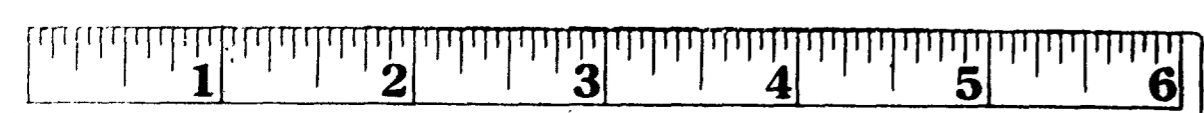
CONNESTEE FALLS DEVELOPMENT CORP.

Plate 4 page 52A



CONNESTEE FALLS UNIT 2
 A DEVELOPMENT OF CONNESTEE FALLS DEVELOPMENT CORP.

OWNER: CONNESTEE FALLS DEVELOPMENT CORP
 LOCATION: DUNNS ROCK & EASTATOE TOWNSHIPS,
 TRANSYLVANIA COUNTY, N.C.
 SURVEY DATE: JUNE-JULY, 1971 • SHEET 2 OF 7 SHEETS



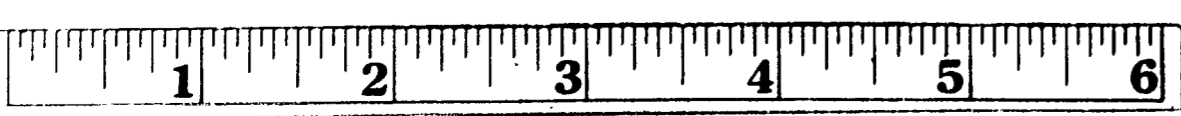
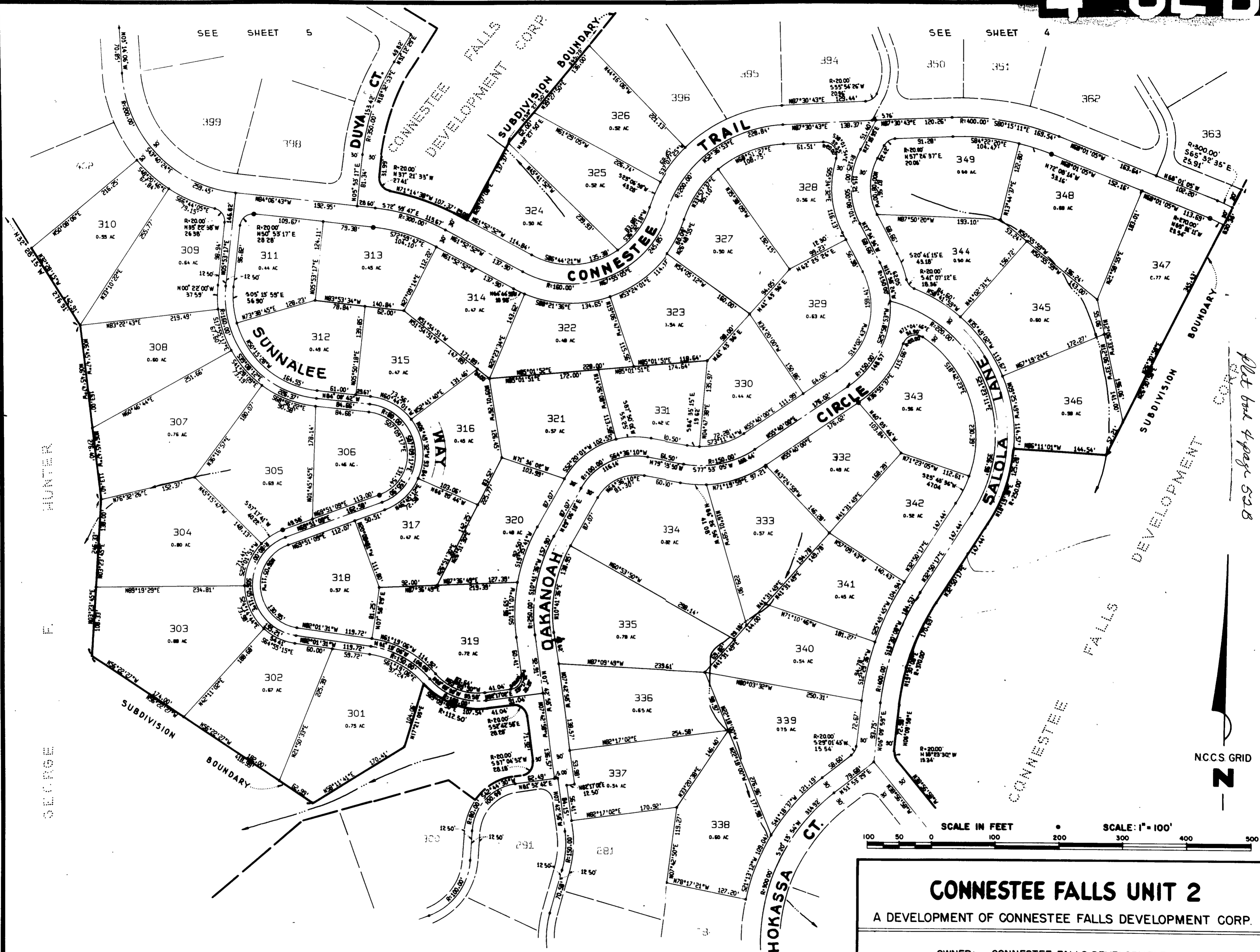
NOTE: ALL MEASUREMENTS ON CURVED LINES ARE CHORD MEASUREMENTS.

SEE SHEET 5

SEE SHEET 4

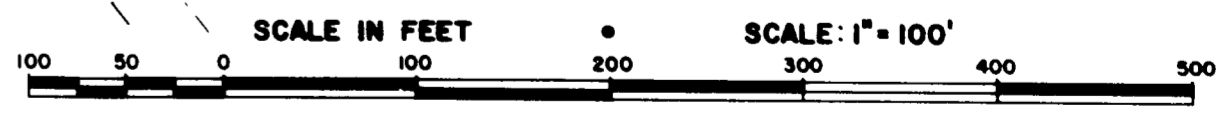
Plot Book 4 page 52-B

Plot Book 4 page 52-B



SEE SHEET 2

NOTE: ALL MEASUREMENTS ON CURVED LINES ARE CHORD MEASUREMENTS.



CONNESTEE FALLS UNIT 2
 A DEVELOPMENT OF CONNESTEE FALLS DEVELOPMENT CORP.

OWNER: CONNESTEE FALLS DEVELOPMENT CORP
 LOCATION: DUNNS ROCK & EASTATOE TOWNSHIPS,
 TRANSYLVANIA COUNTY, N.C.

SURVEY DATE: JUNE-JULY, 1971 • SHEET 3 OF 7 SHEETS

CONNESTEE FALLS DEVELOPMENT CORP.

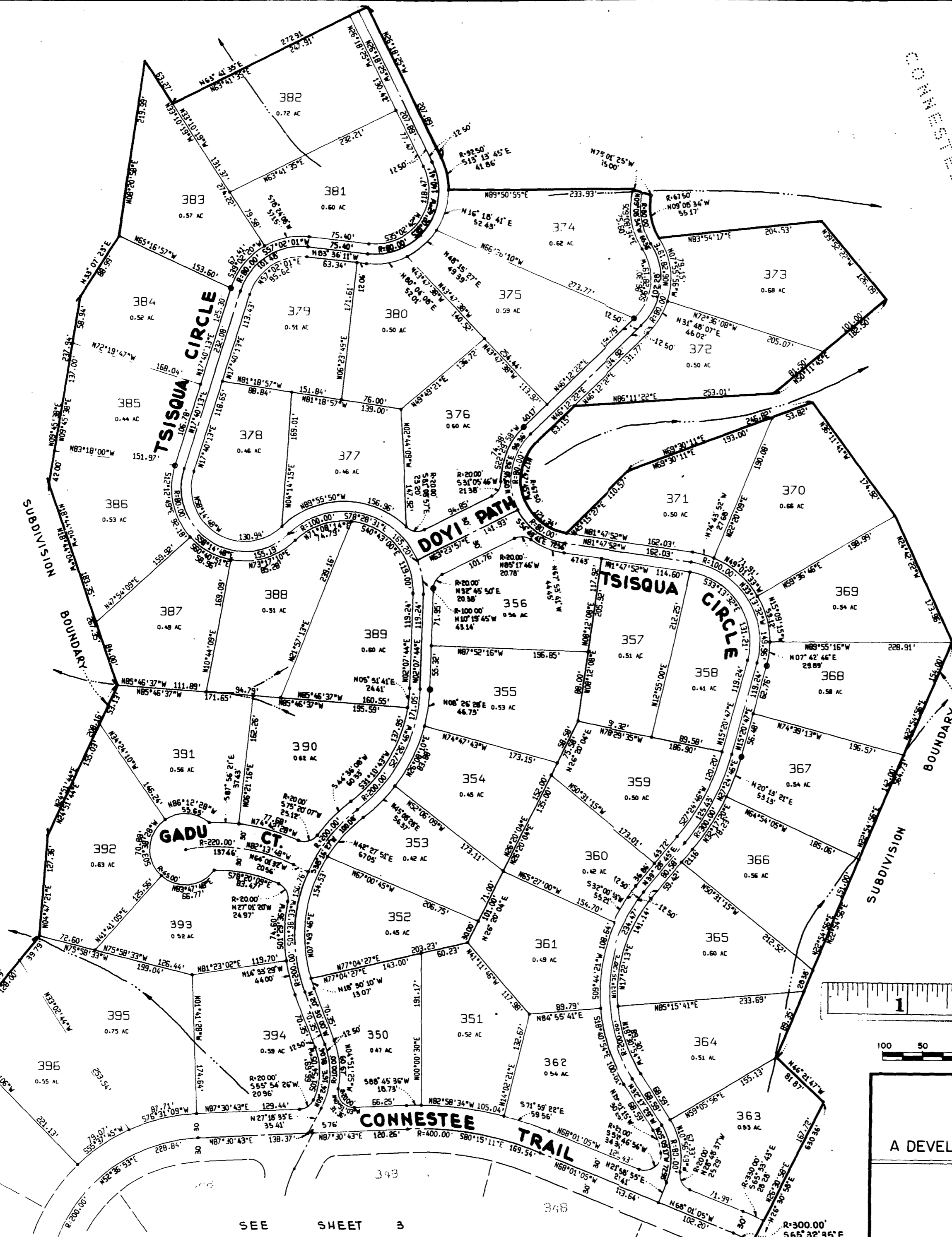
CONNESTEE

FALLS

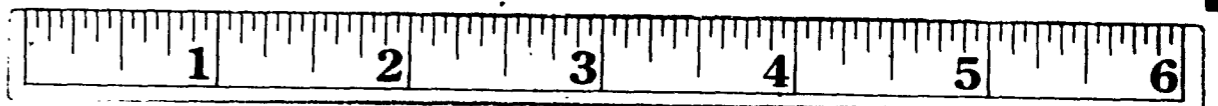
DEVELOPMENT

CORE

Plot for 4 page 52c



NCCS GRID



CONNESTEE FALLS UNIT 2

A DEVELOPMENT OF CONNESTEE FALLS DEVELOPMENT CORP.

OWNER: CONNESTEE FALLS DEVELOPMENT CORP
 LOCATION: DUNNS ROCK & EASTATOE TOWNSHIPS,
 TRANSYLVANIA COUNTY, N.C.

SURVEY DATE: JUNE-JULY, 1971 • SHEET 4 OF 7 SHEETS

SEE SHEET 3

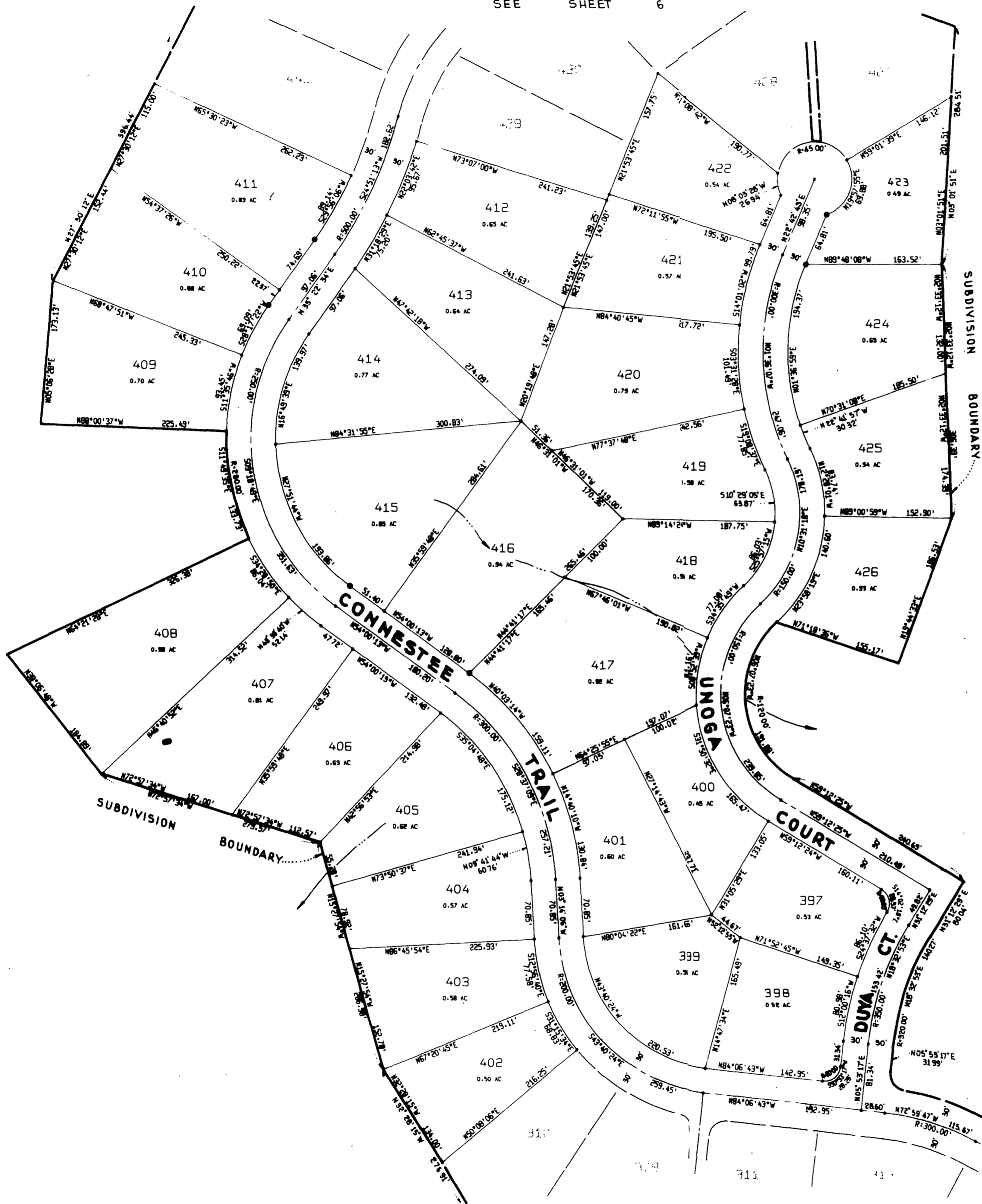
NOTE: ALL MEASUREMENTS ON CURVED LINES ARE CHORD MEASUREMENTS.

4521

GEORGE HUNTER

CONNESTEE FALLS DEVELOPMENT CORP.

Plot here of page 521



SEE SHEET 3

NOTE: ALL MEASUREMENTS ON CURVED LINES ARE CHORD MEASUREMENTS.

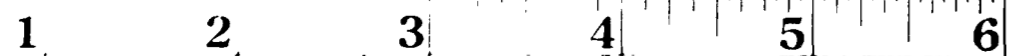


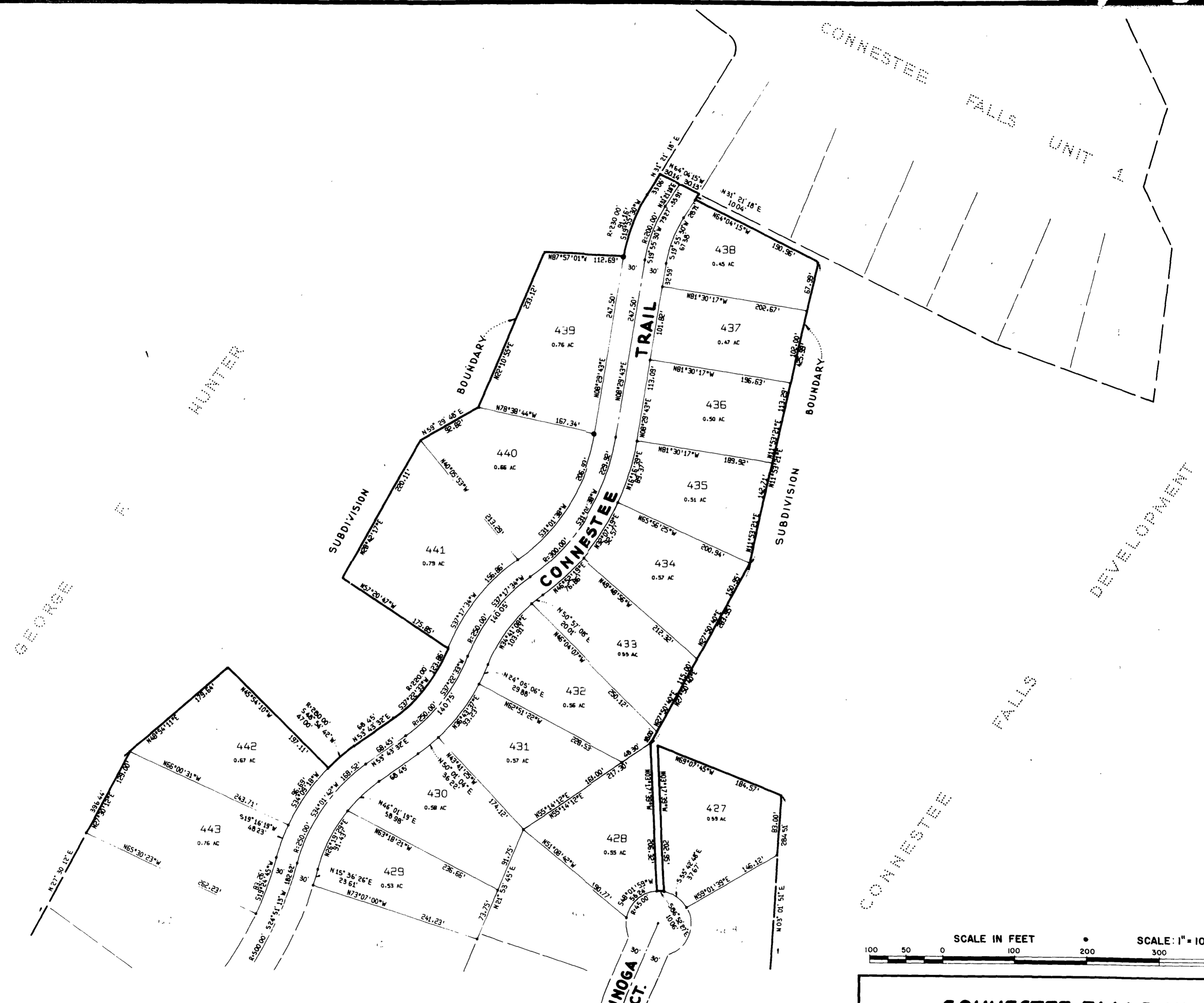
CONNESTEE FALLS UNIT 2

A DEVELOPMENT OF CONNESTEE FALLS DEVELOPMENT CORP.

OWNER: CONNESTEE FALLS DEVELOPMENT CORP
LOCATION: DUNNS ROCK & EASTATOE TOWNSHIPS,
TRANSYLVANIA COUNTY, N.C.

SURVEY DATE: JUNE-JULY, 1971 • SHEET 5 OF 7 SHEETS





Plot back of page 52E

GEORGE

HUNTER

SUBDIVISION

BOUNDARY

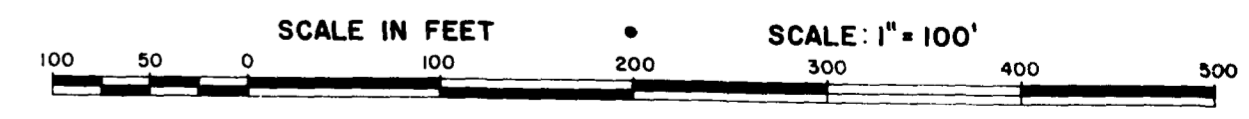
CONNESTEE TRAIL

SUBDIVISION

CONNESTEE FALLS UNIT 1

CONNESTEE FALLS DEVELOPMENT

NCCS GRID



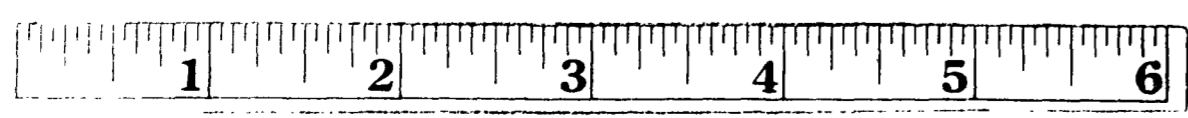
CONNESTEE FALLS UNIT 2

A DEVELOPMENT OF CONNESTEE FALLS DEVELOPMENT CORP.

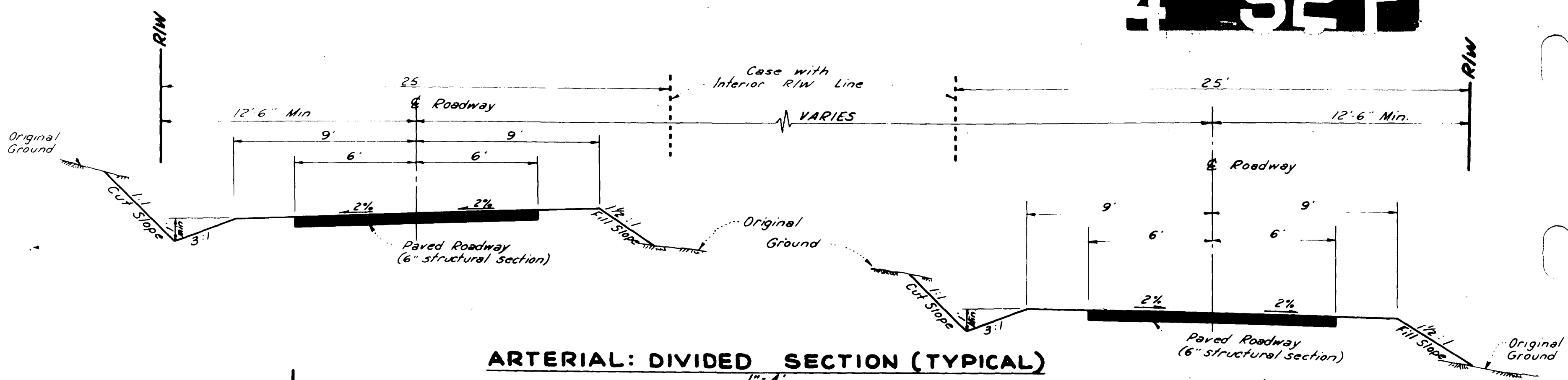
OWNER: CONNESTEE FALLS DEVELOPMENT CORP
 LOCATION: DUNNS ROCK & EASTATOE TOWNSHIPS,
 TRANSYLVANIA COUNTY, N.C.

SURVEY DATE JUNE-JULY, 1971 • SHEET 6 OF 7 SHEETS

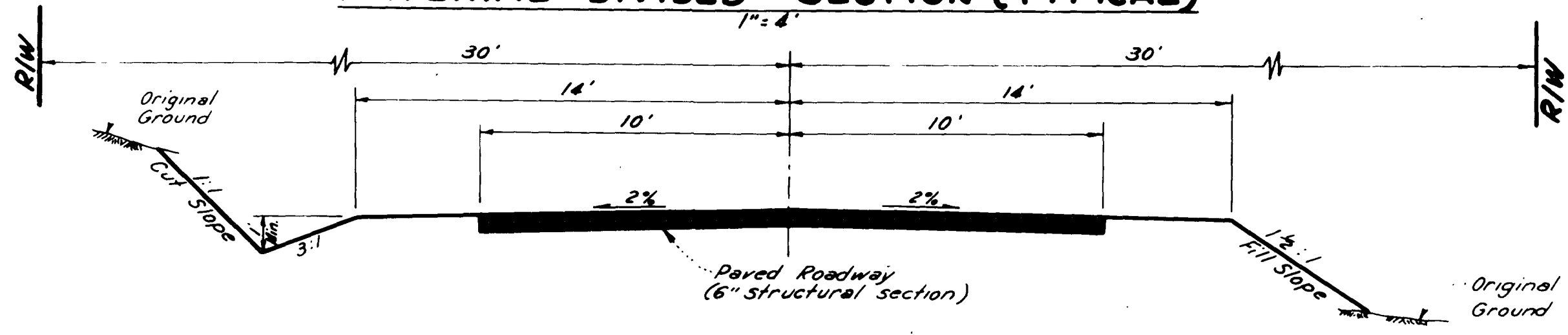
SEE SHEET 5



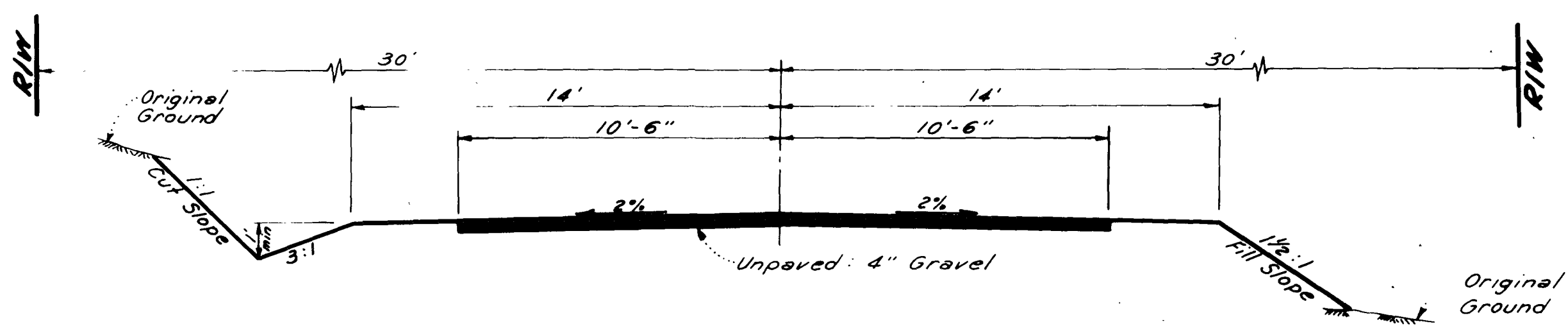
NOTE: ALL MEASUREMENTS ON CURVED LINES ARE CHORD MEASUREMENTS.



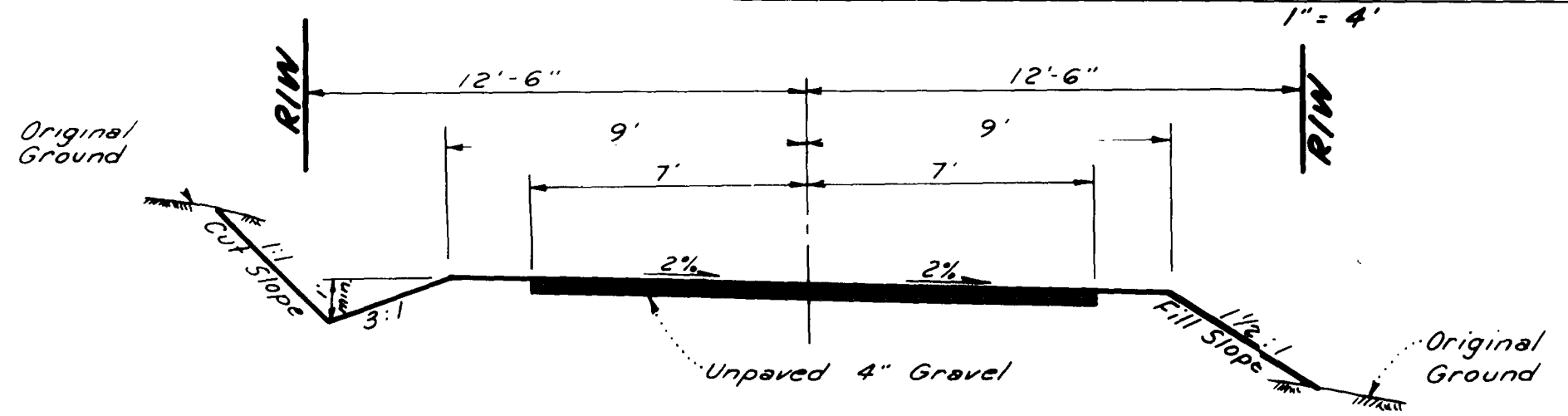
ARTERIAL: DIVIDED SECTION (TYPICAL)



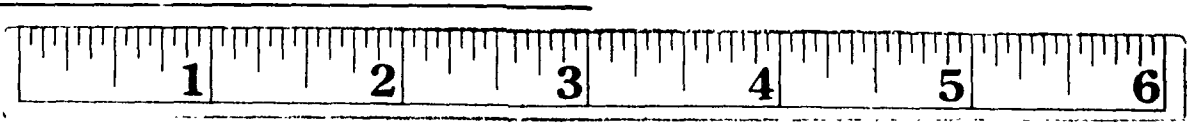
ARTERIAL: 2-LANE SECTION (TYPICAL)



COLLECTOR: 2-LANE SECTION (TYPICAL)



COLLECTOR: 1-WAY SECTION (TYPICAL)



PROPOSED ROADWAY SECTIONS

CONNESTEE FALLS UNIT 2

A DEVELOPMENT OF CONNESTEE FALLS DEVELOPMENT CORP.

OWNER: CONNESTEE FALLS DEVELOPMENT CORP
LOCATION: DUNNS ROCK & EASTATOE TOWNSHIPS,
TRANSYLVANIA COUNTY, N.C.

SURVEY DATE: JUNE-JULY, 1971 • SHEET 7 OF 7 SHEETS

Sheet 4 of page 5 2 F