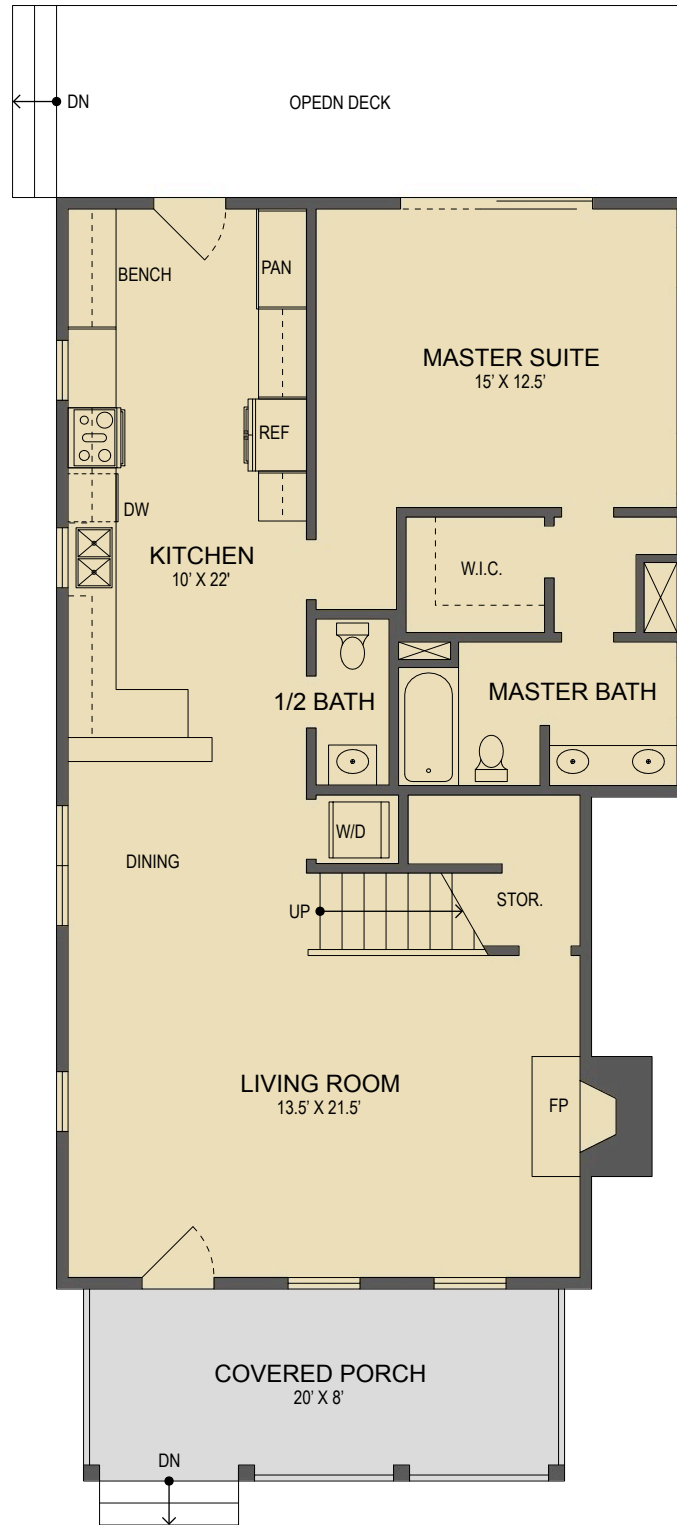


186 Burrell Avenue  
Brevard, NC

UPPER LEVEL LIVING SPACE:	540 SQ. FT.
MAIN LEVEL LIVING SPACE:	1,115 SQ. FT.
<b>TOTAL HEATED LIVING SPACE:</b>	<b>1,655 SQ. FT.</b>
ATTIC STORAGE:	296 SQ. FT.
COVERED FRONT PORCH:	160 SQ. FT.
TOTAL UNDER ROOF:	2,111 SQ. FT.
OPEN DECKS:	211 SQ. FT.

- HEATED LIVING SPACE
- UNHEATED/UNFINISHED/\*BONUS SPACE
- COVERED PORCH
- UNCOVERED DECK/PATIO

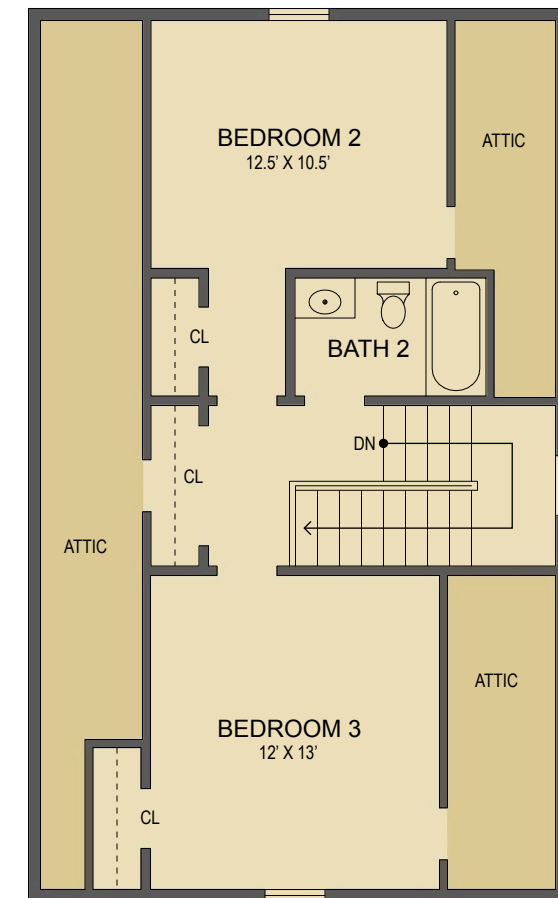
NOTES:  
 \* - LIVING SPACE REQUIRES A MIN. OF 7'-0" CEILING HEIGHT (5'-0" BELOW A SLOPED CEILING, FINISHED SURFACES, HEATED SPACE, & DIRECT CONNECTION WITH OTHER LIVING SPACE. BONUS SPACE SHOWN MEETS SOME BUT NOT ALL OF THESE QUALIFICATIONS  
 1. MEASUREMENTS WERE OBTAINED VIA THE NORTH CAROLINA REAL ESTATE COMMISSION GUIDELINES.  
 2. DIMENSIONS ARE ROUNDED TO THE NEAREST 1/2 FOOT AND ARE APPROXIMATE.  
 3. INFORMATION WITHIN THESE DRAWINGS ARE INTENDED SOLEY FOR THE USE OF REALTY MARKETING. NOT FOR CONSTRUCTION.  
 4. FOR MORE INFORMATION REGARDING MEASUREMENTS, MARKETING FLOOR PLANS, OR REMODEL DESIGN & CONSULTING, CONTACT **WES HOGAN** AT:  
**FeaturedListingsWNC@gmail.com** OR  
**828.577.1917**



Main Level Floor Plan



LOOKING GLASS REALTY  
BREVARD • ASHEVILLE • CASHIERS



Upper Level Floor Plan