

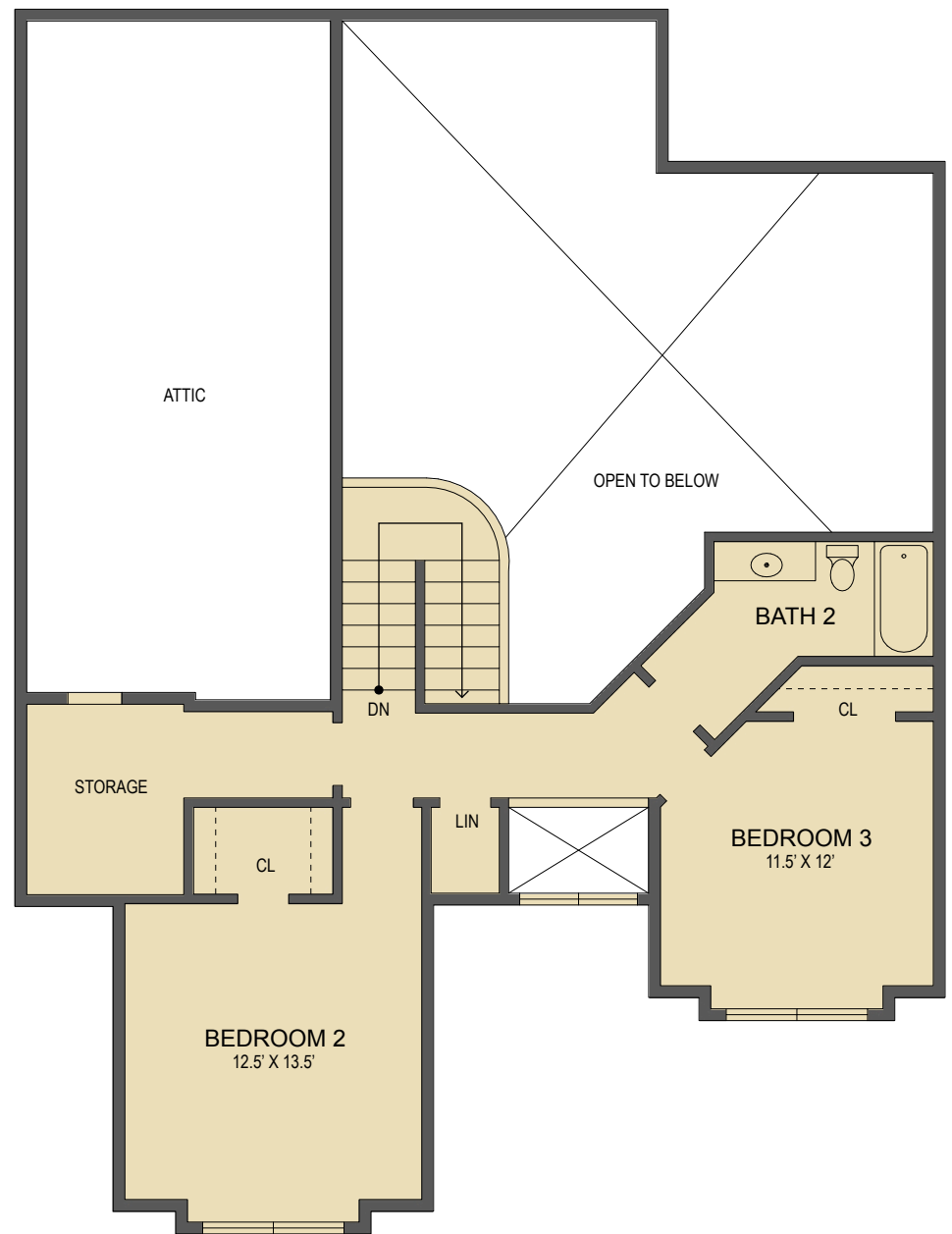


LOOKING GLASS REALTY
BREVARD • ASHEVILLE • CASHIERS

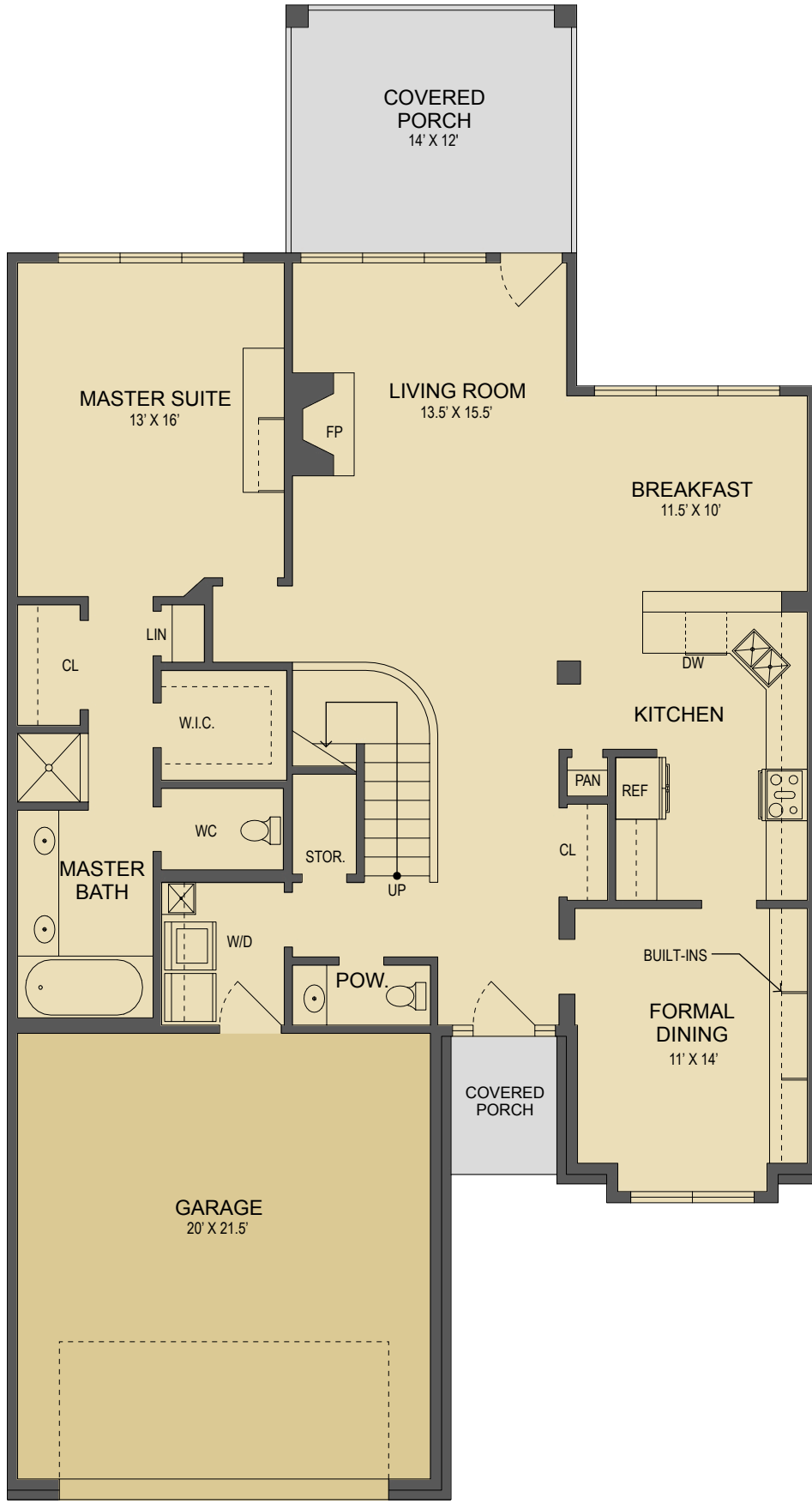
47 Ridgetop Circle
Brevard, NC

MAIN LEVEL LIVING SPACE: 1,438 SQ. FT.
UPPER LEVEL LIVING SPACE: 640 SQ. FT.
TOTAL CONDO LIVING SPACE: 2,078 SQ. FT.

GARAGE: 434 SQ. FT.
COVERED PORCHES: 205 SQ. FT.
TOTAL UNDER ROOF: 2,717 SQ. FT.



Upper Level Floor Plan



Main Level Floor Plan

- HEATED LIVING SPACE
- UNHEATED/UNFINISHED/*BONUS SPACE
- COVERED PORCH
- UNCOVERED DECK/PATIO

NOTES:
* - LIVING SPACE REQUIRES A MIN. OF 7'-0" CEILING HEIGHT (5'-0" BELOW A SLOPED CEILING, FINISHED SURFACES, HEATED SPACE, & DIRECT CONNECTION WITH OTHER LIVING SPACE. BONUS SPACE SHOWN MEETS SOME BUT NOT ALL OF THESE QUALIFICATIONS
1. MEASUREMENTS WERE OBTAINED VIA THE NORTH CAROLINA REAL ESTATE COMMISSION GUIDELINES.
2. DIMENSIONS ARE ROUNDED TO THE NEAREST 1/2 FOOT AND ARE APPROXIMATE.
3. INFORMATION WITHIN THESE DRAWINGS ARE INTENDED SOLELY FOR THE USE OF REALTY MARKETING. NOT FOR CONSTRUCTION.
4. FOR MORE INFORMATION REGARDING MEASUREMENTS, MARKETING FLOOR PLANS, OR REMODEL DESIGN & CONSULTING, CONTACT WES HOGAN AT:
FeaturedListingsWNC@gmail.com OR
828.577.1915

