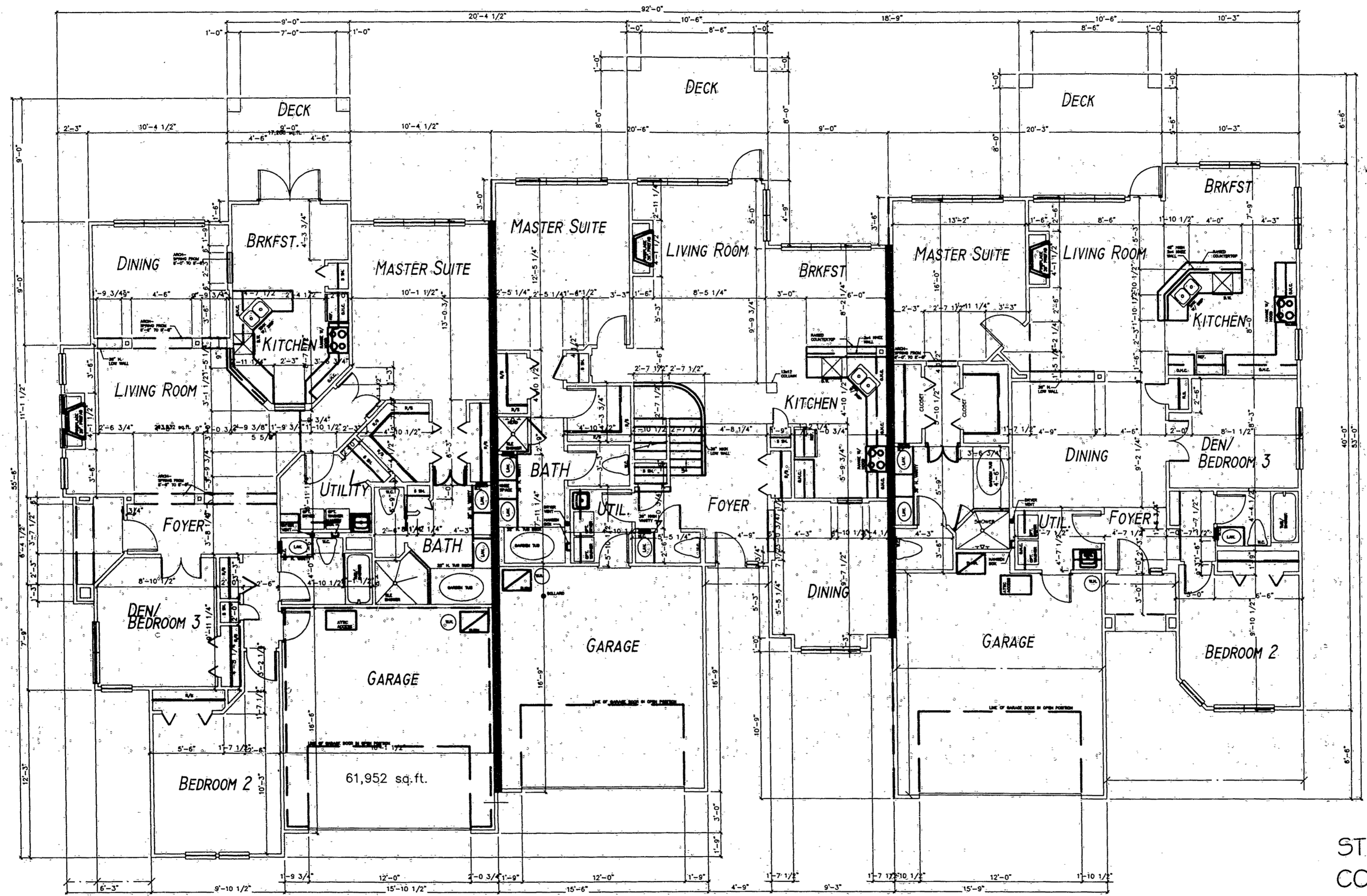


File 9, Slide 138



Filed for registration on the 3rd day of April 2001 at 2:00 o'clock P.M. and registered and verified on the 9th day of April 2001 in Book No. 93 of page 138
 Vickie L. Edwards
 Register of Deeds, Transylvania County
 By: Beth C. Sales, Deputy

MAIN LEVEL FLOOR PLAN
UNIT #201

NOT TO SCALE

FLOOR PLAN	1,832 S.F.
DECK	120 S.F.
GARAGE	430 S.F.
TOTAL SQ. FT.	2,382 S.F.

MAIN LEVEL FLOOR PLAN
UNIT #202

NOT TO SCALE

FLOOR PLAN	2,095 S.F.
DECK	168 S.F.
GARAGE	432 S.F.
TOTAL SQ. FT.	2,695 S.F.

MAIN LEVEL FLOOR PLAN
UNIT #203

NOT TO SCALE

FLOOR PLAN	1,636 S.F.
DECK	168 S.F.
GARAGE	439 S.F.
TOTAL SQ. FT.	2,243 S.F.

STRAUS RIDGE
CONDOMINIUM VILLAGE
PHASE 3

JTD DEVELOPMENT COMPANY OF BREVARD, LLC
BREVARD, NORTH CAROLINA

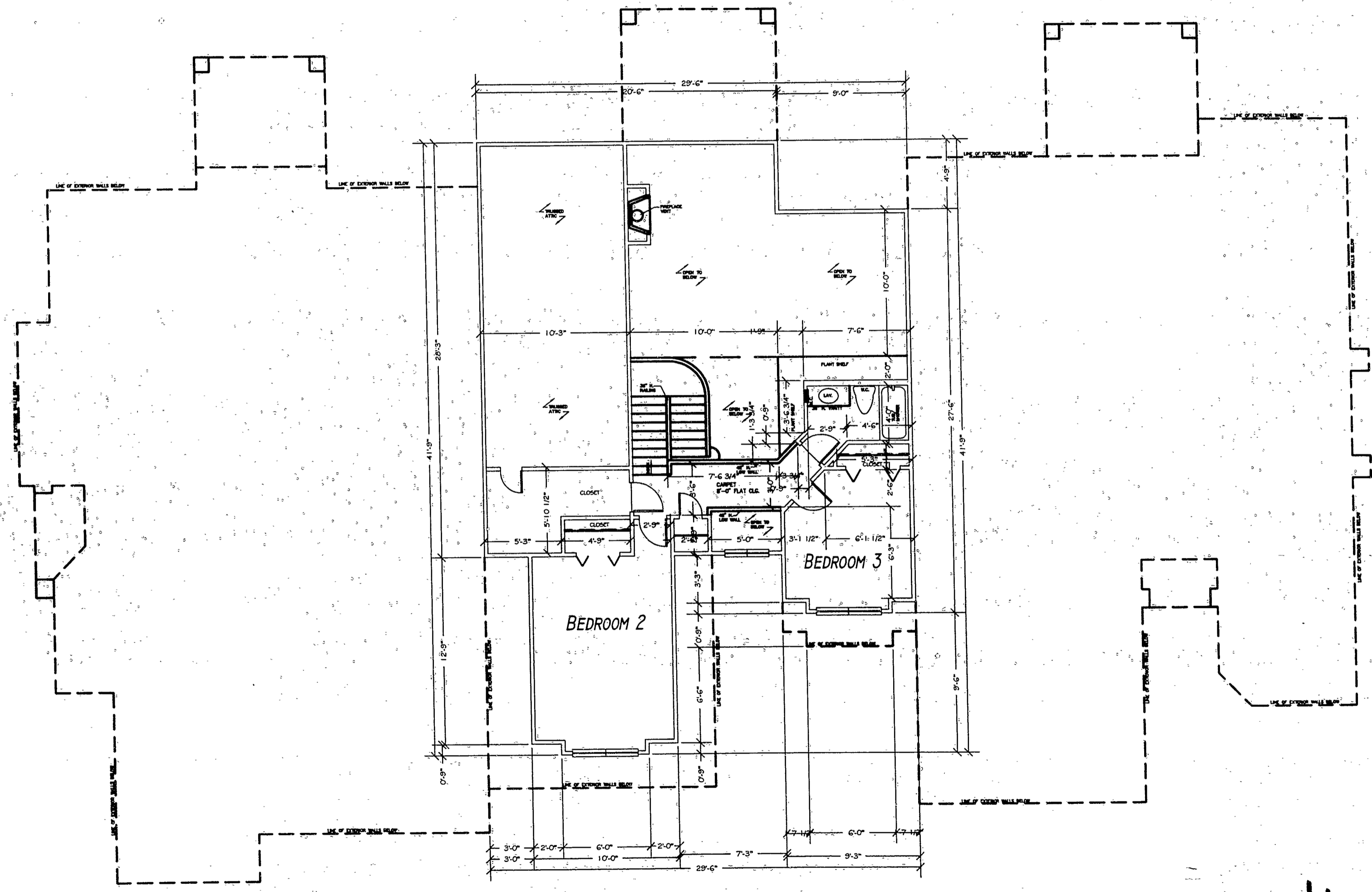


WILLIAM G. LAPSLEY & ASSOCIATES P.A.
 Consulting Engineers & Land Planners
 1655 Asheville Highway
 Post Office Box 546
 Henderson County, North Carolina 28793
 828-697-7334 • Fax 828-697-7335

File 9, Slide 139

File 9, Slide 139

Filed for registration on the 3 day of April 2001 at 2:00 o'clock P.M. and registered and verified on the 3 day of April 2001 in Book 9 of page Slide 139
Vickie L. Edwards
Register of Deeds, Transylvania County
by: Beth C. Sales, Deputy



UPPER LEVEL FLOOR PLAN
UNIT #202
N.T.S.

STRAUS RIDGE
CONDOMINIUM VILLAGE
PHASE 3

JTD DEVELOPMENT COMPANY of BREVARD, LLC
BREVARD, NORTH CAROLINA

3/30/01
[Handwritten signature]

WILLIAM G. LAPSLEY & ASSOCIATES P.A.
Consulting Engineers & Land Planners
1635 Asheville Highway
Post Office Box 548
Henderson County, North Carolina 28793
828-697-7334 • Fax 828-697-7333