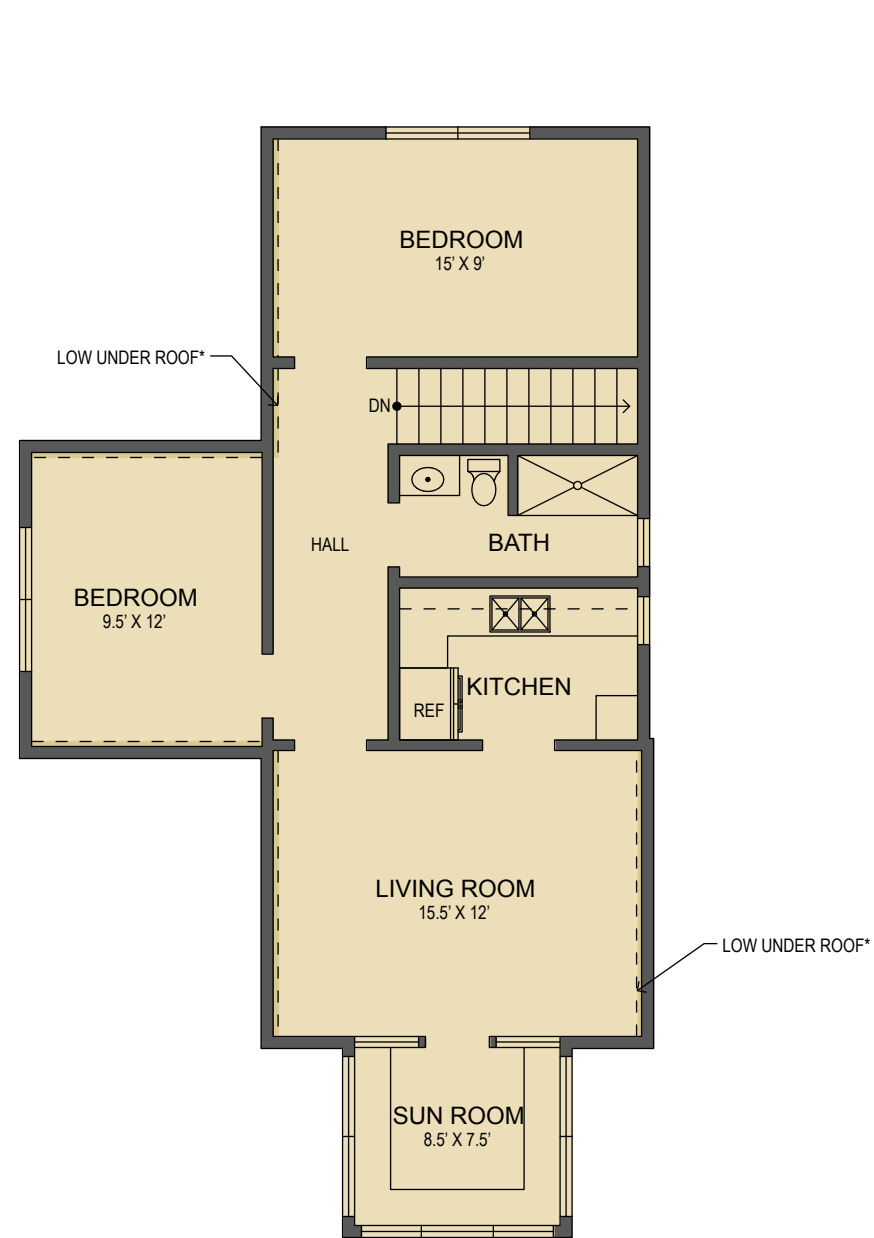
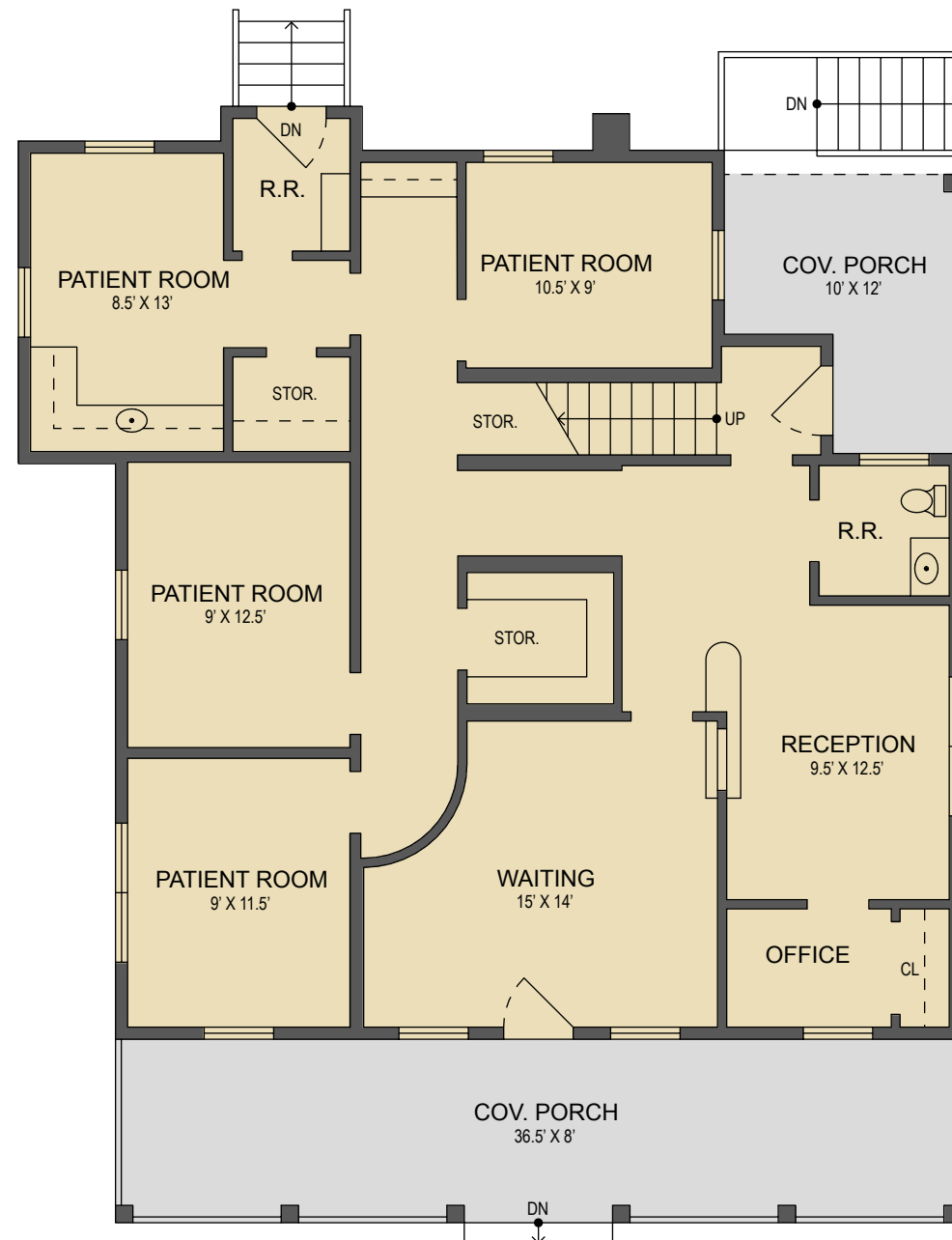




LOOKING GLASS REALTY
BREVARD • ASHEVILLE • CASHIERS



Upper Level Floor Plan



Main Level Floor Plan

31 W. Morgan Street
Brevard, NC

MAIN LEVEL LIVING SPACE:	1,362 SQ. FT.
UPPER LEVEL LIVING SPACE:	790 SQ. FT.
TOTAL HEATED LIVING SPACE:	2,152 SQ. FT.

*BONUS SPACE:	42 SQ. FT.
COVERED PORCHES:	388 SQ. FT.
TOTAL UNDER ROOF:	2,582 SQ. FT.

- HEATED LIVING SPACE
- UNHEATED/UNFINISHED/*BONUS SPACE
- COVERED PORCH
- UNCOVERED DECK/PATIO

NOTES:
 * - LIVING SPACE REQUIRES A MIN. OF 7'-0" CEILING HEIGHT (5'-0") BELOW A SLOPED CEILING, FINISHED SURFACES, HEATED SPACE, & DIRECT CONNECTION WITH OTHER LIVING SPACE. BONUS SPACE SHOWN MEETS SOME BUT NOT ALL OF THESE QUALIFICATIONS
 1. MEASUREMENTS WERE OBTAINED VIA THE NORTH CAROLINA REAL ESTATE COMMISSION GUIDELINES.
 2. DIMENSIONS ARE ROUNDED TO THE NEAREST 1/2 FOOT AND ARE APPROXIMATE.
 3. INFORMATION WITHIN THESE DRAWINGS ARE INTENDED SOLEY FOR THE USE OF REALTY MARKETING. NOT FOR CONSTRUCTION.
 4. FOR MORE INFORMATION REGARDING MEASUREMENTS, MARKETING FLOOR PLANS, OR REMODEL DESIGN & CONSULTING, CONTACT **WES HOGAN** AT:
FeaturedListingsWNC@gmail.com OR
828.577.1915

