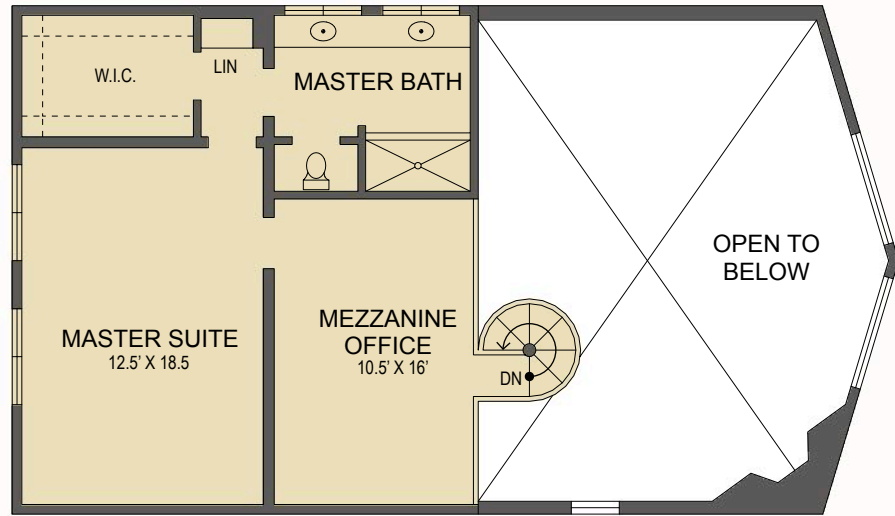
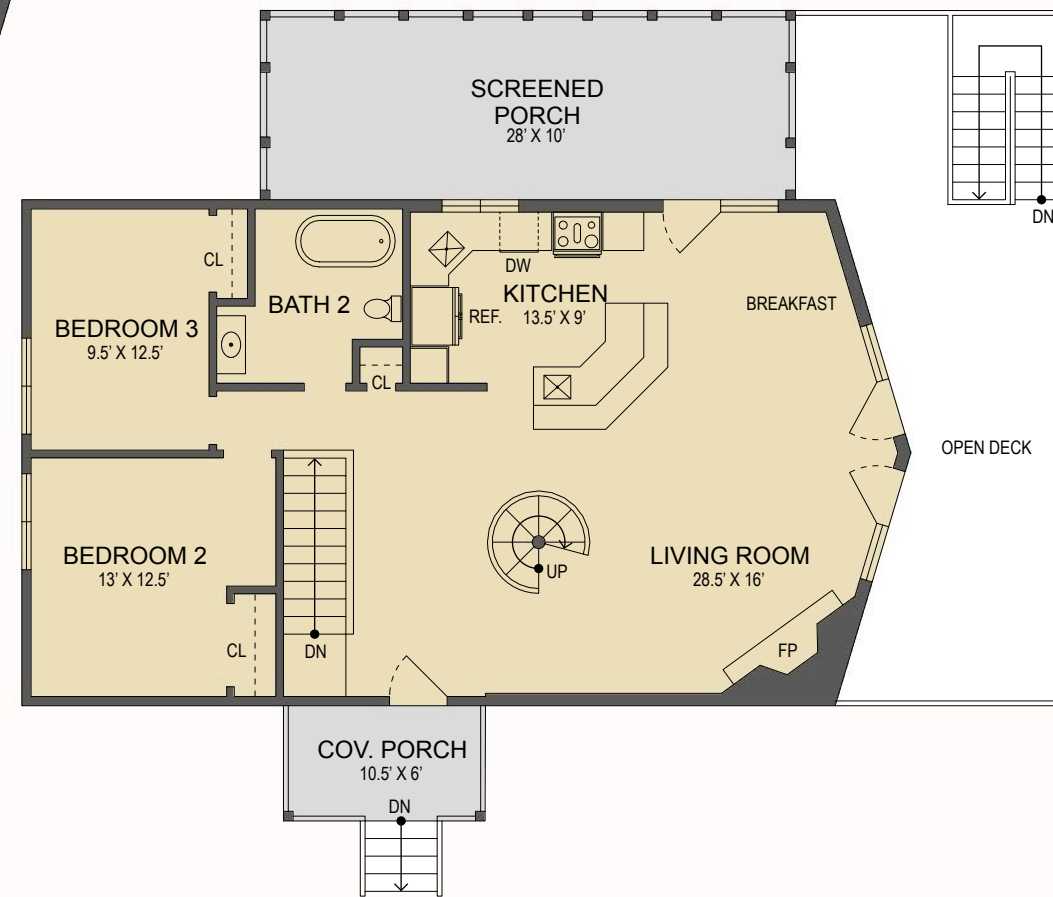




LOOKING GLASS REALTY
BREVARD • ASHEVILLE • CASHIERS



Upper Level Floor Plan



Main Level Floor Plan

- HEATED LIVING SPACE
- UNHEATED/UNFINISHED/*BONUS SPACE
- COVERED PORCH
- UNCOVERED DECK/PATIO

NOTES:
 * - LIVING SPACE REQUIRES A MIN. OF 7'-0" CEILING HEIGHT (5'-0" BELOW A SLOPED CEILING, FINISHED SURFACES, HEATED SPACE, & DIRECT CONNECTION WITH OTHER LIVING SPACE. BONUS SPACE SHOWN MEETS SOME BUT NOT ALL OF THESE QUALIFICATIONS
 1. MEASUREMENTS WERE OBTAINED VIA THE NORTH CAROLINA REAL ESTATE COMMISSION GUIDELINES.
 2. DIMENSIONS ARE ROUNDED TO THE NEAREST 1/2 FOOT AND ARE APPROXIMATE.
 3. INFORMATION WITHIN THESE DRAWINGS ARE INTENDED SOLEY FOR THE USE OF REALTY MARKETING. NOT FOR CONSTRUCTION.
 4. FOR MORE INFORMATION REGARDING MEASUREMENTS, MARKETING FLOOR PLANS, OR REMODEL DESIGN & CONSULTING, CONTACT WES HOGAN AT:
FeaturedListingsWNC@gmail.com OR
828.577.1915

291 Adayahi Court
Brevard, NC

UPPER LEVEL LIVING SPACE:	666 SQ. FT.
MAIN LEVEL LIVING SPACE:	1168 SQ. FT.
BELOW GRADE LIVING SPACE:	812 SQ. FT.
TOTAL HEATED LIVING SPACE:	2,646 SQ. FT.
BASEMENT GARAGE:	340 SQ. FT.
SCREENED PORCH:	275 SQ. FT.
COVERED FRONT PORCH:	63 SQ. FT.
TOTAL UNDER ROOF:	3,324 SQ. FT.
OPEN DECKS:	618 SQ. FT.



Below Grade Level Floor Plan