

164 Sequoyah Drive

MAIN LEVEL LIVING SPACE: 2,533 SQ. FT.
 LOWER LEVEL LIVING SPACE: 988 SQ. FT.
TOTAL HEATED LIVING SPACE: 3,521 SQ. FT.

GARAGE AND SERVICES: 1,539 SQ. FT.
 TOTAL UNDER ROOF: 5,059 SQ. FT.

OPEN DECKS: 1,683 SQ. FT.

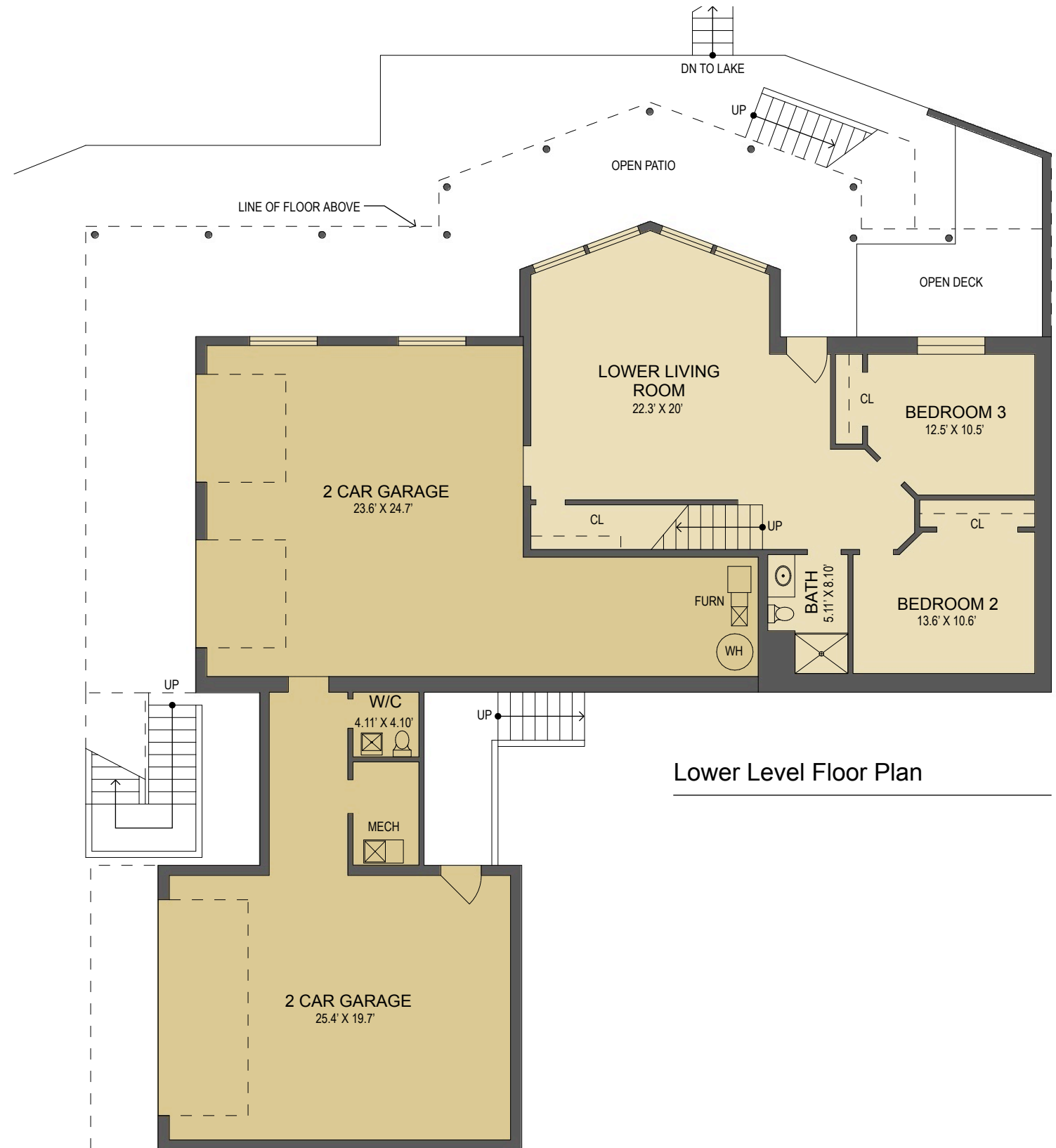


LOOKING GLASS REALTY
 BREVARD • ASHEVILLE • CASHIERS



Main Level Floor Plan

- HEATED LIVING SPACE
- UNHEATED/UNFINISHED/*BONUS SPACE
- COVERED PORCH
- UNCOVERED DECK/PATIO



Lower Level Floor Plan

NOTES:

* - LIVING SPACE REQUIRES A MIN. OF 7'-0" CEILING HEIGHT (5'-0" BELOW A SLOPED CEILING, FINISHED SURFACES, HEATED SPACE, & DIRECT CONNECTION WITH OTHER LIVING SPACE. BONUS SPACE SHOWN MEETS SOME BUT NOT ALL OF THESE QUALIFICATIONS

1. MEASUREMENTS WERE OBTAINED VIA THE NORTH CAROLINA REAL ESTATE COMMISSION GUIDELINES.

2. DIMENSIONS ARE ROUNDED TO THE NEAREST 1/2 FOOT AND ARE APPROXIMATE.

3. INFORMATION WITHIN THESE DRAWINGS ARE INTENDED SOLELY FOR THE USE OF REALTY MARKETING. NOT FOR CONSTRUCTION.

4. FOR MORE INFORMATION REGARDING MEASUREMENTS, MARKETING FLOOR PLANS, OR REMODEL DESIGN & CONSULTING, CONTACT WES HOGAN AT:

FeaturedListingsWNC@gmail.com OR 828.577.1915