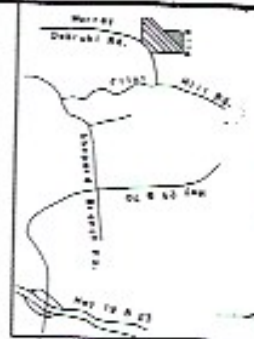


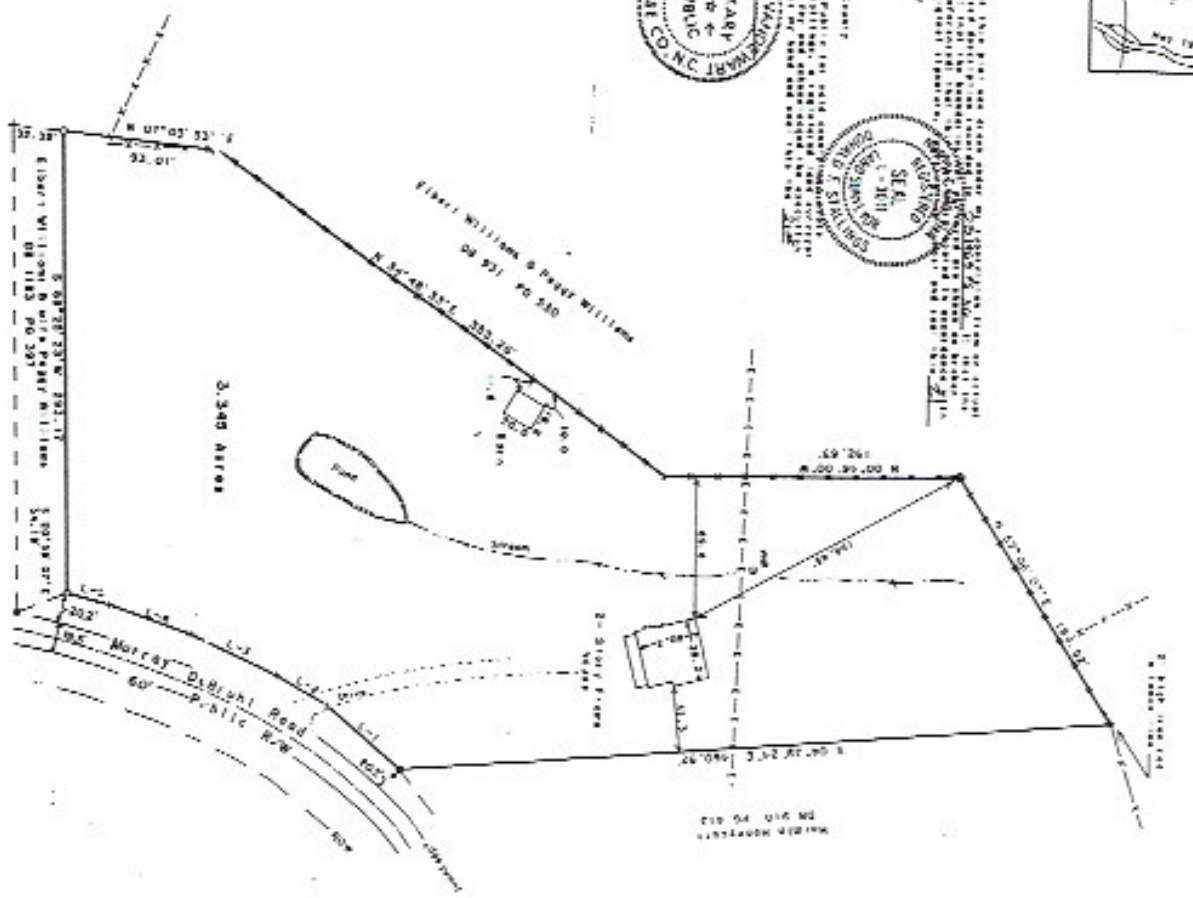
V. C. H. 117-118



This plan is a subdivision of land owned by *William & Peggy Williams* and is shown in accordance with the provisions of the Land Transfer Act, 1925, and the Land Transfer Regulations, 1925, as amended. It is submitted in accordance with the provisions of the Land Transfer Act, 1925, and the Land Transfer Regulations, 1925, as amended. It is submitted in accordance with the provisions of the Land Transfer Act, 1925, and the Land Transfer Regulations, 1925, as amended.

SEAL  
REGISTERED  
SURVEYOR  
No. 1212

SEAL  
NOTARY PUBLIC  
Murray Darlight  
No. 1212



Surveyed by: REFERENCES LEGEND