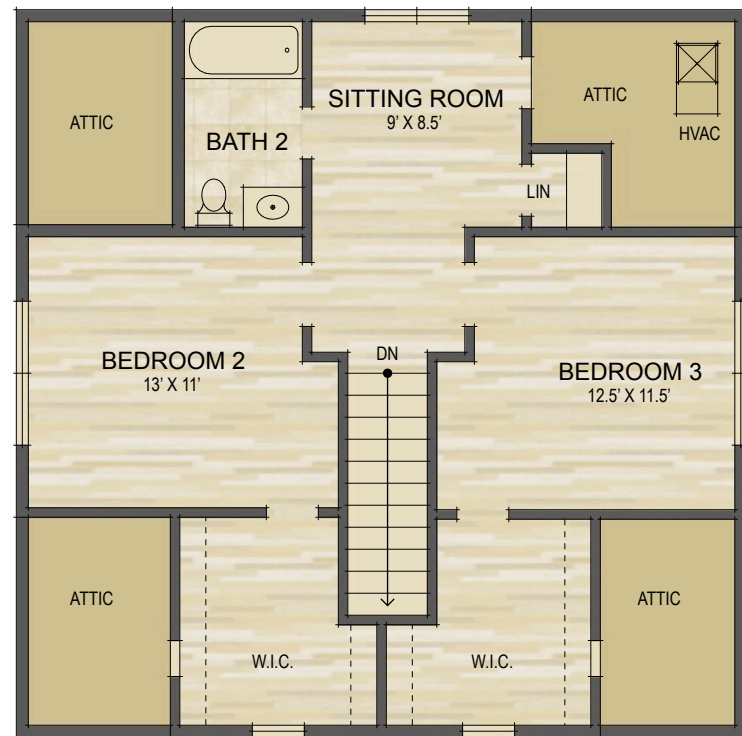


534 Fisher Road
Brevard, NC

UPPER LEVEL LIVING SPACE:	680 SQ. FT.
MAIN LEVEL LIVING SPACE:	919 SQ. FT.
TOTAL HEATED LIVING SPACE:	1,599 SQ. FT.
*BONUS SPACE:	184 SQ. FT.
COVERED FRONT PORCH:	19 SQ. FT.
COVERED BACK DECK:	19 SQ. FT.
TOTAL UNDER ROOF:	1,821 SQ. FT.



Upper Level Floor Plan



Main Level Floor Plan

- HEATED LIVING SPACE
- UNHEATED/UNFINISHED/*BONUS SPACE
- COVERED PORCH
- UNCOVERED DECK/PATIO

NOTES:
 * - LIVING SPACE REQUIRES A MIN. OF 7'-0" CEILING HEIGHT (5'-0") BELOW A SLOPED CEILING, FINISHED SURFACES, HEATED SPACE, & DIRECT CONNECTION WITH OTHER LIVING SPACE. BONUS SPACE SHOWN MEETS SOME BUT NOT ALL OF THESE QUALIFICATIONS
 1. MEASUREMENTS WERE OBTAINED VIA THE NORTH CAROLINA REAL ESTATE COMMISSION GUIDELINES.
 2. DIMENSIONS ARE ROUNDED TO THE NEAREST 1/2 FOOT AND ARE APPROXIMATE.
 3. INFORMATION WITHIN THESE DRAWINGS ARE INTENDED SOLELY FOR THE USE OF REALTY MARKETING. NOT FOR CONSTRUCTION.
 4. FOR MORE INFORMATION REGARDING MEASUREMENTS, MARKETING FLOOR PLANS, OR REMODEL DESIGN & CONSULTING, CONTACT **WES HOGAN** AT:
FeaturedListingsWNC@gmail.com OR **828.577.1915**