

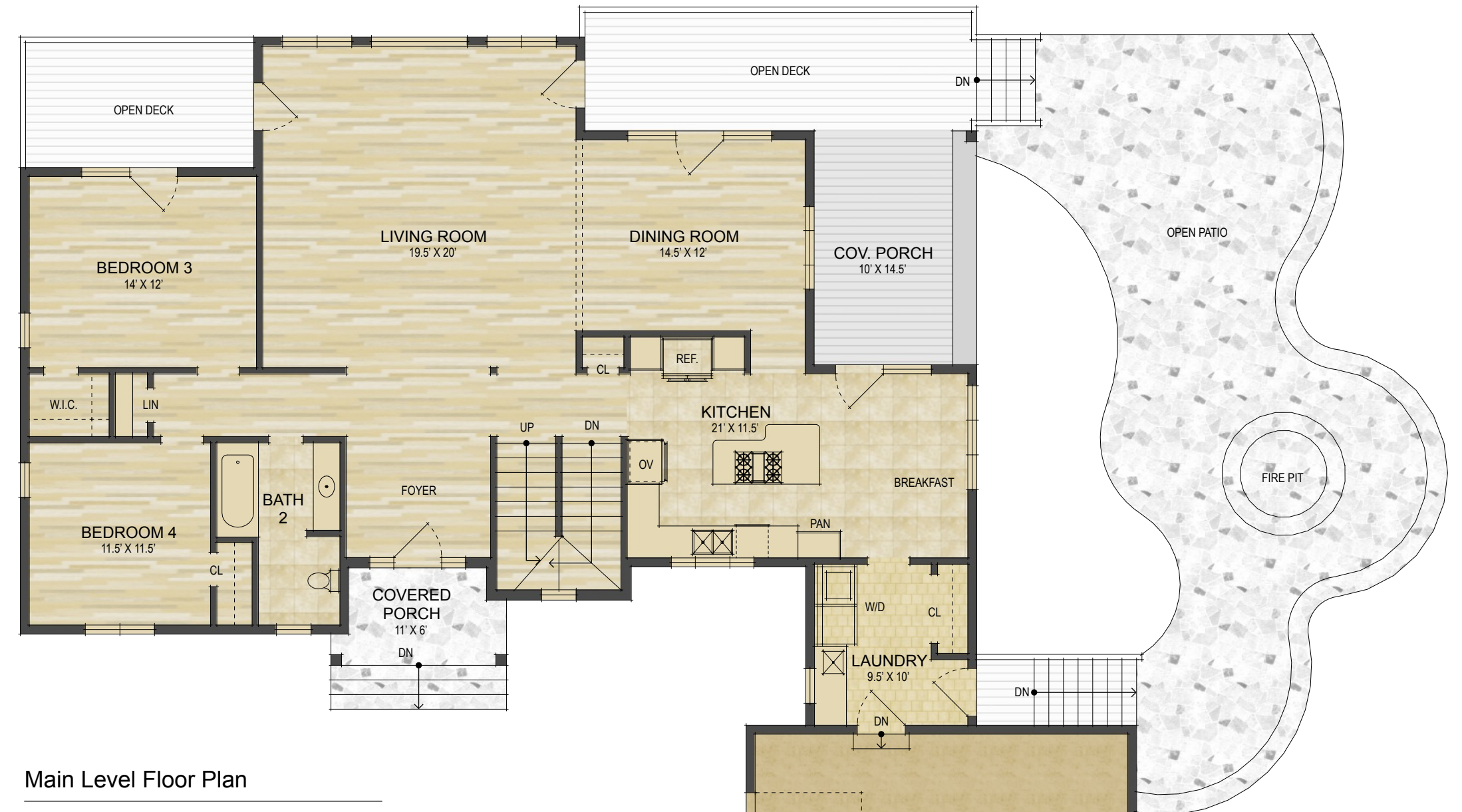
UPPER LEVEL LIVING SPACE:	1,096 SQ. FT.
MAIN LEVEL LIVING SPACE:	1,788 SQ. FT.
BELOW GRADE LIVING SPACE:	879 SQ. FT.
<b>TOTAL HEATED LIVING SPACE:</b>	<b>3,763 SQ. FT.</b>

*UPPER BONUS SPACE:	63 SQ. FT.
UNHEATED/UNFINISHED BASEMENT:	910 SQ. FT.
GARAGE:	598 SQ. FT.
COVERED FRONT PORCH:	58 SQ. FT.
COVERED BACK DECK:	265 SQ. FT.
<b>TOTAL UNDER ROOF:</b>	<b>5,657 SQ. FT.</b>

OPEN DECKS: 459 SQ. FT.



Upper Level Floor Plan



Main Level Floor Plan



Lower Level Floor Plan

- HEATED LIVING SPACE
- UNHEATED/UNFINISHED/\*BONUS SPACE
- COVERED PORCH
- UNCOVERED DECK/PATIO

NOTES:  
 \* - LIVING SPACE REQUIRES A MIN. OF 7'-0" CEILING HEIGHT (5'-0" BELOW A SLOPED CEILING, FINISHED SURFACES, HEATED SPACE, & DIRECT CONNECTION WITH OTHER LIVING SPACE. BONUS SPACE SHOWN MEETS SOME BUT NOT ALL OF THESE QUALIFICATIONS  
 1. MEASUREMENTS WERE OBTAINED VIA THE NORTH CAROLINA REAL ESTATE COMMISSION GUIDELINES.  
 2. DIMENSIONS ARE ROUNDED TO THE NEAREST 1/2 FOOT AND ARE APPROXIMATE.  
 3. INFORMATION WITHIN THESE DRAWINGS ARE INTENDED SOLELY FOR THE USE OF REALTY MARKETING. NOT FOR CONSTRUCTION.  
 4. FOR MORE INFORMATION REGARDING MEASUREMENTS, MARKETING FLOOR PLANS, OR REMODEL DESIGN & CONSULTING, CONTACT WES HOGAN AT:  
 FeaturedListingsWNC@gmail.com OR 828.577.191