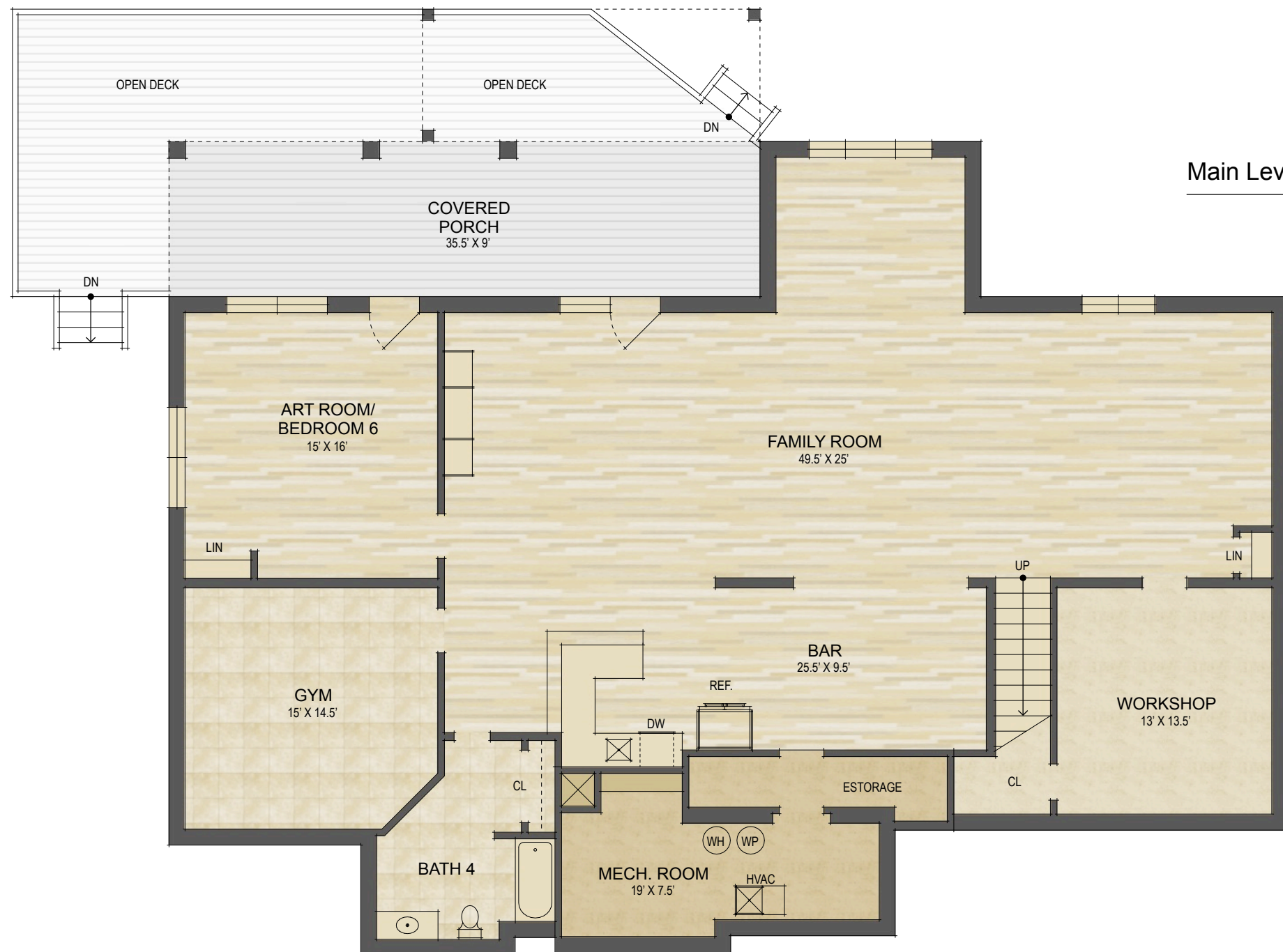
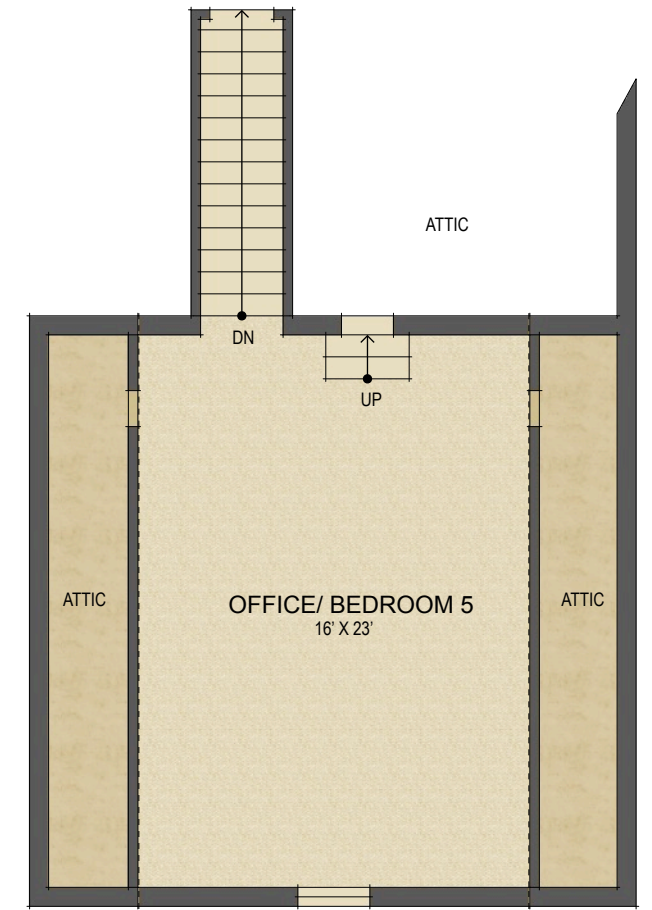


**40 Ulvda Court
Brevard, NC**

UPPER LEVEL LIVING SPACE:	454 SQ. FT.
MAIN LEVEL LIVING SPACE:	2,714 SQ. FT.
BELOW GRADE LIVING SPACE:	2,243 SQ. FT.
TOTAL HEATED LIVING SPACE:	5,411 SQ. FT.
GARAGE:	625 SQ. FT.
COVERED FRONT PORCH:	151 SQ. FT.
COVERED BACK DECK:	327 SQ. FT.
UNHEATED MECHANICAL ROOM:	245 SQ. FT.
TOTAL UNDER ROOF:	6,759 SQ. FT.
OPEN DECKS:	563 SQ. FT.



- HEATED LIVING SPACE
- UNHEATED/UNFINISHED/BONUS SPACE
- COVERED PORCH
- UNCOVERED DECK/PATIO

NOTES:
 * - LIVING SPACE REQUIRES A MIN. OF 7'-0" CEILING HEIGHT (5'-0") BELOW A SLOPED CEILING, FINISHED SURFACES, HEATED SPACE, & DIRECT CONNECTION WITH OTHER LIVING SPACE. BONUS SPACE SHOWN MEETS SOME BUT NOT ALL OF THESE QUALIFICATIONS
 1. MEASUREMENTS WERE OBTAINED VIA THE NORTH CAROLINA REAL ESTATE COMMISSION GUIDELINES.
 2. DIMENSIONS ARE ROUNDED TO THE NEAREST 1/2 FOOT AND ARE APPROXIMATE.
 3. INFORMATION WITHIN THESE DRAWINGS ARE INTENDED SOLEY FOR THE USE OF REALTY MARKETING. NOT FOR CONSTRUCTION.
 4. FOR MORE INFORMATION REGARDING MEASUREMENTS, MARKETING FLOOR PLANS, OR REMODEL DESIGN & CONSULTING, CONTACT WES URBAN AT: FeaturedListingsWNC@gmail.com