







# LOOKING GLASS REALTY

526 Fisher Road  
Brevard, NC

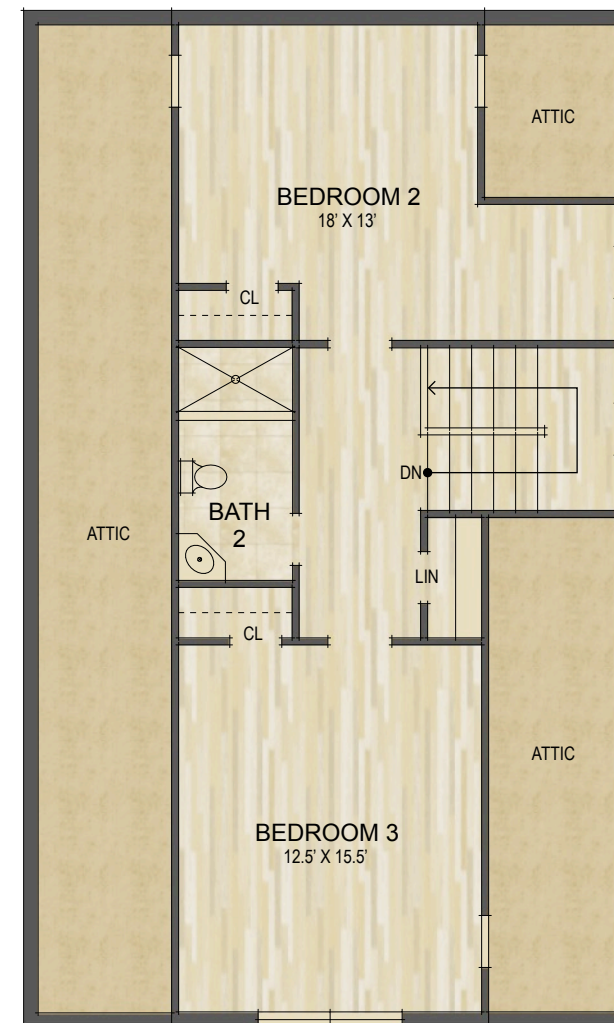
UPPER LEVEL LIVING SPACE:	638 SQ. FT.
MAIN LEVEL LIVING SPACE:	1,073 SQ. FT.
<b>TOTAL HEATED LIVING SPACE:</b>	<b>1,711 SQ. FT.</b>

*UPPER BONUS SPACE:	435 SQ. FT.
COVERED FRONT PORCH:	111 SQ. FT.
COVERED BACK DECK:	64 SQ. FT.
<b>TOTAL UNDER ROOF:</b>	<b>2,321 SQ. FT.</b>

-  HEATED LIVING SPACE
-  UNHEATED/UNFINISHED/\*BONUS SPACE
-  COVERED PORCH
-  UNCOVERED DECK/PATIO



Main Level Floor Plan



Upper Level Floor Plan

NOTES:

- \* - LIVING SPACE REQUIRES A MIN. OF 7'-0" CEILING HEIGHT (5'-0" BELOW A SLOPED CEILING, FINISHED SURFACES, HEATED SPACE, & DIRECT CONNECTION WITH OTHER LIVING SPACE. BONUS SPACE SHOWN MEETS SOME BUT NOT ALL OF THESE QUALIFICATIONS
- 1. MEASUREMENTS WERE OBTAINED VIA THE NORTH CAROLINA REAL ESTATE COMMISSION GUIDELINES.
- 2. DIMENSIONS ARE ROUNDED TO THE NEAREST 1/2 FOOT AND ARE APPROXIMATE.
- 3. INFORMATION WITHIN THESE DRAWINGS ARE INTENDED SOLEY FOR THE USE OF REALTY MARKETING. NOT FOR CONSTRUCTION.
- 4. FOR MORE INFORMATION REGARDING MEASUREMENTS, MARKETING FLOOR PLANS, OR REMODEL DESIGN & CONSULTING, CONTACT **WES HOGAN** AT: [FeaturedListingsWNC@gmail.com](mailto:FeaturedListingsWNC@gmail.com)

