



LOOKING GLASS REALTY

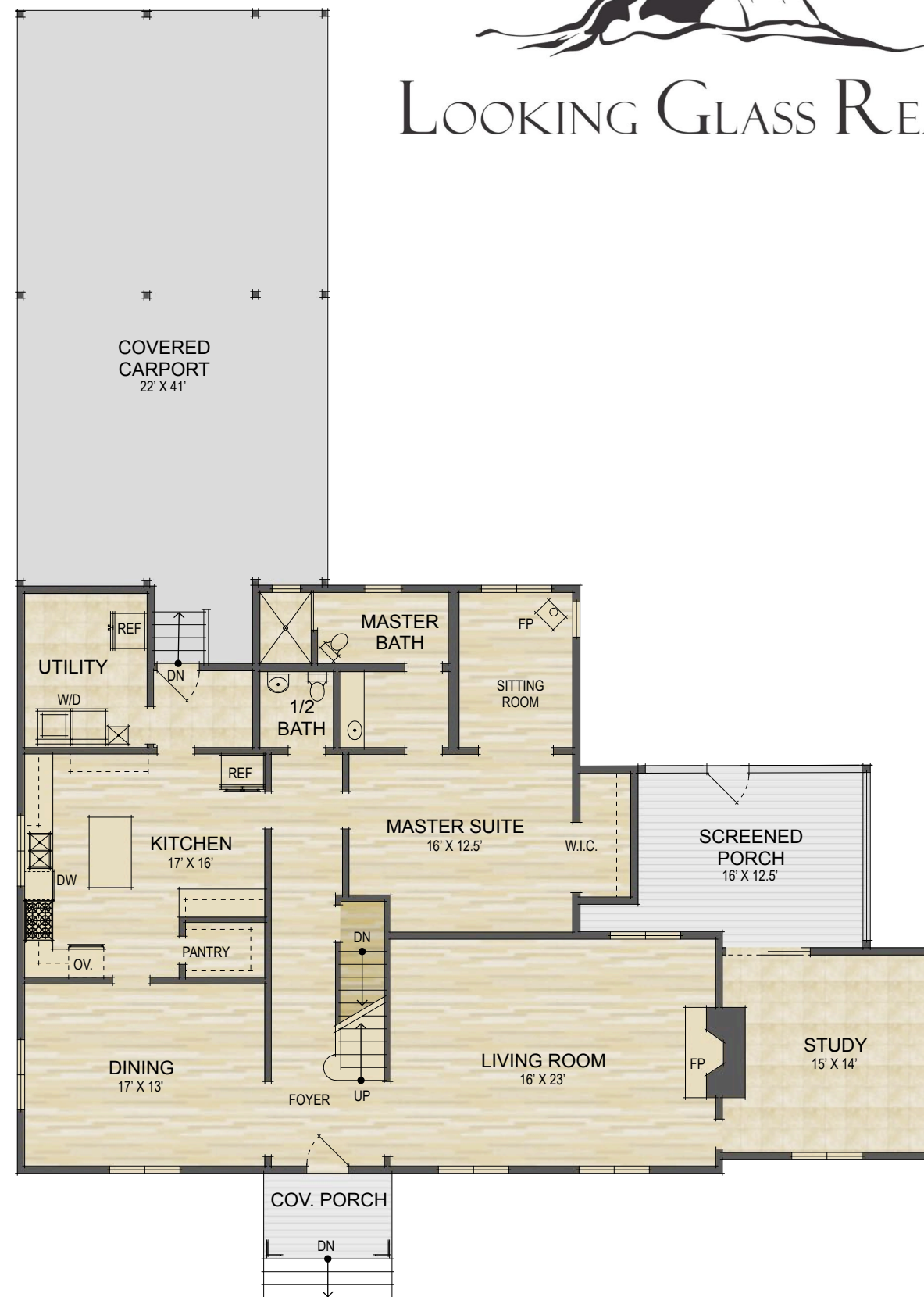
147 Maple Street
Brevard, NC

MAIN LEVEL LIVING SPACE:	2,295 SQ. FT.
UPPER LEVEL LIVING SPACE:	1,135 SQ. FT.
TOTAL HEATED LIVING SPACE:	3,430 SQ. FT.

UNFINISHED BASEMENT:	1,026 SQ. FT.
COVERED CARPORT:	942 SQ. FT.
COV. & SCREENED PORCHES:	258 SQ. FT.
STORAGE SHED:	122 SQ. FT.
TOTAL UNDER ROOF:	5,778 SQ. FT.



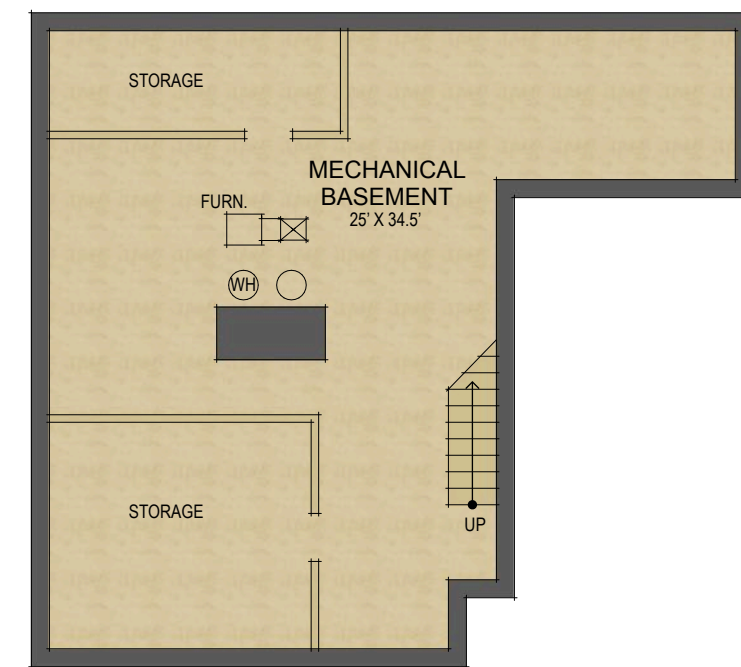
Upper Level Floor Plan



Main Level Plan Sketch

- HEATED LIVING SPACE
- UNHEATED/UNFINISHED/*BONUS SPACE
- COVERED PORCH
- UNCOVERED DECK/PATIO

NOTES:
 * - LIVING SPACE REQUIRES A MIN. OF 7'-0" CEILING HEIGHT (5'-0" BELOW A SLOPED CEILING, FINISHED SURFACES, HEATED SPACE, & DIRECT CONNECTION WITH OTHER LIVING SPACE. BONUS SPACE SHOWN MEETS SOME BUT NOT ALL OF THESE QUALIFICATIONS
 1. MEASUREMENTS WERE OBTAINED VIA THE NORTH CAROLINA REAL ESTATE COMMISSION GUIDELINES.
 2. DIMENSIONS ARE ROUNDED TO THE NEAREST 1/2 FOOT AND ARE APPROXIMATE.
 3. INFORMATION WITHIN THESE DRAWINGS ARE INTENDED SOLELY FOR THE USE OF REALTY MARKETING. NOT FOR CONSTRUCTION.
 4. FOR MORE INFORMATION REGARDING MEASUREMENTS, MARKETING FLOOR PLANS, OR REMODEL DESIGN & CONSULTING, CONTACT **WES HOGAN** AT: FeaturedListingsWNC@gmail.com OR 828.577.191



Below-Grade Level Floor Plan