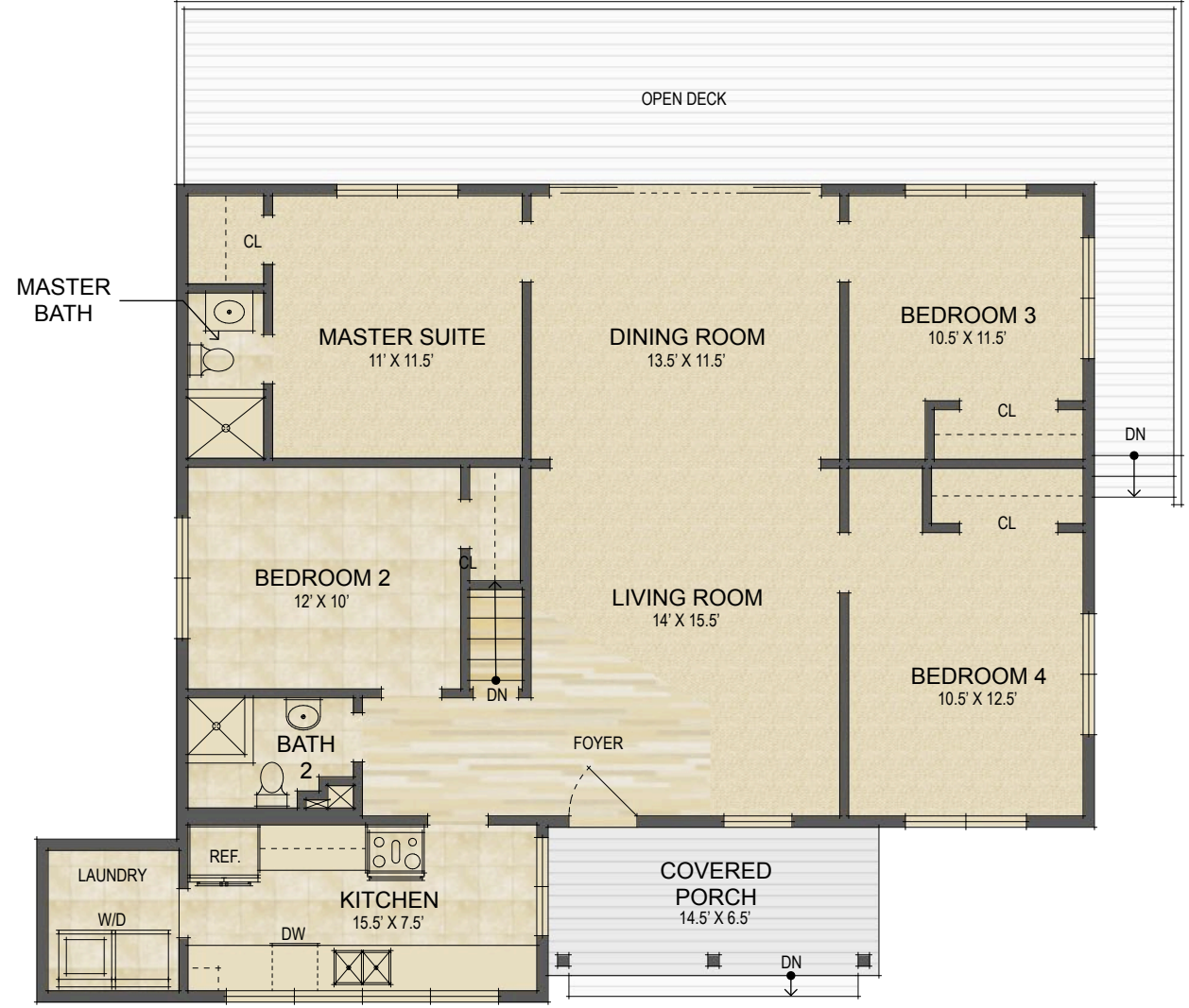
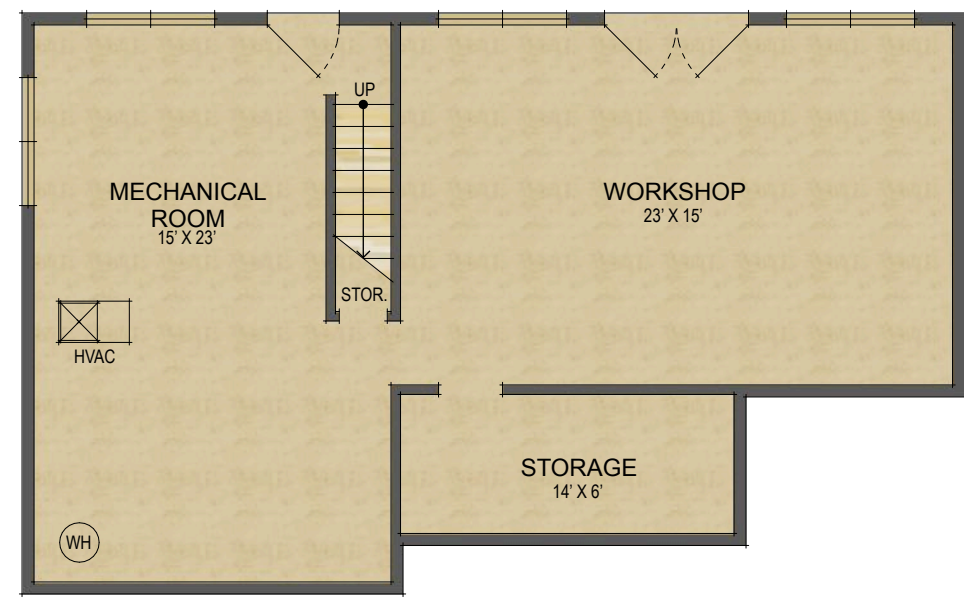


624 Maple Street  
Brevard, NC

MAIN LEVEL LIVING SPACE:	1,317 SQ. FT.
<b>TOTAL HEATED LIVING SPACE:</b>	<b>1,317 SQ. FT.</b>
UNHEATED/UNFINISHED BASEMENT:	847 SQ. FT.
COVERED FRONT PORCH:	95 SQ. FT.
<b>TOTAL UNDER ROOF:</b>	<b>2,259 SQ. FT.</b>
OPEN DECKS:	403 SQ. FT.



Main Level Floor Plan



Lower Level Floor Plan

- HEATED LIVING SPACE
- UNHEATED/UNFINISHED/\*BONUS SPACE
- COVERED PORCH
- UNCOVERED DECK/PATIO

NOTES:  
 \* - LIVING SPACE REQUIRES A MIN. OF 7'-0" CEILING HEIGHT (5'-0") BELOW A SLOPED CEILING, FINISHED SURFACES, HEATED SPACE, & DIRECT CONNECTION WITH OTHER LIVING SPACE. BONUS SPACE SHOWN MEETS SOME BUT NOT ALL OF THESE QUALIFICATIONS  
 1. MEASUREMENTS WERE OBTAINED VIA THE NORTH CAROLINA REAL ESTATE COMMISSION GUIDELINES.  
 2. DIMENSIONS ARE ROUNDED TO THE NEAREST 1/2 FOOT AND ARE APPROXIMATE.  
 3. INFORMATION WITHIN THESE DRAWINGS ARE INTENDED SOLEY FOR THE USE OF REALTY MARKETING. NOT FOR CONSTRUCTION.  
 4. FOR MORE INFORMATION REGARDING MEASUREMENTS, MARKETING FLOOR PLANS, OR REMODEL DESIGN & CONSULTING, CONTACT WES HOGAN AT:  
 FeaturedListingsWNC@gmail.

