

PROPERTY OF CAROLINA
MOUNTAIN POWER COMPANY

CHIMNEY ROCK MOUNTAINS INC.
CHIMNEY ROCK, N.C.

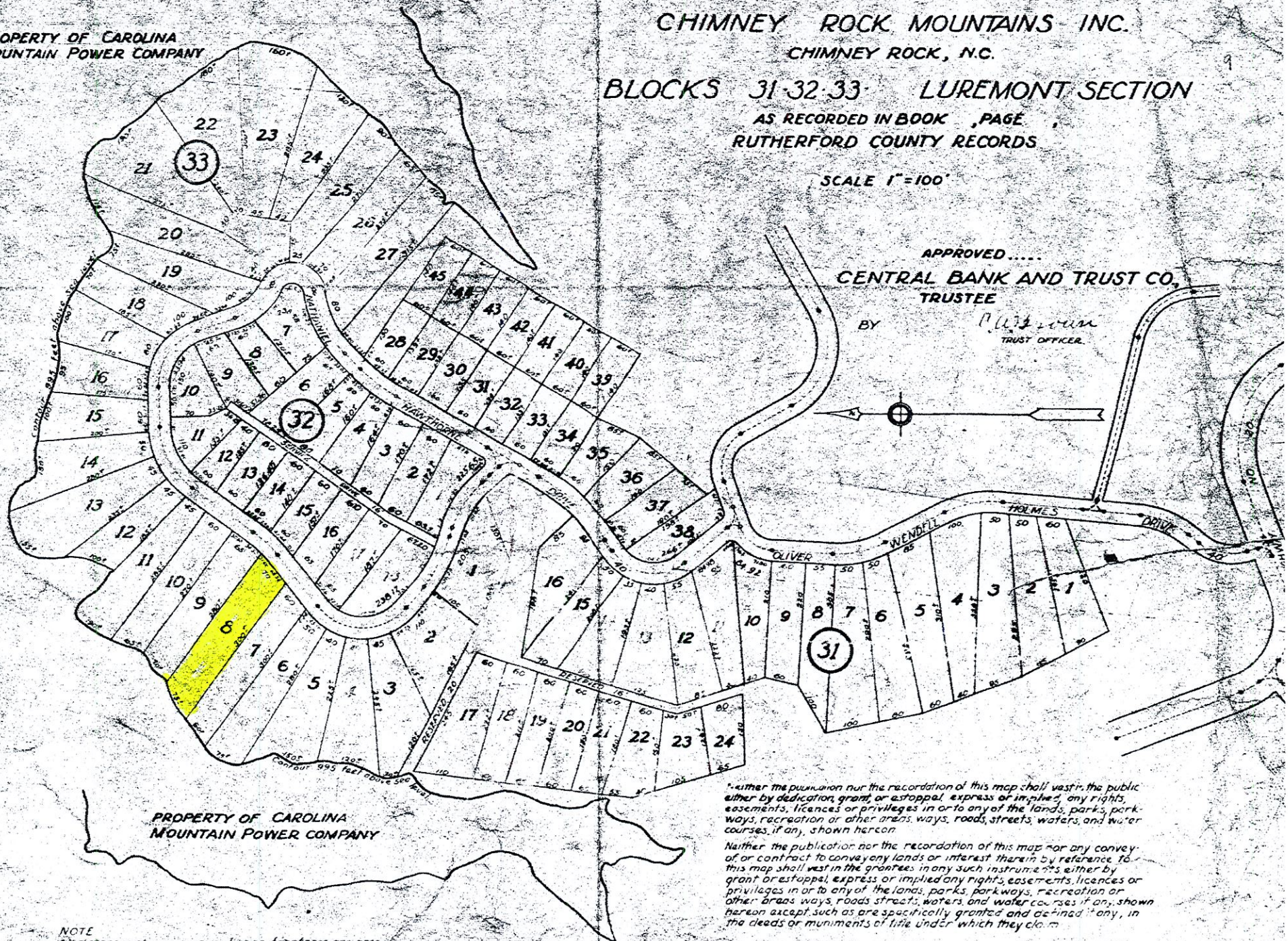
BLOCKS 31-32-33 LUREMONT SECTION
AS RECORDED IN BOOK ,PAGE ,
RUTHERFORD COUNTY RECORDS

SCALE 1"=100'

APPROVED.....
CENTRAL BANK AND TRUST CO.
TRUSTEE

BY

P. L. ...
TRUST OFFICER.



NOTE
All distances shown on curvilinear frontages are arcs

Neither the publication nor the recordation of this map shall vest the public either by dedication, grant, or estoppel, express or implied, any rights, easements, licences or privileges in or to any of the lands, parks, parkways, recreation or other areas, ways, roads, streets, waters, and water courses, if any, shown hereon

Neither the publication nor the recordation of this map nor any conveyance or contract to convey any lands or interest therein by reference to this map shall vest in the grantees in any such instruments either by grant or estoppel, express or implied any rights, easements, licences or privileges in or to any of the lands, parks, parkways, recreation or other areas, ways, roads, streets, waters, and water courses if any, shown hereon except such as are specifically granted and defined if any, in the deeds or muniments of title under which they claim

Copy

Book Deed Page
0725 0086

FRED W. NOBLE, JR.
and wife ELLIENE J. NOBLE
516-2159

MORIS V. BRUNNER
See Map 16472 L
By This Office

THIS MAP IS NOT A CERTIFIED SURVEY AND HAS NOT BEEN REVIEWED BY A LOCAL GOVERNMENT AGENCY FOR COMPLIANCE WITH ANY APPLICABLE LAND DEVELOPMENT REGULATIONS.

0.41 ACRES
18,350 sq. ft.

