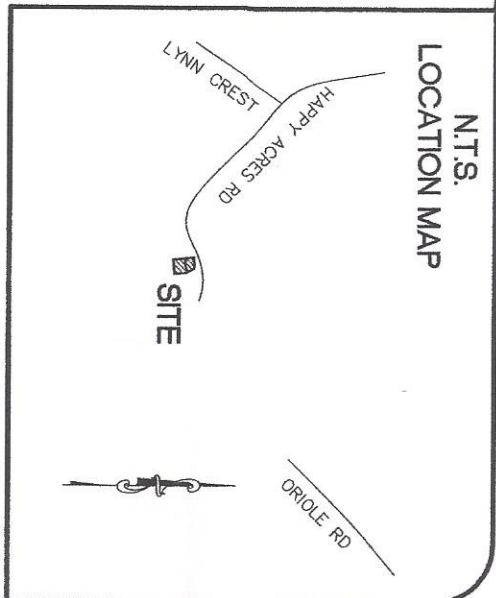


NOTE:
ALL CAPS ARE 2" ALUMINUM CAPS
STAMPED WITH STATION NUMBER & DATE.

- ### LEGEND
- PT. POINT
 - IPS IRON PIN SET
 - IPF IRON PIN FOUND
 - R/W RIGHT-OF-WAY
 - OHE OVERHEAD ELECTRIC LINE
 - ☀ LIGHT POLE

N.T.S.
LOCATION MAP



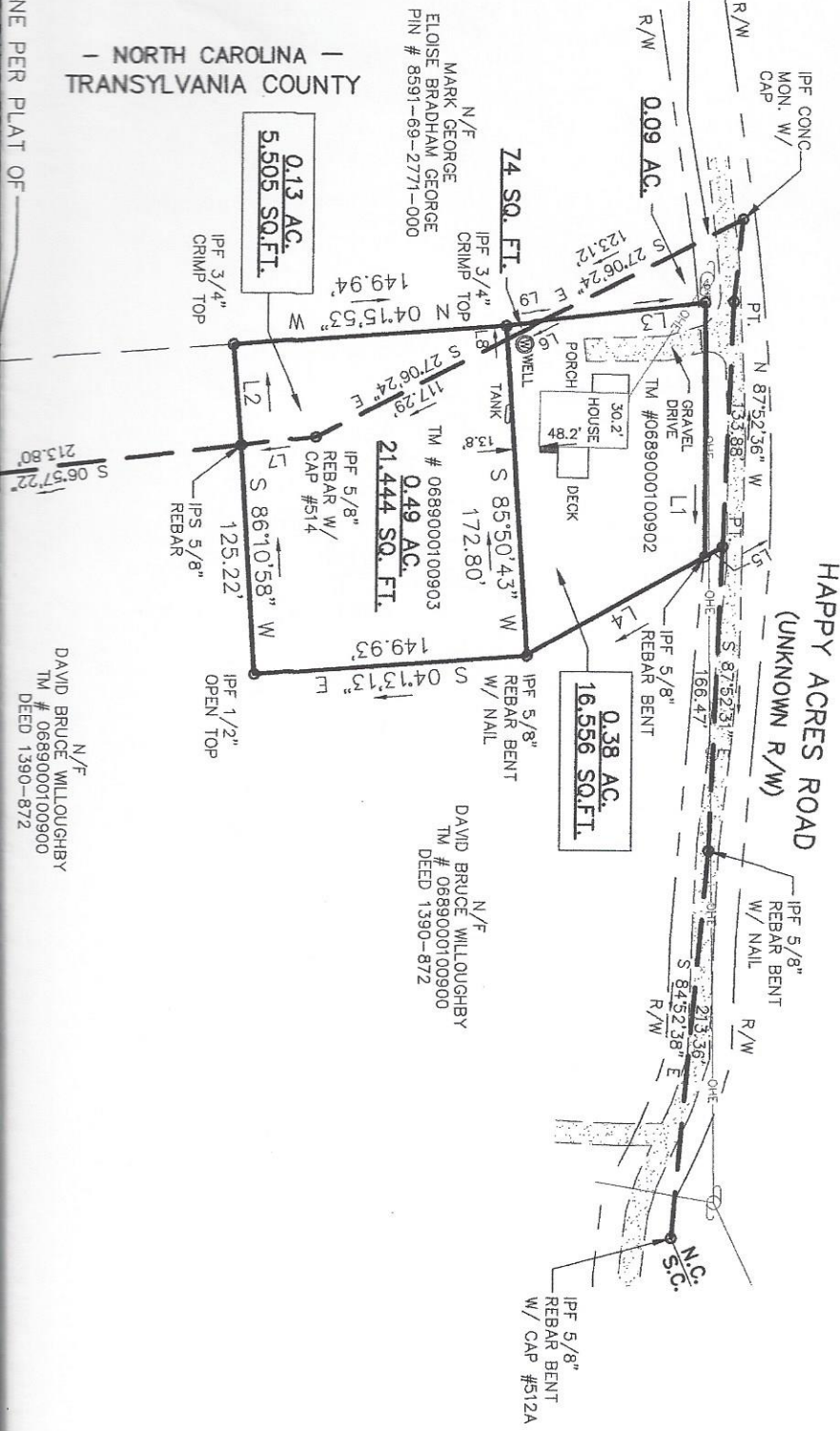
— NORTH CAROLINA —
TRANSYLVANIA COUNTY

N/F
SARAH C. NAPIER ET AL
PIN # 8592-71-7932-000

PROPERTY LINE PER N.C. /
S.C. STATE BOUDARY PLAT
BY CONCORD ENGINEERING &
SURVEYING DATED
10-07-2005

— NORTH CAROLINA —
TRANSYLVANIA COUNTY

PROPERTY LINE PER PLAT OF



N/F
DAVID BRUCE WILLOUGHBY
TM # 0689000100900
DEED 1390-872