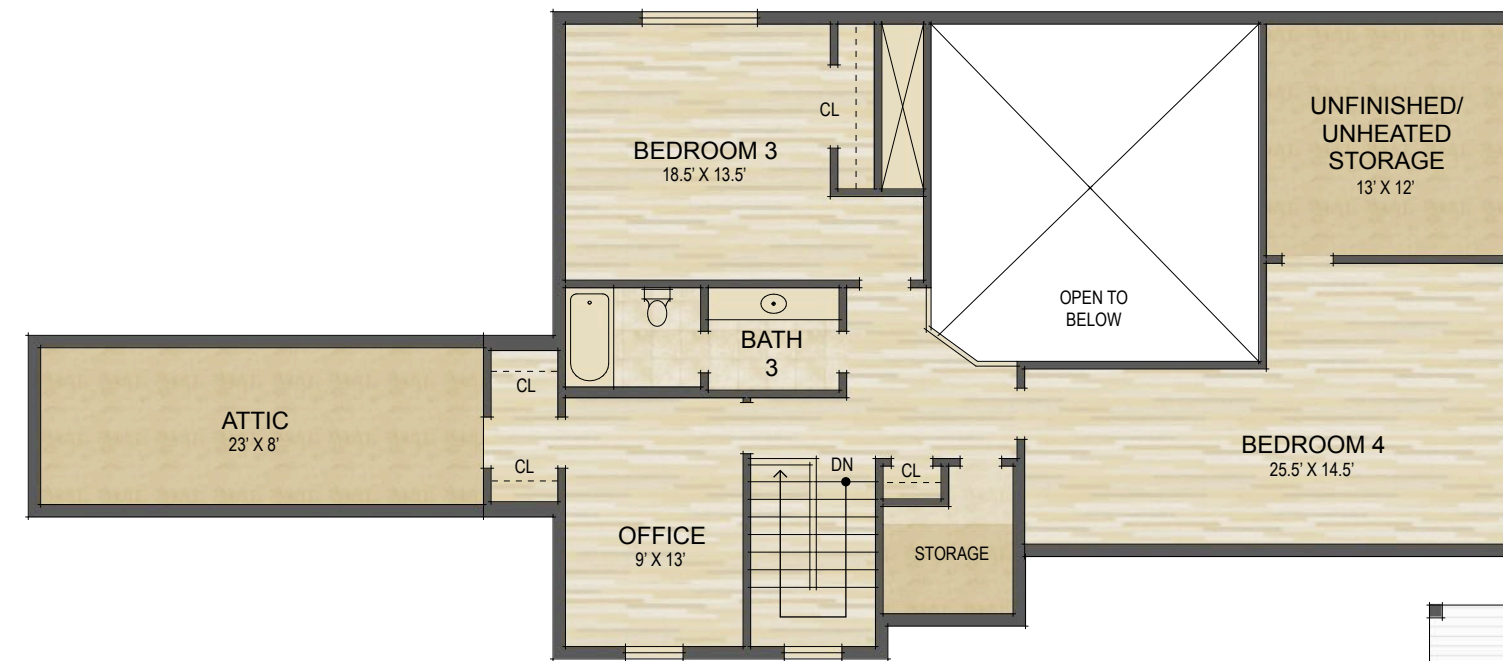




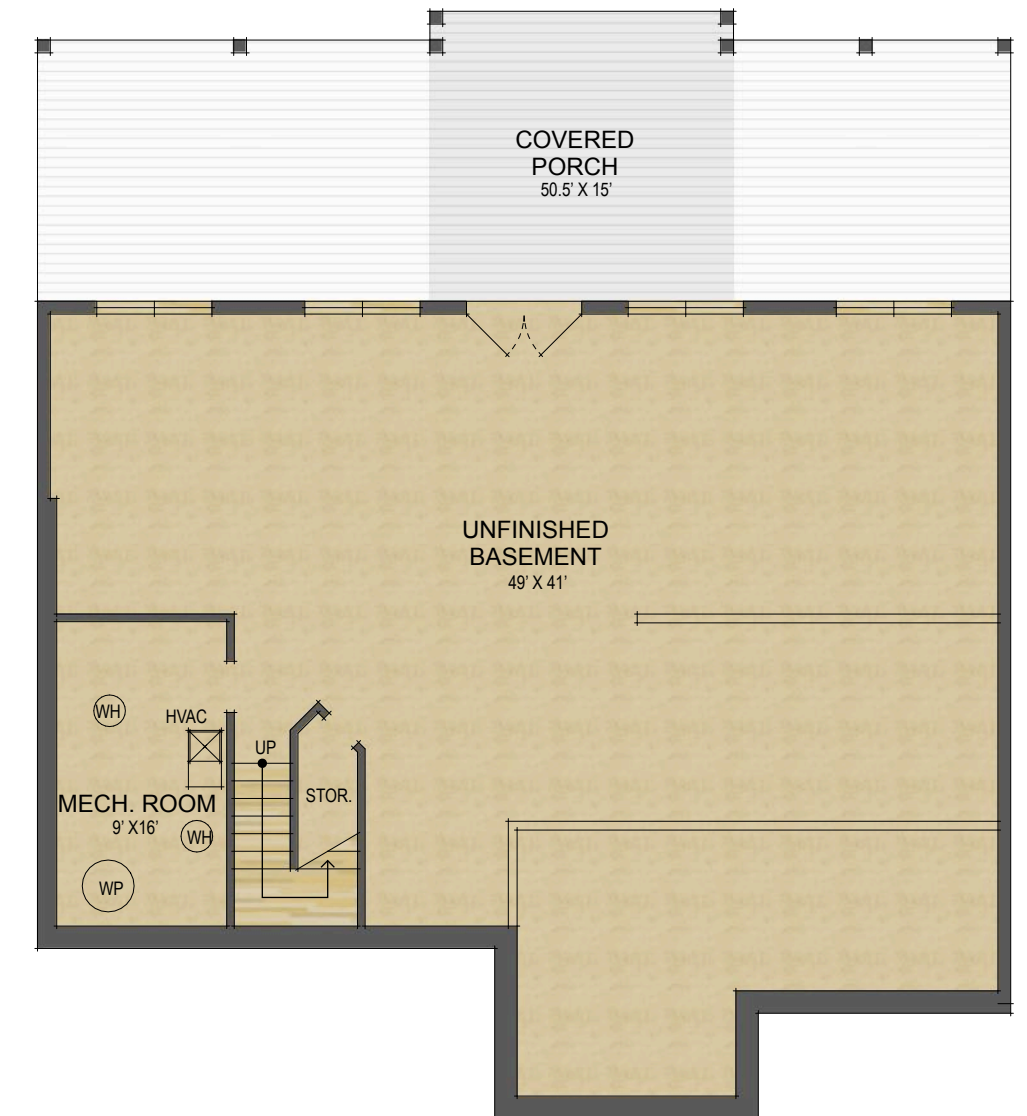
LOOKING GLASS REALTY

652 Big Hill Road  
Brevard, NC

UPPER LEVEL LIVING SPACE:	1,063 SQ. FT.
MAIN LEVEL LIVING SPACE:	1,891 SQ. FT.
<b>TOTAL HEATED LIVING SPACE:</b>	<b>2,954 SQ. FT.</b>
UPPER *BONUS & ATTIC SPACE:	448 SQ. FT.
2-CAR GARAGE:	643 SQ. FT.
COVERED FRONT PORCH:	159 SQ. FT.
COVERED LOWER PATIO:	254 SQ. FT.
SCREENED PORCH:	254 SQ. FT.
UNFINISHED BASEMENT:	1,842 SQ. FT.
TOTAL UNDER ROOF:	6,554 SQ. FT.
OPEN DECKS:	466 SQ. FT.



Upper Level Floor Plan



Lower Level Floor Plan



Main Level Floor Plan

- HEATED LIVING SPACE
- UNHEATED/UNFINISHED/\*BONUS SPACE
- COVERED PORCH
- UNCOVERED DECK/PATIO

NOTES:  
 \* - LIVING SPACE REQUIRES A MIN. OF 7'-0" CEILING HEIGHT (5'-0" BELOW A SLOPED CEILING, FINISHED SURFACES, HEATED SPACE, & DIRECT CONNECTION WITH OTHER LIVING SPACE. BONUS SPACE SHOWN MEETS SOME BUT NOT ALL OF THESE QUALIFICATIONS  
 1. MEASUREMENTS WERE OBTAINED VIA THE NORTH CAROLINA REAL ESTATE COMMISSION GUIDELINES.  
 2. DIMENSIONS ARE ROUNDED TO THE NEAREST 1/2 FOOT AND ARE APPROXIMATE.  
 3. INFORMATION WITHIN THESE DRAWINGS ARE INTENDED SOLELY FOR THE USE OF REALTY MARKETING. NOT FOR CONSTRUCTION.  
 4. FOR MORE INFORMATION REGARDING MEASUREMENTS, MARKETING FLOOR PLANS, OR REMODEL DESIGN & CONSULTING, CONTACT WES HOGAN AT:  
[FeaturedListingsWNC@gmail.com](mailto:FeaturedListingsWNC@gmail.com)