



# LOOKING GLASS REALTY

935 Utsonati Drive  
Brevard, NC

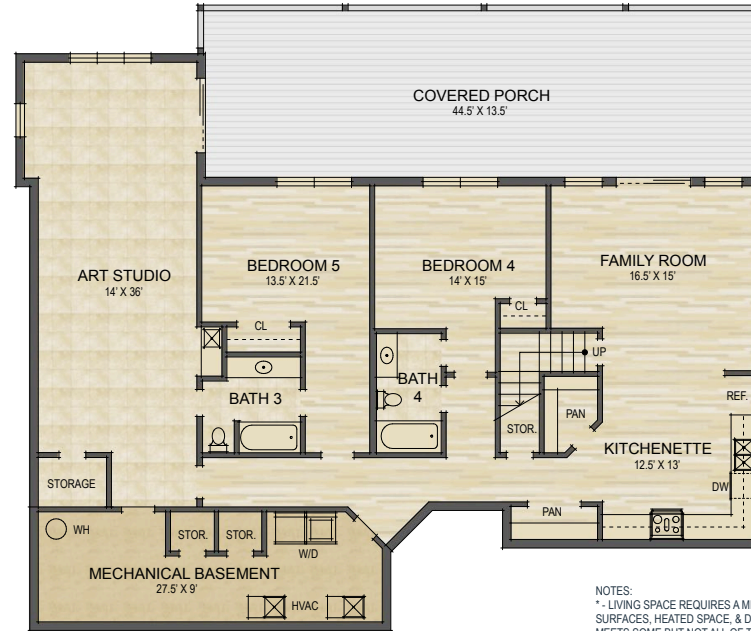
MAIN LEVEL LIVING SPACE:	2,128 SQ. FT.
BELOW GRADE LIVING SPACE:	1,805 SQ. FT.
<b>TOTAL HEATED LIVING SPACE:</b>	<b>3,933 SQ. FT.</b>

GARAGE:	719 SQ. FT.
UNFINISHED BASEMENT:	283 SQ. FT.
COVERED PORCH:	1,305 SQ. FT.
<b>TOTAL UNDER ROOF:</b>	<b>6,240 SQ. FT.</b>



Main Level Floor Plan

- HEATED LIVING SPACE
- UNHEATED/UNFINISHED/BONUS SPACE
- COVERED PORCH
- UNCOVERED DECK/PATIO



Lower Level Floor Plan

NOTES:  
 \* - LIVING SPACE REQUIRES A MIN. OF 7'-0" CEILING HEIGHT (5'-0") BELOW A SLOPED CEILING, FINISHED SURFACES, HEATED SPACE, & DIRECT CONNECTION WITH OTHER LIVING SPACE. BONUS SPACE SHOWN MEETS SOME BUT NOT ALL OF THESE QUALIFICATIONS  
 1. MEASUREMENTS WERE OBTAINED VIA THE NORTH CAROLINA REAL ESTATE COMMISSION GUIDELINES. MEETS SOME BUT NOT ALL OF THESE QUALIFICATIONS  
 2. DIMENSIONS ARE ROUNDED TO THE NEAREST 1/2 FOOT AND ARE APPROXIMATE.  
 3. INFORMATION WITHIN THESE DRAWINGS ARE INTENDED SOLELY FOR THE USE OF REALTY MARKETING. NOT FOR CONSTRUCTION.  
 4. FOR MORE INFORMATION REGARDING MEASUREMENTS, MARKETING FLOOR PLANS, OR REMODEL DESIGN & CONSULTING, CONTACT **WES HOGAN** AT:  
**FeaturedListingsWNC@gmail.com** OR **828.577.1915**



**Featured Listings**  
 Unique Services for Premier Real Estate