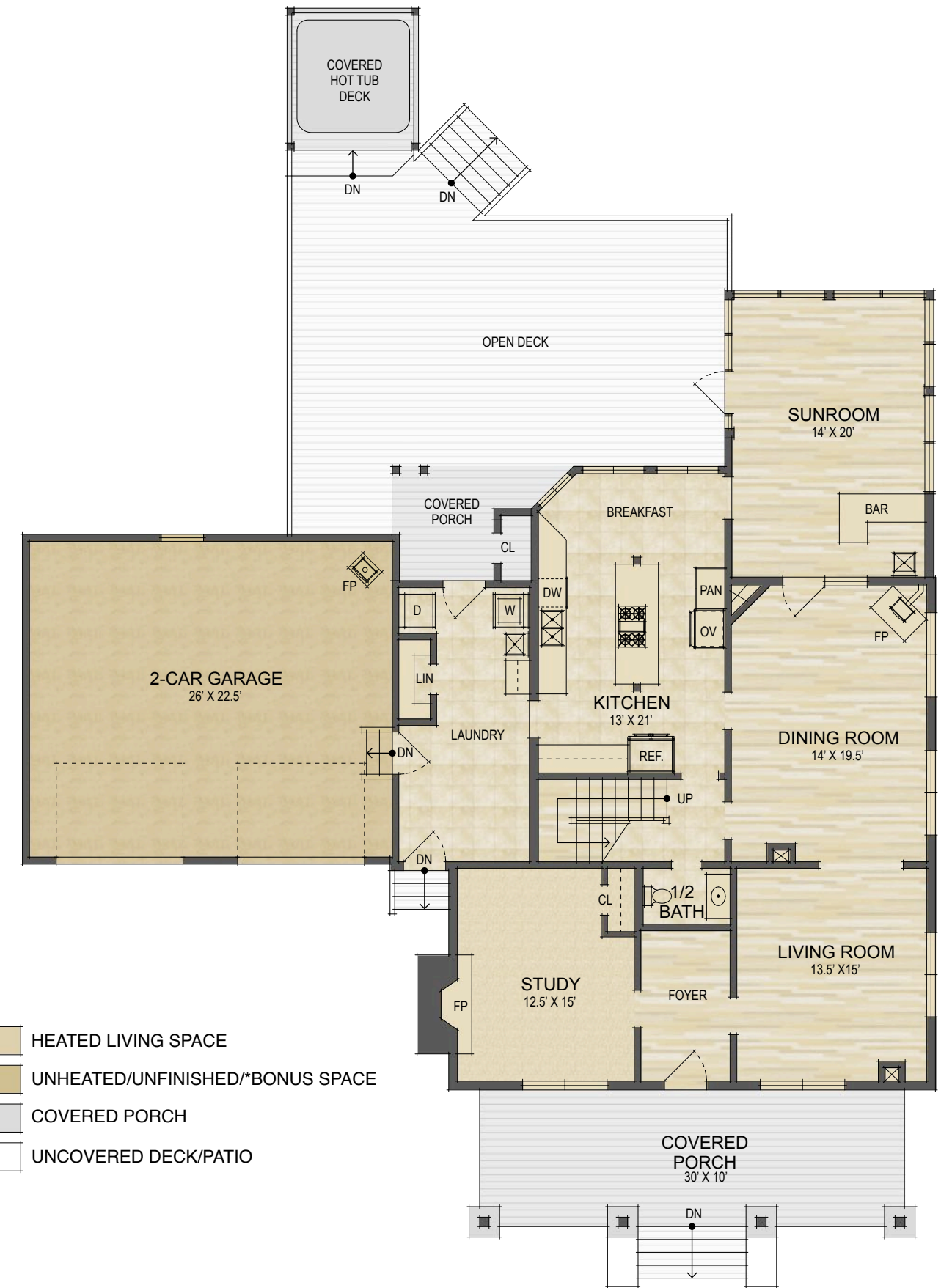


67 Willow Drive
Brevard, NC

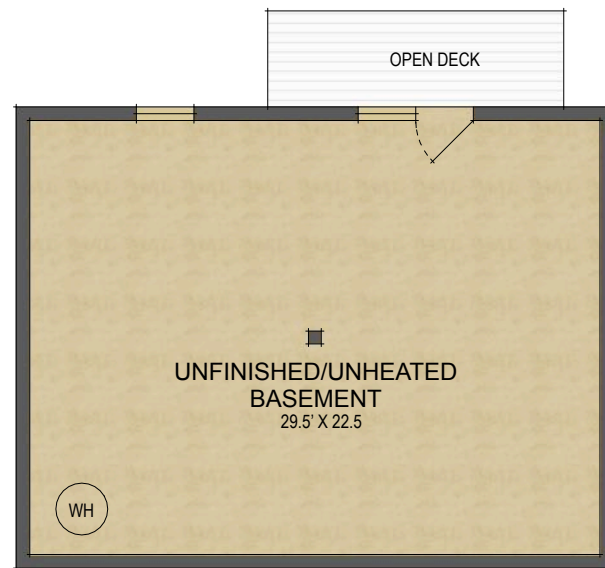
MAIN HOUSE:	
UPPER LEVEL LIVING SPACE:	1,345 SQ. FT.
MAIN LEVEL LIVING SPACE:	1,718 SQ. FT.
TOTAL HEATED LIVING SPACE:	3,063 SQ. FT.
GARAGE:	614 SQ. FT.
COVERED PORCH:	767 SQ. FT.
SUBTOTAL UNDER ROOF:	4,444 SQ. FT.
OPEN DECKS:	767 SQ. FT.
GUEST HOUSE:	
MAIN LEVEL HEATED SPACE:	764 SQ. FT.
UNHEATED/UNFINISHED BASEMENT:	747 SQ. FT.
SUBTOTAL UNDER ROOF:	1,511 SQ. FT.
TOTAL UNDER ROOF:	5,955 SQ. FT.



Upper Level Floor Plan



Main Level Floor Plan



Guest House Lower Level Floor Plan



Guest House Main Level Floor Plan

NOTES:
 * - LIVING SPACE REQUIRES A MIN. OF 7'-0" CEILING HEIGHT (5'-0") BELOW A SLOPED CEILING, FINISHED SURFACES, HEATED SPACE, & DIRECT CONNECTION WITH OTHER LIVING SPACE. BONUS SPACE SHOWN MEETS SOME BUT NOT ALL OF THESE QUALIFICATIONS
 1. MEASUREMENTS WERE OBTAINED VIA THE NORTH CAROLINA REAL ESTATE COMMISSION GUIDELINES.
 2. DIMENSIONS ARE ROUNDED TO THE NEAREST 1/2 FOOT AND ARE APPROXIMATE.
 3. INFORMATION WITHIN THESE DRAWINGS ARE INTENDED SOLELY FOR THE USE OF REALTY MARKETING. NOT FOR CONSTRUCTION.
 4. FOR MORE INFORMATION REGARDING MEASUREMENTS, MARKETING FLOOR PLANS, OR REMODEL DESIGN & CONSULTING, CONTACT WES HOGAN AT: FeaturedListingsWNC@gmail.com OR 828.577.191