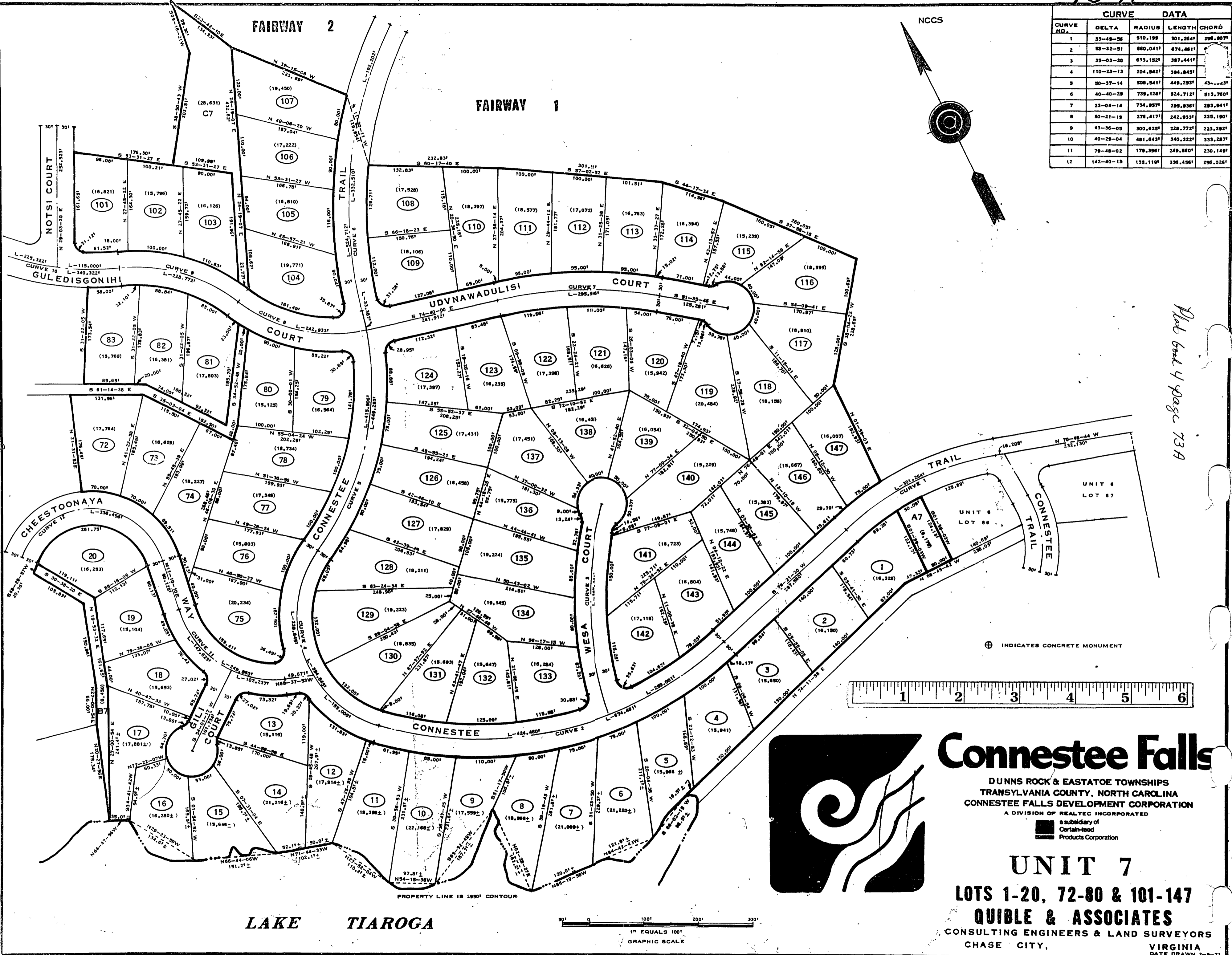
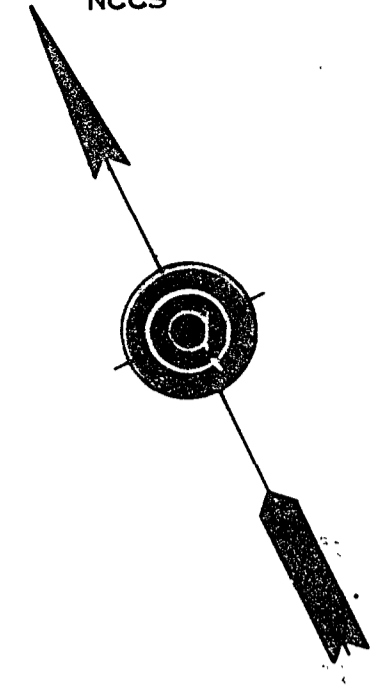


CURVE DATA				
CURVE NO.	DELTA	RADIUS	LENGTH	CHORD
1	33-49-36	510.199	301.284'	296.807'
2	33-32-31	660.041'	674.461'	
3	35-03-38	633.132'	387.441'	
4	110-23-13	204.842'	394.843'	
5	50-37-14	508.541'	449.293'	431.123'
6	40-40-29	739.128'	524.712'	513.760'
7	23-04-14	734.957'	299.936'	293.941'
8	50-21-19	276.417'	242.933'	235.190'
9	43-36-05	300.625'	228.772'	223.292'
10	40-29-04	481.643'	340.322'	333.287'
11	78-48-02	179.396'	249.860'	230.149'
12	142-40-13	139.110'	336.456'	296.026'



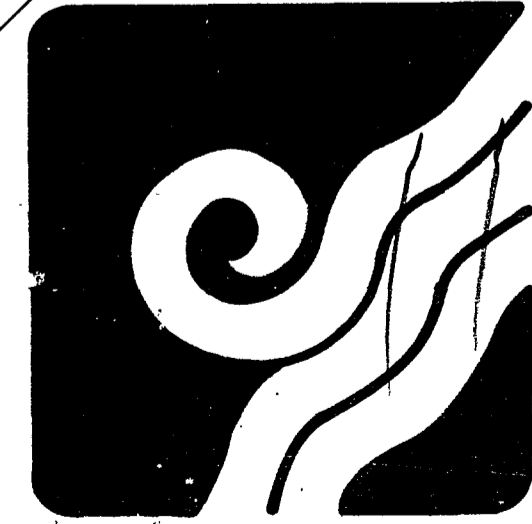
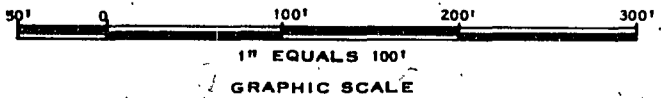
NCCS



Plot Book 4 page 73A

Book 4 pg 73A

⊕ INDICATES CONCRETE MONUMENT



Connestee Falls

DUNNS ROCK & EASTATOE TOWNSHIPS
 TRANSYLVANIA COUNTY, NORTH CAROLINA
 CONNESTEE FALLS DEVELOPMENT CORPORATION

A DIVISION OF REALTEC INCORPORATED
 a subsidiary of
 Certain-teed
 Products Corporation

UNIT 7
LOTS 1-20, 72-80 & 101-147
QUIBLE & ASSOCIATES
 CONSULTING ENGINEERS & LAND SURVEYORS
 CHASE CITY, VIRGINIA
 DATE DRAWN 2-9-72

LAKE TIAROGA

PROPERTY LINE IS 1990' CONTOUR