

# LAKE TIAROGA

NCCS GRID

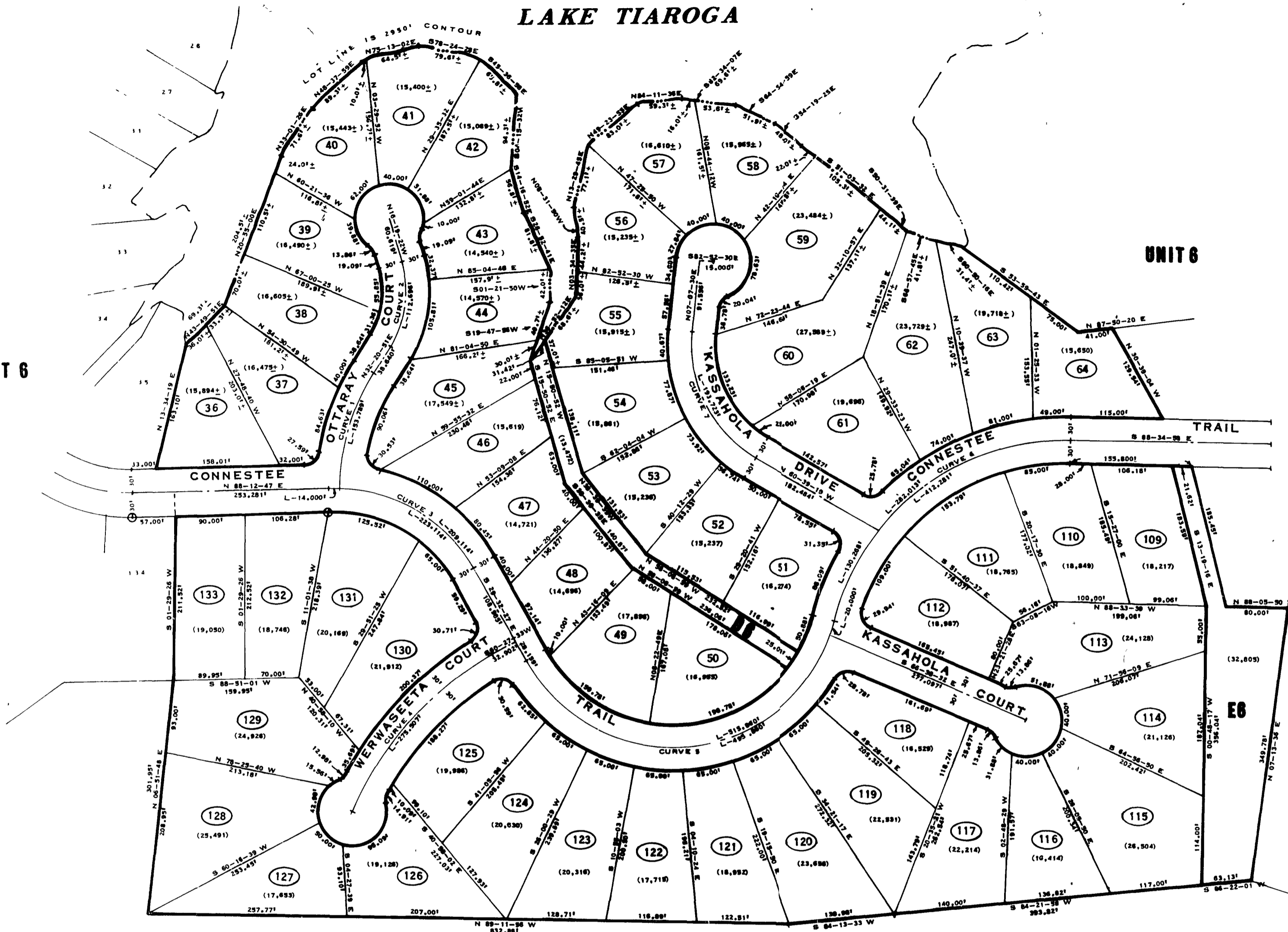


UNIT 6

UNIT 6

**470**  
**QB**

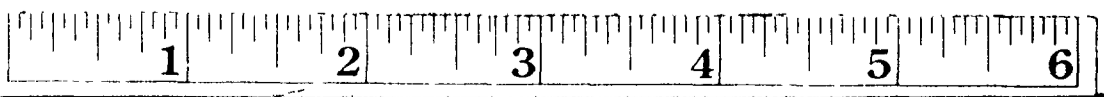
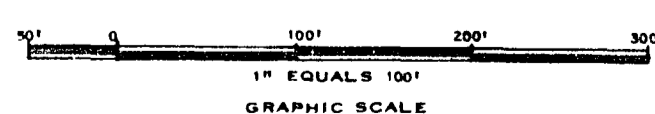
*Pls see book 4 page 708*



⊕ - INDICATES CONCRETE MONUMENT

*PART 3 of 4*

CURVE NO.	CURVE DATA			
	DELTA	RADIUS	LENGTH	CHORD
31	39.47	78.288'	153.789'	151.840'
34	30.14	112.667'	112.696'	109.138'
35	14.46	205.370'	223.114'	212.303'
36	18-11	134.823'	275.907'	270.922'
37	20-16	216.789'	515.860'	402.483'
38	17-45	105.605'	412.281'	181.720'
39	4-49	143.757'	193.713'	182.113'



## Connestee Falls

DUNN'S ROCK & EASTATOE TOWNSHIPS  
TRANSYLVANIA COUNTY, NORTH CAROLINA  
CONNESTEE FALLS DEVELOPMENT CORPORATION

A DIVISION OF REALTEC INCORPORATED  
a subsidiary of  
Certain-teed  
Products Corporation

### UNIT 6

LOTS 36 - 64 & 109 - 133

**QUIBLE & ASSOCIATES**  
CONSULTING ENGINEERS & LAND SURVEYORS  
CHASE CITY, VIRGINIA

DATE DRAWN - JAN. 13, 1972

SHEET 3 OF 4