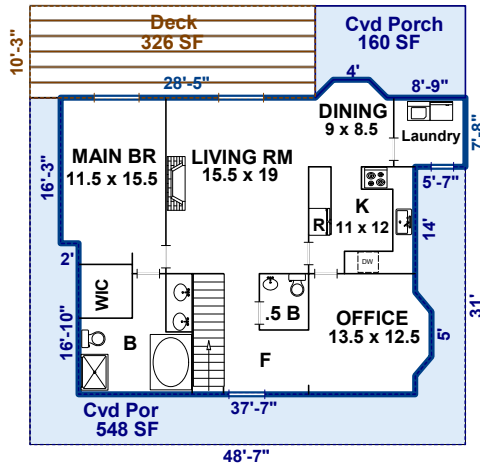


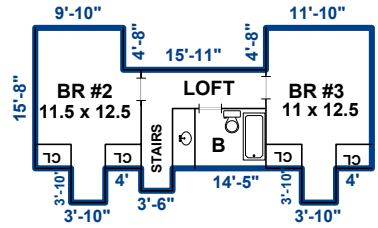
HEATED LIVING AREA

MAIN LEVEL = 1344 SF
 SECOND LEVEL = 553 SF
TOTAL = 1897 SF

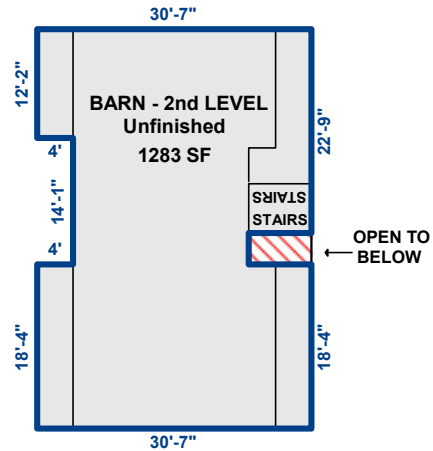
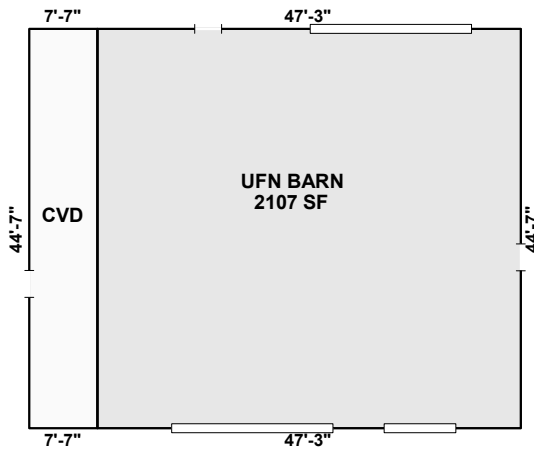
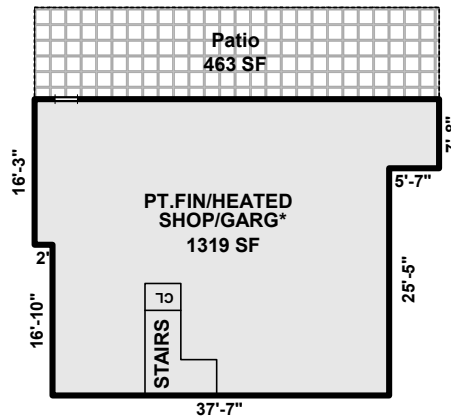
MAIN LEVEL
1344 SF



SECOND LEVEL
553 SF



No portion of the HLA that has a ceiling height of less than 5' may be included in the total finished square footage calculations.



* Below Grade

Interior sketches are for illustration purposes only.
 Prepared by Diane L. Jetton, HMS (828)553-0171; dlj@pobox.com