

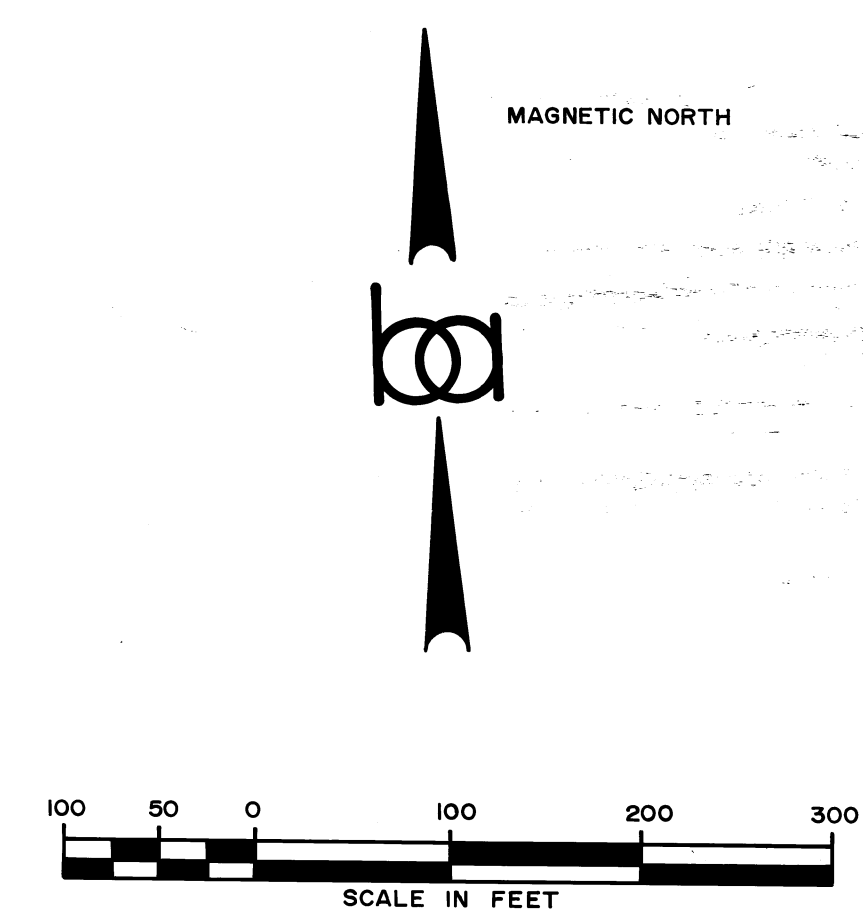
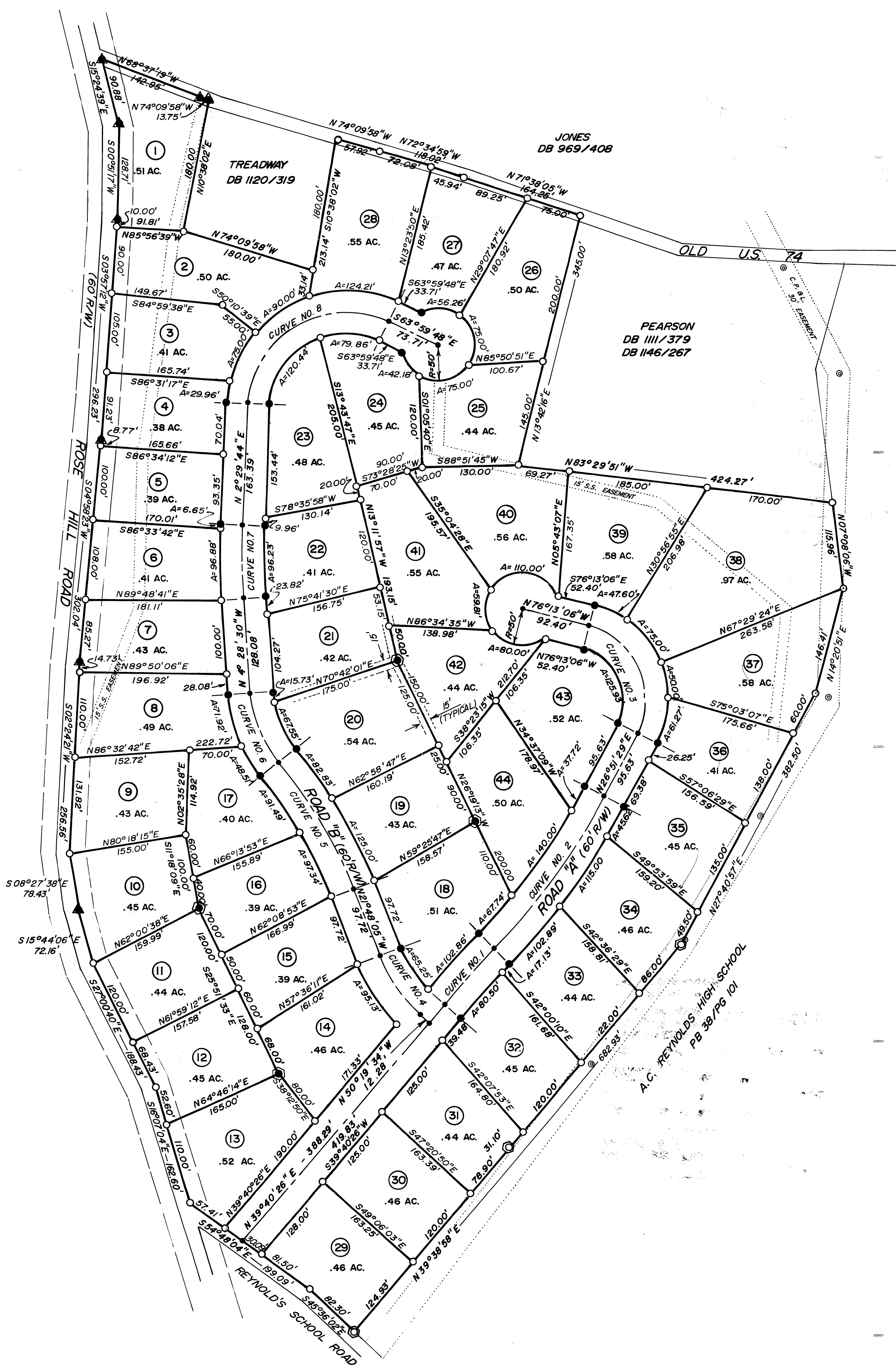
42/109

CENTER-LINE CURVE DATA

<b>CURVE NO. 1</b> Δ = 4° 25' 00" R = 1296.57' T = 50.00' ARC = 99.95' CHD = 99.92'	<b>CURVE NO. 5</b> Δ = 18° 08' 54" R = 626.13' T = 100.00' ARC = 198.32' CHD = 197.50'
<b>CURVE NO. 2</b> Δ = 17° 13' 57" R = 846.13' T = 128.21' ARC = 254.48' CHD = 253.53'	<b>CURVE NO. 6</b> Δ = 35° 28' 29" R = 164.51' T = 52.62' ARC = 101.86' CHD = 100.24'
<b>CURVE NO. 3</b> Δ = 103° 04' 34" R = 100.00' T = 125.89' ARC = 179.90' CHD = 156.60'	<b>CURVE NO. 7</b> Δ = 6° 58' 14" R = 820.95' T = 50.00' ARC = 99.88' CHD = 99.81'
<b>CURVE NO. 4</b> Δ = 28° 31' 29" R = 196.70' T = 50.00' ARC = 97.93' CHD = 96.92'	<b>CURVE NO. 8</b> Δ = 113° 30' 28" R = 131.11' T = 200.00' ARC = 259.73' CHD = 219.29'

NOTE: ALL SIDE AND REAR LOT LINES SHALL HAVE RESERVED A 15' UTILITY EASEMENT IN ADDITION TO THOSE SHOWN.

- LEGEND:**
- ⊙ = CONCRETE MONUMENT FOUND
  - = IRON PIN FOUND
  - ▲ = R/R SPIKE FOUND
  - ⊙ = ALUMINUM MONUMENT SET
  - = IRON PIN SET
  - = UNMARKED POINT
- DEED REFERENCE: BK 1146 / PG 267
- ⊙ = POWER POLE



I, ERNEST M. SUTTON, JR., CERTIFY THAT UNDER MY DIRECTION AND SUPERVISION THIS MAP WAS DRAWN FROM AN ACTUAL FIELD LAND SURVEY; THAT THE ERROR OF CLOSURE OF THE CONTROL SURVEY AS CALCULATED BY LATITUDES AND DEPARTURES DOES NOT EXCEED 1:10,000; THAT THIS MAP WAS PREPARED IN ACCORDANCE WITH GS 47 30 AS AMENDED.

WITNESS MY HAND AND SEAL THIS 8<sup>th</sup> DAY OF JULY, 1977.

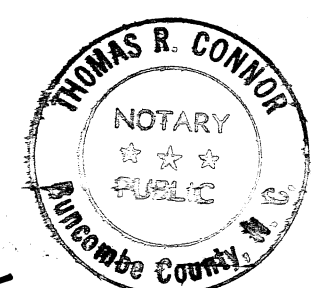


STATE OF NORTH CAROLINA  
COUNTY OF BUNCOMBE  
I, THOMAS R. CONNOR, A NOTARY PUBLIC OF SAID STATE AND COUNTY, DO HEREBY CERTIFY THAT ERNEST M. SUTTON, JR. PERSONALLY APPEARED BEFORE ME THIS DAY AND ACKNOWLEDGED THE DUE EXECUTION OF THE FOREGOING INSTRUMENT.

WITNESS MY HAND AND NOTARIAL SEAL THIS THE 8<sup>th</sup> DAY OF JULY, 1977.

*Thomas R. Connor*  
NOTARY PUBLIC

MY COMMISSION EXPIRES FEBRUARY 2, 1981



4414 OF NORTH CAROLINA  
COUNTY OF BUNCOMBE  
The foregoing certificate of *Thomas R. Connor* a Notary Public of the State and County designated is certified to be correct.  
This 12 day of July, 1977.  
WILLIAM E. BIGGS  
Register of Deeds, Buncombe County  
By: *Shelby F. Wainwright* Deputy  
Filed for registration on the 12 day of July, 1977 at 10:10 AM.  
WILLIAM E. BIGGS  
Register of Deeds, Buncombe County  
By: *Shelby F. Wainwright* Deputy

