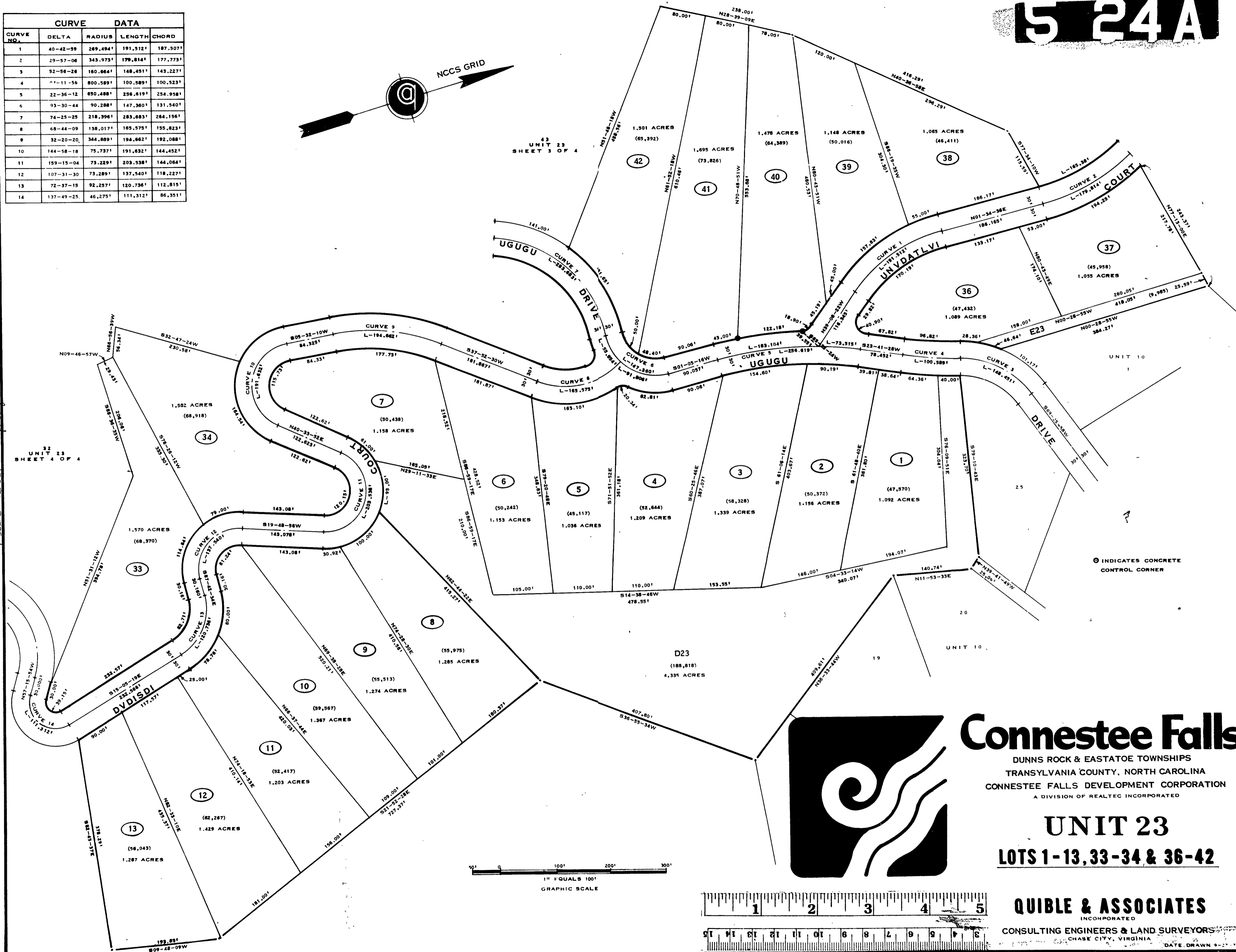
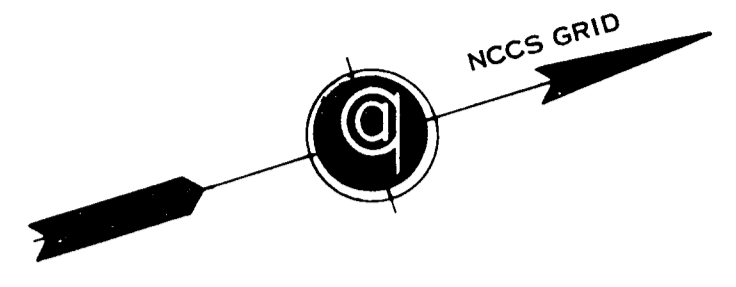


CURVE DATA				
CURVE NO.	DELTA	RADIUS	LENGTH	CHORD
1	40-42-59	269,494'	191,512'	187,507'
2	29-57-06	343,973'	179,814'	177,773'
3	52-56-28	160,664'	148,451'	143,227'
4	11-11-56	800,589'	100,589'	100,523'
5	22-36-12	650,488'	256,619'	254,958'
6	93-30-44	90,288'	147,360'	131,540'
7	74-25-25	218,396'	283,683'	264,156'
8	68-44-09	138,017'	165,575'	155,823'
9	32-20-20	344,889'	194,662'	192,088'
10	144-58-18	75,737'	191,632'	144,452'
11	159-15-04	73,229'	203,538'	144,064'
12	107-31-30	73,289'	137,540'	118,227'
13	72-37-15	92,257'	120,736'	112,815'
14	137-49-25	46,275'	111,312'	86,351'

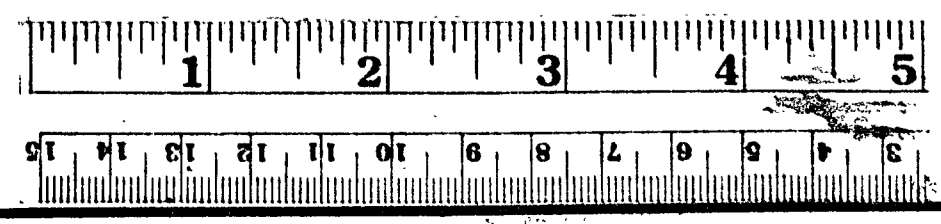
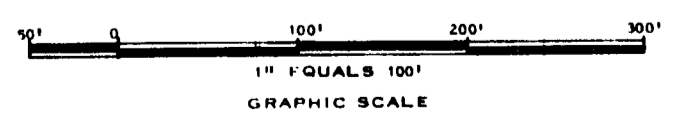


Plat Book 5 page 24-A

⊙ INDICATES CONCRETE CONTROL CORNER

Connestee Falls
 DUNNS ROCK & EASTATOE TOWNSHIPS
 TRANSYLVANIA COUNTY, NORTH CAROLINA
 CONNESTEE FALLS DEVELOPMENT CORPORATION
 A DIVISION OF REALTEC INCORPORATED

UNIT 23
LOTS 1-13, 33-34 & 36-42



QUIBLE & ASSOCIATES
 INCORPORATED
 CONSULTING ENGINEERS & LAND SURVEYORS
 CHASE CITY, VIRGINIA