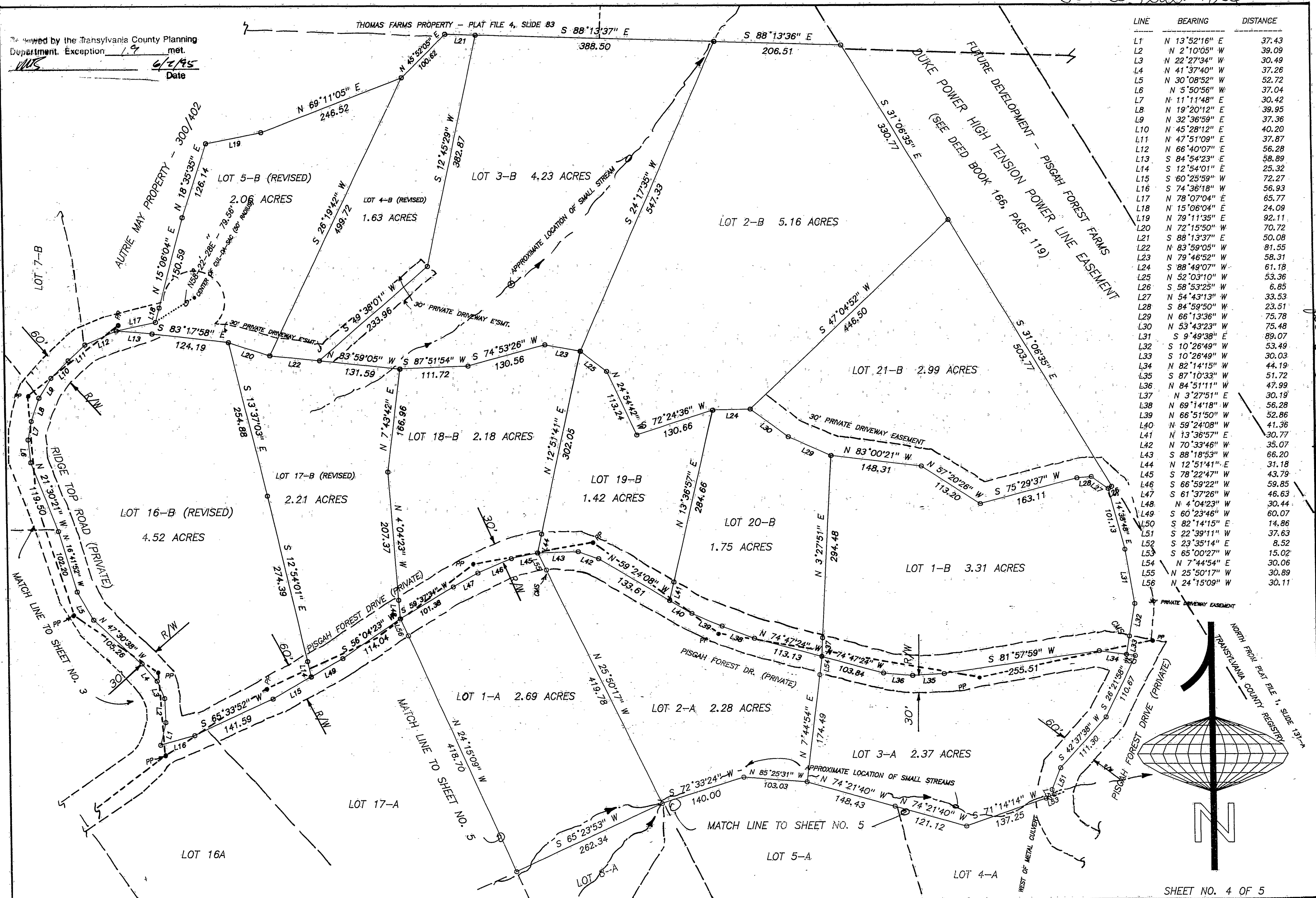
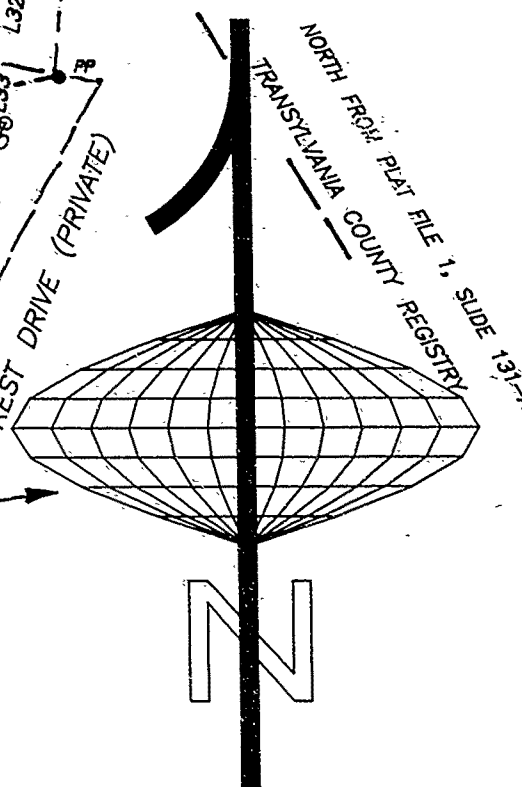


File slide 126

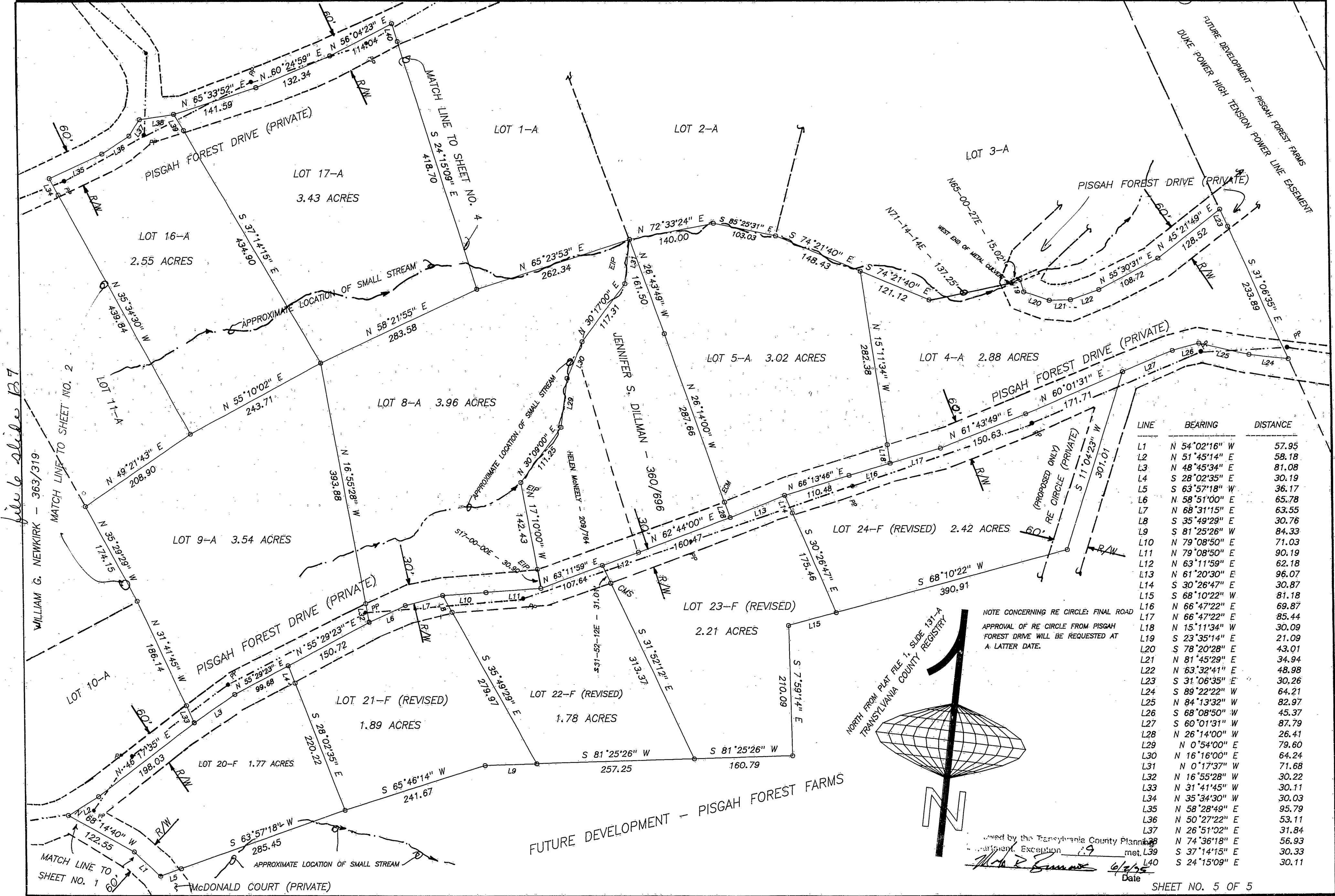
Approved by the Transylvania County Planning Department. Exception 1.9 met. Date 6/2/95



LINE	BEARING	DISTANCE
L1	N 13°52'16" E	37.43
L2	N 2°10'05" W	39.09
L3	N 22°27'34" W	30.49
L4	N 41°37'40" W	37.26
L5	N 30°08'52" W	52.72
L6	N 5°50'56" W	37.04
L7	N 11°11'48" E	30.42
L8	N 19°20'12" E	39.95
L9	N 32°36'59" E	37.36
L10	N 45°28'12" E	40.20
L11	N 47°51'09" E	37.87
L12	N 66°40'07" E	56.28
L13	S 84°54'23" E	58.89
L14	S 12°54'01" E	25.32
L15	S 60°25'59" W	72.27
L16	S 74°36'18" W	56.93
L17	N 78°07'04" E	65.77
L18	N 15°06'04" E	24.09
L19	N 79°11'35" E	92.11
L20	N 72°15'50" W	70.72
L21	S 88°13'37" E	50.08
L22	N 83°59'05" W	81.55
L23	N 79°46'52" W	58.31
L24	S 88°49'07" W	61.18
L25	N 52°03'10" W	53.36
L26	S 58°53'25" W	6.85
L27	N 54°43'13" W	33.53
L28	S 84°59'50" W	23.51
L29	N 66°13'36" W	75.78
L30	N 53°43'23" W	75.48
L31	S 9°49'38" E	89.07
L32	S 10°26'49" W	53.49
L33	S 10°26'49" W	30.03
L34	N 82°14'15" W	44.19
L35	S 87°10'33" W	51.72
L36	N 84°51'11" W	47.99
L37	N 3°27'51" E	30.19
L38	N 69°14'18" W	56.28
L39	N 66°51'50" W	52.86
L40	N 59°24'08" W	41.36
L41	N 13°36'57" E	30.77
L42	N 70°33'46" W	35.07
L43	S 88°18'53" W	66.20
L44	N 12°51'41" E	31.18
L45	S 78°22'47" W	43.79
L46	S 66°59'22" W	59.85
L47	S 61°37'26" W	46.63
L48	N 4°04'23" W	30.44
L49	S 60°23'46" E	60.07
L50	S 82°14'15" E	14.86
L51	S 22°39'11" W	37.63
L52	S 23°35'14" E	8.52
L53	S 65°00'27" W	15.02
L54	N 7°44'54" E	30.06
L55	N 25°50'17" W	30.89
L56	N 24°15'09" W	30.11



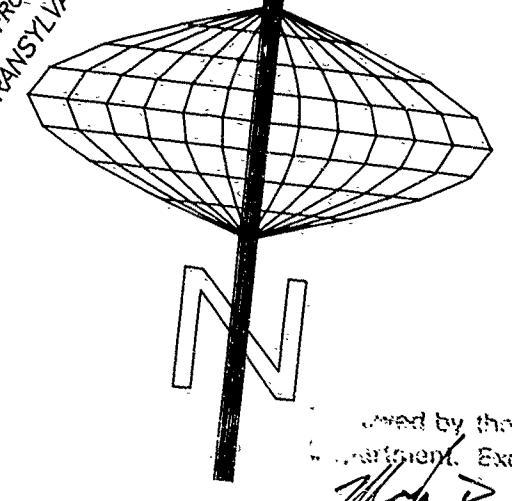
File slide 126



LINE	BEARING	DISTANCE
L1	N 54°02'16" W	57.95
L2	N 51°45'14" E	58.18
L3	N 48°45'34" E	81.08
L4	S 28°02'35" E	30.19
L5	S 63°57'18" W	36.17
L6	N 58°51'00" E	65.78
L7	N 68°31'15" E	63.55
L8	S 35°49'29" E	30.76
L9	S 81°25'26" W	84.33
L10	N 79°08'50" E	71.03
L11	N 79°08'50" E	90.19
L12	N 63°11'59" E	62.18
L13	N 61°20'30" E	96.07
L14	S 30°26'47" E	30.87
L15	S 68°10'22" W	81.18
L16	N 66°47'22" E	69.87
L17	N 66°47'22" E	85.44
L18	N 15°11'34" W	30.09
L19	S 23°35'14" E	21.09
L20	S 78°20'28" E	43.01
L21	N 81°45'29" E	34.94
L22	N 63°32'41" E	48.98
L23	S 31°06'35" E	30.26
L24	S 89°22'22" W	64.21
L25	N 84°13'32" W	82.97
L26	S 68°08'50" W	45.37
L27	S 60°01'31" W	87.79
L28	N 26°14'00" W	26.41
L29	N 0°54'00" E	79.60
L30	N 16°16'00" E	64.24
L31	N 0°17'37" W	71.68
L32	N 16°55'28" W	30.22
L33	N 31°41'45" W	30.11
L34	N 35°34'30" W	30.03
L35	N 58°28'49" E	95.79
L36	N 50°27'22" E	53.11
L37	N 26°51'02" E	31.84
L38	N 74°36'18" E	56.93
L39	S 37°14'15" E	30.33
L40	S 24°15'09" E	30.11

NOTE CONCERNING RE CIRCLE: FINAL ROAD APPROVAL OF RE CIRCLE FROM PISGAH FOREST DRIVE WILL BE REQUESTED AT A LATTER DATE.

NORTH FROM PLAT FILE 1, SLIDE 131-A
TRANSYLVANIA COUNTY REGISTRY



Drawn by the Transylvania County Planning Commission
 Exception 19 met L39
 Date 6/2/95