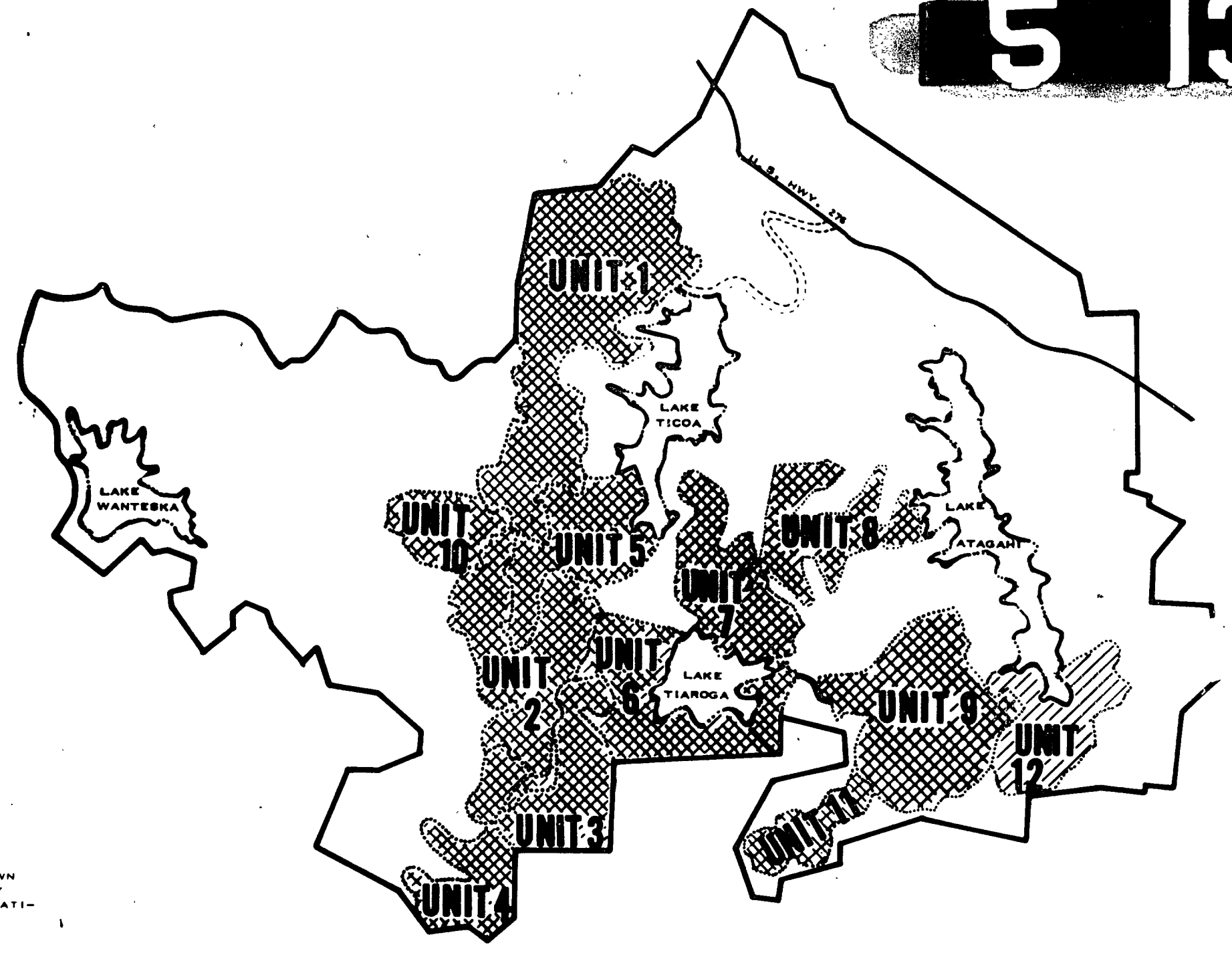


VICINITY MAP
SCALE IN MILES



LOCATION MAP
1 INCH EQUALS 2,000 FEET

I, **F. RICHARD QUILBE**, CERTIFY THAT THIS MAP WAS DRAWN UNDER MY SUPERVISION FROM AN ACTUAL SURVEY MADE UNDER MY SUPERVISION, THAT THE ERROR OF CLOSURE AS CALCULATED BY LATITUDES AND DEPARTURES IS LESS THAN 1:9000, AND THAT THIS MAP WAS PREPARED IN ACCORDANCE WITH G. S. 47-30 AS AMENDED.

WITNESS MY HAND AND SEAL THIS 31st DAY OF July A. D., 1972.
F. Richard Quible
REGISTERED LAND SURVEYOR
REGISTRATION NO. L-1157

I, Sandra S. Poole, A NOTARY PUBLIC IN AND FOR MECKLENBURG COUNTY, VIRGINIA DO HEREBY CERTIFY THAT **F. RICHARD QUILBE** PERSONALLY APPEARED BEFORE ME THIS DAY AND BEING DULY SWORN, ACKNOWLEDGES THAT THE FOREGOING CERTIFICATE WAS EXECUTED BY HIM.
WITNESS MY HAND AND SEAL THIS 31st DAY OF July A. D., 1972.
Sandra S. Poole
NOTARY PUBLIC
MY COMMISSION EXPIRES 7-23-73

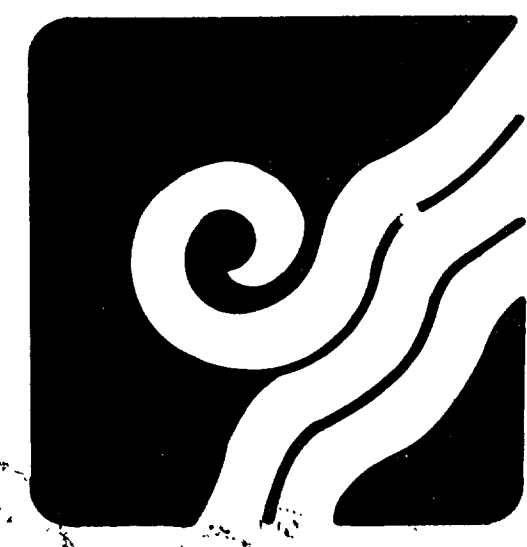
STATE OF NORTH CAROLINA
COUNTY OF TRANSYLVANIA
THE FOREGOING CERTIFICATES OF F. Richard Quible P.E. AND REGISTERED LAND SURVEYOR, Irving C. Hoffman P.E., AND Sandra S. Poole and Ann D. Swargis NOTARIES PUBLIC ARE CERTIFIED TO BE CORRECT, THIS INSTRUMENT WAS PRESENTED FOR REGISTRATION AND RECORDED IN THIS OFFICE IN PLAT BOOK 5, PAGE 13-13C, THIS 14th DAY OF Sept, AT 11:30 O'CLOCK A. M., 1972.
Irving C. Hoffman
REGISTER OF DEEDS

NOTES
CONNESTEE FALLS DEVELOPMENT CORPORATION RESERVES RIGHTS OF WAY AND EASEMENTS FOR WATER, GAS, SEWER, AND DRAINAGE PIPES AND FOR POLES AND OVERHEAD AND UNDERGROUND WIRES AND CONDUITS FOR ELECTRIC AND TELEPHONE SERVICES, TOGETHER WITH ANY AND ALL APPURTENANCES APPERTAINING THERETO, ON OVER, AND ACROSS EACH OF THE LOTS SHOWN HEREON, SAID EASEMENTS TO BE STRIPS OF LAND 5 FEET IN WIDTH CONTIGUOUS TO THE SIDE AND REAR LINES OF EACH LOT.
CONNESTEE FALLS DEVELOPMENT CORPORATION FURTHER RESERVES THE RIGHT TO SUBSEQUENTLY GRANT RIGHTS OF WAY AND EASEMENTS OVER THE ABOVE DESCRIBED STRIPS FOR THE ABOVE STATED PURPOSES TO ANY PUBLIC AGENCIES OR UTILITY FIRMS OR TO GRANT ITS RIGHTS IN SUCH EASEMENTS AND RIGHTS OF WAY TO A GROUP COMPOSED OF SUBSEQUENT OWNERS OF THE LOTS SHOWN HEREON.

THE LANDS DEPICTED AND SHOWN ON THIS PLAT ARE SUBJECT TO THE PROVISIONS OF THE DECLARATION OF RESTRICTIVE COVENANTS FOR CONNESTEE FALLS RECORDED WITH THE REGISTER OF DEEDS OF TRANSYLVANIA COUNTY OF NORTH CAROLINA ON THE 4TH DAY OF JUNE 1971, IN THE DEED BOOK 189, PAGE 443, ET. SEQ., AS AMENDED AND SUPPLEMENTAL DECLARATION OF RESTRICTIVE COVENANTS FOR UNIT 12 RECORDED IN THE OFFICE OF THE REGISTER OF DEEDS OF TRANSYLVANIA COUNTY OF NORTH CAROLINA IN DEED BOOK 196 PAGE 547.
ALL BEARINGS ARE BASED ON THE NORTH CAROLINA COORDINATE SYSTEM.
CURVES AT PROPERTY LINE INTERSECTIONS HAVE A RADIUS OF 20,000' AND ARC LENGTH OF 31,424' UNLESS OTHERWISE NOTED.
LOT DIMENSIONS SHOWN ON CURVES ARE ARC LENGTH.
IRON RODS AT ALL CORNERS UNLESS OTHERWISE NOTED.
CUL-DE-SACS HAVE A RADIUS OF 45,000' UNLESS OTHERWISE NOTED.
ALL FIGURES IN PARENTHESIS () DENOTE LOT SQUARE FOOTAGE.

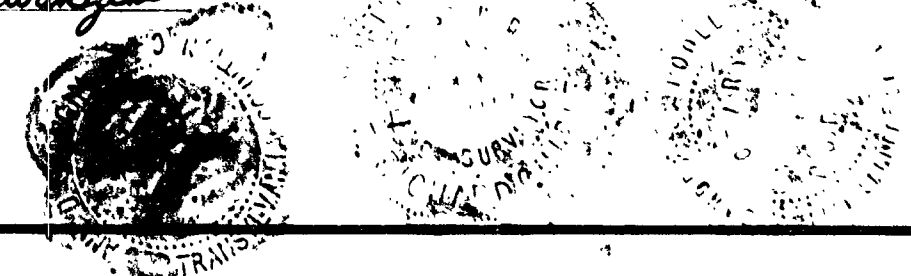
I, **IRVING C. HOFFMAN**, CERTIFY THAT UNDER MY DIRECTION THE LOTS SHOWN HEREON HAVE BEEN STAKED AS COMPUTED TO WITHIN AN ACCURACY OF 1:4000.
Irving C. Hoffman
PROFESSIONAL ENGINEER
N. C. REGISTRATION NO. 4526

I, Ann D. Swargis, A NOTARY PUBLIC IN AND FOR Transylvania County DO HEREBY CERTIFY THAT **IRVING C. HOFFMAN** PERSONALLY APPEARED BEFORE ME THIS DAY AND BEING DULY SWORN, ACKNOWLEDGES THAT THE FOREGOING CERTIFICATE WAS EXECUTED BY HIM.
WITNESS MY HAND AND SEAL THIS 31st DAY OF July A. D., 1972.
Ann D. Swargis
NOTARY PUBLIC
MY COMMISSION EXPIRES 6-13-75



Connestee Falls
DUNNS ROCK & EASTATOE TOWNSHIPS
TRANSYLVANIA COUNTY, NORTH CAROLINA
CONNESTEE FALLS DEVELOPMENT CORPORATION
A DIVISION OF REALTEC INCORPORATED

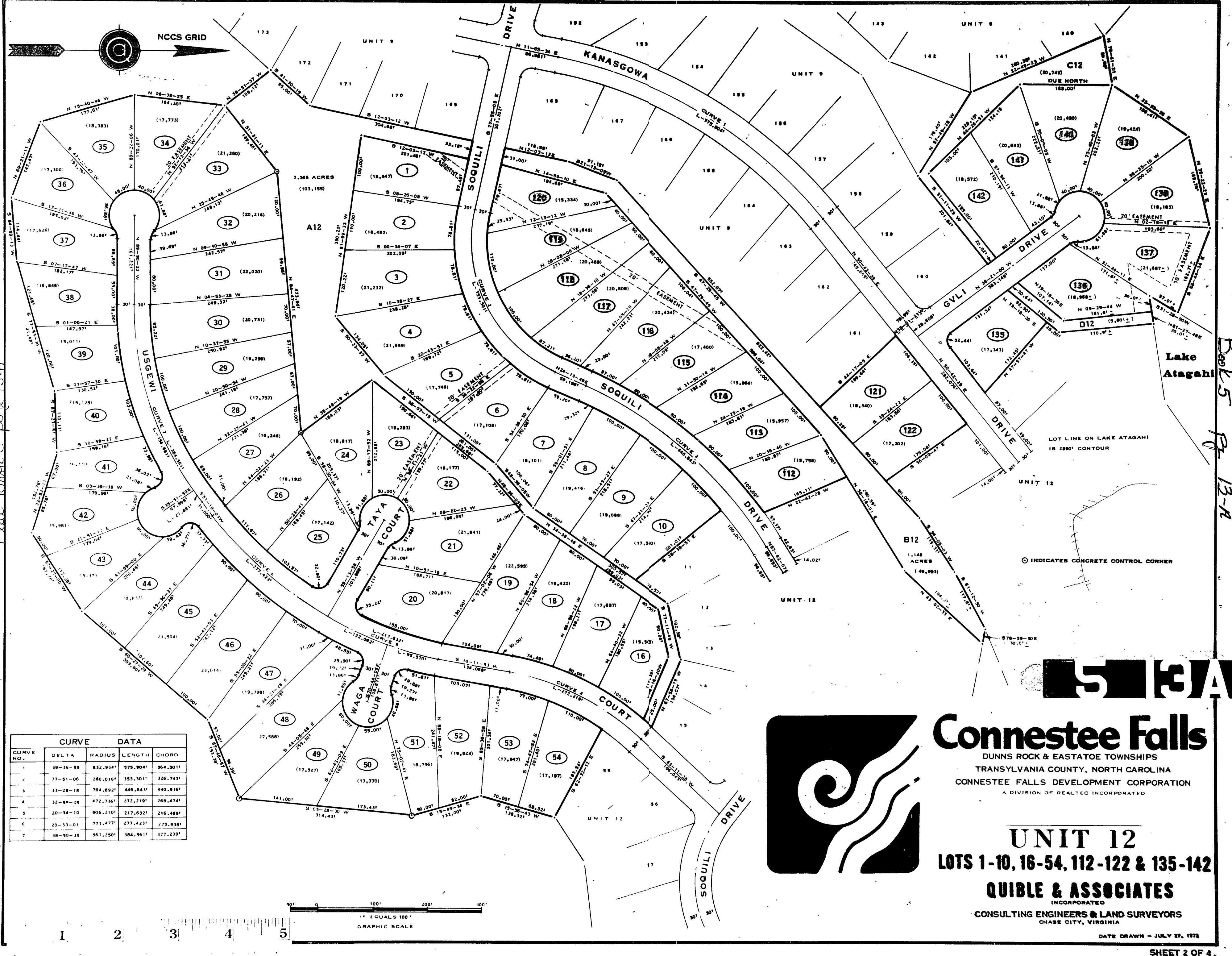
UNIT 12
LOTS 1 THRU 142
QUIBLE & ASSOCIATES
INCORPORATED
CONSULTING ENGINEERS & LAND SURVEYORS
CHASE CITY, VIRGINIA



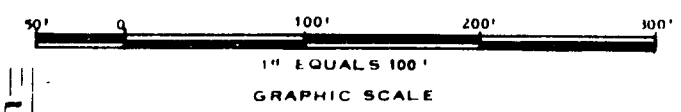
Plat Book 5 page 13

Plot Book page 13-A

Plot Book page 13-A



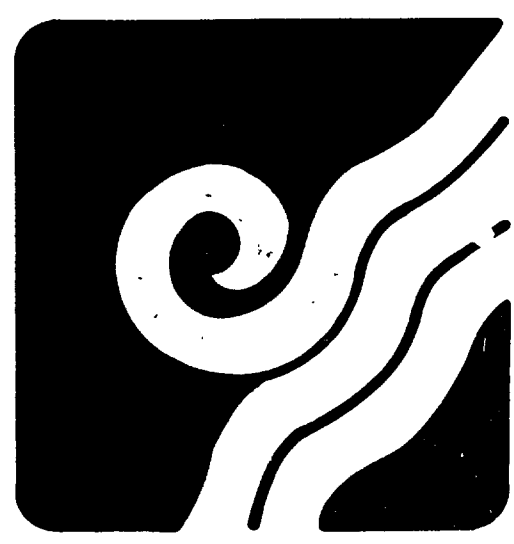
CURVE NO.	DELTA	RADIUS	LENGTH	CHORD
1	39-36-55	832.934'	575.904'	564.901'
2	77-51-06	260.016'	353.301'	326.743'
3	33-28-18	764.892'	446.843'	440.516'
4	32-59-15	472.736'	272.219'	268.474'
5	20-34-10	606.210'	217.632'	216.469'
6	20-33-01	773.477'	277.423'	275.938'
7	38-50-35	567.250'	384.561'	377.239'



⊙ INDICATES CONCRETE CONTROL CORNER



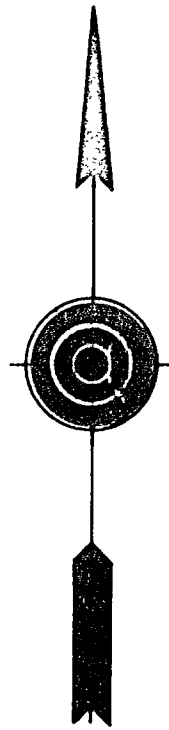
Connestee Falls
 DUNNS ROCK & EASTATOE TOWNSHIPS
 TRANSYLVANIA COUNTY, NORTH CAROLINA
 CONNESTEE FALLS DEVELOPMENT CORPORATION
 A DIVISION OF REALTEC INCORPORATED



UNIT 12
 LOTS 1-10, 16-54, 112-122 & 135-142
QUIBLE & ASSOCIATES
 INCORPORATED
 CONSULTING ENGINEERS & LAND SURVEYORS
 CHASE CITY, VIRGINIA

DATE DRAWN - JULY 27, 1978

NCCS GRID



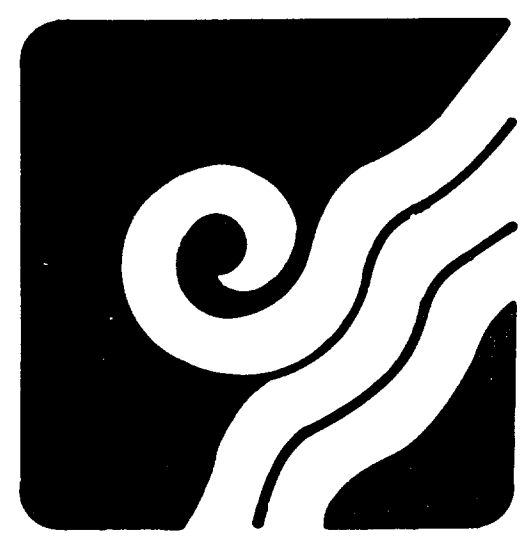
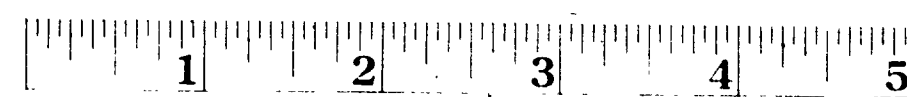
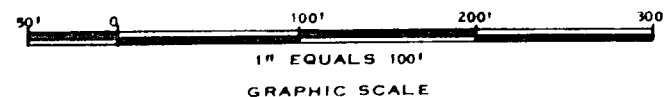
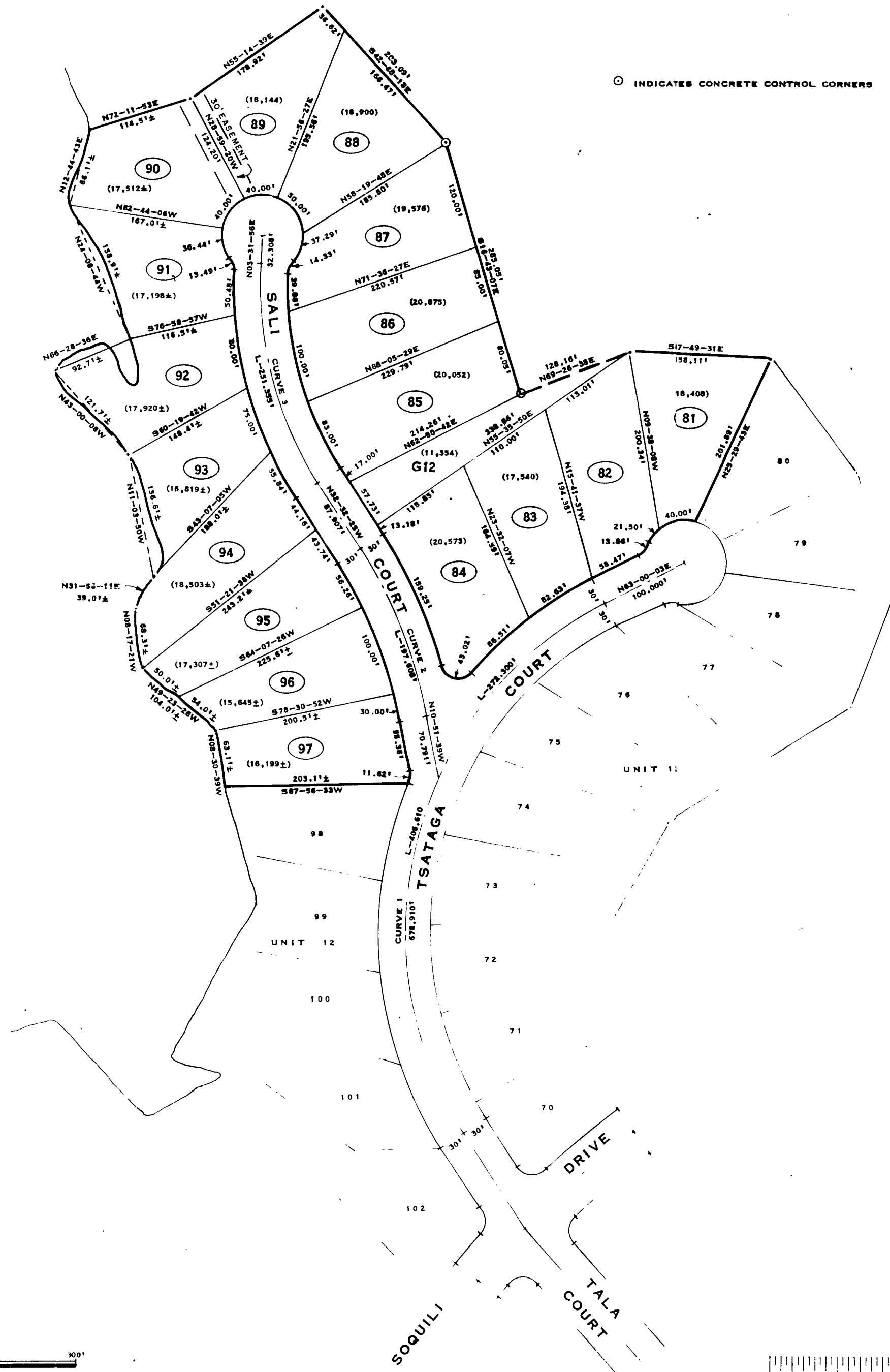
⊙ INDICATES CONCRETE CONTROL CORNERS

CURVE DATA				
CURVE NO.	DELTA	RADIUS	LENGTH	CHORD
1	95-59-44	405.214'	678.910'	602.244'
2	21-40-46	522.251'	197.008'	196.431'
3	56-04-21	399.259'	251.355'	247.224'

Plat Book 5 page 13-B

Lake Atagahi

LOT LINE ON LAKE ATAGAH
IS 2890' CONTOUR



Connestee Falls

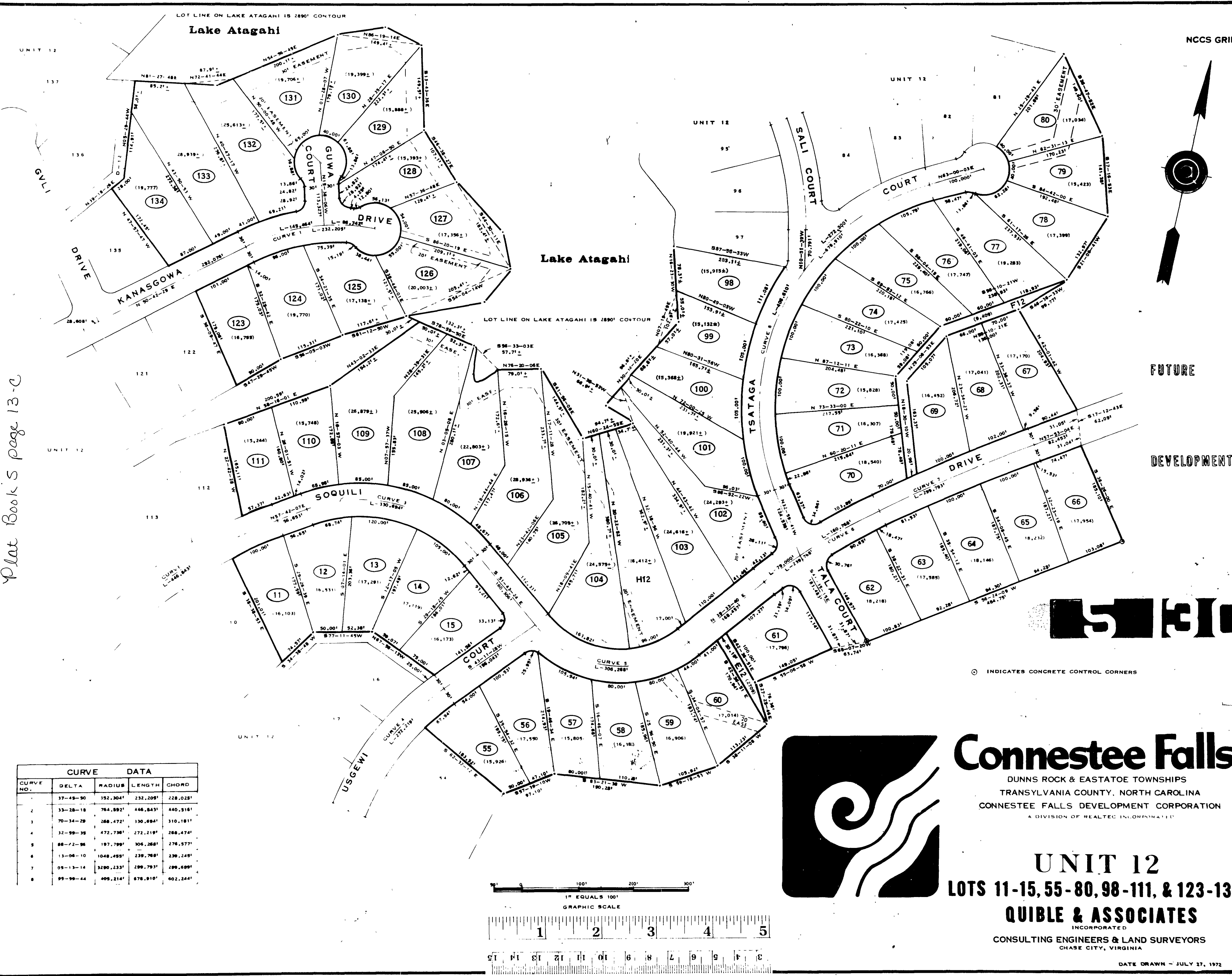
DUNNS ROCK & EASTATOE TOWNSHIPS
TRANSYLVANIA COUNTY, NORTH CAROLINA
CONNESTEE FALLS DEVELOPMENT CORPORATION
A DIVISION OF REALTEC INCORPORATED

UNIT 12
LOTS 81 THRU 97
QUIBLE & ASSOCIATES
INCORPORATED

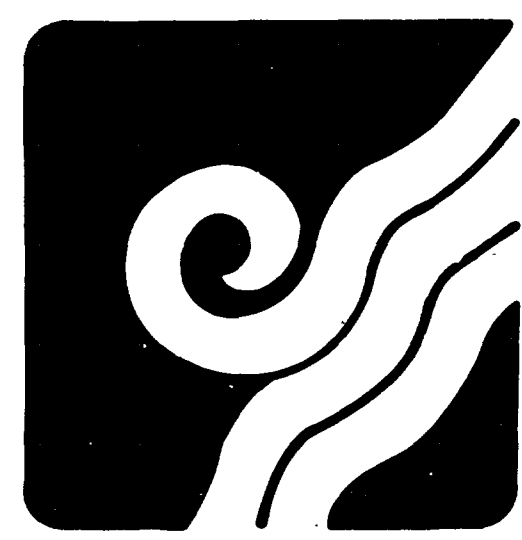
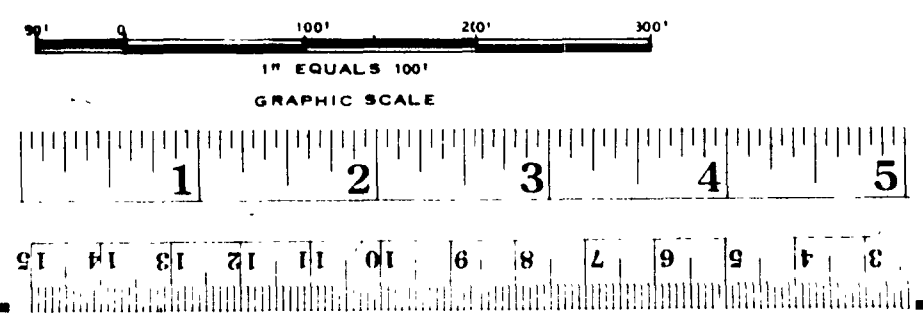
CONSULTING ENGINEERS & LAND SURVEYORS
CHASE CITY, VIRGINIA

DATE DRAWN - JULY 27, 1972

Plat Book 5 page 13-C



CURVE DATA				
CURVE NO.	DELTA	RADIUS	LENGTH	CHORD
1	37-49-30	352.304'	232.205'	228.028'
2	33-28-18	764.892'	446.843'	440.316'
3	70-34-29	268.472'	130.694'	310.181'
4	32-59-38	472.738'	272.219'	268.474'
5	88-72-56	197.799'	306.288'	276.577'
6	13-04-10	1048.495'	239.768'	239.249'
7	05-13-14	3290.233'	299.793'	299.699'
8	95-59-44	405.214'	678.910'	602.244'



Connestee Falls
 DUNNS ROCK & EASTTOWNE TOWNSHIPS
 TRANSYLVANIA COUNTY, NORTH CAROLINA
 CONNESTEE FALLS DEVELOPMENT CORPORATION
 A DIVISION OF REALTEC, INCORPORATED

UNIT 12
LOTS 11-15, 55-80, 98-111, & 123-134

QUIBLE & ASSOCIATES
 INCORPORATED
 CONSULTING ENGINEERS & LAND SURVEYORS
 CHASE CITY, VIRGINIA

DATE DRAWN - JULY 27, 1972