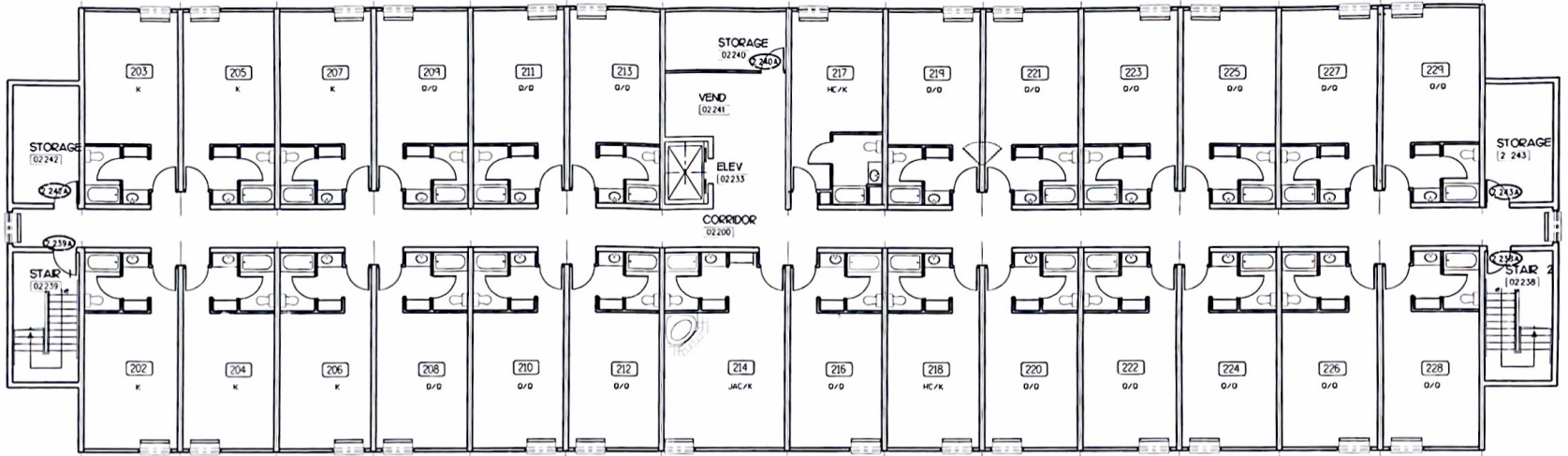


10 + 10.1'
20' - 12.6" (75')



DOOR SCHEDULE												
NO. IN CL. & ROOM NUMBER	S I Z E			TYPE	MATERIAL	FRAME	FIRE	DETAIL	HOLD	GLASS	LOUVER	REMARKS
	NO.	WIDTH	HEIGHT									
1 239A	3'-0"	7'-0"	3'-4"	RP	1H	1H						
1 239B	2'-0"	7'-0"	3'-4"	RP	1H	1H						
1 240A	2'-0"	7'-0"	3'-4"	RP	1H	1H						
1 240B	3'-0"	7'-0"	3'-4"	RP	1H	1H						
1 240C	3'-0"	7'-0"	3'-4"	RP	1H	1H						

DOOR LEGEND											
WD = WOOD	F = FLUSH	OH = OVERHEAD									
GL = GLASS	FD = FLUSH W/GLASS	VL = VERTICAL LIFT									
INS = INSULATED	FLIC = FLUSH W/HALF GLASS	SL = SLIDING									
HM = HOLLOW METAL	ALUM = ALUMINUM STRIKEFRONT	RL = ROLL-UP									
HC = HOLLOW METAL	RP = RAZED PANEL	WC = WIRE GATE									
M = METAL LEAD WOOD											

FINISH SCHEDULE									
FIN. SCHED. ROOM NUMBER	SPACE	FLOOR	BASE	WALLS			CEILING	REMARKS	
				NORTH	EAST	SOUTH			
02 200	CORRIDOR	CARPET	CERAMIC	CB-VI	CB-VI	CB-VI	ACT1		
02 239	STAIR 2	C-T	C-T	CB-P	CB-P	CB-P	CB-P		
02 239	STAIR 1	C-T	C-T	CB-P	CB-P	CB-P	CB-P		
02 240	STORAGE	CARPET	CERAMIC	CB-P	CB-P	CB-P	CB-P		
02 241	VEND.	C-T	C-T	CB-P	CB-P	CB-P	CB-P		
02 242	STOR.	CB-P	CB-P	CB-P	CB-P	CB-P	CB-P		
02 243	STOR.	CB-P	CB-P	CB-P	CB-P	CB-P	CB-P		

LEGEND			
FLOOR MATERIALS:	BASE	WALL	CEILING:
CONC = CONCRETE	WOOD = WOOD	CB-P = GYPSOBOARD PAINTED	GR = GYPSOBOARD
WOOD = WOOD	C-T = CERAMIC TILE	CB-PA = GYPSOBOARD PAINTED	WOOD = WOOD
CARP1 = CARPET TYPE 1	Q-T = QUARRY TILE	CB-E = GYPSOBOARD PAINTED EPOXY	ACT1 = ACOUSTICAL TYPE 1
CARP2 = CARPET TYPE 2	V-S = VINYL STRAIGHT	CB-V1 = GYPSOBOARD VINYL TYPE 1	ACT2 = ACOUSTICAL TYPE 2
CARP3 = CARPET TYPE 3	V-C = VINYL COVERED	CB-V2 = GYPSOBOARD VINYL TYPE 2	ACT3 = ACOUSTICAL TYPE 3
C-T = CERAMIC TILE		CB-C1 = GYPSOBOARD CERAMIC TILE	ESP = EPOXY
Q-T = QUARRY TILE		CB-P = CONCRETE BLK PAINTED	S-P = STEEL PAINTED
STONE = STONE		CB-PA = CONCRETE BLK PAINTED	
V1 = VINYL TILE OR SHEET		CB-E = CONCRETE BLK PAINTED EPOXY	
SIL = STEEL PLATE		PC-P = PRE CAST CONCRETE PAINTED	
		PC = PRE CAST CONCRETE	

1/8" = 1'
06/08/



A-10