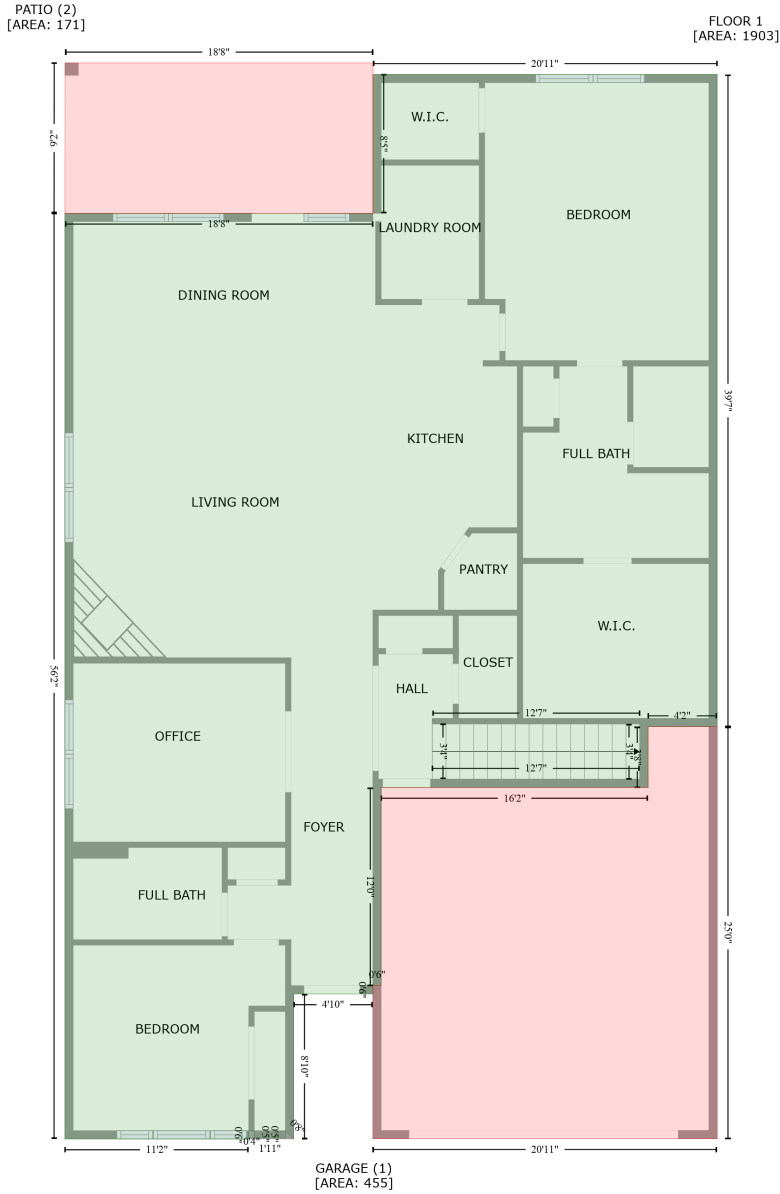


# 80 Cameo Drive, Flat Rock, North Carolina 28731, United States

Gross Living Area: 2618 sq. ft



Space	Area (sq. ft)	Calculation <small>Coordinate Polygon Area Algorithm using inches</small>
FLOOR 1 (Living area)	1903	$  \begin{aligned}  & -((715.8 + 715.8) * (-68.2 - 406.9) + (715.8 + 665.4) * (406.9 - 406.9) + (665.4 + 665.4) * (406.9 - 451.2) \\  & + (665.4 + 470.9) * (451.2 - 451.2) + (470.9 + 470.9) * (451.2 - 595.6) + (470.9 + 464.9) * (595.6 - 595.6) \\  & + (464.9 + 464.9) * (595.6 - 601.6) + (464.9 + 407.2) * (601.6 - 601.6) + (407.2 + 407.2) * (601.6 - 707.3) \\  & + (407.2 + 401.2) * (707.3 - 701.3) + (401.2 + 401.2) * (701.3 - 706.3) + (401.2 + 378.5) * (706.3 - 706.3) \\  & + (378.5 + 378.5) * (706.3 - 701.3) + (378.5 + 374.5) * (701.3 - 701.3) + (374.5 + 374.5) * (701.3 - 707.3) \\  & + (374.5 + 240.5) * (707.3 - 707.3) + (240.5 + 240.5) * (707.3 - 33) + (240.5 + 464.9) * (33 - 33) \\  & + (464.9 + 464.9) * (33 - -68.2) + (464.9 + 715.8) * (-68.2 - 406.9)  \end{aligned}  $

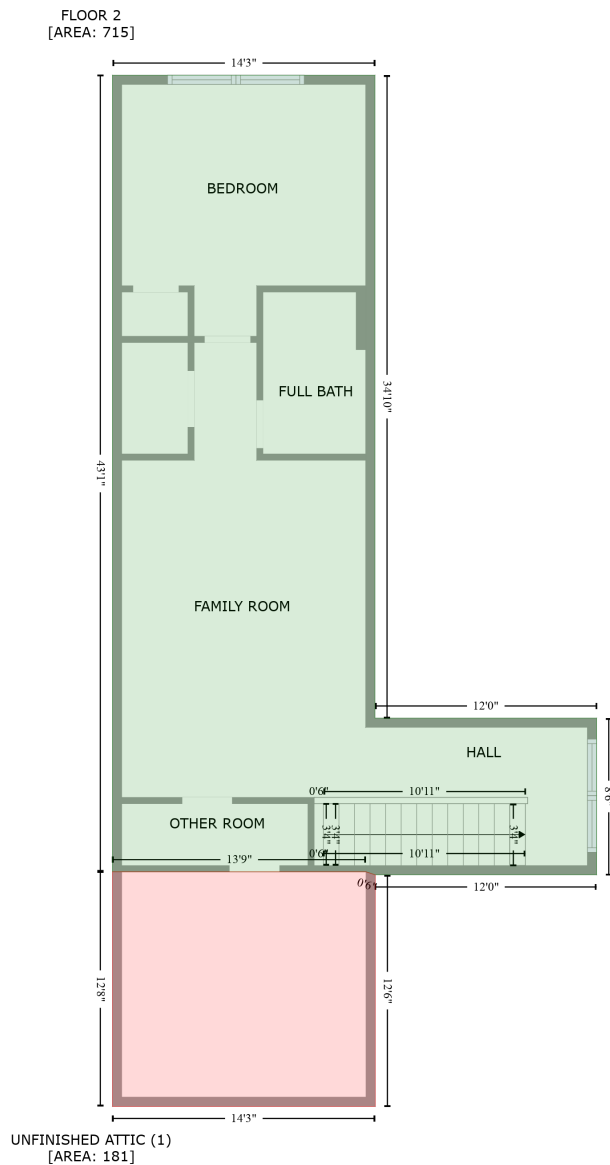
# 80 Cameo Drive, Flat Rock, North Carolina 28731, United States

Gross Living Area: 2618 sq. ft

Space	Area (sq. ft)	Calculation <small>Coordinate Polygon Area Algorithm using inches</small>
		$-(-68.2) * 0.5 * 0.00694$
GARAGE (Non-living area)	455	$-((715.8 + 715.8) * (406.9 - 707.1) + (715.8 + 464.9) * (707.1 - 707.1) + (464.9 + 464.9) * (707.1 - 595.6) + (464.9 + 470.9) * (595.6 - 595.6) + (470.9 + 470.9) * (595.6 - 451.2) + (470.9 + 665.4) * (451.2 - 451.2) + (665.4 + 665.4) * (451.2 - 406.9) + (665.4 + 715.8) * (406.9 - 406.9)) * 0.5 * 0.00694$
PATIO (Non-living area)	171	$-((464.9 + 464.9) * (-76.6 - 33) + (464.9 + 240.5) * (33 - 33) + (240.5 + 240.6) * (33 - -76.6) + (240.6 + 464.9) * (-76.6 - -76.6)) * 0.5 * 0.00694$

# 80 Cameo Drive, Flat Rock, North Carolina 28731, United States

Gross Living Area: 2618 sq. ft



Space	Area (sq. ft)	Calculation <small>Coordinate Polygon Area Algorithm using inches</small>
FLOOR 2 (Living area)	715	$-((565.6 + 565.6) * (-61.7 - 355.8) + (565.6 + 709.6) * (355.8 - 355.8) + (709.6 + 709.6) * (355.8 - 457.7) + (709.6 + 565.8) * (457.7 - 457.7) + (565.8 + 559.8) * (457.7 - 455.7) + (559.8 + 395.1) * (455.7 - 455.7) + (395.1 + 395.1) * (455.7 - -61.7) + (395.1 + 565.6) * (-61.7 - -61.7)) * 0.5 * 0.00694$
UNFINISHED ATTIC (Non-living area)	181	$-((559.8 + 565.8) * (455.7 - 457.7) + (565.8 + 565.8) * (457.7 - 608) + (565.8 + 395.1) * (608 - 608) + (395.1 + 395.1) * (608 - 455.7) + (395.1 + 559.8) * (455.7 - 455.7)) * 0.5 * 0.00694$