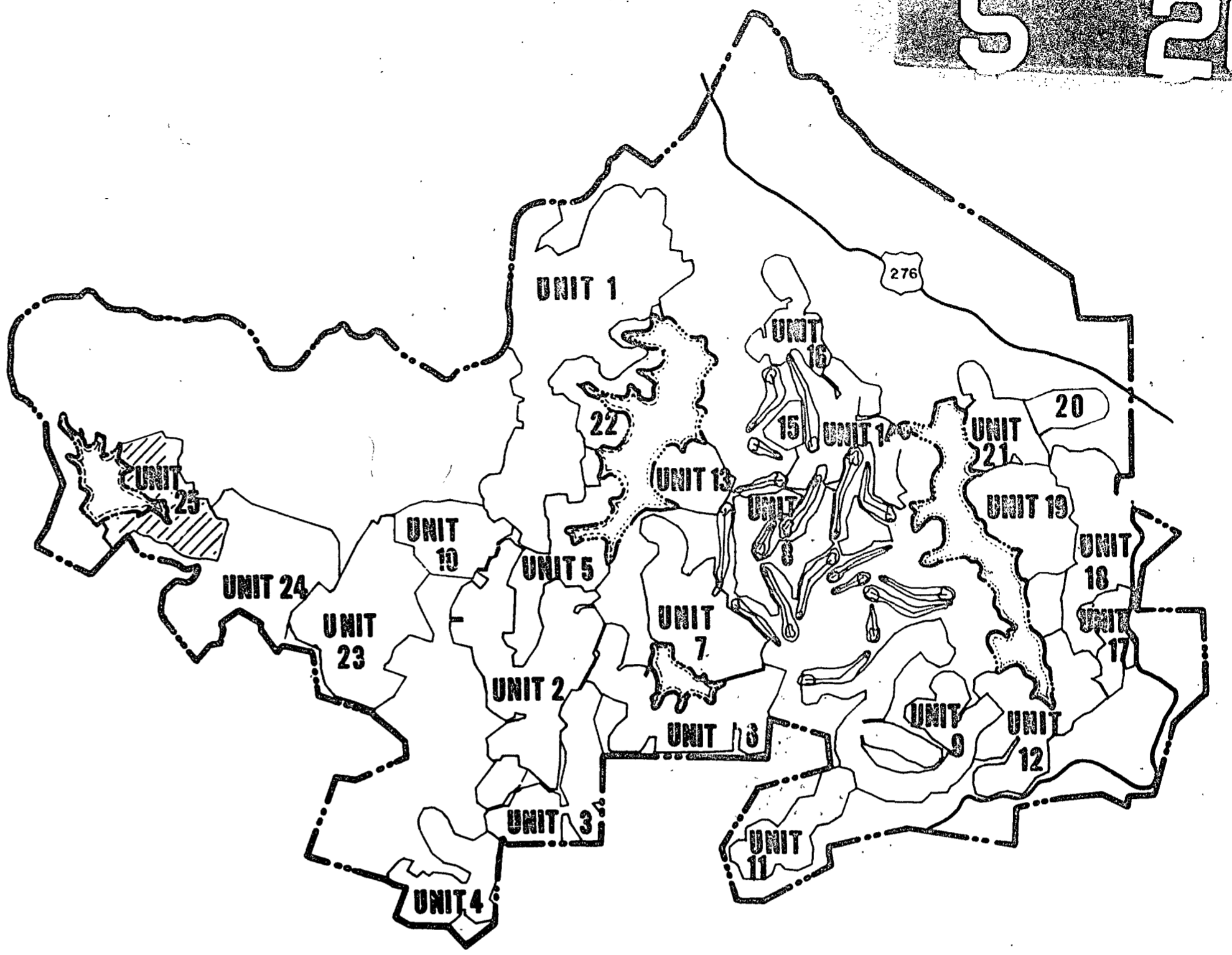
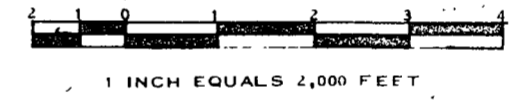


VICINITY MAP



LOCATION MAP



Plat Book 5 page 26

I, F. RICHARD QUILBE, CERTIFY THAT THIS MAP WAS DRAWN UNDER MY SUPERVISION FROM AN ACTUAL SURVEY MADE UNDER MY SUPERVISION, THAT THE ERROR OF CLOSURE AS CALCULATED BY LATITUDES AND DEPARTURES IS LESS THAN 1/5000, AND THAT THIS MAP WAS PREPARED IN ACCORDANCE WITH G.S. 47-30 AS AMENDED. WITNESS MY HAND AND SEAL THIS 27 DAY OF Oct, A.D., 1972

F. Richard Quible
REGISTERED LAND SURVEYOR
REGISTRATION NO. 1-1157

I, Nancy W. Ashworth, A NOTARY PUBLIC IN AND FOR MECKLENBURG COUNTY, VIRGINIA DO HEREBY CERTIFY THAT F. RICHARD QUILBE PERSONALLY APPEARED BEFORE ME THIS DAY AND BEING DULY SWORN, ACKNOWLEDGES THAT THE FOREGOING CERTIFICATE WAS EXECUTED BY HIM.
WITNESS MY HAND AND SEAL THIS 27th DAY OF Oct, A.D., 1972
Nancy W. Ashworth
NOTARY PUBLIC
MY COMMISSION EXPIRES 10-27-1975

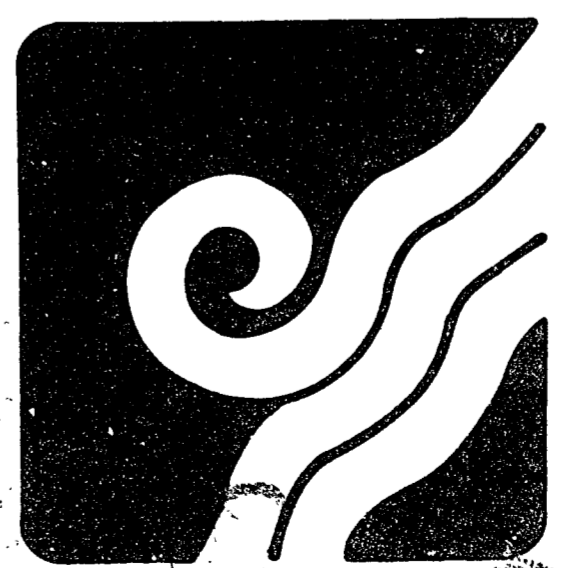
STATE OF NORTH CAROLINA
COUNTY OF TRANSYLVANIA
THE FOREGOING CERTIFICATES OF F. Richard Quible P.E. AND REGISTERED LAND SURVEYOR, Irving C. Hoffman P.E., AND Nancy W. Ashworth and Ann D. Swangin NOTARIES PUBLIC ARE CERTIFIED TO BE CORRECT. THIS INSTRUMENT WAS PRESENTED FOR REGISTRATION AND RECORDED IN THIS OFFICE IN PLAT BOOK 5, PAGE 26, THIS 6th DAY OF Nov, AT 3:45 O'CLOCK P.M., 1972.

Ann D. Swangin
REGISTER OF DEEDS

NOTES
CONNESTEE FALLS DEVELOPMENT CORPORATION RESERVES RIGHTS OF WAY AND EASEMENTS FOR WATER, GAS, SEWER, AND DRAINAGE PIPES AND FOR POLES AND OVERHEAD AND UNDERGROUND WIRES AND CONDUITS FOR ELECTRIC AND TELEPHONE SERVICES, TOGETHER WITH ANY AND ALL APPURTENANCES APPERTAINING THERETO, ON OVER, AND ACROSS EACH OF THE LOTS SHOWN HEREON, SAID EASEMENTS TO BE STRIPS OF LAND 5 FEET IN WIDTH CONTIGUOUS TO THE SIDE AND REAR LINES OF EACH LOT.
CONNESTEE FALLS DEVELOPMENT CORPORATION FURTHER RESERVES THE RIGHT TO SUBSEQUENTLY GRANT RIGHTS OF WAY AND EASEMENTS OVER THE ABOVE DESCRIBED STRIPS FOR THE ABOVE STATED PURPOSES TO ANY PUBLIC AGENCIES OR UTILITY FIRMS OR TO GRANT ITS RIGHTS IN SUCH EASEMENTS AND RIGHTS OF WAY TO A GROUP COMPOSED OF SUBSEQUENT OWNERS OF THE LOTS SHOWN HEREON.
THE LANDS DEPICTED AND SHOWN ON THIS PLAT ARE SUBJECT TO THE PROVISIONS OF THE DECLARATION OF RESTRICTIVE COVENANTS FOR CONNESTEE FALLS RECORDED WITH THE REGISTER OF DEEDS OF TRANSYLVANIA COUNTY OF NORTH CAROLINA ON THE 4TH DAY OF JUNE 1971, IN THE DEED BOOK 189, PAGE 443, ET SEQ., AS AMENDED AND SUPPLEMENTAL DECLARATION OF RESTRICTIVE COVENANTS FOR UNIT 25 RECORDED IN THE OFFICE OF THE REGISTER OF DEEDS OF TRANSYLVANIA COUNTY OF NORTH CAROLINA IN DEED BOOK 190 PAGE 37.
ALL BEARINGS ARE BASED ON THE NORTH CAROLINA COORDINATE SYSTEM.
CURVES AT PROPERTY LINE INTERSECTIONS HAVE A RADIUS OF 20.00' AND ARC LENGTH OF 31.42' UNLESS OTHERWISE NOTED.
LOT DIMENSIONS SHOWN ON CURVES ARE ARC LENGTH.
IRON RODS AT ALL CORNERS UNLESS OTHERWISE NOTED.
CUL-DE-SACS HAVE A RADIUS OF 45.00' UNLESS OTHERWISE NOTED.
ALL FIGURES IN PARENTHESES () DENOTE LOT SQUARE FOOTAGE.

I, IRVING C. HOFFMAN, CERTIFY THAT UNDER MY DIRECTION THE LOTS SHOWN HEREON HAVE BEEN STAKED AS COMPUTED TO WITHIN AN ACCURACY OF 1/4000.
Irving C. Hoffman
PROFESSIONAL ENGINEER
REGISTRATION NO. 432

I, Ann D. Swangin, A NOTARY PUBLIC IN AND FOR Transylvania County DO HEREBY CERTIFY THAT IRVING C. HOFFMAN PERSONALLY APPEARED BEFORE ME THIS DAY AND BEING DULY SWORN, ACKNOWLEDGES THAT THE FOREGOING CERTIFICATE WAS EXECUTED BY HIM.
WITNESS MY HAND AND SEAL THIS 27th DAY OF Oct, A.D., 1972.
Ann D. Swangin
NOTARY PUBLIC
MY COMMISSION EXPIRES 6-13-75



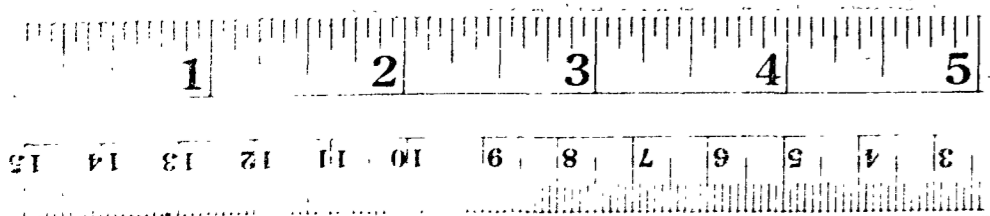
Connestee Falls

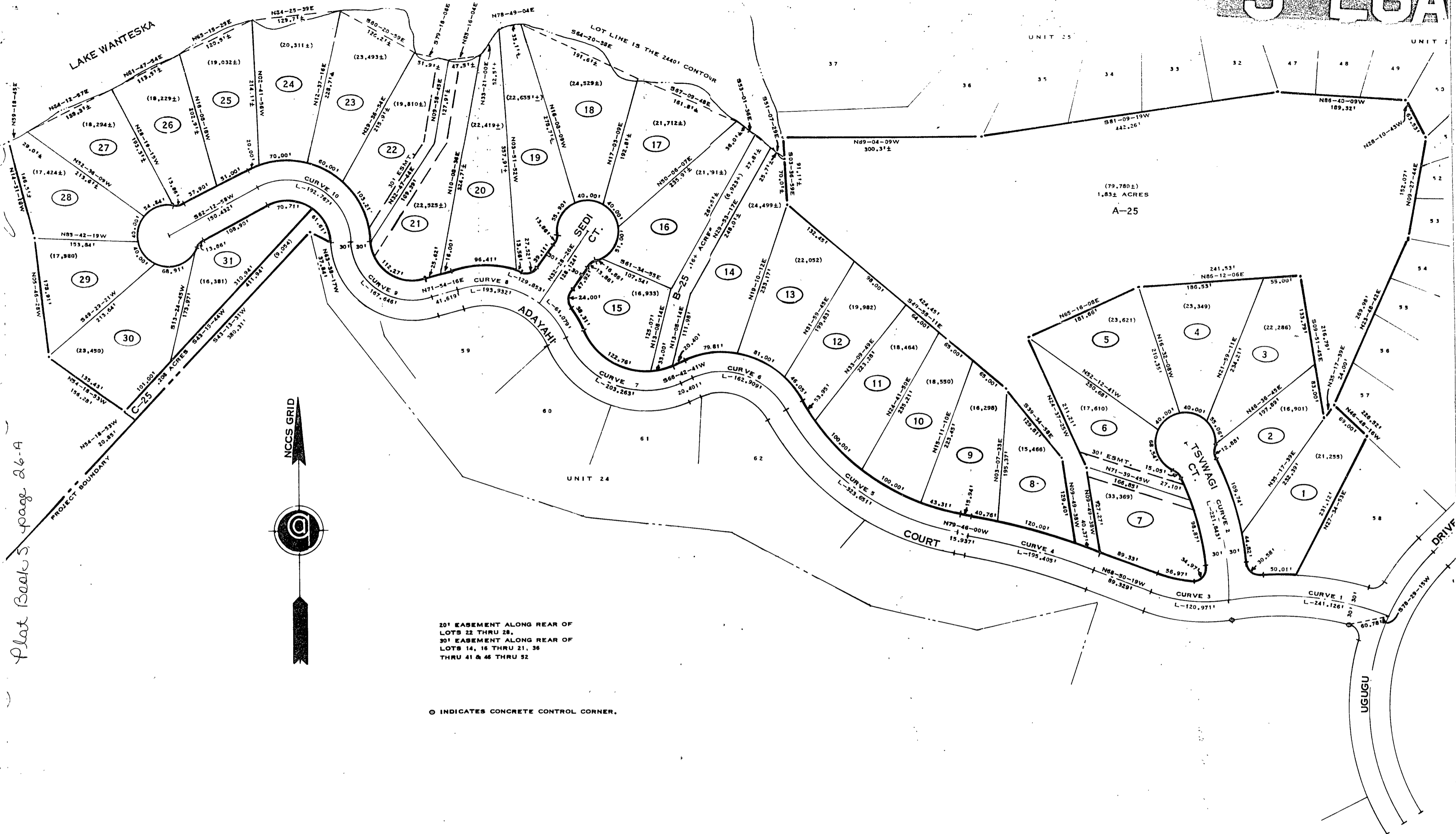
DUNNS ROCK & EASTATOE TOWNSHIPS
TRANSYLVANIA COUNTY, NORTH CAROLINA
CONNESTEE FALLS DEVELOPMENT CORPORATION
A DIVISION OF REALTY INCORPORATED

UNIT 25

LOTS 1 THRU 87

Quible & Associates
INCORPORATED
CONSULTING ENGINEERS & LAND SURVEYORS
CHASE, N.C., VIRGINIA





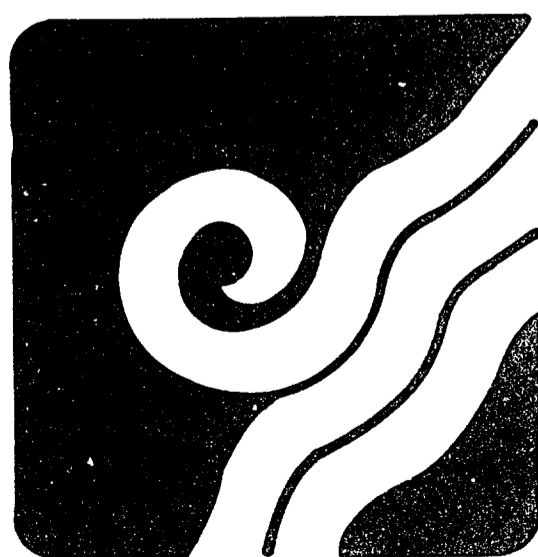
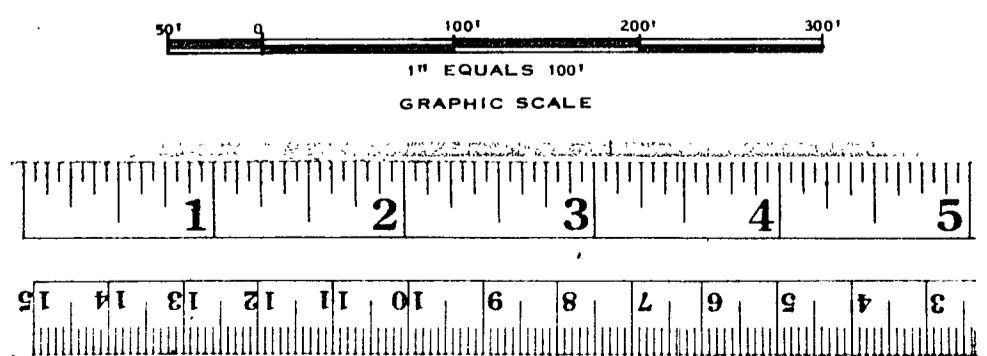
Plat Book 5 page 26-A



20' EASEMENT ALONG REAR OF LOTS 22 THRU 28.
30' EASEMENT ALONG REAR OF LOTS 14, 15 THRU 21, 36 THRU 41 & 45 THRU 52

⊙ INDICATES CONCRETE CONTROL CORNER.

CURVE		DATA		
CURVE NO.	DELTA	RADIUS	LENGTH	CHORD
1	31-09-19	449.440'	241.126'	238.166'
2	32-50-13	367.023'	221.843'	218.820'
3	30-48-33	225.213'	120.971'	119.522'
4	10-53-41	1024.511'	195.405'	195.109'
5	50-23-13	368.029'	323.051'	313.322'
6	83-54-33	111.240'	162.909'	148.737'
7	89-43-13	128.374'	203.263'	182.688'
8	85-31-44	129.915'	193.932'	176.421'
9	105-43-29	90.824'	167.646'	144.840'
10	115-26-48	95.670'	192.767'	161.773'



Connestee Falls

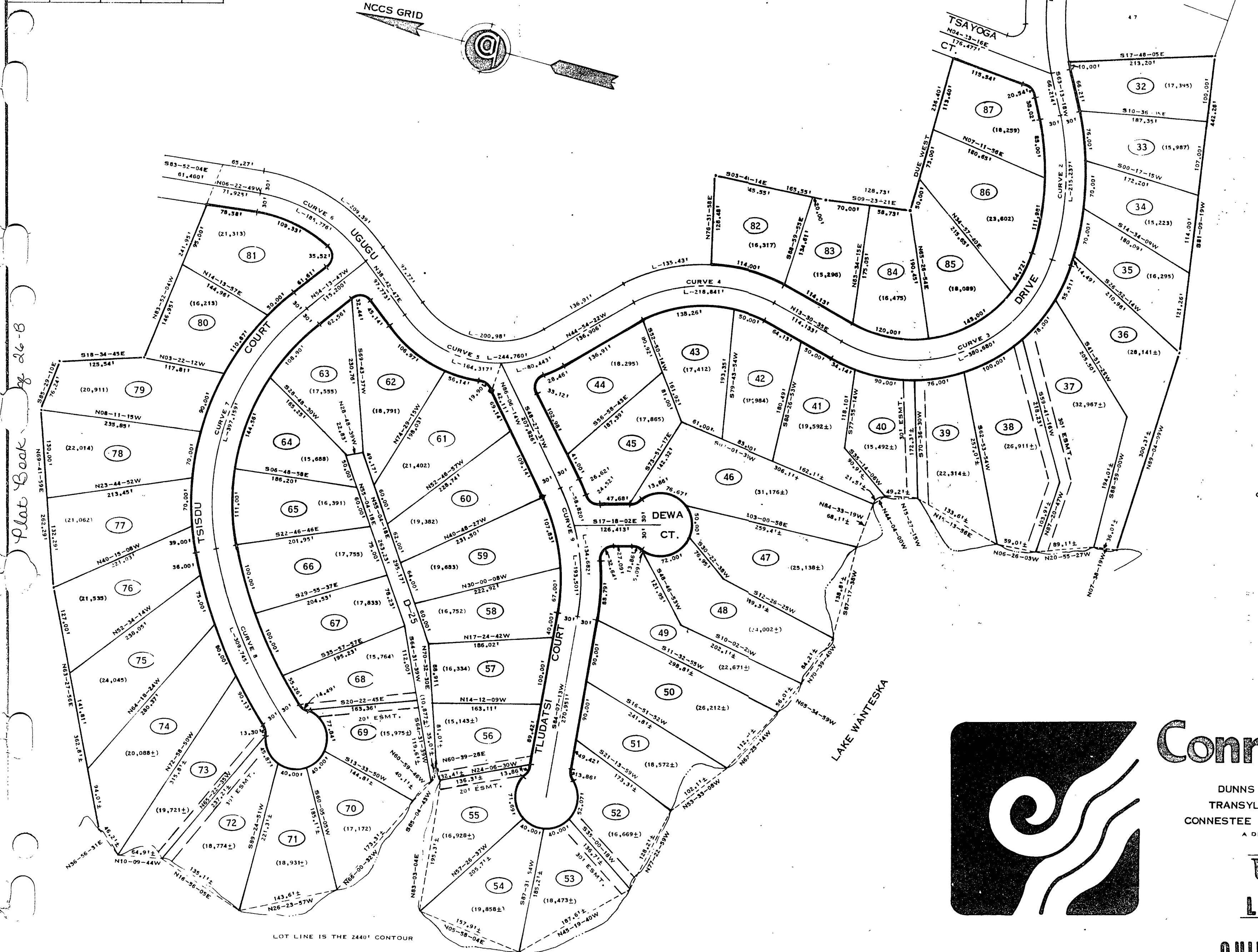
DUNNS ROCK & EASTATOE TOWNSHIPS
TRANSYLVANIA COUNTY, NORTH CAROLINA
CONNESTEE FALLS DEVELOPMENT CORPORATION
A DIVISION OF REALTEC INCORPORATED

UNIT 25
LOTS 1 THRU 31

QUIBLE & ASSOCIATES
INCORPORATED
CONSULTING ENGINEERS & LAND SURVEYORS
CHASE CITY, VIRGINIA

CURVE NO.	DELTA	RADIUS	LENGTH	CHORD
1	116-54-08	408,295'	613,055'	695,893'
2	29-08-09	423,264'	215,237'	212,926'
3	101-09-08	215,623'	380,600'	333,133'
4	58-24-58	214,644'	218,841'	209,485'
5	83-37-09	167,709'	244,760'	223,609'
6	45-05-38	238,049'	185,776'	181,019'
7	52-28-14	304,260'	397,159'	377,777'
8	25-15-54	702,440'	309,745'	307,242'
9	35-39-36	110,902'	193,501'	190,393'

526



30' EASEMENT ALONG REAR OF LOTS 36 THRU 41, 46 THRU 52, 56, AND 72 THRU 74.

○ INDICATES CONCRETE CONTROL CORNER

Plot Book 26-B

BS - 26B



Connestee Falls

DUNNS ROCK & EASTATOE TOWNSHIPS
 TRANSYLVANIA COUNTY, NORTH CAROLINA
 CONNESTEE FALLS DEVELOPMENT CORPORATION
 A DIVISION OF REALTEC INCORPORATED

UNIT 25
LOTS 32 THRU 87

QUIBLE & ASSOCIATES
 INCORPORATED

CONSULTING ENGINEERS & LAND SURVEYORS
 CHASE CITY, VIRGINIA

DATE DRAWN 12-25-71
 SHEET 3 OF 3

