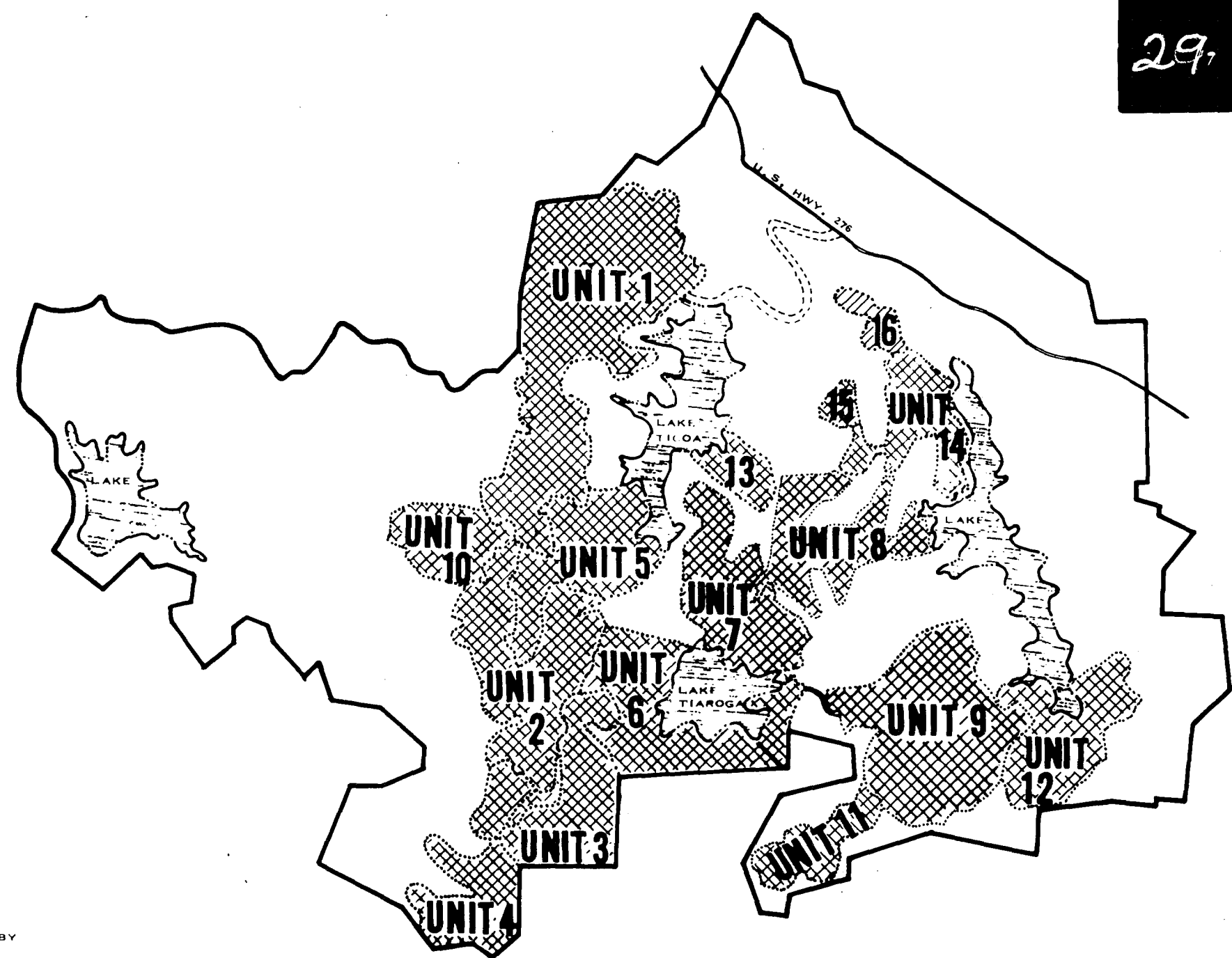
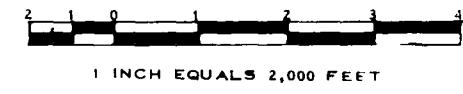


VICINITY MAP



LOCATION MAP



I, F. RICHARD QUIBLE, CERTIFY THAT THIS MAP WAS DRAWN UNDER MY SUPERVISION FROM AN ACTUAL SURVEY MADE UNDER MY SUPERVISION, THAT THE ERROR OF CLOSURE AS CALCULATED BY LATITUDES AND DEPARTURES IS LESS THAN 1/5000, AND THAT THIS MAP WAS PREPARED IN ACCORDANCE WITH G.S. 41-31 AS AMENDED. WITNESS MY HAND AND SEAL THIS 3d DAY OF OCT. A.D., 1974.

F. Richard Quible
REGISTERED LAND SURVEYOR
REGISTRATION NO. L-1157

I, Nancy W. Ashworth, A NOTARY PUBLIC IN AND FOR MECKLENBURG COUNTY, VIRGINIA DO HEREBY CERTIFY THAT F. RICHARD QUIBLE PERSONALLY APPEARED BEFORE ME THIS DAY AND BEING DULY SWORN, ACKNOWLEDGES THAT THE FOREGOING CERTIFICATE WAS EXECUTED BY HIM.
WITNESS MY HAND AND SEAL THIS 3d DAY OF OCT. A.D., 1974.

Nancy W. Ashworth
NOTARY PUBLIC
MY COMMISSION EXPIRES Oct. 27, 1975

STATE OF NORTH CAROLINA
COUNTY OF TRANSYLVANIA

THE FOREGOING CERTIFICATES OF F. Richard Quible P.E. AND REGISTERED LAND SURVEYOR, Irving C. Hoffman P.E. AND Nancy W. Ashworth and Emily Lee NOTARIES PUBLIC ARE CERTIFIED TO BE CORRECT, THIS INSTRUMENT WAS PRESENTED FOR REGISTRATION AND RECORDED IN THIS OFFICE IN PLAT BOOK 516 PAGE 29 & 29 A THIS 16th DAY OF Dec. AT 4:30 O'CLOCK P. M., 1974.

Fred N. Israel
REGISTER OF DEEDS

NOTES

CONNESTEE FALLS DEVELOPMENT CORPORATION RESERVES RIGHTS OF WAY AND EASEMENTS FOR WATER, GAS, SEWER, AND DRAINAGE PIPES AND FOR POLES AND OVERHEAD AND UNDERGROUND WIRES AND CONDUITS FOR ELECTRIC AND TELEPHONE SERVICES, TOGETHER WITH ANY AND ALL APPURTENANCES APPERTAINING THERETO, ON OVER, AND ACROSS EACH OF THE LOTS SHOWN HEREON, SAID EASEMENTS TO BE STRIPS OF LAND 5 FEET IN WIDTH CONTIGUOUS TO THE SIDE AND REAR LINES OF EACH LOT.

CONNESTEE FALLS DEVELOPMENT CORPORATION FURTHER RESERVES THE RIGHT TO SUBSEQUENTLY GRANT RIGHTS OF WAY AND EASEMENTS OVER THE ABOVE DESCRIBED STRIPS FOR THE ABOVE STATED PURPOSES TO ANY PUBLIC AGENCIES OR UTILITY FIRMS OR TO GRANT ITS RIGHTS IN SUCH EASEMENTS AND RIGHTS OF WAY TO A GROUP COMPOSED OF SUBSEQUENT OWNERS OF THE LOTS SHOWN HEREON.

THE LANDS DEPICTED AND SHOWN ON THIS PLAT ARE SUBJECT TO THE PROVISIONS OF THE DECLARATION OF RESTRICTIVE COVENANTS FOR CONNESTEE FALLS RECORDED WITH THE REGISTER OF DEEDS OF TRANSYLVANIA COUNTY OF NORTH CAROLINA ON THE 4TH DAY OF JUNE 1971, IN THE DEED BOOK 190, PAGE 443, ET. SEQ., AS AMENDED AND SUPPLEMENTAL DECLARATION OF RESTRICTIVE COVENANTS FOR UNIT 16, RECORDED IN THE OFFICE OF THE REGISTER OF DEEDS OF TRANSYLVANIA COUNTY OF NORTH CAROLINA IN DEED BOOK 175 PAGE 606.

ALL BEARINGS ARE BASED ON THE NORTH CAROLINA COORDINATE SYSTEM.

CURVES AT PROPERTY LINE INTERSECTIONS HAVE A RADIUS OF 20,000' AND ARC LENGTH OF 31.42' UNLESS OTHERWISE NOTED.

LOT DIMENSIONS SHOWN ON CURVES ARE ARC LENGTH.

IRON RODS AT ALL CORNERS UNLESS OTHERWISE NOTED.

CUL-DE-SACS HAVE A RADIUS OF 45,000' UNLESS OTHERWISE NOTED.

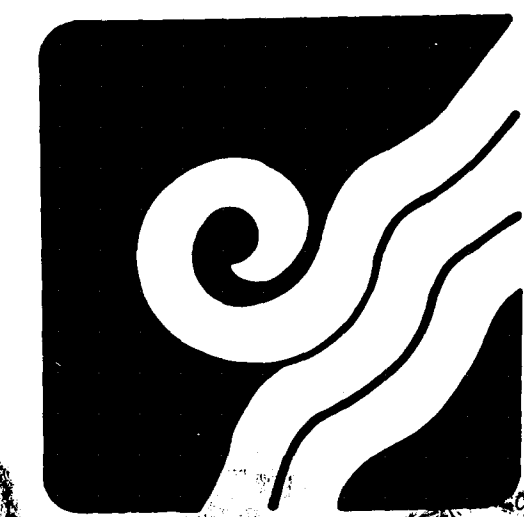
ALL FIGURES IN PARENTHESIS () DO NOTF LOT SQUARE FOOTAGE.

I, IRVING C. HOFFMAN, CERTIFY THAT UNDER MY DIRECTION THE LOTS SHOWN HEREON HAVE BEEN STAKED AS COMPUTED TO WITHIN AN ACCURACY OF 1/4000.

Irving C. Hoffman
PROFESSIONAL ENGINEER
REGISTRATION NO. 4328

I, Emily Lee, A NOTARY PUBLIC IN AND FOR Transylvania County, N.C. DO HEREBY CERTIFY THAT IRVING C. HOFFMAN PERSONALLY APPEARED BEFORE ME THIS DAY AND BEING DULY SWORN, ACKNOWLEDGES THAT THE FOREGOING CERTIFICATE WAS EXECUTED BY HIM.
WITNESS MY HAND AND SEAL THIS 6th DAY OF Dec. A.D., 1974.

Emily Lee
NOTARY PUBLIC
MY COMMISSION EXPIRES Sept. 10, 1978



Connestee Falls

DUNNS ROCK & EASTATOE TOWNSHIPS
TRANSYLVANIA COUNTY, NORTH CAROLINA
CONNESTEE FALLS DEVELOPMENT CORPORATION
A DIVISION OF REALTEC INCORPORATED

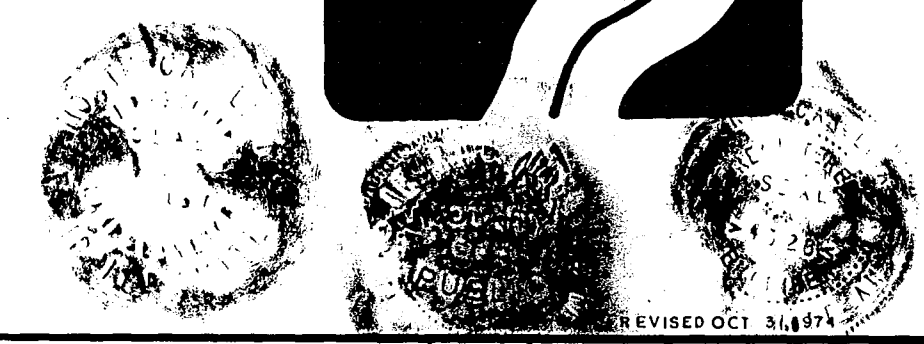
a subsidiary of
Certain-teed
Products Corporation

UNIT 16

LOTS 1 THRU 59

QUIBLE & ASSOCIATES

INCORPORATED
CONSULTING ENGINEERS & LAND SURVEYORS
CHASE CITY, VIRGINIA

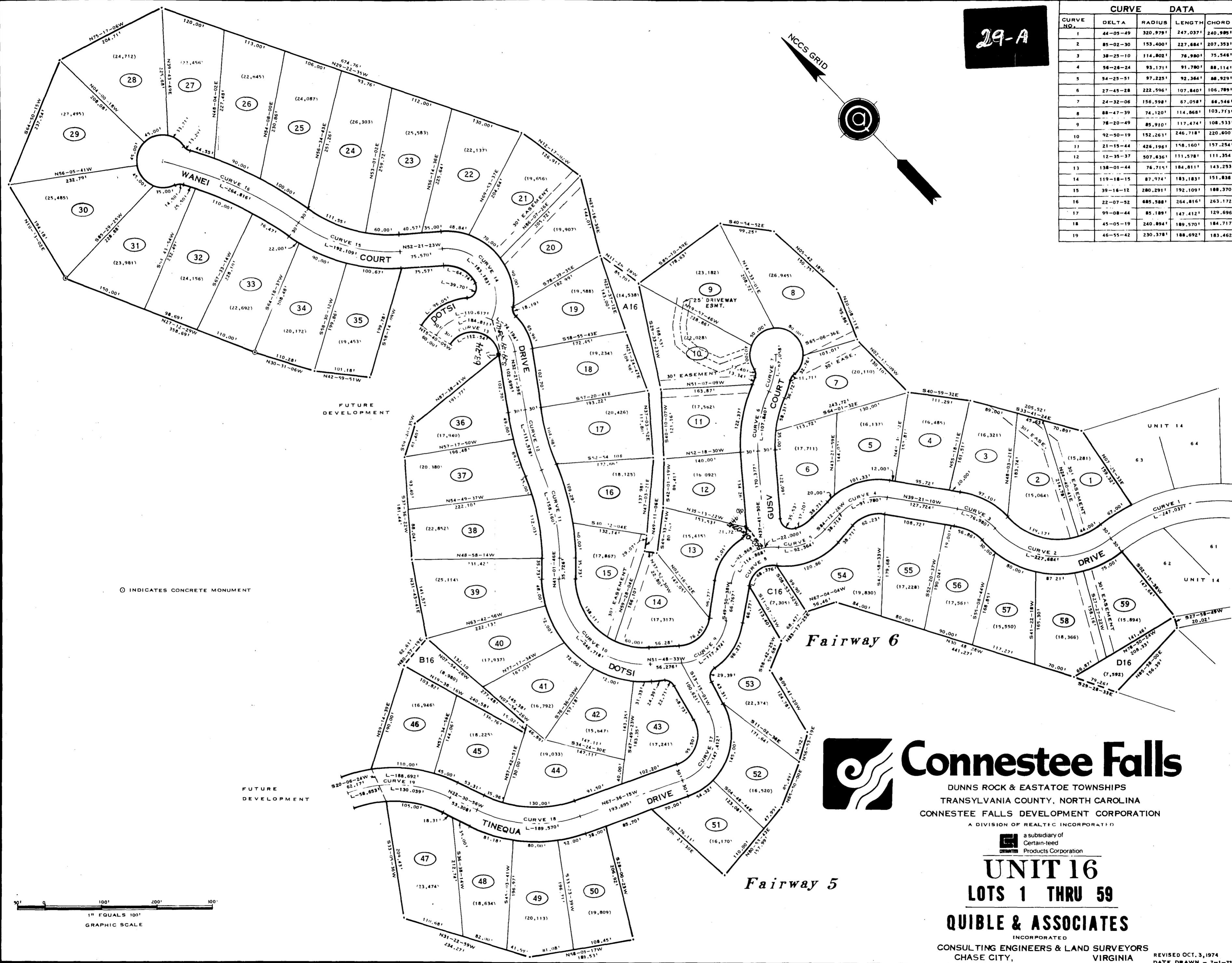


REVISED OCT 31, 1974

File 1 Slide 29

29-A

CURVE DATA				
CURVE NO.	DELTA	RADIUS	LENGTH	CHORD
1	44-05-49	320.979'	247.037'	240.985'
2	85-02-30	153.400'	227.884'	207.353'
3	38-25-10	114.802'	76.980'	75.548'
4	58-26-24	93.171'	91.780'	88.114'
5	54-25-51	97.225'	92.364'	88.925'
6	27-45-28	222.596'	107.840'	106.789'
7	24-32-06	156.598'	67.058'	66.546'
8	88-47-39	74.120'	114.868'	103.713'
9	78-20-49	85.910'	117.474'	108.533'
10	92-50-19	152.263'	246.718'	220.600'
11	21-15-44	426.196'	156.160'	157.254'
12	12-35-37	507.636'	111.578'	111.354'
13	138-01-44	76.715'	184.811'	143.233'
14	119-18-15	87.974'	183.183'	151.838'
15	39-16-12	280.291'	192.109'	188.370'
16	22-07-52	685.588'	264.816'	263.172'
17	99-08-44	85.189'	147.412'	129.696'
18	45-05-19	240.894'	189.570'	184.717'
19	46-55-42	230.378'	188.692'	183.462'



File 1 Slide 29-A

⊙ INDICATES CONCRETE MONUMENT

FUTURE DEVELOPMENT



Connestee Falls

DUNNS ROCK & EASTATOE TOWNSHIPS
 TRANSYLVANIA COUNTY, NORTH CAROLINA
 CONNESTEE FALLS DEVELOPMENT CORPORATION
 A DIVISION OF REALTEC INCORPORATED

a subsidiary of
 Certain-teed
 Products Corporation

UNIT 16 LOTS 1 THRU 59

QUIBLE & ASSOCIATES
 INCORPORATED
 CONSULTING ENGINEERS & LAND SURVEYORS
 CHASE CITY, VIRGINIA

REVISED OCT. 3, 1974
 DATE DRAWN - 7-1-74