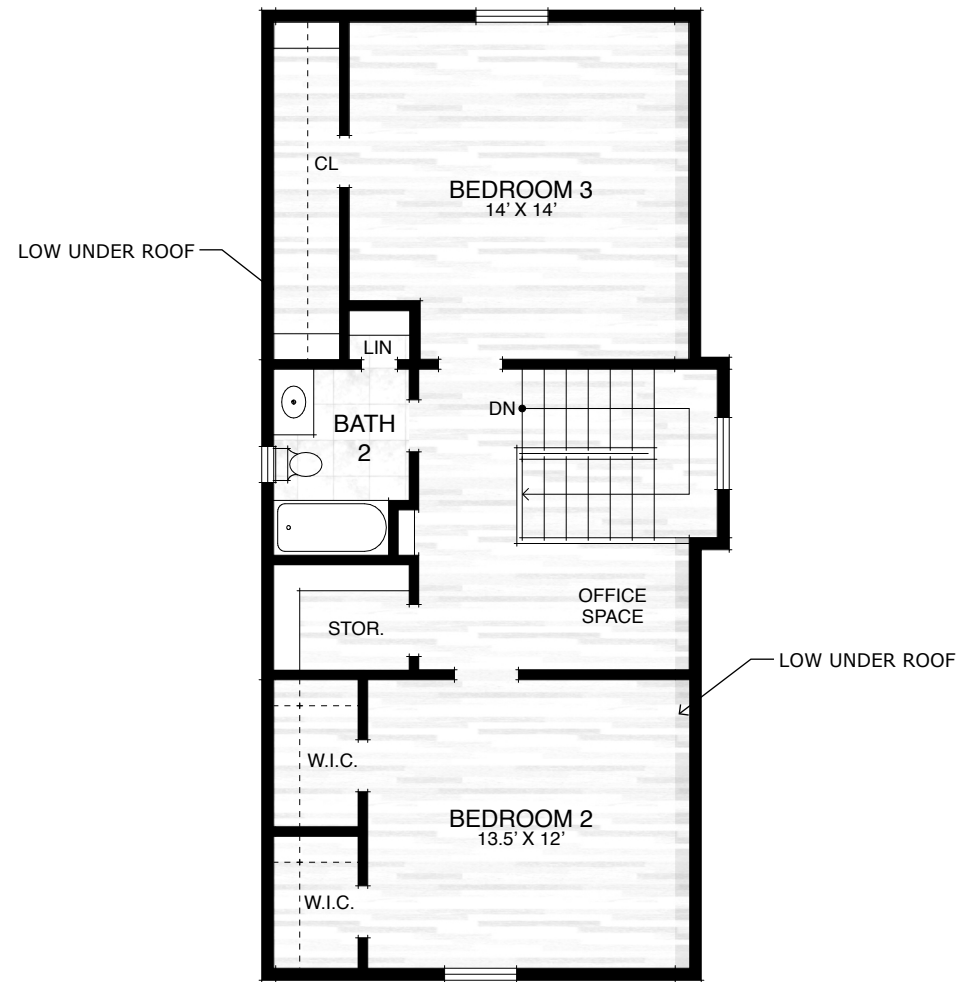


747 Poplar Crest Drive
Pisgah Forest, NC

UPPER LEVEL LIVING SPACE: 698 SQ. FT.
MAIN LEVEL LIVING SPACE: 1,138 SQ. FT.
TOTAL HEATED LIVING SPACE: 1,836 SQ. FT.

UPPER BONUS*: 51 SQ. FT.
COVERED PORCH/DECK: 359 SQ. FT.
HEATED WORKSHOP/STUDIO: 126 SQ. FT.
TOTAL AREA UNDER ROOF: 2,372 SQ. FT.

OPEN DECKS: 73 SQ. FT.



Upper Level Floor Plan



Main Level Floor Plan

- HEATED LIVING SPACE
- UNFINISHED/UNHEATED/BONUS SPACE
- COVERED PORCH/DECK
- UNCOVERED DECK/PATIO

NOTES:
* - LIVING SPACE REQUIRES A MIN. OF 7'-0" CEILING HEIGHT (5'-0" BELOW A SLOPED ROOF), FINISHED SURFACES, HEATED SPACES, & DIRECT CONNECTION WITH OTHER LIVING SPACE. "BONUS" SPACE MEETS SOME BUT NOT ALL OF THESE QUALIFICATIONS.
1. MEASUREMENTS WERE OBTAINED VIA THE NORTH CAROLINA REAL ESTATE COMMISSION GUIDELINES.
2. DIMENSIONS ARE ROUNDED TO THE NEAREST 1/2 FOOT AND ARE APPROXIMATE.
3. INFORMATION WITHIN THESE DRAWINGS ARE INTENDED SOLELY FOR THE USE OF REALTY MARKETING. NOT FOR CONSTRUCTION.
4. FOR MORE INFORMATION REGARDING MEASUREMENTS, MARKETING FLOOR PLANS, OR REMODEL DESIGN & CONSULTING, CONTACT WES HOGAN AT: FeaturedListingsWNC@gmail.com, 1.828.577.1915, OR www.FeaturedListingsWNC.com