

Plat File 13 Slide 140

NCGS (NAD 83/1986) TIES FROM NCGS MONUMENT "HALLELUJAH" TO EACH OF THE INDIVIDUAL UNITS with FINISH FLOOR ELEV and CEILING ELEV

Course	Bearing	Distance	Unit #	Finish Floor Elev	Ceiling Elev
Ⓐ	N33°40'19"E	992.39'	UNIT 101	2159.25'	2174.83'
Ⓑ	N33°39'41"E	1051.88'	UNIT 102	2159.40'	2174.83'
Ⓒ	N33°39'55"E	1095.59'	UNIT 103	2158.50'	2174.83'
Ⓓ	N34°04'52"E	1194.15'	UNIT 104	2158.50'	2174.83'
Ⓔ	N32°30'03"E	1219.49'	UNIT 105	2158.50'	2174.83'
Ⓕ	N26°47'45"E	1226.63'	UNIT 106	2159.90'	2174.83'
Ⓖ	N23°38'38"E	1201.01'	UNIT 107	2161.65'	2174.83'
Ⓗ	N23°28'55"E	1168.27'	UNIT 108	2162.60'	2174.83'

(SEE NOTE #15 REGARDING CEILING ELEVATIONS)

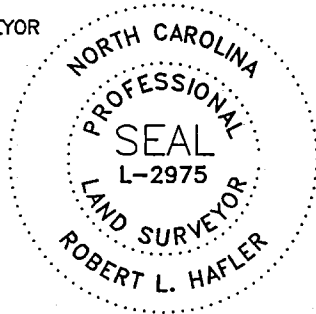
LEGEND:

- 3.02'* ASTERISK DENOTES ADJUSTED DISTANCE (INCOMPLETE WALL CONSTRUCTION)
- ♿ HANDICAP ACCESS
- ⊠ GRANIT PLANTER WITH 3/4" ELECTRICAL CONDUIT
- ⊙ STREET LIGHT
- ⊕ TP TRANSFORMER PAD
- ▒ BRICK PAVERS
- ▓ CONCRETE SIDEWALK
- ▨ LIMITED COMMON ELEMENT (LCE)

2009003268
 TRANSYLVANIA CO., NC FEE \$21.00
 PRESENTED & RECORDED
 06-10-2009 04:33:35 PM
 CINDY M OWNBEY
 REGISTER OF DEEDS
 BY: TERESA D MORTON
 DEPUTY REGISTER OF DEEDS
 PF 13
 PG:140-140

WITNESS MY ORIGINAL SIGNATURE, LICENSE NUMBER, AND SEAL THIS THE 18 DAY OF May, 2009

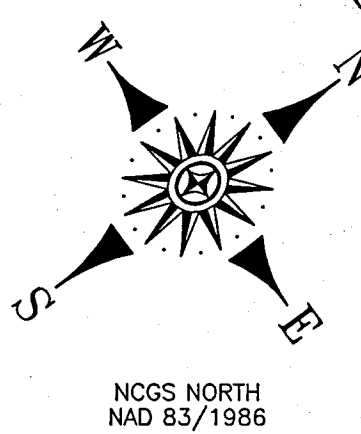
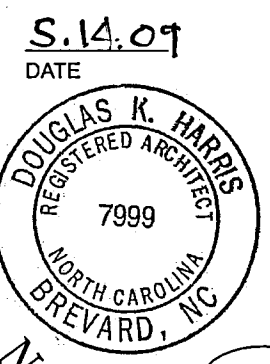
Robert L. Hafler
 ROBERT L. HAFLER
 PROFESSIONAL LAND SURVEYOR
 L-2975



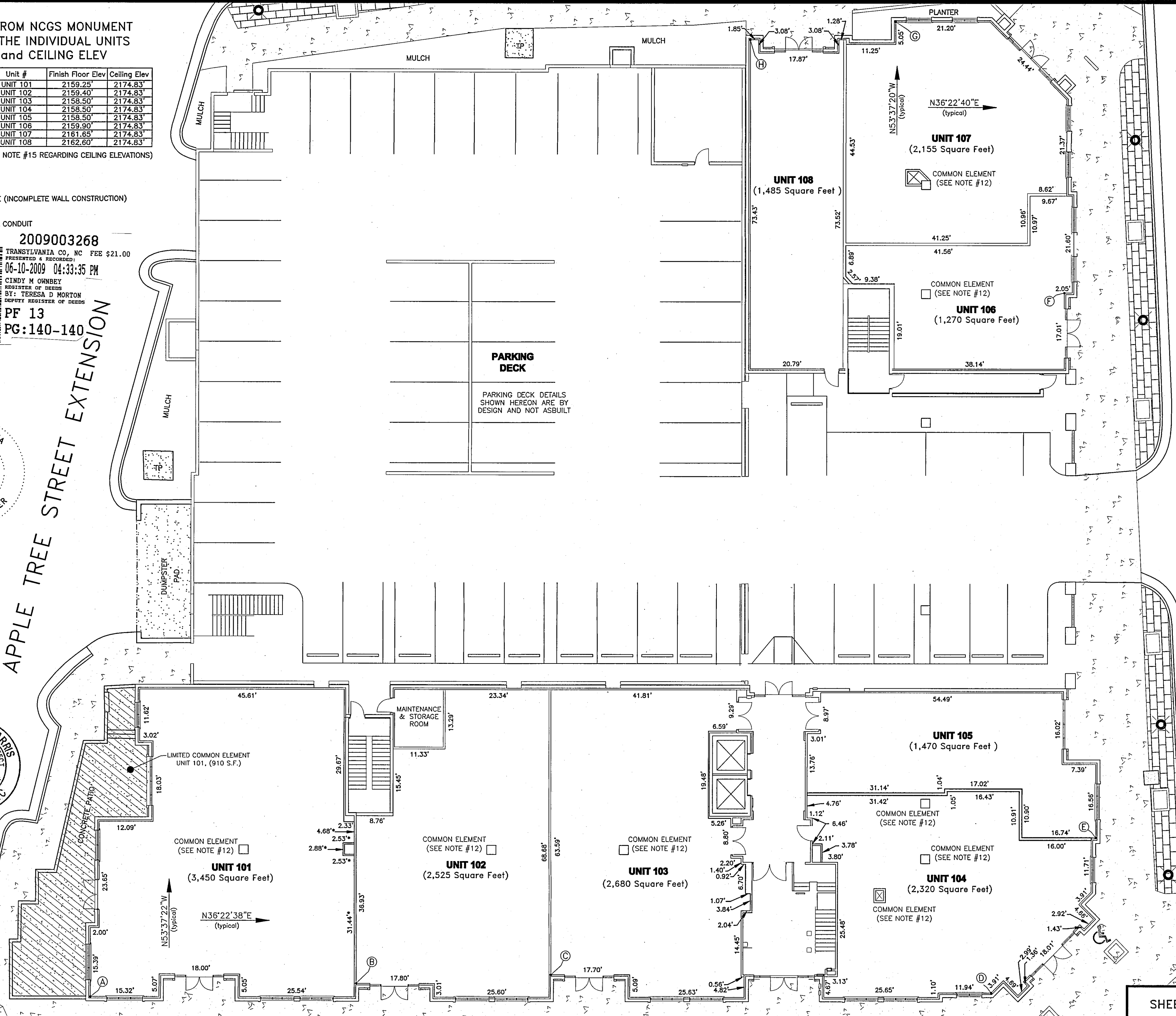
ARCHITECT STATEMENT

- 1) THESE DRAWINGS ARE BASED IN PART UPON THE REPRESENTATIONS OF OTHERS AND ARE NOT FOR BIDDING, CONSTRUCTION OR PERMITTING PURPOSES.
- 2) BASE BUILDING PLANS ARE COPIED FROM CONSTRUCTION DOCUMENTS PREPARED AS PART OF BASE BUILDING CONSTRUCTION BY CALLOWAY JOHNSON, MOORE & WEST, ARCHITECTS OF RECORD.
- 3) I HEREBY CERTIFY THAT THESE PLANS FULLY AND ACCURATELY DEPICT THE LAYOUT, LOCATION, FLOOR ELEVATIONS, UNIT NUMBERS, AND DIMENSIONS OF THE UNITS AS BUILT.

Douglas K. Harris
 DOUGLAS K. HARRIS
 REGISTERED ARCHITECT 7999



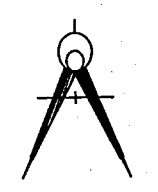
APPLE TREE STREET EXTENSION



FRENCH BROAD STREET

SHEET 2 of 6

PREPARED BY
HAFLER LAND SURVEYING
 435 S. CALDWELL STREET
 BREVARD, NORTH CAROLINA 28712
 (828) 884-7168
 FAX (828) 884-8646



Property Situate in
 CITY OF BREVARD
 BREVARD TOWNSHIP
 TRANSYLVANIA COUNTY
 NORTH CAROLINA

FINAL PLAT
 of the
FRENCH BROAD PLACE
 CONDOMINIUMS (1st Floor)

DATE Revised: April 20, 2009
 MARCH 31, 2009

FIELD RECORDS
 DATA COLLECTOR

15 0 15 30 45
 GRAPHIC SCALE - FEET WRITTEN SCALE: 1"=15'

DRAWING
 1st FLOOR HLS CondoDocs
 COORDINATE FILE
 PN07003.crd
 PROJECT NUMBER
 PN09004