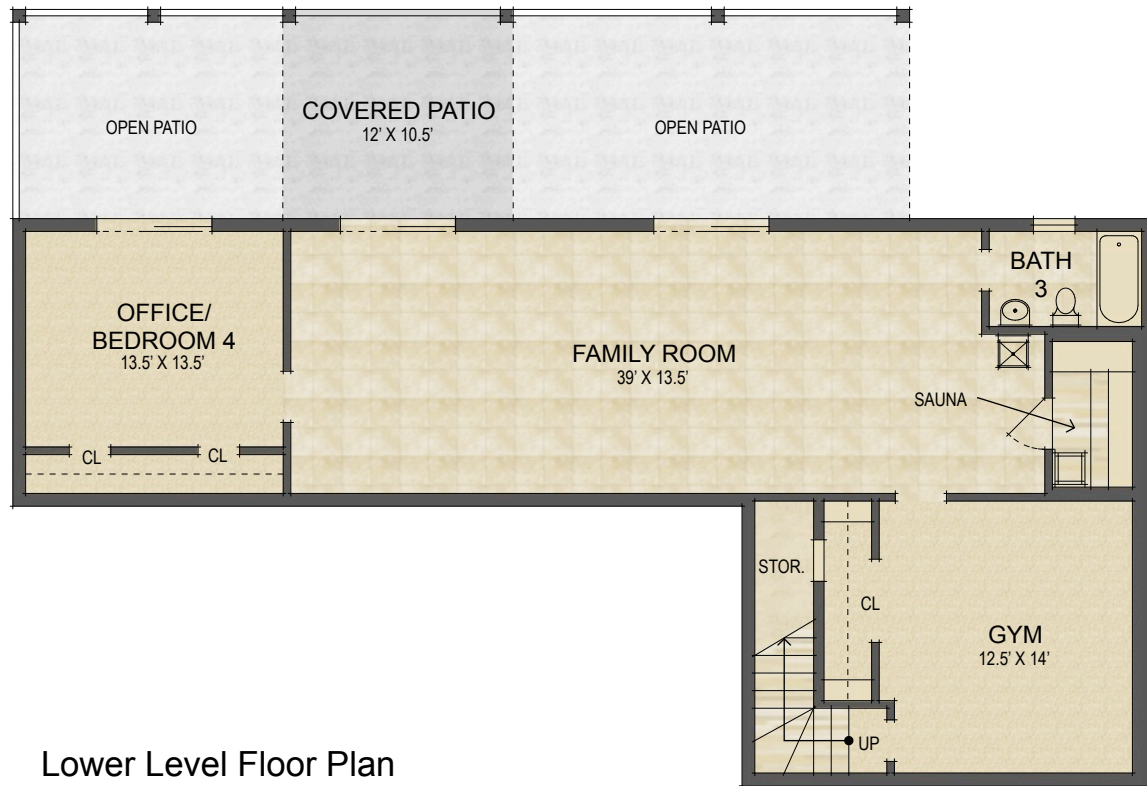


407 Usdasdi Drive
Brevard, NC

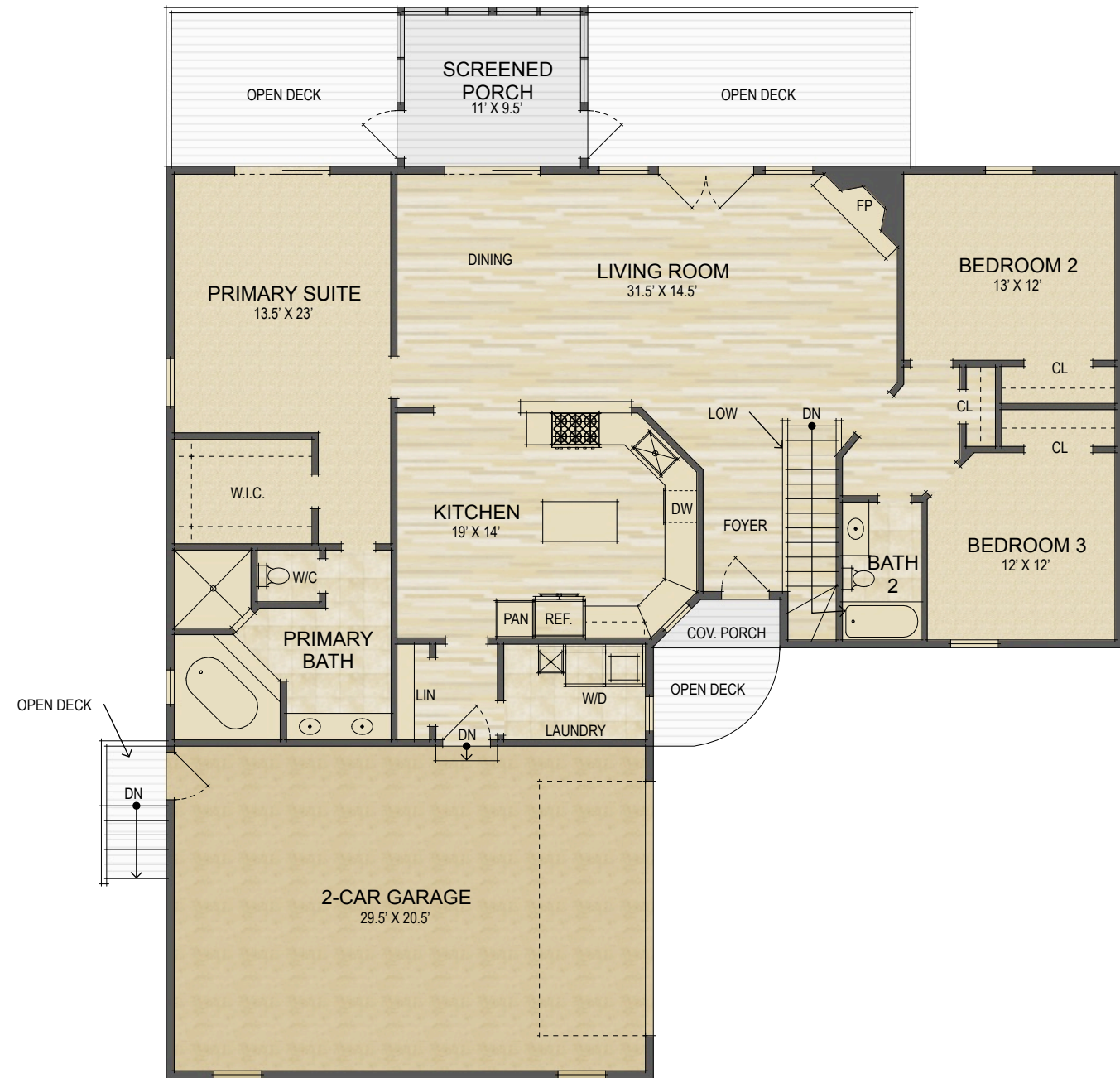
MAIN LEVEL LIVING SPACE: 1,993 SQ. FT.
BELOW GRADE LIVING SPACE: 1,192 SQ. FT.
TOTAL HEATED LIVING SPACE: 3,185 SQ. FT.

2-CAR GARAGE: 641 SQ. FT.
COVERED/SCREENED PORCH: 270 SQ. FT.
TOTAL UNDER ROOF: 4,096 SQ. FT.

OPEN DECKS: 787 SQ. FT.



Lower Level Floor Plan



Main Level Floor Plan

- HEATED LIVING SPACE
- UNHEATED/UNFINISHED/*BONUS SPACE
- COVERED PORCH
- UNCOVERED DECK/PATIO

NOTES:
* - LIVING SPACE REQUIRES A MIN. OF 7'-0" CEILING HEIGHT (5'-0" BELOW A SLOPED CEILING, FINISHED SURFACES, HEATED SPACE, & DIRECT CONNECTION WITH OTHER LIVING SPACE. BONUS SPACE SHOWN MEETS SOME BUT NOT ALL OF THESE QUALIFICATIONS
1. MEASUREMENTS WERE OBTAINED VIA THE NORTH CAROLINA REAL ESTATE COMMISSION GUIDELINES.
2. DIMENSIONS ARE ROUNDED TO THE NEAREST 1/2 FOOT AND ARE APPROXIMATE.
3. INFORMATION WITHIN THESE DRAWINGS ARE INTENDED SOLELY FOR THE USE OF REALTY MARKETING. NOT FOR CONSTRUCTION.
4. FOR MORE INFORMATION REGARDING MEASUREMENTS, MARKETING FLOOR PLANS, OR REMODEL DESIGN & CONSULTING, CONTACT WES HOGAN AT:
FeaturedListingsWNC@gmail.com OR 828.577.191