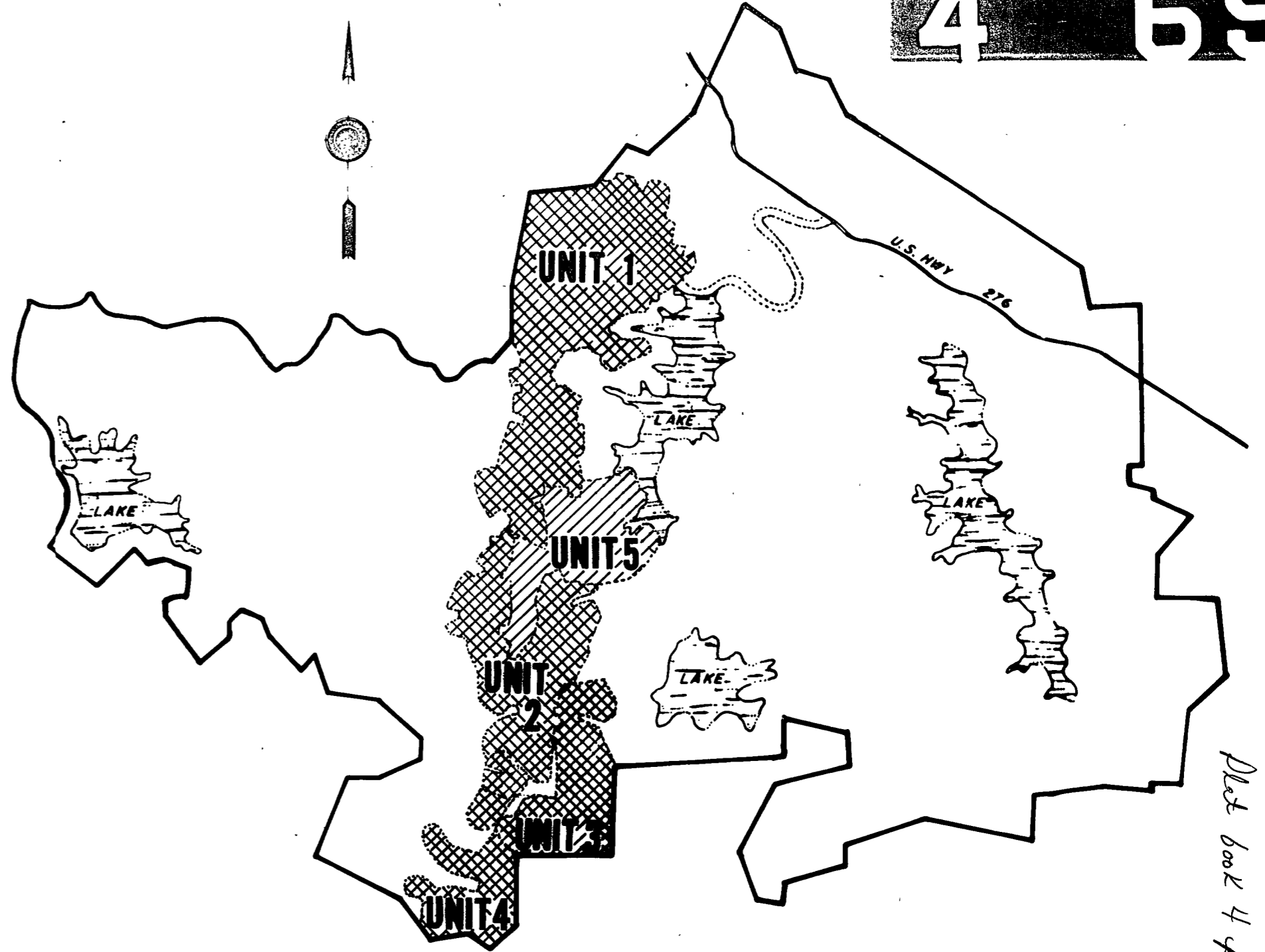


VICINITY MAP  
SCALE IN MILES



LOCATION MAP  
1 INCH EQUALS 2,000 FEET

Plot book 4 page 65

465

I, F. Richard Quible, CERTIFY THAT THIS MAP WAS DRAWN UNDER MY SUPERVISION FROM AN ACTUAL SURVEY MADE UNDER MY SUPERVISION, THAT THE ERROR OF CLOSURE AS CALCULATED BY LATITUDES AND DEPARTURES IS LESS THAN 1:5000, AND THAT THIS MAP WAS PREPARED IN ACCORDANCE WITH G.S. 47-30 AS AMENDED.

WITNESS MY HAND AND SEAL THIS 13<sup>th</sup> DAY OF Nov., A. D., 1971.

*F. Richard Quible*  
REGISTERED LAND SURVEYOR  
REGISTRATION NO. 1-1157

I, Sandra S. Poole, A NOTARY PUBLIC IN AND FOR Mecklenburg Co., Va. DO HEREBY CERTIFY THAT F. Richard Quible PERSONALLY APPEARED BEFORE ME THIS DAY AND BEING DULY SWORN, ACKNOWLEDGES THAT THE FOREGOING CERTIFICATE WAS EXECUTED BY HIM.

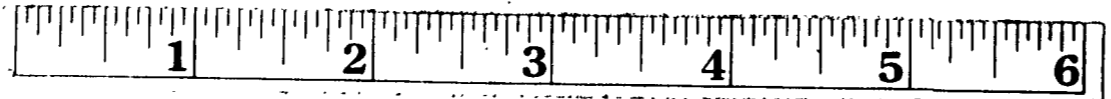
WITNESS MY HAND AND SEAL THIS 13<sup>th</sup> DAY OF Nov., A. D., 1971.

*Sandra S. Poole*  
NOTARY PUBLIC  
MY COMMISSION EXPIRES 7-23-73

STATE OF NORTH CAROLINA  
COUNTY OF TRANSYLVANIA

THE FOREGOING CERTIFICATES OF F. Richard Quible, P. E. AND REGISTERED LAND SURVEYOR AND Sandra S. Poole, NOTARY PUBLIC ARE CERTIFIED TO BE CORRECT. THIS INSTRUMENT WAS PREPARED FOR REGISTRATION AND RECORDED IN THIS OFFICE IN PLAT BOOK 65-A-C, THIS 13<sup>th</sup> DAY OF Nov., AT 4:30 O'CLOCK P. M., 1971.

*Fred H. Small*  
REGISTER OF DEEDS



THE LANDS DEPICTED AND SHOWN ON THIS PLAT ARE SUBJECT TO THE PROVISIONS OF THE DECLARATION OF RESTRICTIVE COVENANTS FOR CONNESTEE FALLS RECORDED WITH THE RECORDER OF TRANSYLVANIA COUNTY OF NORTH CAROLINA ON THE 4TH DAY OF JUNE, 1971, IN THE DEED BOOK 189, PAGE 443, ET. SEQ., AS AMENDED AND SUPPLEMENTAL DECLARATION OF RESTRICTIVE COVENANTS FOR UNIT 5 RECORDED IN THE OFFICE OF THE RECORDER OF TRANSYLVANIA COUNTY OF NORTH CAROLINA IN DEED BOOK 47 PAGE         .

NOTES

- CONNESTEE FALLS DEVELOPMENT CORPORATION RESERVES RIGHTS OF WAY AND EASEMENTS FOR WATER, GAS, SEWER, AND DRAINAGE PIPES AND FOR POLES AND OVERHEAD AND UNDERGROUND WIRES AND CONDUITS FOR ELECTRIC AND TELEPHONE SERVICES, TOGETHER WITH ANY AND ALL APPURTENANCES APPERTAINING THERETO, ON OVER, AND ACROSS EACH OF THE LOTS SHOWN HEREON, SAID EASEMENTS TO BE STRIPS OF LAND 3 FEET IN WIDTH CONTIGUOUS TO THE SIDE AND REAR LINES OF EACH LOT.
- CONNESTEE FALLS DEVELOPMENT CORPORATION FURTHER RESERVES THE RIGHT TO SUBSEQUENTLY GRANT RIGHTS OF WAY AND EASEMENTS OVER THE ABOVE DESCRIBED STRIPS FOR THE ABOVE STATED PURPOSES TO ANY PUBLIC AGENCIES OR UTILITY FIRMS OR TO GRANT ITS RIGHTS IN SUCH EASEMENTS AND RIGHTS OF WAY TO A GROUP COMPOSED OF SUBSEQUENT OWNERS OF THE LOTS SHOWN HEREON.
- ALL BEARINGS ARE BASED ON THE NORTH CAROLINA COORDINATE SYSTEM.
- CURVES AT PROPERTY LINE INTERSECTIONS HAVE A RADIUS OF 20.00' AND ARC LENGTH OF 31.42' UNLESS OTHERWISE NOTED.
- LOT DIMENSIONS SHOWN ON CURVES ARE ARC LENGTH.
- IRON RODS AT ALL CORNERS UNLESS OTHERWISE NOTED.
- CUL-DE-SACS HAVE A RADIUS OF 45.00' UNLESS OTHERWISE NOTED.
- ALL FIGURES IN PARENTHESIS ( ) DENOTE LOT SQUARE FOOTAGE.



# Connestee Falls

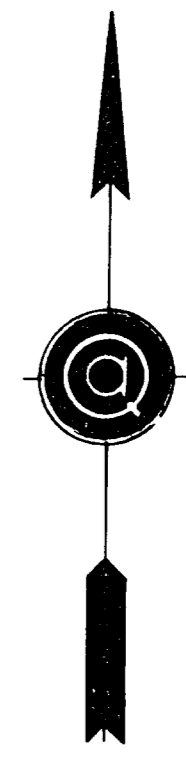
DUNNS ROCK & EASTATOE TOWNSHIPS,  
TRANSYLVANIA COUNTY, NORTH CAROLINA  
CONNESTEE FALLS DEVELOPMENT CORPORATION

A DIVISION OF REALTEC INCORPORATED  
a subsidiary of  
Certain-teed  
Products Corporation

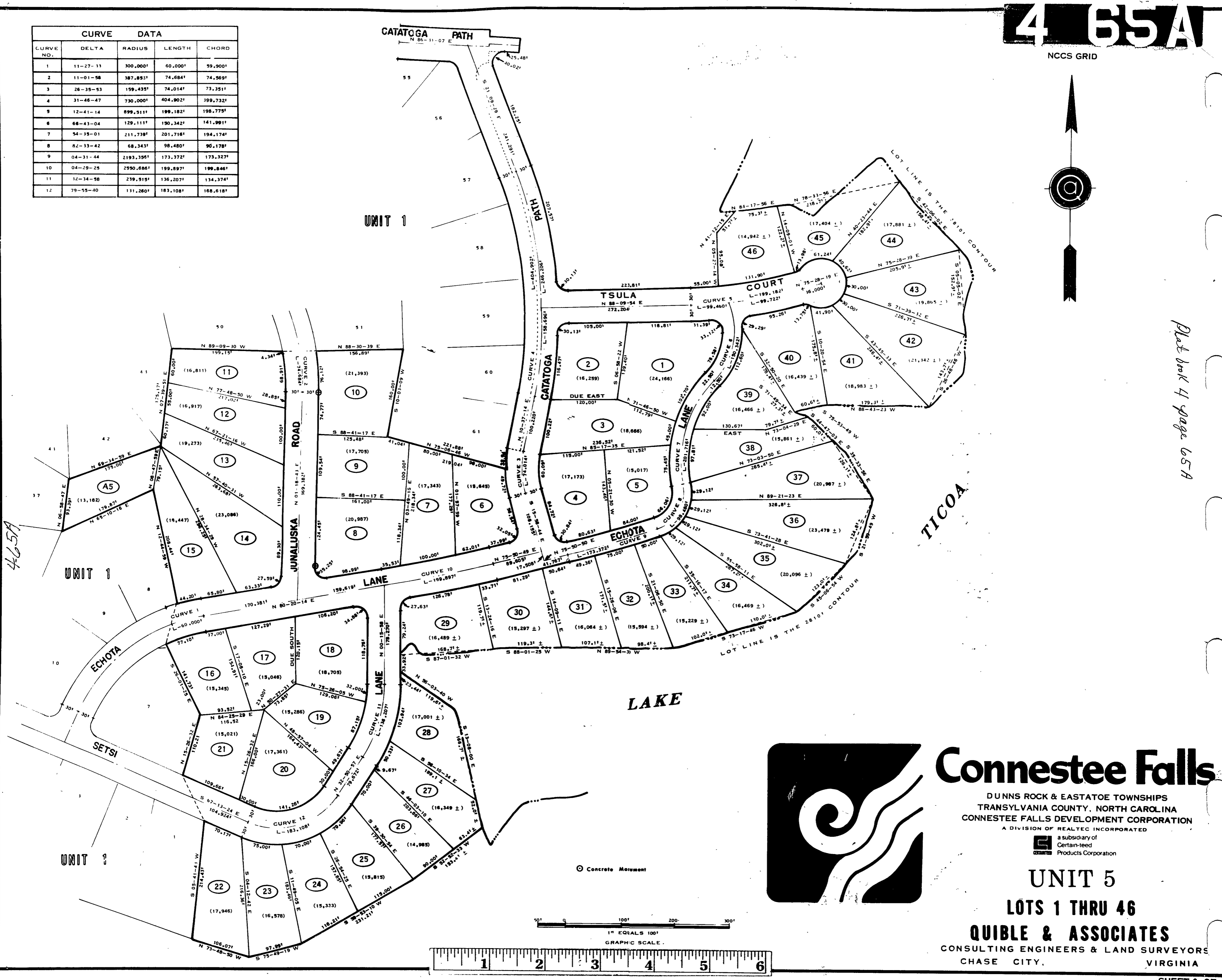
## UNIT 5

LOTS 1 THRU 107  
**QUIBLE & ASSOCIATES**  
CONSULTING ENGINEERS & LAND SURVEYORS  
CHASE CITY, VIRGINIA

NCCS GRID



CURVE		DATA		
CURVE NO.	DELTA	RADIUS	LENGTH	CHORD
1	11-27-13	300,000'	60,000'	59,900'
2	11-01-58	387,852'	74,684'	74,569'
3	26-35-53	159,435'	74,014'	73,351'
4	31-46-47	730,000'	404,902'	399,732'
5	12-41-14	899,511'	199,182'	198,775'
6	66-43-04	129,111'	190,342'	141,991'
7	54-35-01	211,739'	201,716'	194,174'
8	82-13-42	68,343'	98,480'	90,178'
9	04-31-44	2193,395'	173,372'	173,327'
10	04-29-25	2950,686'	199,897'	199,846'
11	12-34-58	239,515'	136,207'	134,374'
12	79-55-40	131,280'	183,108'	168,618'



Plot back 4 page 65A



## Connestee Falls

DUNNS ROCK & EASTATOE TOWNSHIPS  
 TRANSYLVANIA COUNTY, NORTH CAROLINA  
 CONNESTEE FALLS DEVELOPMENT CORPORATION

A DIVISION OF REALTEC INCORPORATED  
 a subsidiary of  
 Certain-teed  
 Products Corporation

### UNIT 5

LOTS 1 THRU 46

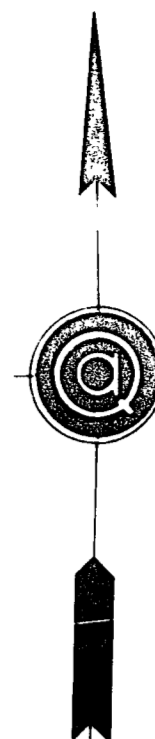
### QUIBLE & ASSOCIATES

CONSULTING ENGINEERS & LAND SURVEYORS  
 CHASE CITY, VIRGINIA

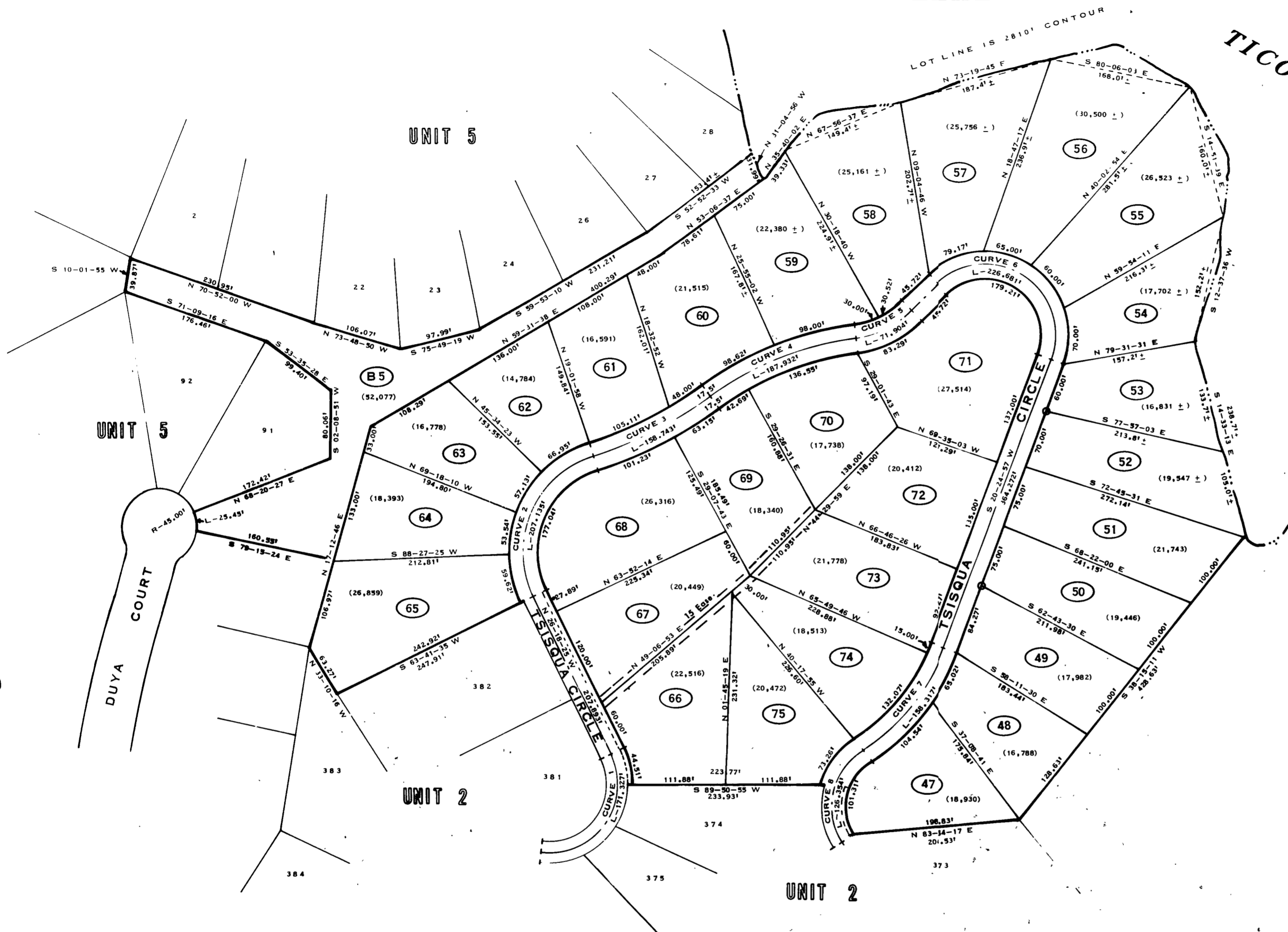
LAKE

TICOA

UNIT 5



NCCS GRID

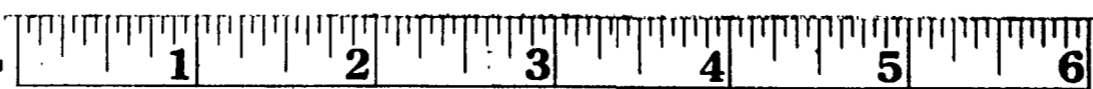


465B

Sheet 4 page 65B

CURVE DATA				
CURVE NO.	DELTA	RADIUS	LENGTH	CHORD
1	122-42-14	80,000'	171,327'	140,413'
2	98-32-35	120,434'	207,135'	182,532'
3	18-27-18	492,838'	158,743'	158,058'
4	28-27-13	378,431'	187,932'	188,007'
5	37-16-07	110,544'	71,904'	70,643'
6	155-26-58	83,951'	226,681'	183,281'
7	36-49-02	246,377'	158,317'	159,607'
8	90-29-41	80,000'	128,354'	113,624'

○ Concrete Monument



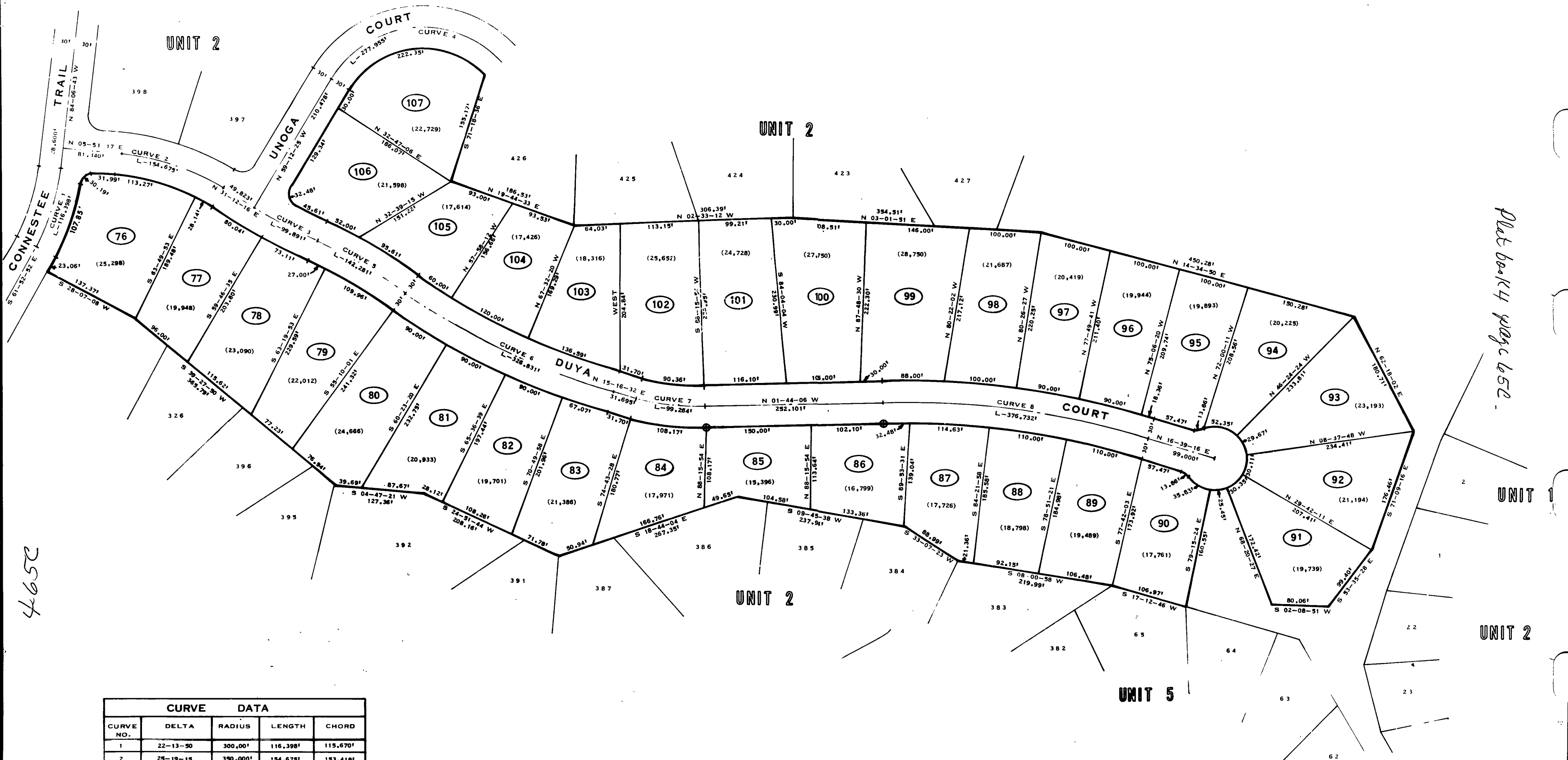
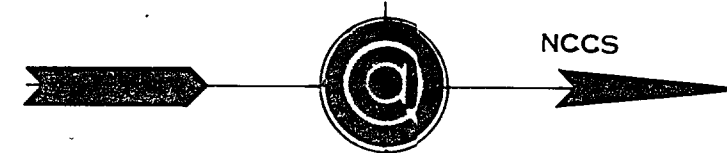
## Connestee Falls

DUNNS ROCK & EASTATOE TOWNSHIPS  
 TRANSYLVANIA COUNTY, NORTH CAROLINA  
 CONNESTEE FALLS DEVELOPMENT CORPORATION

A DIVISION OF REALTEC INCORPORATED  
 a subsidiary of  
 Certain-teed  
 Products Corporation

### UNIT 5

**LOTS 47 THRU 75**  
**QUIBLE & ASSOCIATES**  
 CONSULTING ENGINEERS & LAND SURVEYORS  
 CHASE CITY, VIRGINIA

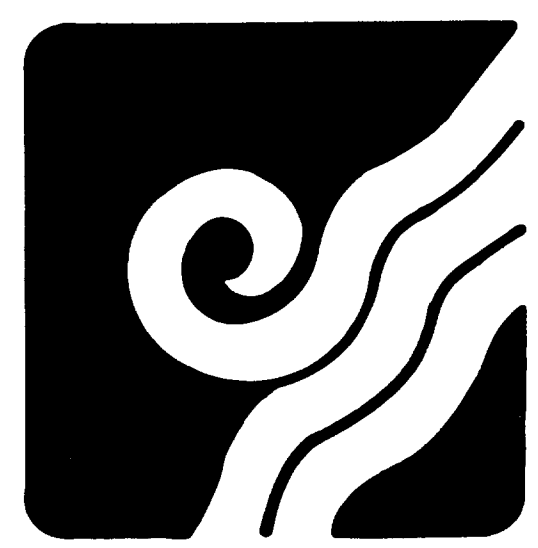
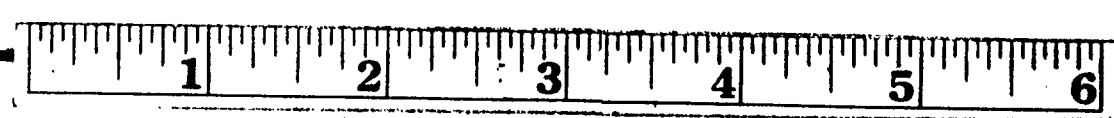


46514

Plot book 4 page 652.

CURVE DATA				
CURVE NO.	DELTA	RADIUS	LENGTH	CHORD
1	22-13-30	300.00'	116.398'	115.670'
2	28-19-15	390.000'	154.675'	153.419'
3	06-32-39	874.572'	99.891'	99.837'
4	106-10-16	150.000'	277.955'	239.850'
5	10-10-09	801.651'	142.281'	142.093'
6	19-33-27	957.487'	326.831'	325.247'
7	17-00-38	334.347'	99.264'	98.901'
8	18-23-22	1,173.781'	376.732'	375.117'

⊙ Concrete Monument



## Connestee Falls

DUNNS ROCK & EASTATOE TOWNSHIPS  
 TRANSYLVANIA COUNTY, NORTH CAROLINA  
 CONNESTEE FALLS DEVELOPMENT CORPORATION

A DIVISION OF REALTEC INCORPORATED  
 a subsidiary of  
 Certain-lead  
 Products Corporation

**UNIT 5**  
**LOTS 76 THRU 107**

**QUIBLE & ASSOCIATES**  
 CONSULTING ENGINEERS & LAND SURVEYORS  
 CHASE CITY, VIRGINIA