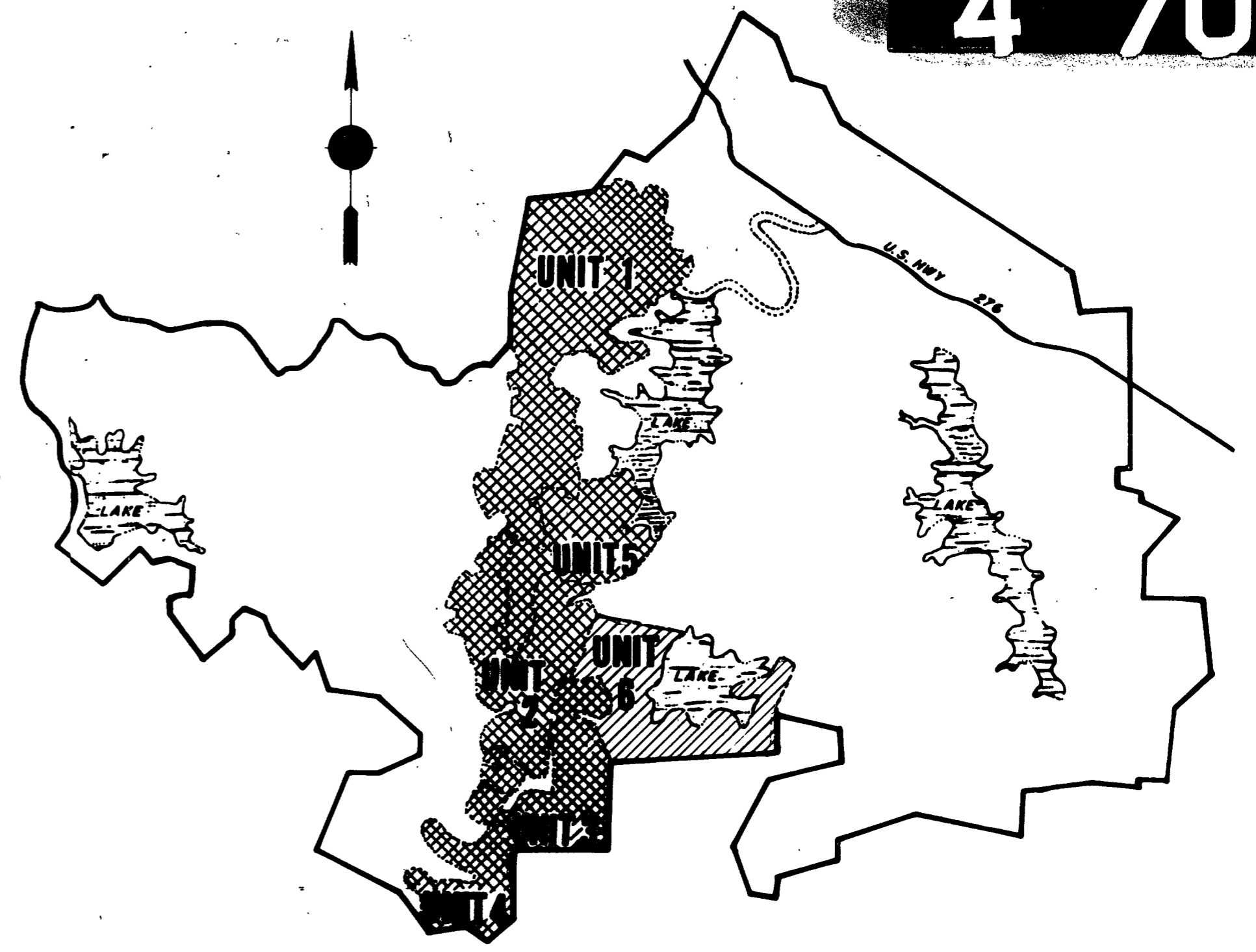


VICINITY MAP  
SCALE IN MILES  
0 1 2 3 4



LOCATION MAP  
1 INCH EQUALS 2,000 FEET

I, F. Richard Quible, CERTIFY THAT THIS MAP WAS DRAWN UNDER MY SUPERVISION FROM AN ACTUAL SURVEY MADE UNDER MY SUPERVISION, THAT THE ERROR OF CLOSURE AS CALCULATED BY LATITUDES AND DEPARTURES IS LESS THAN 1:5000, AND THAT THIS MAP WAS PREPARED IN ACCORDANCE WITH G. S. 47-20 AS AMENDED.

WITNESS MY HAND AND SEAL THIS 14<sup>th</sup> DAY OF Jan., A. D., 1972.

*F. Richard Quible*  
REGISTERED LAND SURVEYOR  
REGISTRATION NO. L-1157

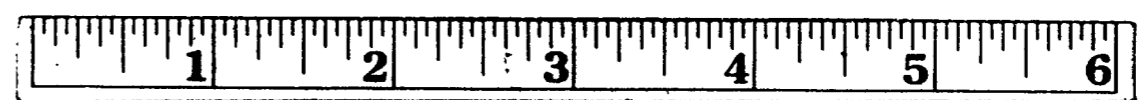
I, Sandra S. Poole, A NOTARY PUBLIC IN AND FOR Mecklenburg Co., Va. DO HEREBY CERTIFY THAT F. Richard Quible PERSONALLY APPEARED BEFORE ME THIS DAY AND BEING DULY SWORN, ACKNOWLEDGES THAT THE FOREGOING CERTIFICATE WAS EXECUTED BY HIM.

WITNESS MY HAND AND SEAL THIS 14<sup>th</sup> DAY OF Jan., A. D., 1972.

*Sandra S. Poole*  
NOTARY PUBLIC  
MY COMMISSION EXPIRES 7-29-73

STATE OF NORTH CAROLINA  
COUNTY OF TRANSYLVANIA  
THE FOREGOING CERTIFICATES OF F. Richard Quible, P. E. AND REGISTERED LAND SURVEYOR AND Sandra S. Poole, NOTARY PUBLIC ARE CERTIFIED TO BE CORRECT. THIS INSTRUMENT WAS PRESENTED FOR REGISTRATION AND RECORDED IN THIS OFFICE IN PLAT BOOK PAGE 47, THIS 14<sup>th</sup> DAY OF January, AT 11:00 O'CLOCK P. M., 1972.  
70-70A-70B-70C

*Irrel H. Israel*  
REGISTER OF DEEDS  
By *Vickie S. Edwards*  
Deputy



PART 1 of 4

THE LANDS DEPICTED AND SHOWN ON THIS PLAT ARE SUBJECT TO THE PROVISIONS OF THE DECLARATION OF RESTRICTIVE COVENANTS FOR CONNESTEE FALLS RECORDED WITH THE RECORDER OF TRANSYLVANIA COUNTY OF NORTH CAROLINA ON THE 4TH DAY OF JUNE, 1971, IN THE DEED BOOK 189, PAGE 443, ET. SEQ., AS AMENDED AND SUPPLEMENTAL DECLARATION OF RESTRICTIVE COVENANTS FOR UNIT 6 RECORDED IN THE OFFICE OF THE RECORDER OF TRANSYLVANIA COUNTY OF NORTH CAROLINA IN DEED BOOK 192, PAGE 492.

NOTES

CONNESTEE FALLS DEVELOPMENT CORPORATION RESERVES RIGHTS OF WAY AND EASEMENTS FOR WATER, GAS, SEWER, AND DRAINAGE PIPES AND FOR POLES AND OVERHEAD AND UNDERGROUND WIRES AND CONDUITS FOR ELECTRIC AND TELEPHONE SERVICES, TOGETHER WITH ANY AND ALL APPURTENANCES APPERTAINING THERETO, ON OVER, AND ACROSS EACH OF THE LOTS SHOWN HEREON, SAID EASEMENTS TO BE STRIPS OF LAND 5 FEET IN WIDTH CONTIGUOUS TO THE SIDE AND REAR LINES OF EACH LOT.

CONNESTEE FALLS DEVELOPMENT CORPORATION FURTHER RESERVES THE RIGHT TO SUBSEQUENTLY GRANT RIGHTS OF WAY AND EASEMENTS OVER THE ABOVE DESCRIBED STRIPS FOR THE ABOVE STATED PURPOSES TO ANY PUBLIC AGENCIES OR UTILITY FIRMS OR TO GRANT ITS RIGHTS IN SUCH EASEMENTS AND RIGHTS OF WAY TO A GROUP COMPOSED OF SUBSEQUENT OWNERS OF THE LOTS SHOWN HEREON.

ALL BEARINGS ARE BASED ON THE NORTH CAROLINA COORDINATE SYSTEM.

CURVES AT PROPERTY LINE INTERSECTIONS HAVE A RADIUS OF 20,000' AND ARC LENGTH OF 31,421' UNLESS OTHERWISE NOTED.

LOT DIMENSIONS SHOWN ON CURVES ARE ARC LENGTH.

IRON RODS AT ALL CORNERS UNLESS OTHERWISE NOTED.

CUL-DE-SACS HAVE A RADIUS OF 45,000' UNLESS OTHERWISE NOTED.

ALL FIGURES IN PARENTHESIS ( ) DENOTE LOT SQUARE FOOTAGE.



# Connestee Falls

DUNNS ROCK & EASTATOE TOWNSHIPS,  
TRANSYLVANIA COUNTY, NORTH CAROLINA  
CONNESTEE FALLS DEVELOPMENT CORPORATION

A DIVISION OF REALTEC INCORPORATED  
a subsidiary of  
Certain-teed  
Products Corporation

## UNIT 6

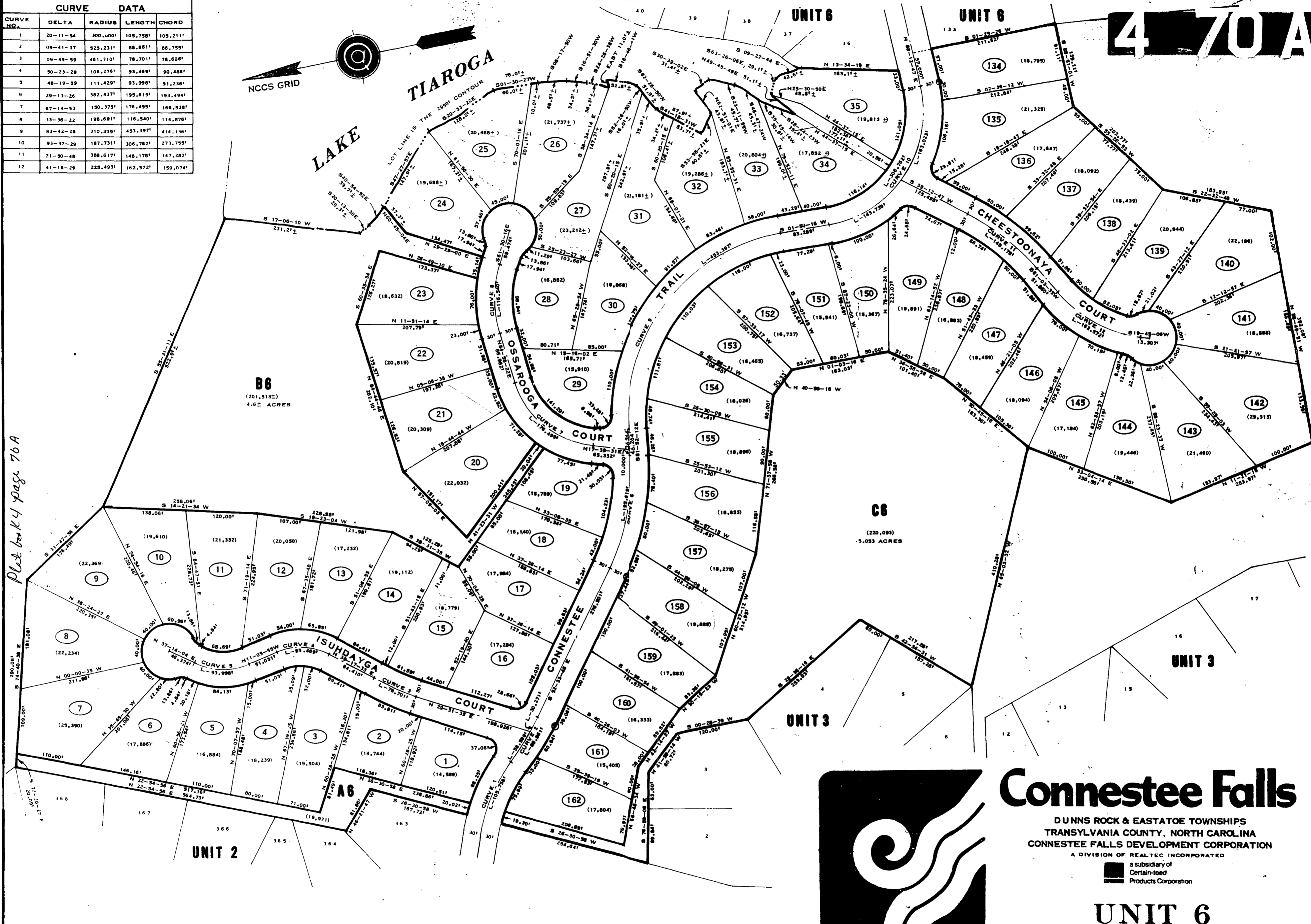
LOTS 1 THRU 162  
**QUIBLE & ASSOCIATES**  
CONSULTING ENGINEERS & LAND SURVEYORS  
CHASE CITY, VIRGINIA



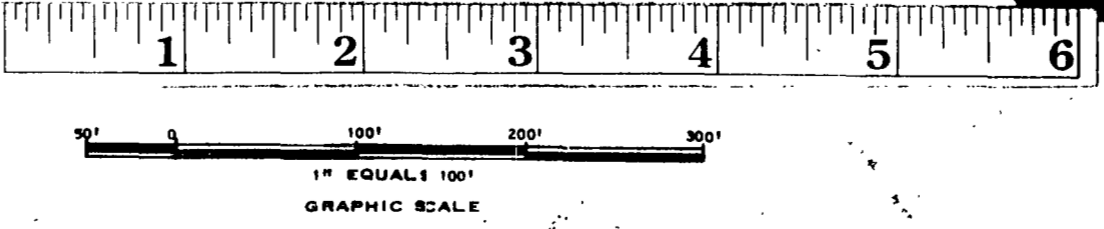
Part book 1 page 70

CURVE DATA				
CURVE NO.	DELTA	RADIUS	LENGTH	CHORD
1	20-11-54	300.000'	105.798'	105.211'
2	09-41-37	525.231'	88.861'	88.755'
3	09-45-59	461.710'	78.701'	78.606'
4	50-23-29	106.276'	93.469'	90.486'
5	48-19-59	111.429'	93.998'	91.236'
6	29-13-26	382.437'	195.619'	193.494'
7	67-14-53	190.375'	176.495'	166.538'
8	33-36-22	198.691'	116.540'	114.876'
9	83-42-28	310.339'	453.397'	414.136'
10	93-37-29	187.731'	306.782'	273.755'
11	21-30-48	388.617'	148.178'	147.282'
12	41-18-29	225.493'	162.572'	159.074'

Plot back 4 pages 70A



⊕ INDICATES CONCRETE MONUMENT



# Connestee Falls

DUNNS ROCK & EASTATOE TOWNSHIPS  
 TRANSYLVANIA COUNTY, NORTH CAROLINA  
 CONNESTEE FALLS DEVELOPMENT CORPORATION  
 A DIVISION OF REALTEC INCORPORATED  
 a subsidiary of  
 Certain-teed  
 Products Corporation

## UNIT 6

LOTS 1-35 & 134-162

### QUIBLE & ASSOCIATES

CONSULTING ENGINEERS & LAND SURVEYORS  
 CHASE CITY, VIRGINIA

# LAKE TIAROGA

NCCS GRID

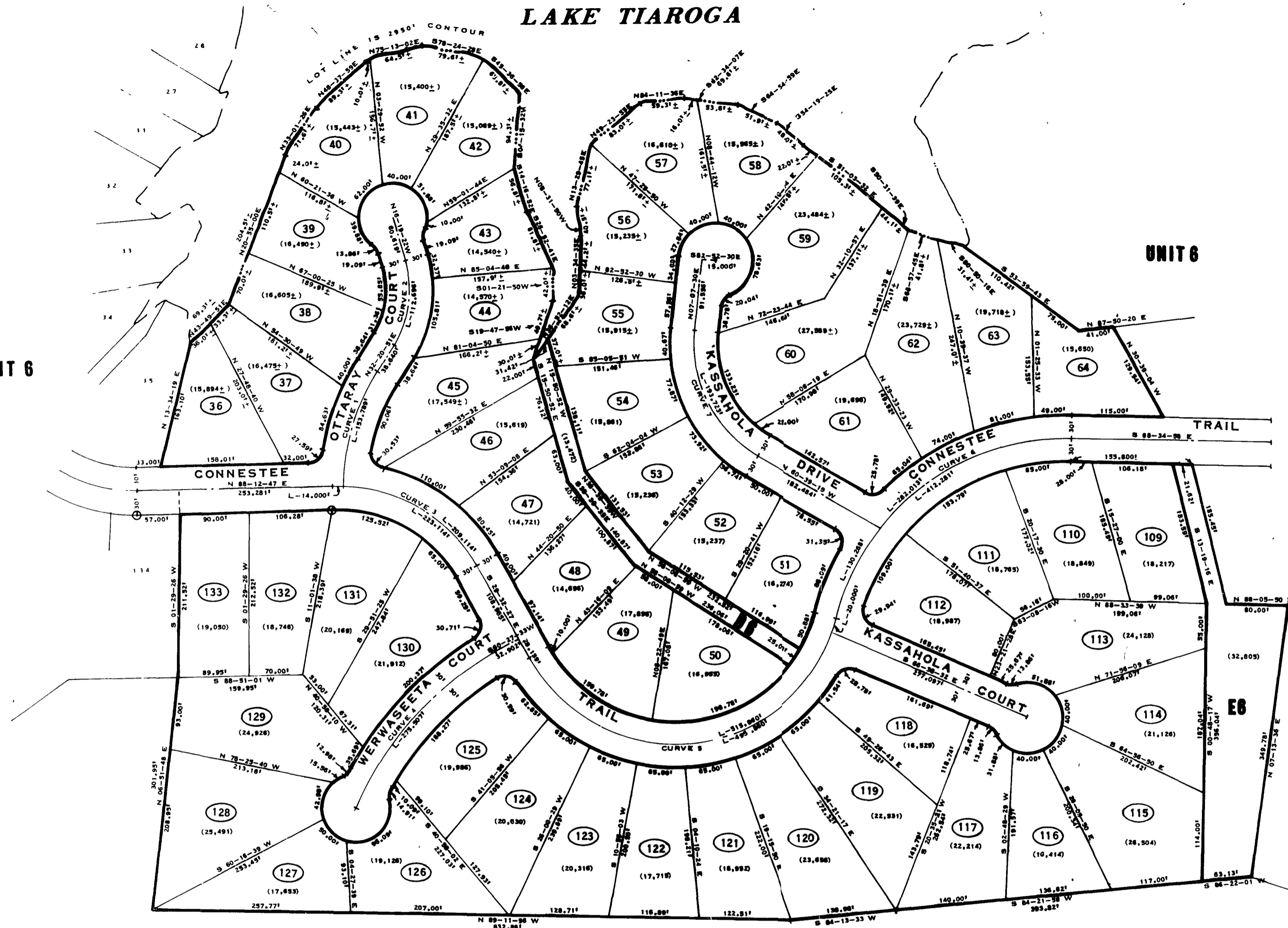


**470**  
**QB**

*Pls look 4 page 708*

UNIT 6

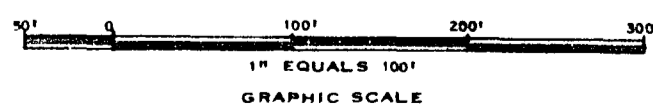
UNIT 6



⊕ - INDICATES CONCRETE MONUMENT

*PART 3 of 4*

CURVE NO.	CURVE DATA			
	DELTA	RADIUS	LENGTH	CHORD
31	39.47	78.288'	153.789'	151.840'
34	30.14	112.667'	112.696'	109.138'
35	14.46	205.370'	223.114'	212.303'
36	18.11	134.823'	275.907'	270.922'
37	20.16	216.789'	515.860'	402.483'
38	17.45	105.605'	412.281'	181.720'
39	4.49	143.757'	193.713'	182.113'



## Connestee Falls

DUNN'S ROCK & EASTATOE TOWNSHIPS  
TRANSYLVANIA COUNTY, NORTH CAROLINA  
CONNESTEE FALLS DEVELOPMENT CORPORATION

A DIVISION OF REALTEC INCORPORATED  
a subsidiary of  
Certain-teed  
Products Corporation

### UNIT 6

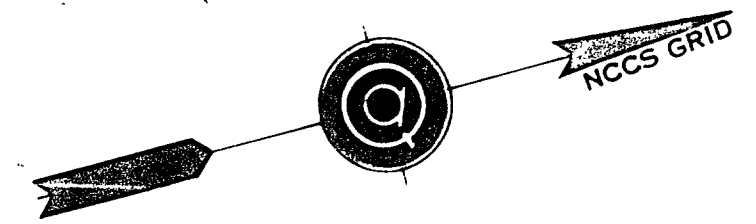
LOTS 36 - 64 & 109 - 133

**QUIBLE & ASSOCIATES**  
CONSULTING ENGINEERS & LAND SURVEYORS  
CHASE CITY, VIRGINIA

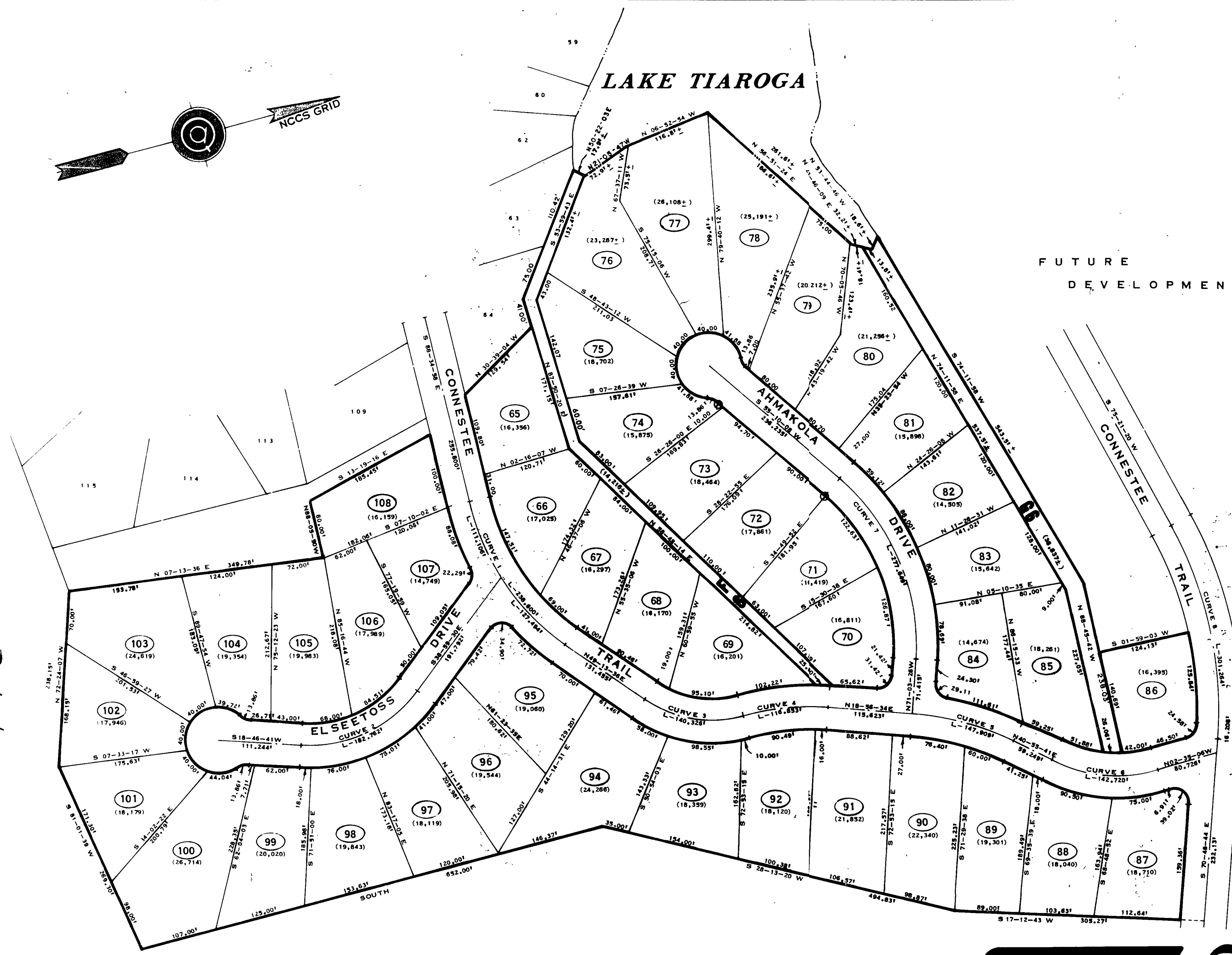
DATE DRAWN - JAN. 13, 1972

SHEET 3 OF 4

# 470C



## LAKE TIAROGA

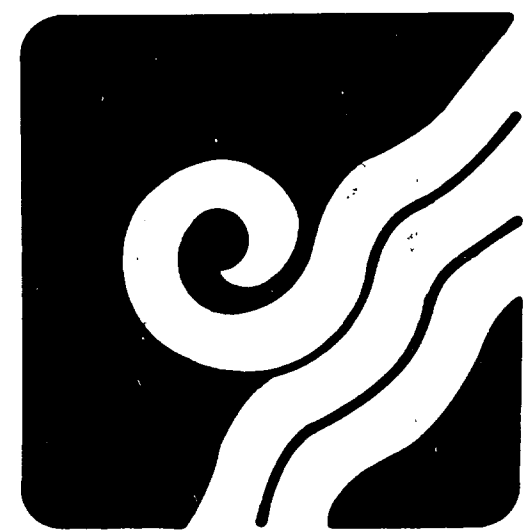
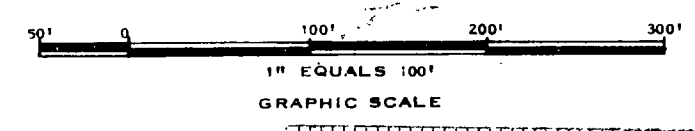


470C

Plot book 4 page 70C

CURVE DATA				
CURVE NO.	DELTA	RADIUS	LENGTH	CHORD
1	42-11-26	324.025'	238.600'	233.246'
2	57-46-11	181.263'	182.762'	175.118'
3	50-04-54	160.539'	140.328'	135.901'
4	19-47-52	338.179'	116.853'	116.273'
5	21-59-07	185.465'	147.909'	147.004'
6	43-30-47	187.927'	142.720'	139.319'
7	53-46-26	295.833'	277.649'	267.970'
8	33-49-56	510.199'	301.264'	296.907'

⊕ - INDICATES CONCRETE MONUMENT



# Connestee Falls

DUNNS ROCK & EASTATOE TOWNSHIPS  
TRANSYLVANIA COUNTY, NORTH CAROLINA  
CONNESTEE FALLS DEVELOPMENT CORPORATION

A DIVISION OF REALTEC INCORPORATED  
a subsidiary of  
Certain-teed  
Products Corporation

## UNIT 6

LOTS 65 THRU 108

### QUIBLE & ASSOCIATES

CONSULTING ENGINEERS & LAND SURVEYORS  
CHASE CITY, VIRGINIA