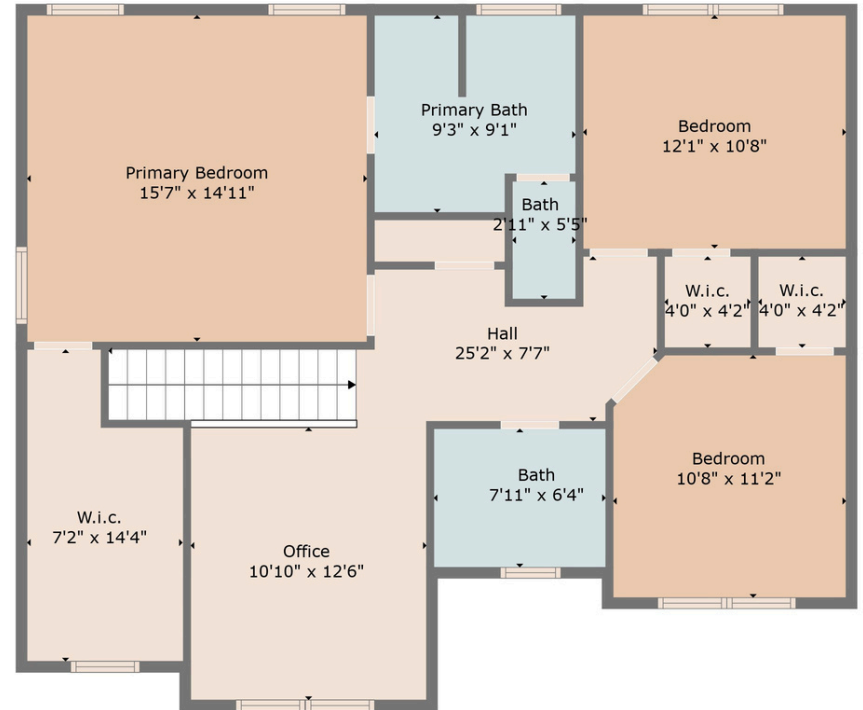
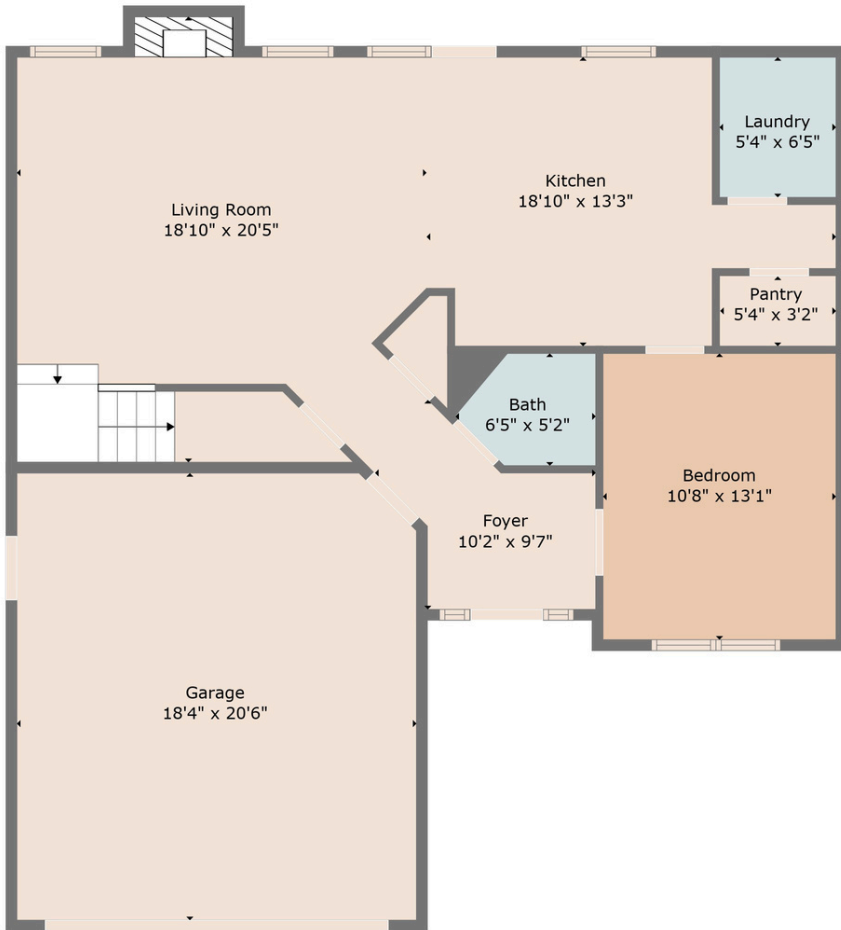


15 Trey-Bourne Drive | Woodfin, NC

INTERNAL MEASUREMENTS



TOTAL: 1911 sq. ft

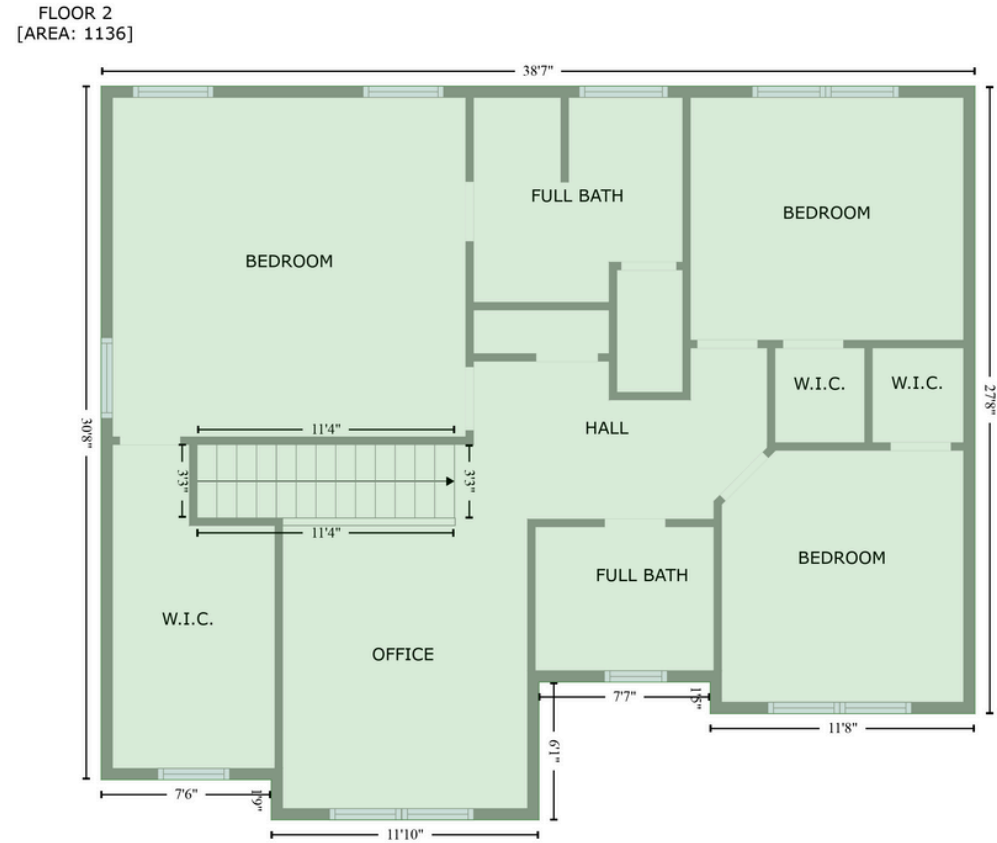
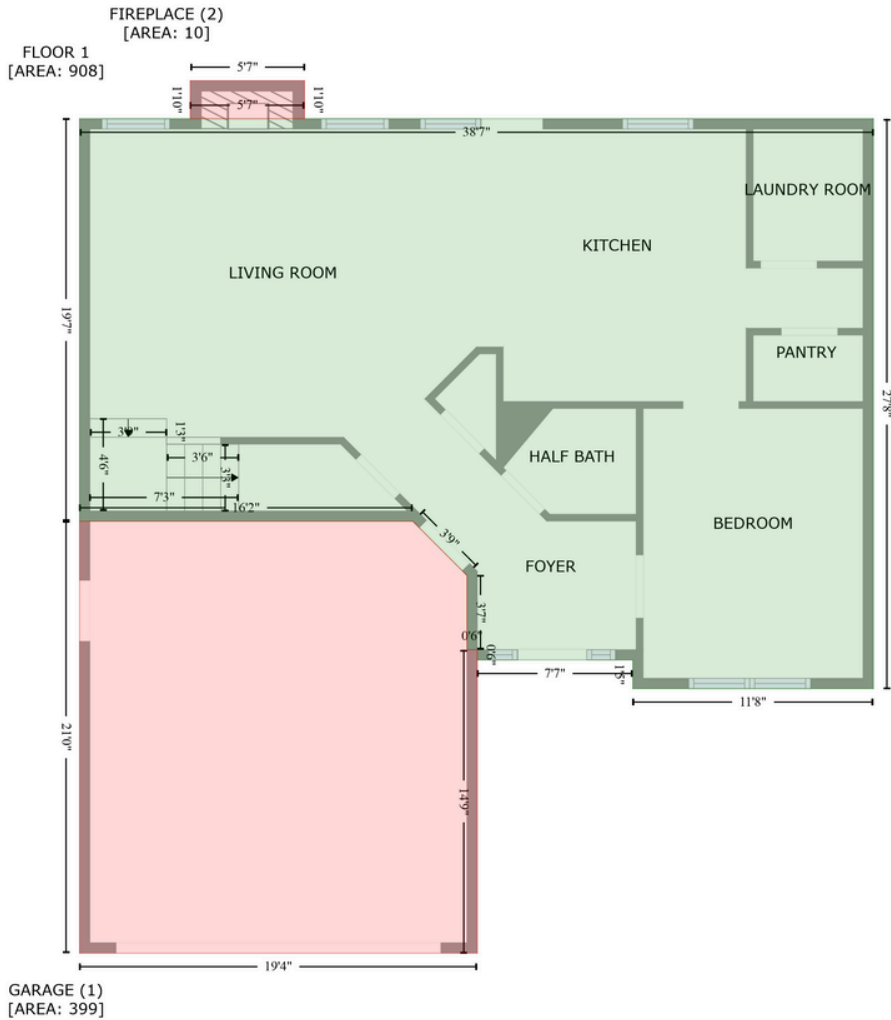
FLOOR 1: 846 sq. ft, FLOOR 2: 1065 sq. ft

EXCLUDED AREAS: GARAGE: 372 sq. ft, FIREPLACE: 6 sq. ft

This floor plan holds ANSI certification and was created by a service professional, not a licensed appraiser. The measurements are computed using CubiCasa Technology, recognized as highly reliable but Not Guaranteed.

15 Trey-Bourne Drive | Woodfin, NC

EXTERNAL MEASUREMENTS



This floor plan holds ANSI certification and was created by a service professional, not a licensed appraiser. The measurements are computed using CubiCasa Technology, recognized as highly reliable but Not Guaranteed.