

*521 Oriole Road, Brevard*

Approximate Total Finished/Heated Living Area:  
1591 Square Feet

\*\*\*\*\*

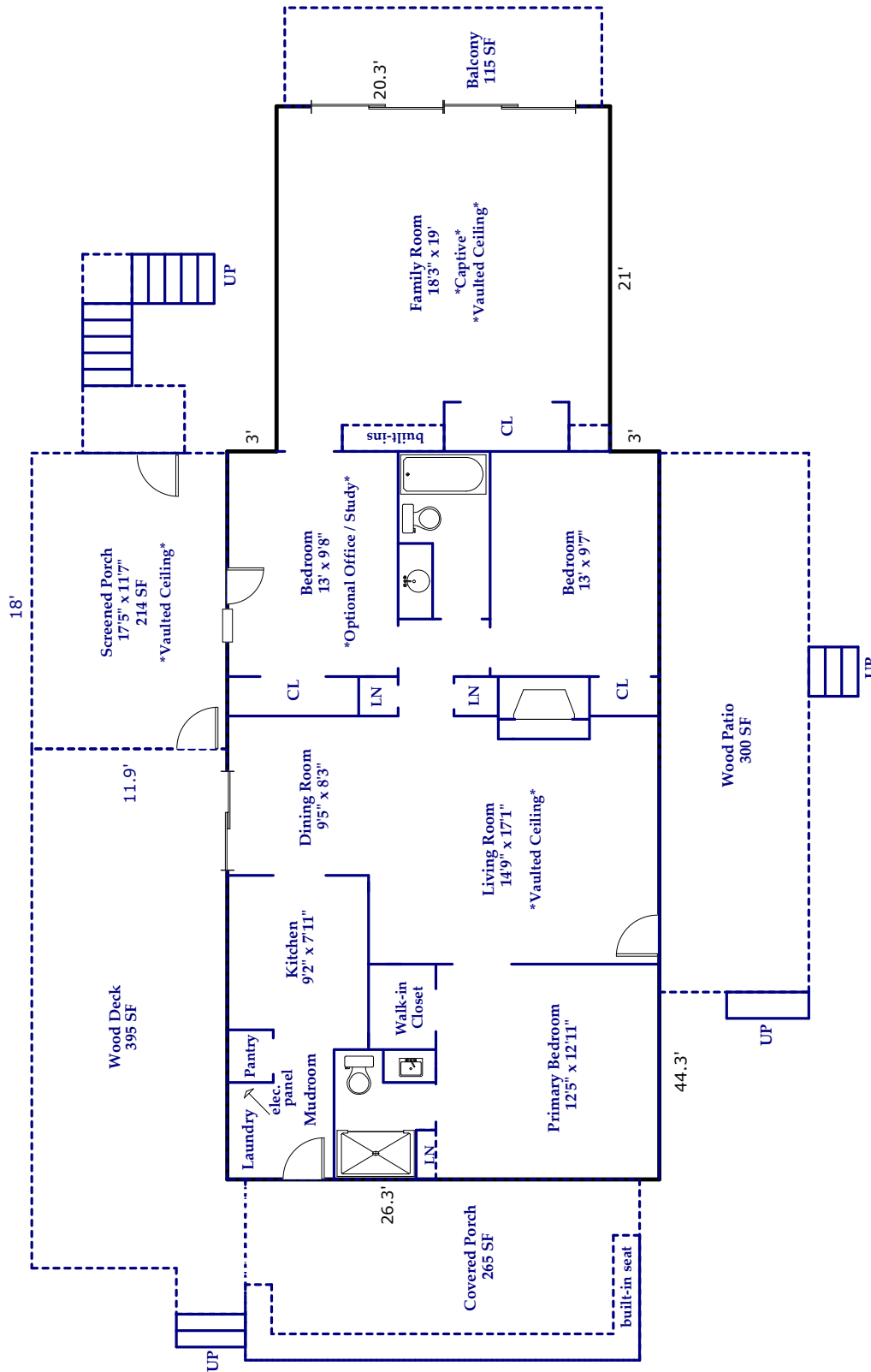
Screened Porch: 214 Square Feet

\*\*\*\*\*

Total Square Footage Under Roof for All Finished/Unfinished & Heated/Unheated Areas:  
1805 Square Feet

Prepared by Judy Brouillette-O'Neil: ProPlans of the Carolinas, LLC<sup>©</sup>  
for Looking Glass Realty LLC

All dimensions are rounded to the nearest .01 and are deemed reliable, but not guaranteed.  
Square Footage Calculations determined following ANSI Standards and NCREC House Measuring Square Footage Guidelines.



**MAIN LIVING AREA**  
1591 Square Feet  
\*Wood Ceilings\*