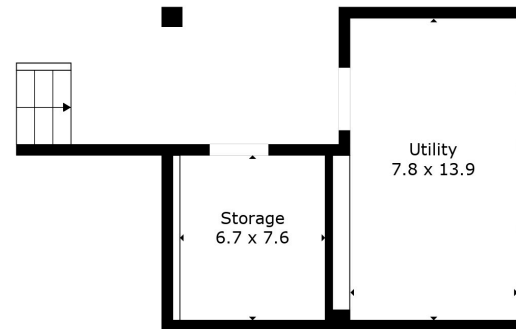


Floor 2

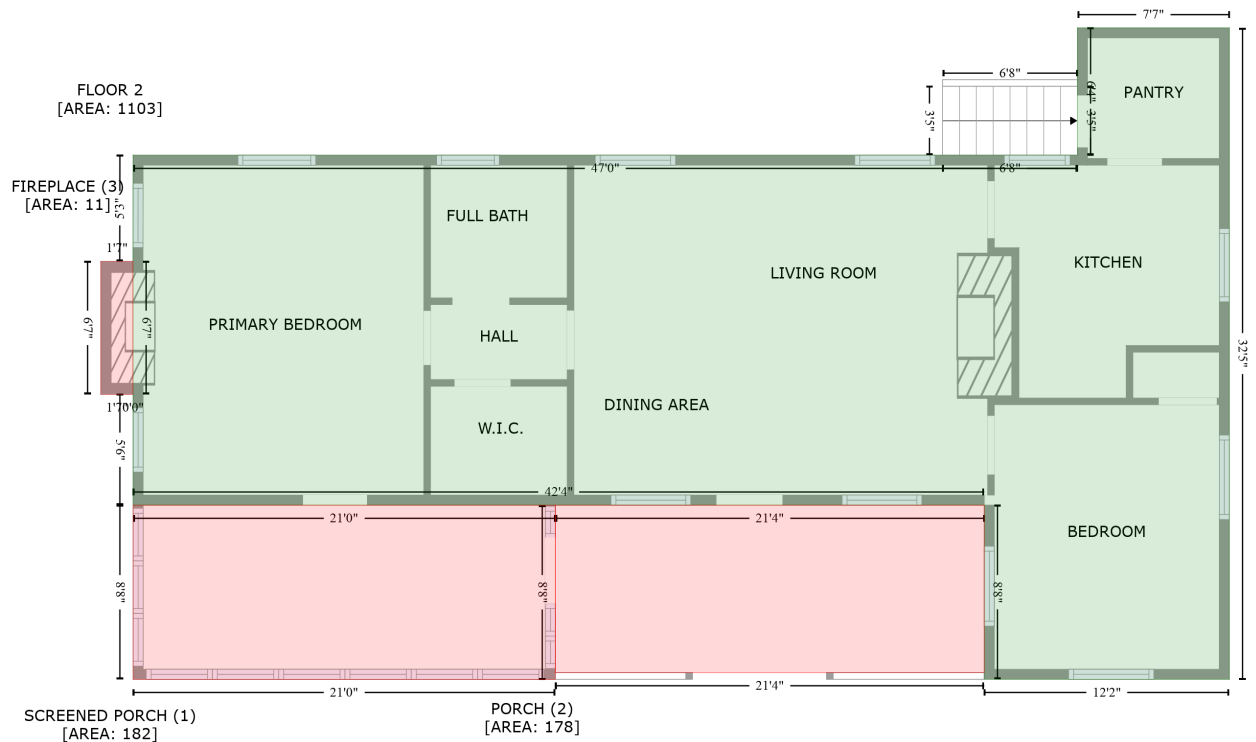


Floor 1



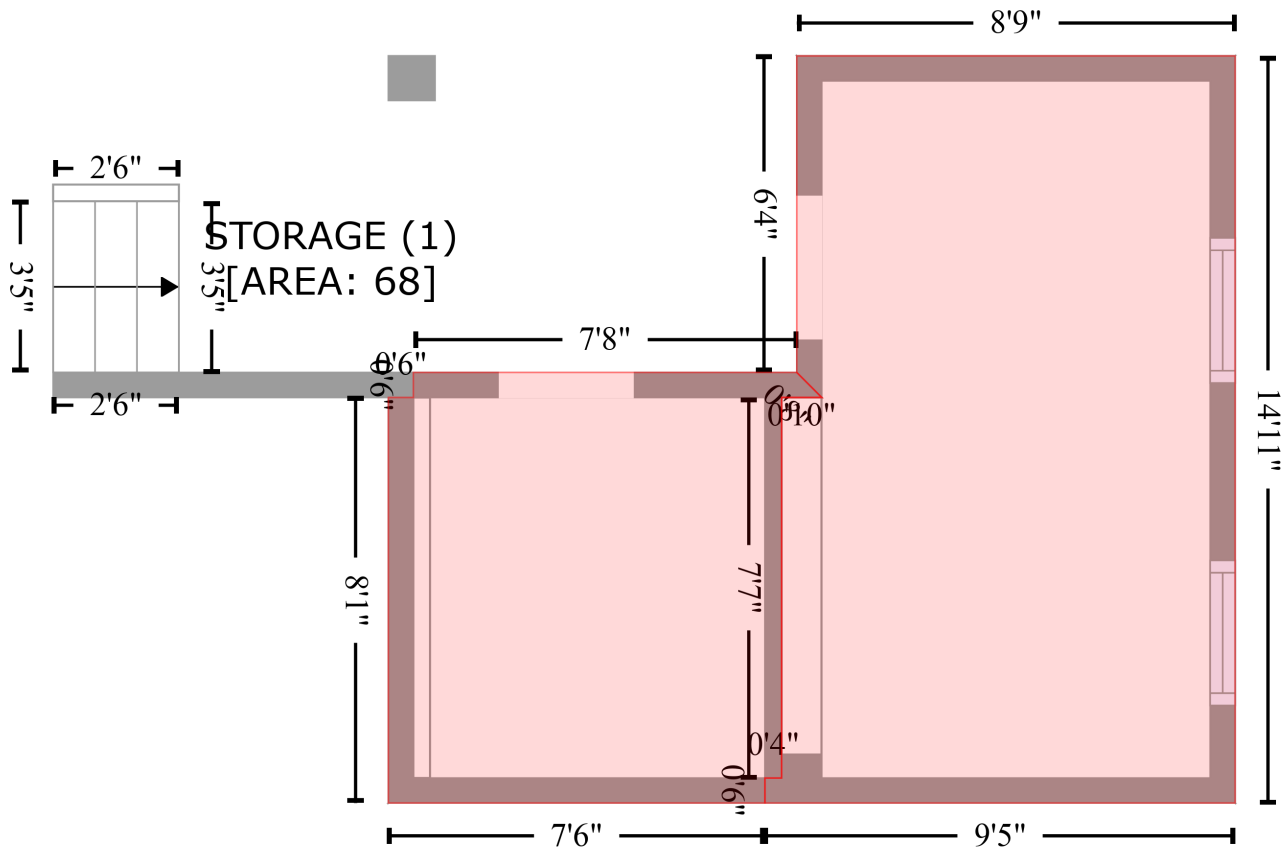
# 229 Wetherbee Lane, Sunset, South Carolina 29685, United States

Gross Living Area: 1103 sq. ft



Space	Area (sq. ft)	Calculation <small>Coordinate Polygon Area Algorithm using inches</small>
FLOOR 2 (Living area)	1103	$-\left((561.5 + 561.5) * (190 - 578.8) + (561.5 + 415.1) * (578.8 - 578.8) + (415.1 + 415.1) * (578.8 - 474.8) + (415.1 + -93.1) * (474.8 - 474.8) + (-93.1 + -93.1) * (474.8 - 408.7) + (-93.1 + -93.2) * (408.7 - 408.7) + (-93.2 + -93.2) * (408.7 - 329.4) + (-93.2 + -93.1) * (329.4 - 266) + (-93.1 + 470.8) * (266 - 266) + (470.8 + 470.8) * (266 - 190) + (470.8 + 561.5) * (190 - 190)\right) * 0.5 * 0.00694$
SCREENED PORCH (Non-living area)	182	$-\left((159.1 + 159.1) * (474.8 - 578.8) + (159.1 + -93.1) * (578.8 - 578.8) + (-93.1 + -93.1) * (578.8 - 474.8) + (-93.1 + 159.1) * (474.8 - 474.8)\right) * 0.5 * 0.00694$
PORCH (Non-living area)	178	$-\left((415.1 + 415.1) * (474.8 - 574.8) + (415.1 + 159.1) * (574.8 - 574.8) + (159.1 + 159.1) * (574.8 - 474.8) + (159.1 + 415.1) * (474.8 - 474.8)\right) * 0.5 * 0.00694$
FIREPLACE (Non-living area)	11	$-\left((-93.2 + -93.2) * (329.4 - 408.7) + (-93.2 + -112.4) * (408.7 - 408.7) + (-112.4 + -112.4) * (408.7 - 329.4) + (-112.4 + -93.2) * (329.4 - 329.4)\right) * 0.5 * 0.00694$

UTILITY (2)  
[AREA: 134]



Space	Area (sq. ft)	Calculation <small>Coordinate Polygon Area Algorithm using inches</small>
STORAGE (Non-living area)	68	$-\left((548.8 + 554.8) * (251.6 - 257.6) + (554.8 + 545.1) * (257.6 - 257.6) + (545.1 + 545.1) * (257.6 - 349) + (545.1 + 541.1) * (349 - 349) + (541.1 + 541.1) * (349 - 355) + (541.1 + 450.7) * (355 - 355) + (450.7 + 450.7) * (355 - 257.6) + (450.7 + 456.7) * (257.6 - 257.6) + (456.7 + 456.7) * (257.6 - 251.6) + (456.7 + 548.8) * (251.6 - 251.6)\right) * 0.5 * 0.00694$
UTILITY (Non-living area)	134	$-\left((654 + 654) * (175.6 - 355) + (654 + 541.1) * (355 - 355) + (541.1 + 541.1) * (355 - 349) + (541.1 + 545.1) * (349 - 349) + (545.1 + 545.1) * (349 - 257.6) + (545.1 + 554.8) * (257.6 - 257.6) + (554.8 + 548.8) * (257.6 - 251.6) + (548.8 + 548.8) * (251.6 - 175.6) + (548.8 + 654) * (175.6 - 175.6)\right) * 0.5 * 0.00694$